

UNITOR™ MIXING STATION INSTRUCTION MANUAL

Marine Products



UNITOR MIXING
STATION 4 - 14



UNITOR MIXING
STATION 4 - 4

Installation and Operation

1. Open the box.



2. First remove the selector knob by pulling straight off. Then remove the dispenser cover.

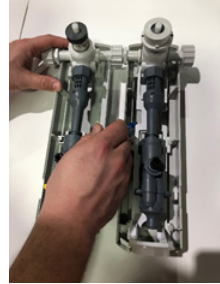


3. Both the units can be installed together or individually. In case you want to connect the units together, remove the cap from any one of the units as shown in the figure and then screw both units together.



Instruction Manual for Mixing Station

4. Use the cabinet back as a template to mark the correct spacing of the plug holes.



5. Slide key holes in cabinet back over screw heads, tighten screws, then install bottom screw. Fix the panel for 4-4 as shown in picture.



6. Install short, low flow discharge tube on 4-4 outlet.



Instruction Manual for Mixing Station

7. Select desired metering tips for product concentrate inlets.
Push each tip firmly into hose barb. Refer to tip selection guide below.
NOTE: A clear tip is provided and must be installed in any unused inlet barb for unit to function properly.



Metering tips for Unitor™ Mixing Stations

The final concentration of the dispensed solution is related to both, the size of the metering tip opening, and the viscosity of the liquid being siphoned. As dilution can vary with water temperature and pressure, the chart below should be viewed as a guideline.

For the 4 x 4 litre/minute unit

Product	Metering Tip
EasyClean Floor & Hard Surface (Product No - 778843)	Pink
EasyClean Window & Mirror (Product No- 778847)	Pink
EasyClean Basin and Toilet Bowl (Product No - 778851)	Pink
EasyClean Cleaning and Disinfection** (Product No - 778845)	Purple/Pink

For the 4 x 14 litre/minute unit

Product	Metering Tip
EasyClean Floor & Hard Surface (Product No - 778843)	Yellow
EasyClean Window & Mirror (Product No - 778847)	Yellow
EasyClean Basin and Toilet Bowl* (Product No - 778851)	Clear
EasyClean Cleaning and Disinfection** (Product No - 778845)	Brown/Yellow

*WSS does not recommend Basin and Toilet Bowl cleaner for 4 x 14 litre units so please use the CLEAR tip. A CLEAR tip must be installed in any unused inlet barb for unit to function properly.

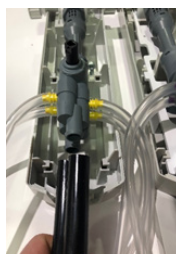
** Cleaning & Disinfection - For hospital, use Purple (4 x 4 litre unit) and Brown (4 x 14 litre unit) tips. For Galley & other areas use Pink (4 x 4 litre unit) and Yellow (4 x 14 litre unit) tips.

Instruction Manual for Mixing Station

8. Install chemical inlet tubing.



9. Install long high flow discharge tube.



10. Water supply connection—Screw the hose connector as shown in the figure. Reinstall the cover and the selector knob.



Instruction Manual for Mixing Station

11. Make a hole in the cap (9 mm drill) for each chemical suction tube. Slide the tubes through the holes. Install the ceramic weight and suction filter on the tubes, then fit the cap to the drum.

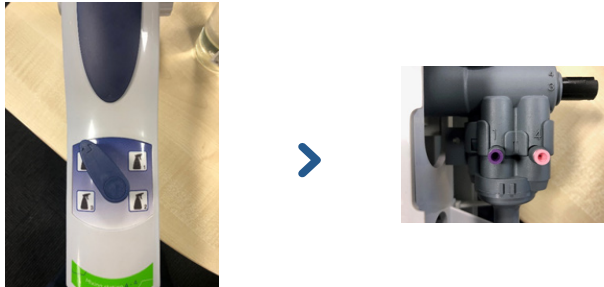


12. The unit is now ready. Turn on water supply. Purge air from system by briefly depressing the flow activating devices.



Instruction Manual for Mixing Station

13. You can select up to 4 different chemicals through the selector knob. To confirm which knob position corresponds to which chemical please check the numbering on the orifice (where chemical suction tubes are connected). For example, if the suction tube from Easyclean Cleaning & Disinfection is connected to orifice 1, then knob position 1 will give you Easyclean Cleaning & Disinfection and so on.

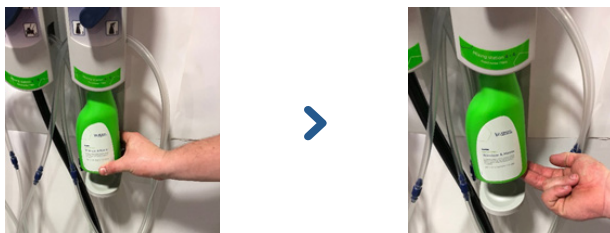


Tip: For ease of use you can also mark the knob positions with the chemical name so that you don't have to check the orifice numbering again.



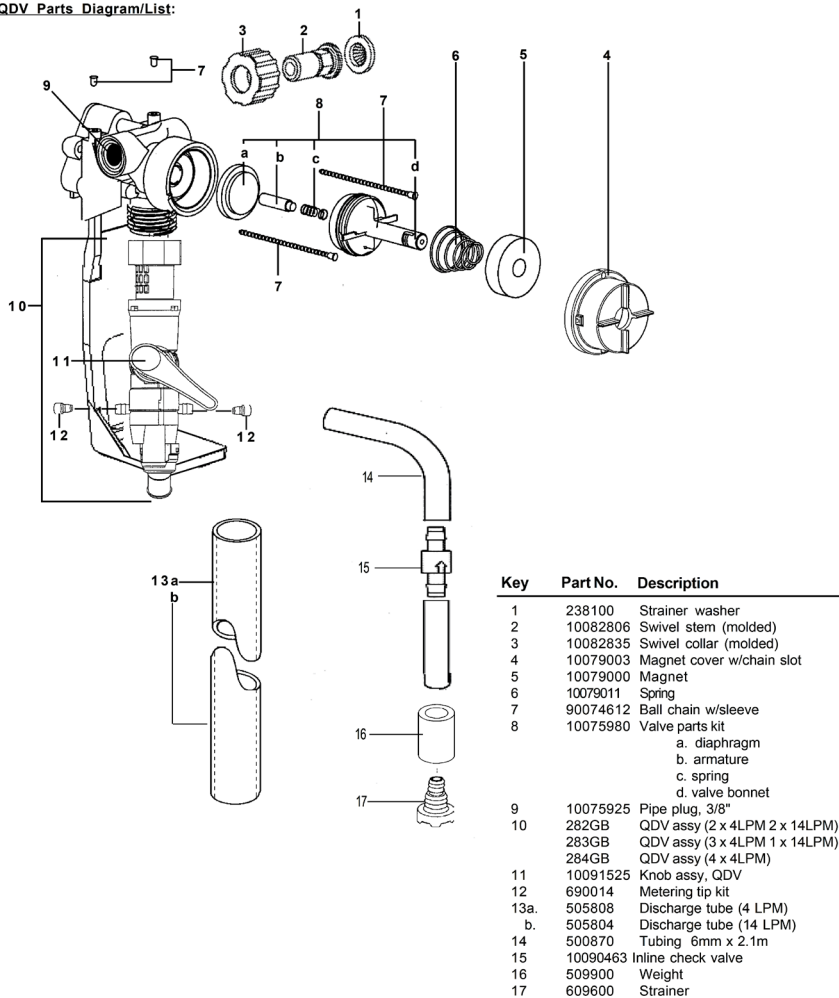
*For illustrative purposes only

14. For bottle activated units, insert a spray bottle over the short discharge tube and lift lever to start flow. To stop flow, lower bottle from dispenser.



Instruction Manual for Mixing Station

QDV Parts Diagram/List:



Instruction Manual for Mixing Station

Metering Tip Selection:

The final concentration of the dispensed solution is related to both, the size of the metering tip opening, and the viscosity of the liquid being siphoned. For water-thin products, the chart can be used as a guideline. Because distillation can vary with water temperature and pressure, and if the product is noticeably thicker than water, dilution rates shown should be viewed as approximates.

APPROXIMATE DILUTIONS AT 40 PSI FOR WATER-THIN PRODUCTS (1.0 CP)									
Tip Color	Orifice Size	Std. Drill Number	Ratio (per Eductor Flow)		Tip Color	Orifice Size	Std. Drill Number	Ratio (per Eductor Flow)	
			4.0 Litres per minute	14.0 Litres per minute				4.0 Litres per minute	14.0 Litres per minute
No Tip	.187	(3/16)	3:1	3.5:1	Green	.028	(70)	16:1	45:1
Grey	.128	(30)	3:1	4:1	Orange	.025	(72)	20:1	56:1
Black	.098	(40)	3:1	4:1	Brown	.023	(74)	24:1	64:1
Beige	.070	(50)	4:1	8:1	Yellow	.020	(76)	32:1	90:1
Red	.052	(55)	5:1	14:1	Aqua	.018	(77)	38:1	128:1
White	.043	(57)	7:1	20:1	Purple	.014	(79)	64:1	180:1
Blue	.040	(60)	8:1	24:1	Pink	.010	(87)	128:1	350:1
Tan	.035	(65)	10:1	30:1					

Troubleshooting Chart:

Problem	Cause	Solution
1. Unit doesn't dispense	a. No water b. Magnetic valve not functioning c. Excessive water pressure d. Eductor clogged e. Low flow mechanism failure f. Clogged water inlet strainer	a. Open water supply b. Install valve part kits c. Install regulator if flowing water pressure exceeds 4.3 Bar d. Clean (descale) or replace e. Install new parts f. Disconnect inlet water line and clean strainer
2. No concentrate draw	a. Clogged foot strainer b. Metering tip or eductor has scale build-up c. Low water pressure d. Discharge tube not in place (high flow only) e. Concentrate container empty f. Clogged water inlet strainer g. Selector out of position h. Check valve installed backwards i. Air leak in chemical pick-up tube j. Clear plastic tip installed in inlet hose barb	a. Clean or replace b. Clean (descale) or replace c. Minimum 1.78 Bar (with water running) required to operate unit properly d. Push tube firmly onto eductor discharge hose barb e. Replace with full container f. Disconnect inlet water line and clean strainer g. Assure selector is in position desired h. Confirm arrow on side of check valve is pointed toward eductor i. Put clamp on tube or replace tube if brittle j. Replace with colored metering tip
3. Excess concentrate draw	a. Metering tip not in place	a. Press correct tip firmly into barb on product inlet
4. Failure of unit to turn off	a. Water valve parts dirty or defective b. Magnet doesn't fully return c. Excessive water pressure d. Mechanism hangs up	a. Clean or replace with valve parts kit b. Make sure magnet moves freely. Replace spring if short or weak c. Install regulator if pressure (with water flowing) exceeds 4.3 Bar d. Be sure bracket is free to move and not broken
5. Excess foaming in discharge	a. Air leak in chemical pick-up tube b. Unused concentrate inlet barb not plugged	a. Put clamp on tube or replace tube if brittle b. Insert clear metering tip in unused concentrate inlet barb
6. Solution comes out of the wrong tube.	a. Incorrect tubes connected to inlet ports.	a. Review instructions on matching products with proper inlet stubs

Wilhelmsen Ships Service

Phone: (+47) 67 58 40 00

Fax: (+47) 67 58 40 80

Postal Address:
PO Box 33, NO-1324
Lysaker, Norway

wilhelmsen.com

Contact your local WSS customer services for prices and worldwide availability.