

INSTRUCTION MANUAL

MARINE DRINKING WATER COOLER

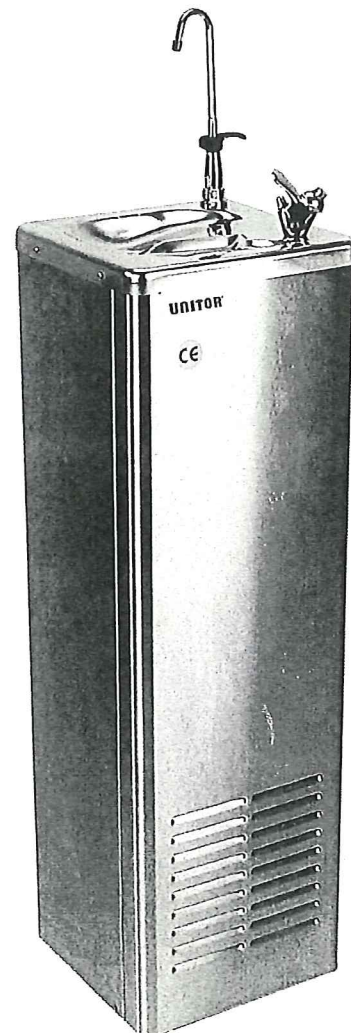
MODEL UNITOR INOX

- Product Number 607-708552 1ph. 220V 50/60Hz
- Product Number 607-711333 1ph. 110V 50/60Hz

- OZONE FRIENDLY REFRIGERANT 134a
- DUAL FREQUENCY TYPE 50 & 60Hz

I N D E X

1. Product Description, Features and Benefits
2. Installation
3. Pipe connection
4. Wire diagram
5. Start up
6. Safety
7. Maintenance



1. PRODUCT DESCRIPTION, FEATURES AND BENEFITS

Product Number and Electrical Data

| Product Number | Voltage | Normal Power Consumption | Max Op. Current | Required Fuse |
|----------------|-------------------|--------------------------|-----------------|---------------|
| 607-708552 | 1ph. 220V 50/60Hz | 360 W | 2.6 Amp | 10 Amp |
| 607-711333 | 1ph. 110V 50/60Hz | 360 W | 5.1 Amp | 16 Amp |

Dimensions and Weight

| | |
|------------|---------|
| Height | 1050 mm |
| Width | 310 mm |
| Depth | 310 mm |
| Net Weight | 22 kg |

Nominal Capacity

| Standard rating based on a continuous water flow for 1 hour operation at below stated temperatures | | | | | |
|----------------------------------------------------------------------------------------------------|----------------|-------------|--------------|------------------|------------|
| Type | Temperature °C | | | Cooling Capacity | |
| | Ambient | Inlet Water | Outlet Water | l/h (50Hz) | l/h (60Hz) |
| Drinking Water Cooler UNITOR INOX | 32,2 | 26,7 | 10 | 30 | 34 |

Water Pressure and Refrigerant

Maximum inlet water pressure 8,0 bar. Bubbler and bottle filler factory adjusted at 3,0 bar.
Ozone friendly refrigerant R-134a, unit charge 180 g. *720g*

Features and Benefits

- Cabinet in stainless steel AISI 304
- Supplied with high quality adjustable bubbler and bottle filler
- Dual frequency 50 or 60 Hz
- Ozone friendly refrigerant R-134a
- Designed for Tropical conditions
- Silent compressor operation
- Easy accessible inlet and outlet water connection on back of unit:
 - Inlet Water ½" Bsp male thread
 - Outlet Water (drain) 1" OD
- Unit fitted with a 1.5 m pre-connected electrical cable
- ISO 9001:2000 certified production
- CE approved and produced in accordance with EC hygienic norms, stainless steel AISI 304L storage tank equipped with a draining / cleaning plug.

2. INSTALLATION

Supplied loose in the packing are four adjustable threaded feet and the top part of the carafe filler. After the feet has been fitted to the base plate of the unit, they should be adjusted so that the sink top is properly aligned to secure efficient drain. The unit should be supported to the bulkhead by brackets or similar.

When the unit is placed in its desired location a minimum space of 100 mm should be provided between the back of the unit and the bulkhead to provide adequate cooling air circulation through the condenser. Be sure not to place the drinking water cooler close to any direct source of heat.

Flush mounting to the bulkhead is possible by placing the side panel of the unit against the bulkhead. This mounting eases the accessibility to the connections and the water tank drain plug. This also gives an option to fix the unit through the side panel.

Before electric power is connected check to make sure that the voltage available on board corresponds with the voltage specified on the unit nameplate located on the connection side of the unit.

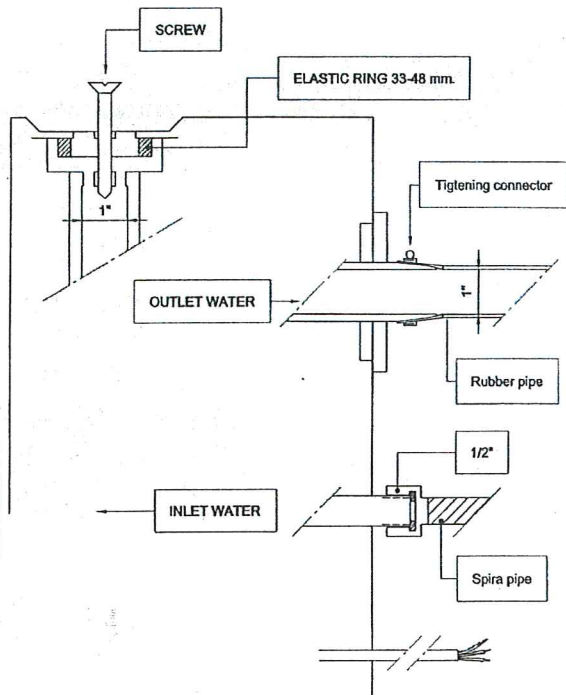
The cooler should be permanently connected to a switched fuse terminal fitted with the recommended fuse size, see technical data.

Connect the 1 inch drain outlet from the unit to an open type drain or gully, ensure that the first part of this drain line is arranged using a flexible hose and e.g. a hose clamp.

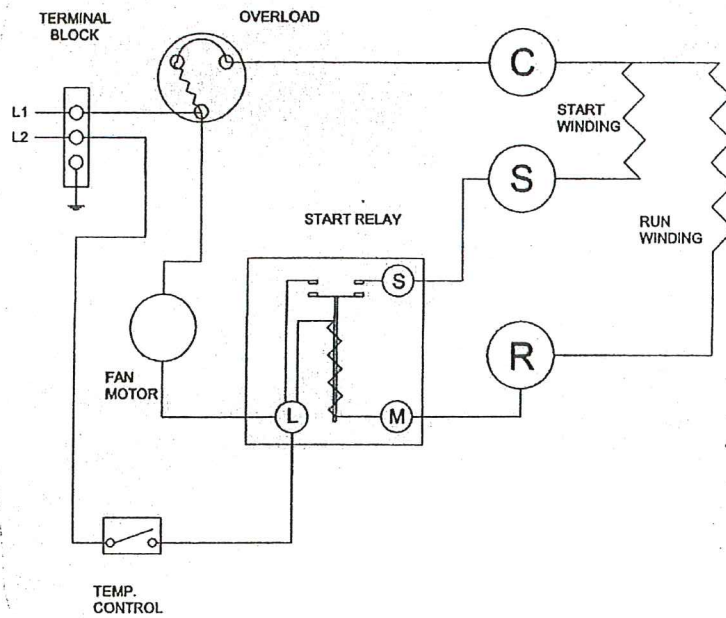
Connect the water to the cooler using a hose with a ½ inch Bsp female slip nut connection. Recommended water pressure 2-4 bar, maximum water pressure 8 bar. In some cases using a plastic hoses for this connection unpleasant smell can occur as some plastic is known to give smell to the water.

It is recommended to install a service valve together with a strainer in the water supply line to the unit, as this will ease future maintenance of the unit.

3. PIPE CONNECTIONS



4. WIRING DIAGRAM



5. START UP

After the water and drain connections are completed open the bubbler by depressing the button. This will release firstly air, then a mix of water and air and finally a steady stream of water. A tip to avoid spill is to hold an inverted glass over the bubbler during this exercise.

The bubbler is factory set, but if desired or necessary the water stream height can be adjusted. Use a screwdriver to adjust the screw located on the side base of the bubbler.

After power connection the drinking water cooler will operate for a period from 15 to 60 minutes before the water reaches the desired temperature.

The unit front panel can be removed by pushing the panel upwards and pulled out, this makes it possible to access the water temperature thermostat. The thermostat has been factory set but can be adjusted clockwise for colder or counter-clockwise for warmer drinking water if desired.

6. SAFETY

Be sure that the cooler is mounted in a place where it is protected against water splashes or rain.

The power to the unit must always be switched off and disconnected prior to repair or adjustments because of the danger of electrical shock hazard.

If any damages to the electrical connections or wires are spotted, the unit must be switched off and damaged parts renewed by a qualified service engineer.

Do not use this water cooler to wash dishes, glasses, fruits etc as this can result in a blockage of the drainpipe.

7. MAINTENANCE

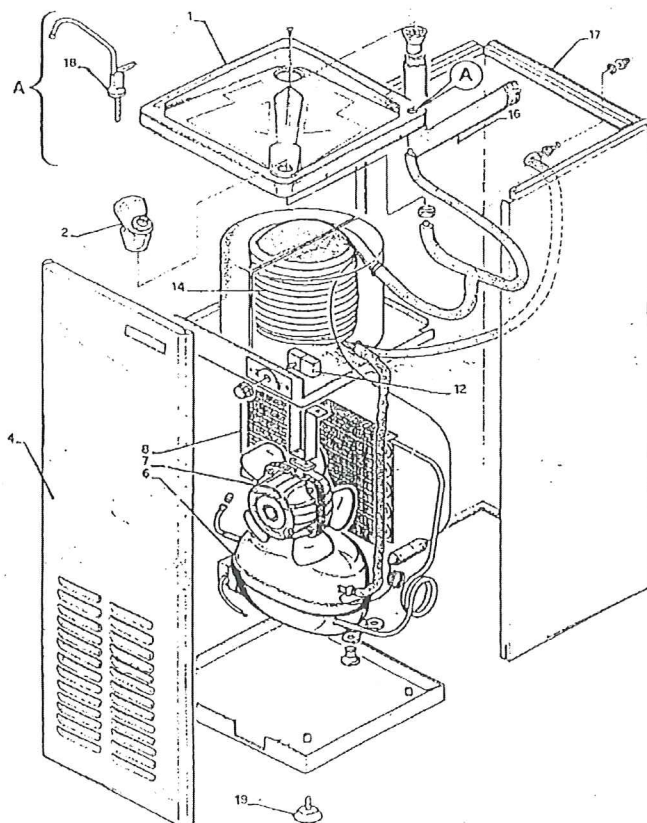
Vacuum clean the backside of the drinking water cooler to ensure proper air circulation over the compressor and condenser.

If the drinking water cooler will be out of operation for a longer period, close the water supply and disconnect the power to the unit. Drain the water tank by unscrewing the ½" cap nut placed on the unit backside.

If a strainer is installed on the water supply line, this should be inspected regularly.

The unit water tank should be drained and flushed at least annually to prevent deposits.

SPARE PARTS



| <u>Item No.</u> | <u>Product Number</u> | <u>Description</u> |
|-----------------|-----------------------|----------------------|
| 1 | 712158 | Top sink |
| 2 | 712166 | Bubbler |
| 4 | 712174 | Front panel |
| 6 (220V) | 712182 | Compressor |
| 6 (110V) | 712190 | Compressor |
| 7 (220V) | 712208 | Cooling fan |
| 7 (110V) | 712216 | Cooling fan |
| 8 | 712224 | Air cooled condenser |
| 12 | 712232 | Thermostat |
| 14 | 712240 | Water tank assembly |
| 16 | 712257 | Drain pipe |
| 17 | 712265 | Side assembly |
| 18 | 712273 | Carafe filler |
| 19 | 712281 | Mounting feet |

UNITOR®

Unitor ASA
 Drammensveien 211
 PO Box 300, Skøyen
 N-0213 Oslo
 Tlf: +47 22 13 14 15
 Norway