

UWW 161 TP

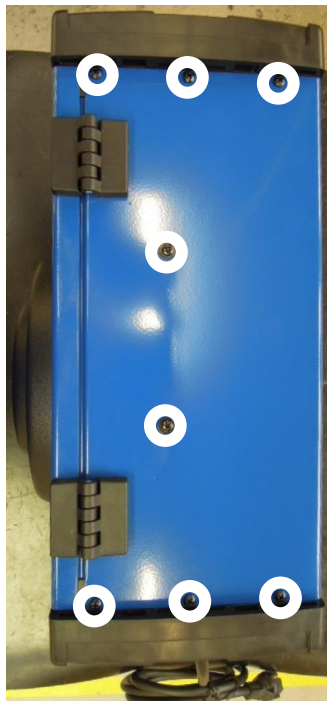


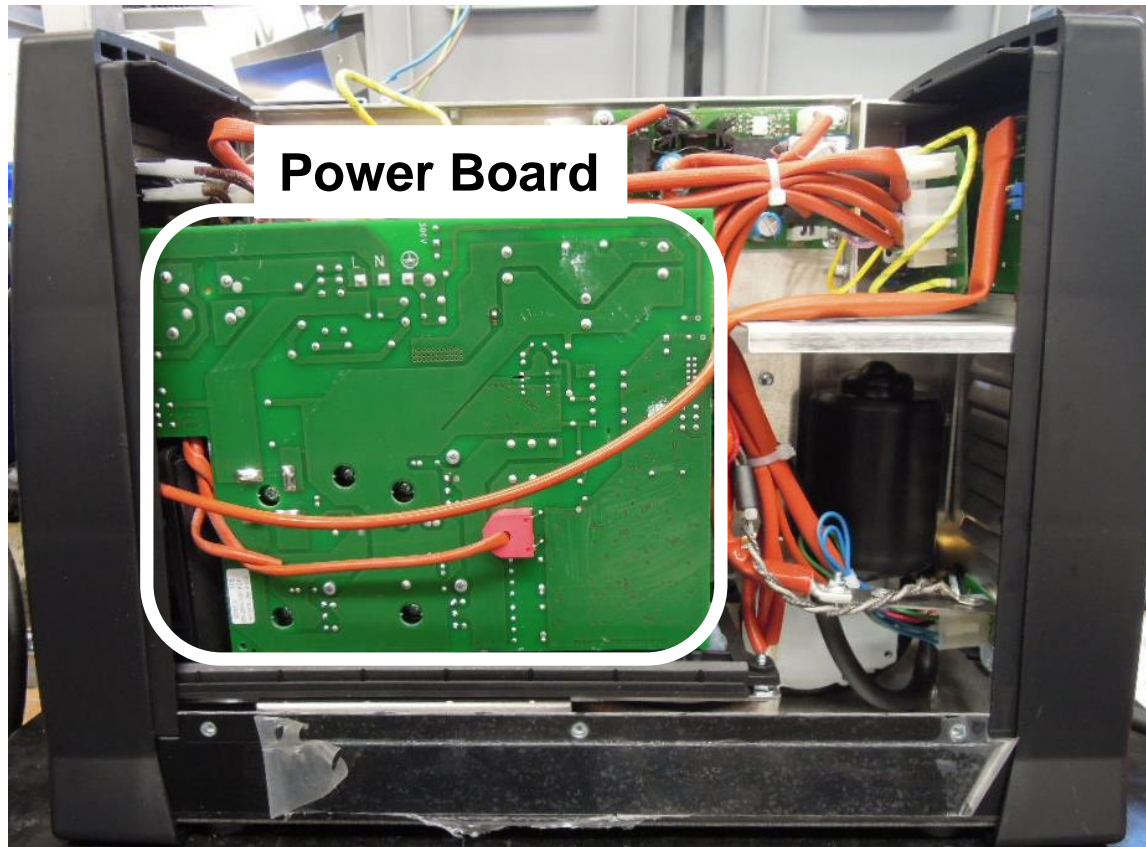


- **Make sure that the machine is disconnected from the main line before removing the cover.**

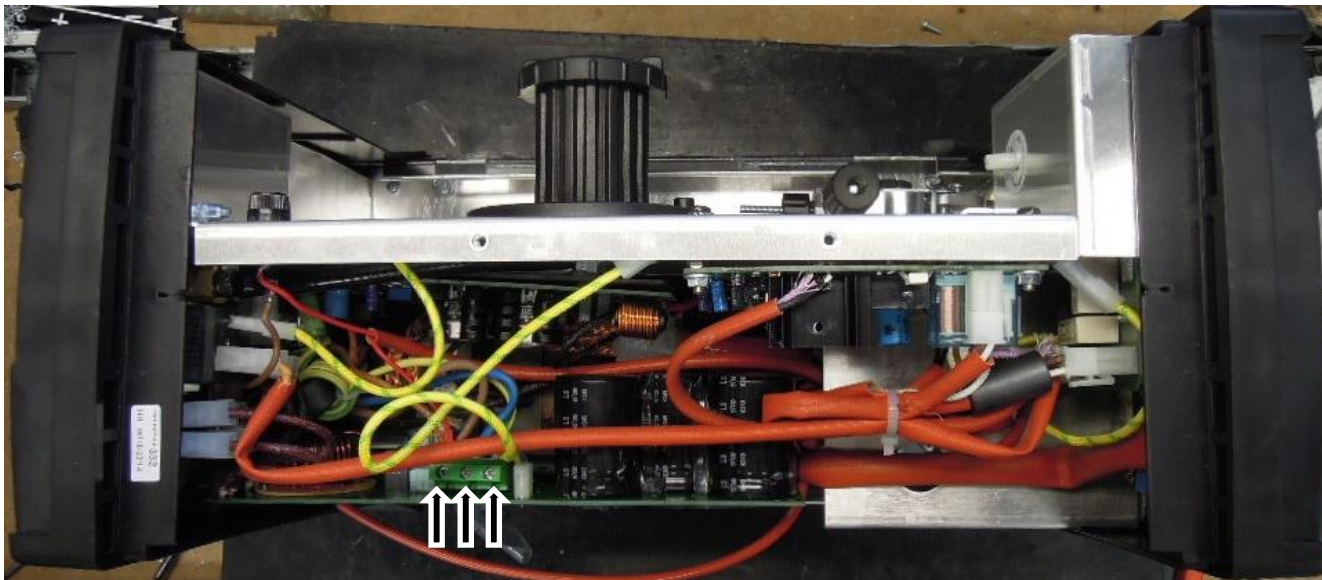


- **Step 1: Remove the cover (11 Philips screws).**



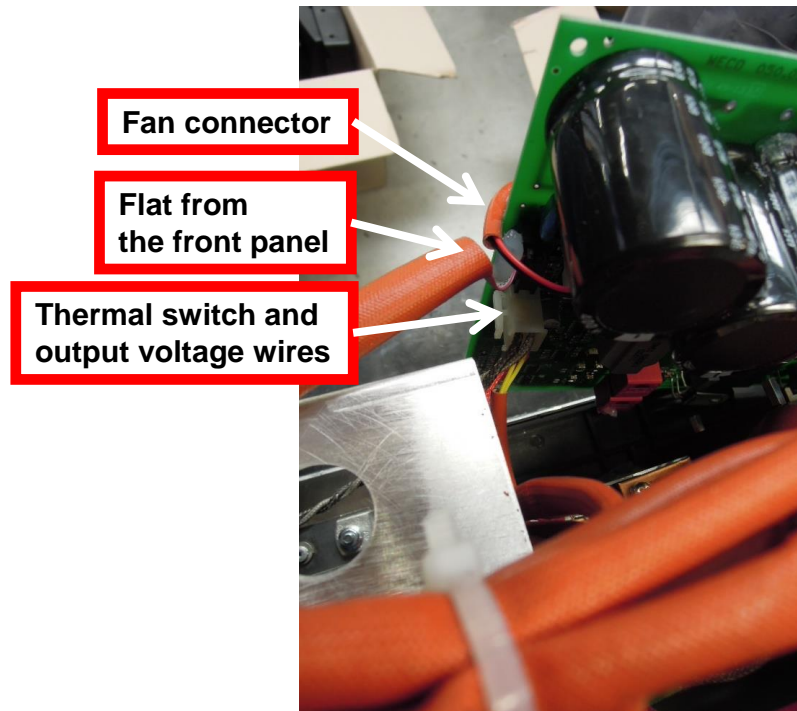


- **Step 2: Disconnect the wires from the terminal block.**



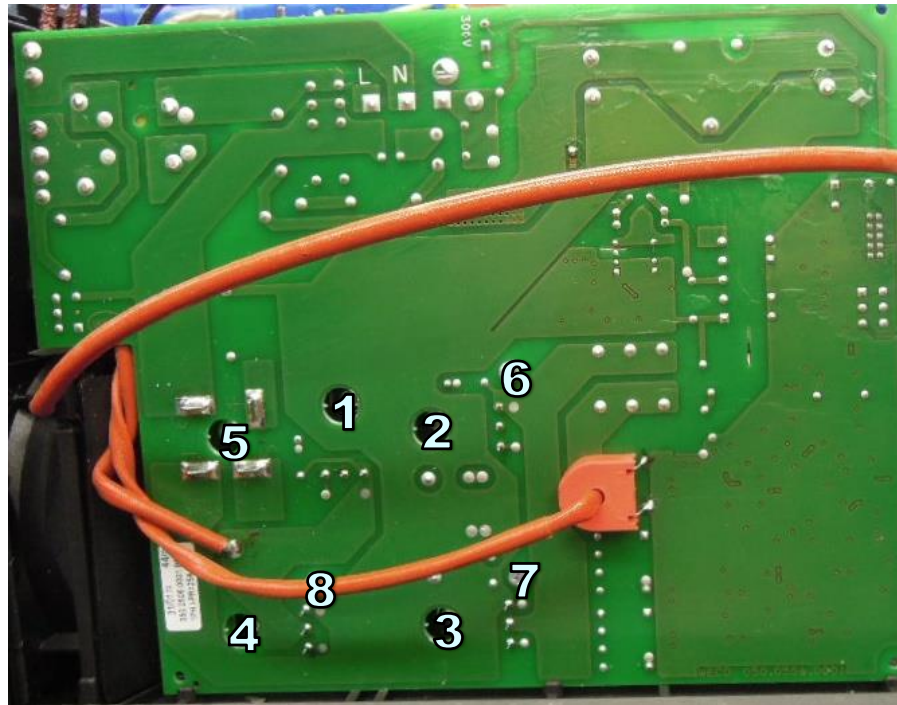


- **Step 3: Remove the connectors from the Power Board.**



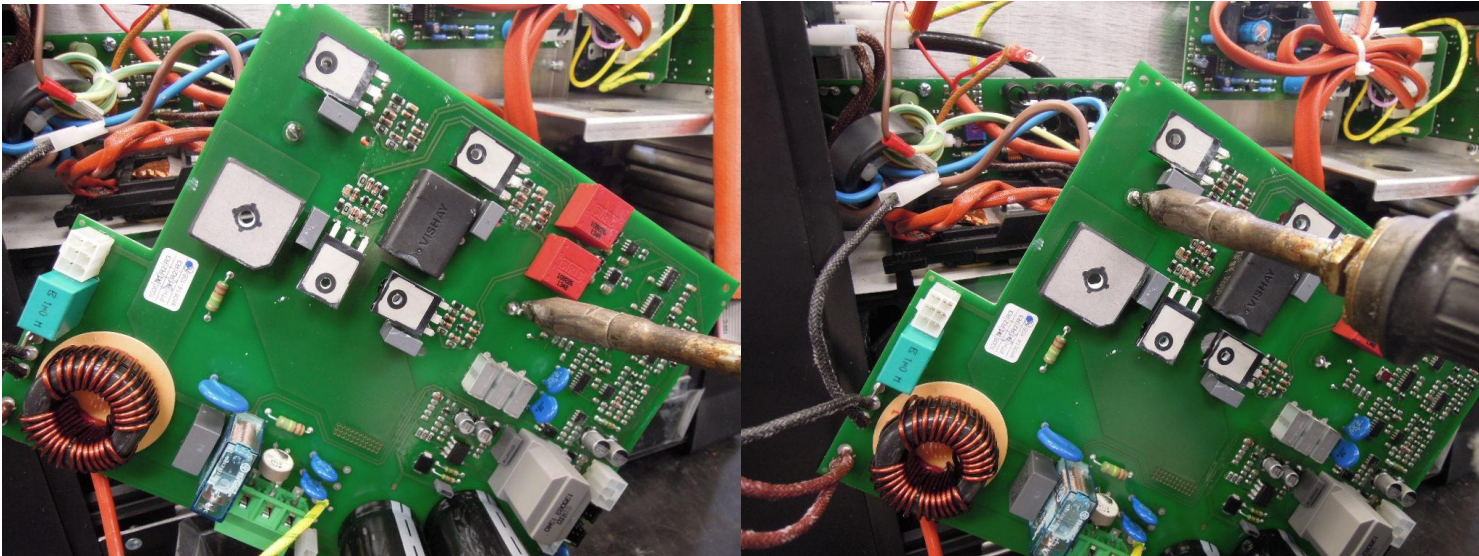


- **Step 4: Remove the screws from the Power Board in the sequence indicated.**

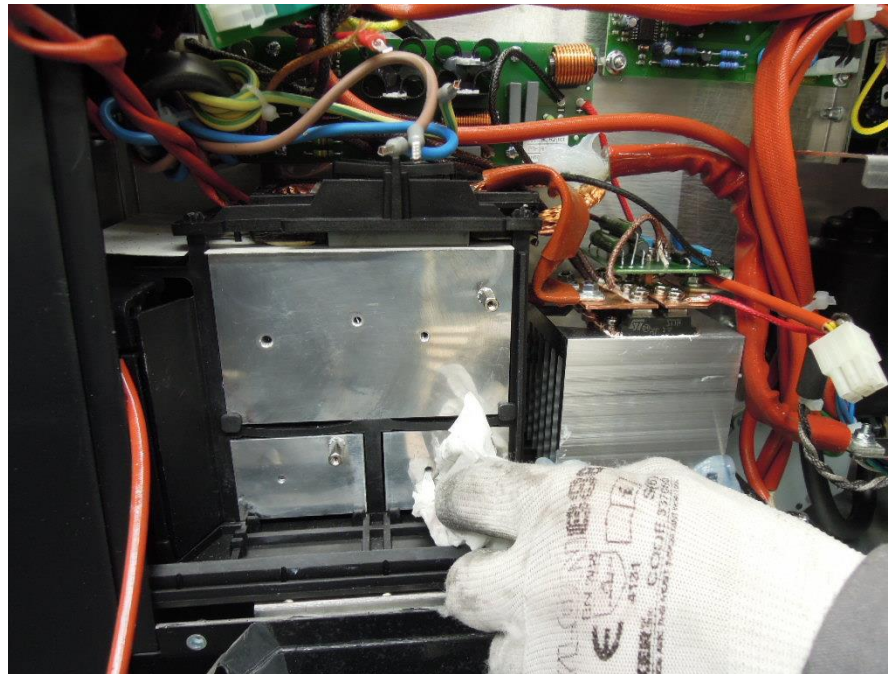




- **Step 5: Remove the primary wires of the power transformer.**



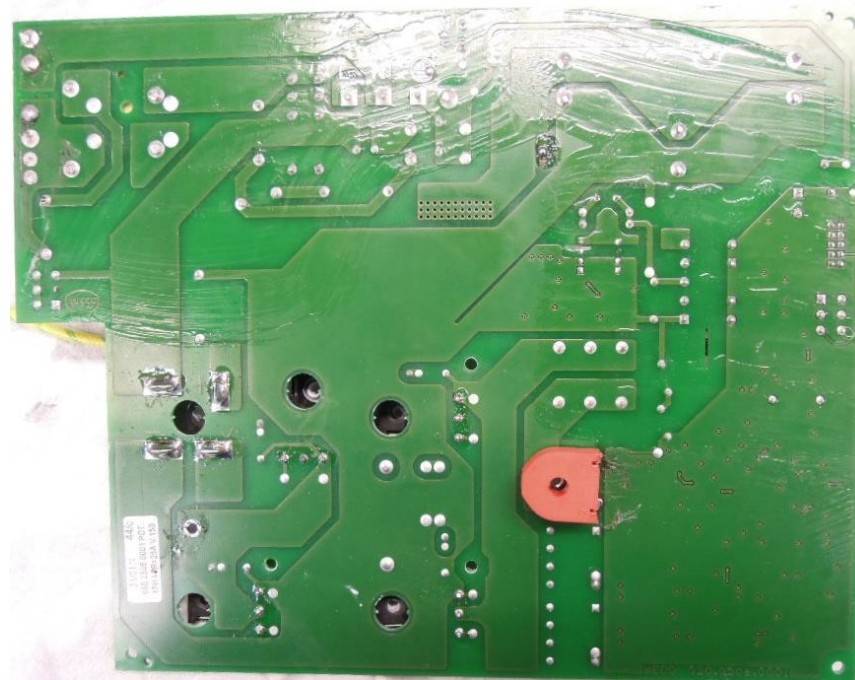
- **Step 6: Clean the heatsink with alcohol.**



- **After this you are ready for putting in the new Power Board.**

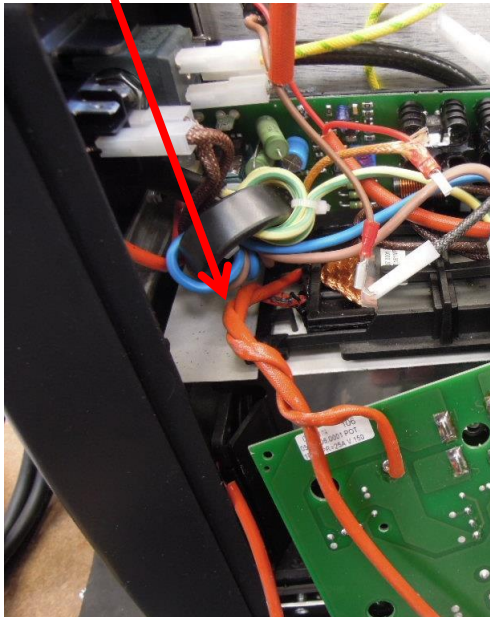


- **Step 7: Take a new power board.**

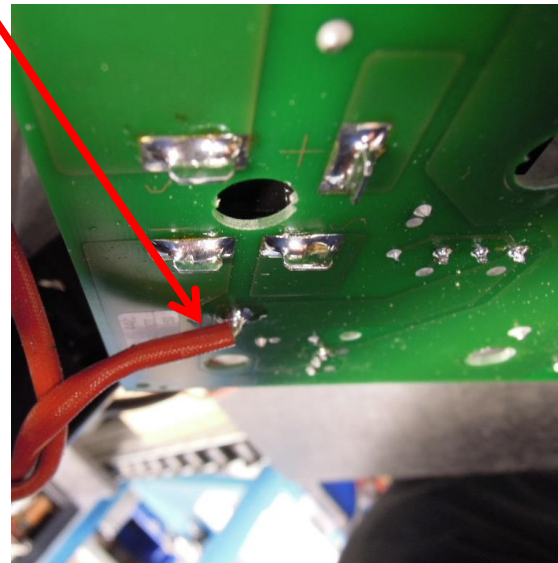


- **Step 8.1: Fix the primary wires of the power transformer.**

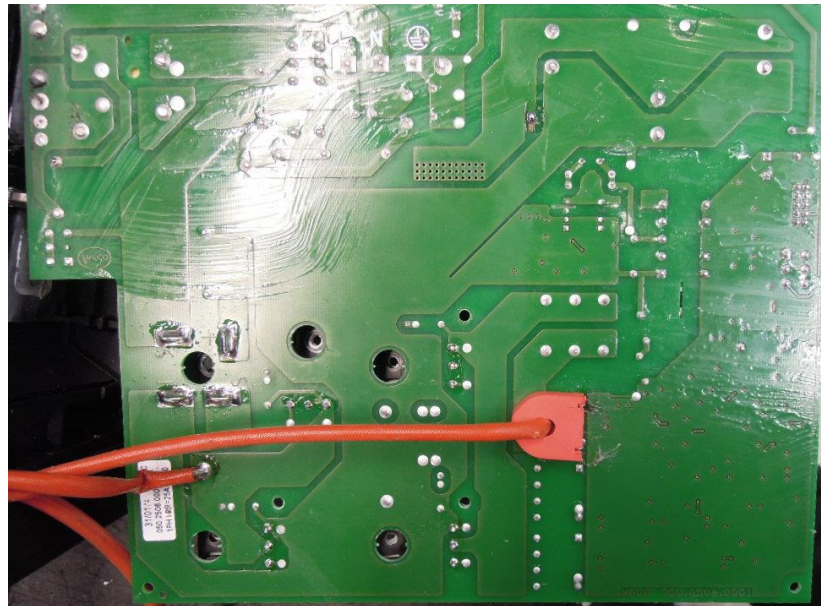
Twist the wires



Keep up the wire (it must not be close the power board)

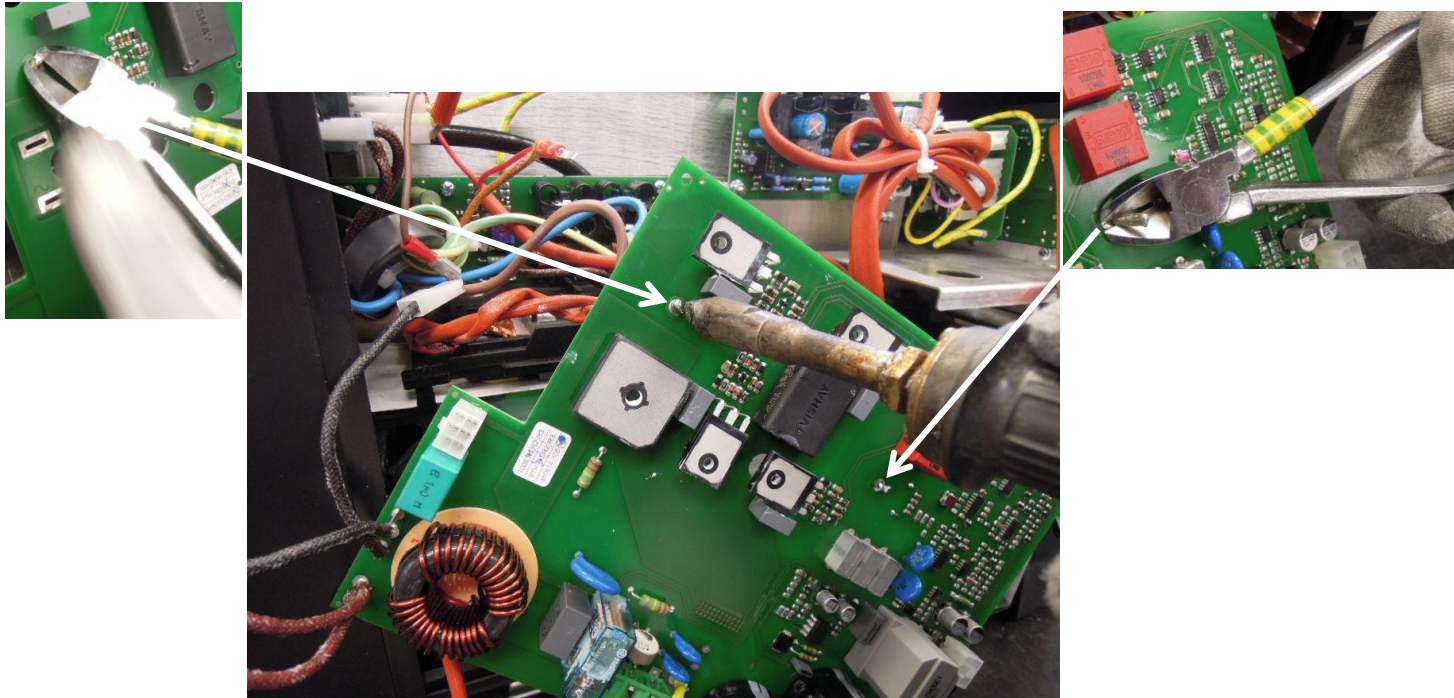


- **Step 8.2: Fix the primary wires of the power transformer.**

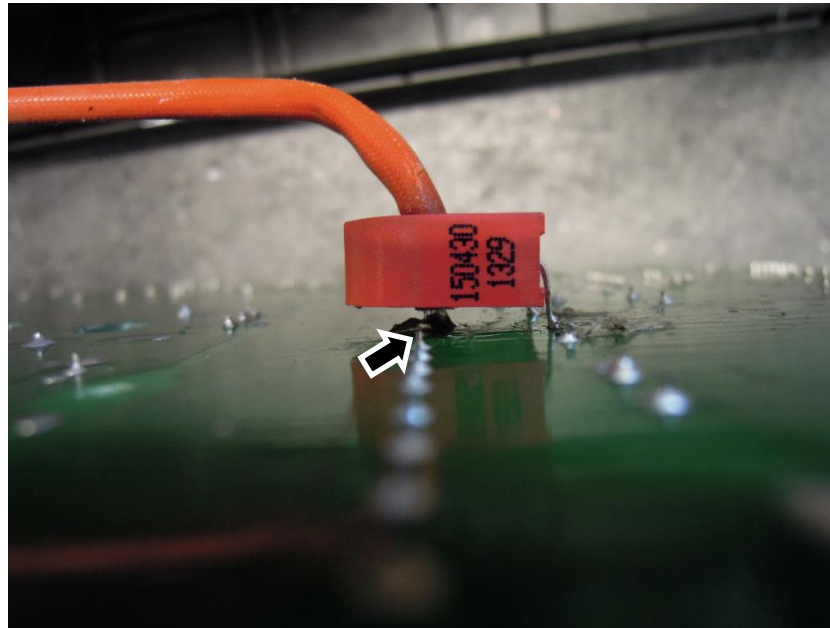




- **Step 8.3: Fix the primary wires of the power transformer and cut the wire in excess.**

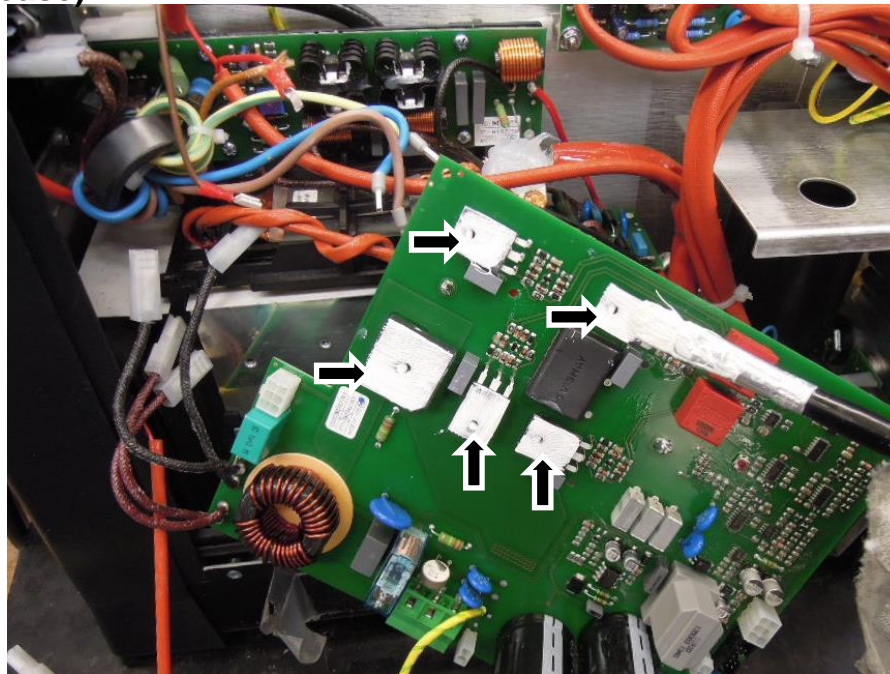


- **Step 8.4: The solder must enter in the hole and goes out to the other side.**



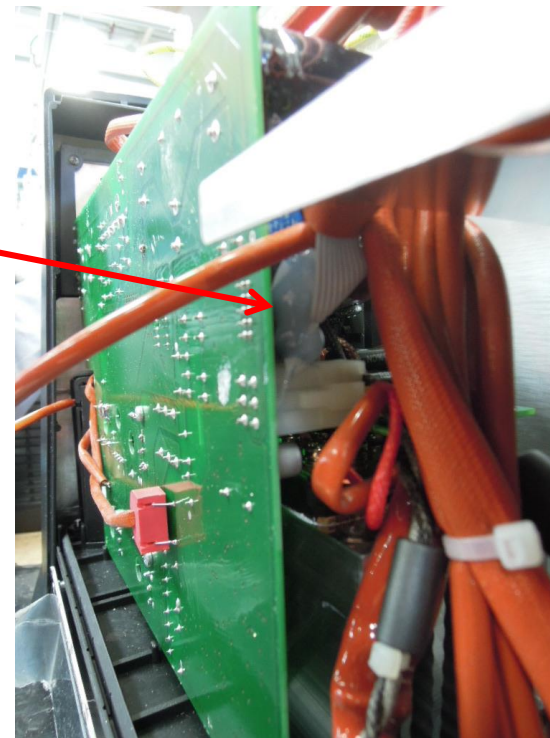


- **Step 9: Put the thermal grease** (the grease must be fluid neat like a cream and a thiny film; we suggest to use a sponge roller for painting or a paintbrush; it possible to add a very little quantity of diesel fuel to soften up the grease).



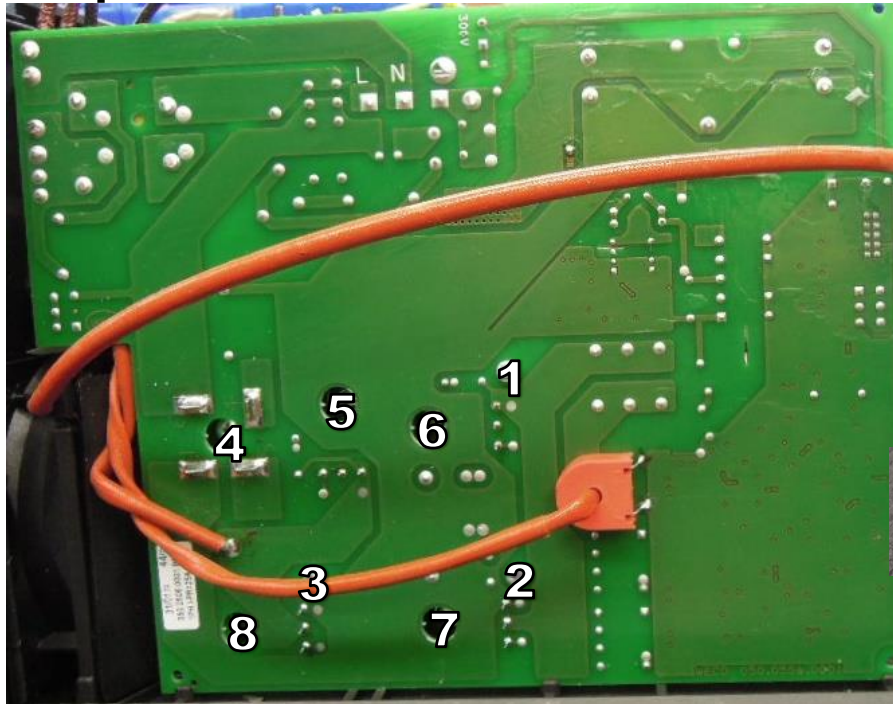
- **Step 10: With the Power Board in this position, connect the the connectors in the correct position.**

**Block the Flat of front panel
with silicone or hot glue**



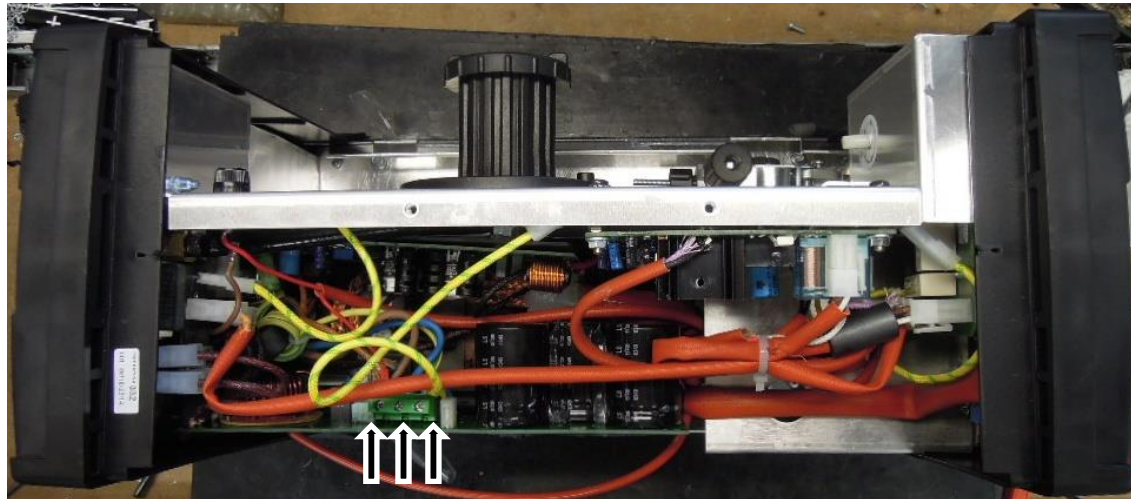


- **Step 11: Fix the Power Board to the heatsink in the sequence indicated.**



4 5 6 7 8 1 2 3

- **Step 12: Connect the wires to the terminal block.**





- **Step 13: Test the machine!**
Weld an electrode with 70 A and 110 A current.





Attention

Please use these Unitor products exclusively for the purpose indicated by WSS and only if the operator fully understands current practices and procedures. If any further information or assistance is required please contact your local WSS specialist.

www.wilhelmsen.com

