

Instruction manual

& spare parts list



AG-PRO 7



AG-PRO 5



AG-PRO 4

AG-PRO SERIES

AIR DRIVEN

ANGLE GRINDERS

1. General Safety and Operation Instruction

1. Unpacking

When unpacking this product, carefully inspect for any damage that may have occurred during transit. Make sure any loose fittings, bolts, etc, are tightened before putting this product into service.

2. This product is a part of a high pressure system and the following safety precautions must be followed at all times along with any other existing safety rules.
3. Read all manuals included with this product carefully. Be thoroughly familiar with the controls and the proper use of the equipment.
4. Only persons well acquainted with these rules of safe operation should be allowed to use the air tool.

Do not exceed maximum operation pressure of the air tool (6.2BAR/90 PSI).

The air tool could explode and result in death or serious personal injury.

5. Do not exceed any pressure rating of any component in the system.
6. Disconnect the air tool from air supply before changing tools or attachments, servicing and during non-operation.
7. Always wear safety glasses during operation.
8. Do not wear loose fitting clothing, scarves, or neck ties. Loose clothing may become caught in moving parts and result serious personal injury.
9. Do not wear jewelry when operation any tool. Jewelry may become caught in moving parts and result in serious personal injury.
10. Do not depress trigger when connecting the air supply hose.
11. Always use attachments designed for use with air powered tools.
Do not use damaged or worn attachments.
12. Never trigger the tool when not applied to a work object. Attachments must be securely attached. Loose attachments can cause serious injury.
13. Protect air lines from damage or puncture.
14. Never point an air tool at oneself or any other person. Serious injury could occur.
15. Check air hoses for weak or worn condition before each use. Make sure all connections are secured.

Release all pressure from the system before attempting to install, service, relocate or performs any maintenance.

16. Keep all nuts, bolts and screws tight and ensure equipment is in safe working condition.

17. Do not put hands near or under moving parts.

18. Air Hose

It is not recommended to install a quick coupler between the hammer and leader (whip) hose. Using fittings or air hoses which are too small can create a pressure drop and reduce the power of the tool. For most of the hammers, using 9.525 mm (3/8") I.D. fittings with 6.35 mm (1/4") NPT threads are recommended. For the others hammer, using 12.7 mm (1/2") I.D. with 9.525 mm(3/8") NPT threads are recommended. Most compressors are shipped with a short, 6.35 mm (1/4") I.D. hose. For proper performance and more convenience, use a 9.525 mm (3/8") I.D. hose. Hoses longer than 15.24 m (50 feet) should have a 12.7 mm (1/2") I.D.

Never carry a tool by the hose or pull the hose to move the tool or a compressor. Keep hoses away from heat, oil and sharp edges. Replace any hose that is damaged, weak or worn.

19. Storage

The scaling hammer must be lubricated before storing. Follow the air cylinder lubrication instructions with an exception to step 4. Only run the scaling hammer for 2 to 3 seconds instead of 20 to 30 seconds because more oil needs to remain in the scaling hammer when storing.

2. Particular Safety Instruction

1. Information of Noise Level

(1)The noise level at the operator's position is about:

| Model No.: | A-weighted sound pressure level (L _{pf}) | A-weighted sound power level (L _w) | Uncertainty K _{WA} |
|------------|--|--|-----------------------------|
| AG-PRO 4B | 99.4(dB) | 109.5(dB) | 3(dB) |
| AG-PRO 5 | 86.6(dB) | 96.7(dB) | 3(dB) |
| AG-PRO 7 | 91.2(dB) | 101.4(dB) | 3(dB) |

(2)Reference standard :ISO 15744.

(3)Always wear ear protectors during operation.

2. Information of Vibration Level

(1) The vibration level at the handle is about :

| Model No.: | Vibration Level (m/s ²) | Uncertainty K (m/s ²) |
|------------|--|--------------------------------------|
| AG-PRO 4B | 2.6 | 0.21 |
| AG-PRO 5 | 2.6 | 0.22 |
| AG-PRO 7 | 3.7 | 0.32 |

(2) Reference standard: EN 28927-1.

3. Safety Information

Rated rotational speed of the spindle

| Model No.: | AG-PRO 4B | AG-PRO 5 | AG-PRO 7 |
|------------|-----------|-----------|----------|
| Free speed | 13600 rpm | 10900 rpm | 7600 |

4. Safety Information

a. General

- (1) The Grinder shall be stored in a safe way.
- (2) After the control device has been released, it is recommended that the grinder shall be laid down in a suitable position.
- (3) Only lubricants recommended by the manufacturer shall be used.
- (4) Rest after continuous operation.

b. Potential injuries

Warning against the following hazards:


- (1) Cutting and severing.
- (2) Drawing in or trapping of long hair, loose clothing.
- (3) Eye injuries.
- (4) A whipping compressed air hose.

c. Grinding wheel

- (1) Check that maximum operation speed of the abrasive product converted to r/min. is equal to or greater than the rated speed of the spindle.
- (2) Ensure that the wheel dimensions are compatible with the grinder and that the wheel fits the spindle.
- (3) Ensure that the rated type and size of the wheel exactly matches the thread type and size of the spindle.
- (4) Grinding wheels shall be stored and handled with care in accordance with manufacturer's instructions.
- (5) Inspect the grinding wheel before use, warn against the use of chipped, cracked or otherwise defective products.
- (6) The blotters are used when they are provided with the bonded abrasive product.
- (7) Ensure that the abrasive product is correctly mounted and tightened before use and run the tool at no-load for 30 seconds in a safe position, stop immediately if there is considerable vibration or if other defects are detected.

If this condition occurs, check the grinder to determine the cause.

6. Explanations Of Warning Signs Used For This Tool

| | | | |
|---|---|---|--|
|  |  |  |  |
| The operator's instruction must be read before work starts | Hearing protection must be worn | Eye protection must be used or safety glasses worn | oil |

7. Application

Power tool driving a rotating spindle on which a bonded abrasive product is mounted.

8. The weight of this tools

| Model No.: | AG-PRO 4B | AG-PRO 5 | AG-PRO 7 |
|------------|-----------|----------|----------|
| Weight | 1.3 kg | 1.4 kg | 3.32 kg |

Note : If the weight of this tool exceeds 15Kgs, the following attention shall be paid to :

- (1) Be sure that you can afford the weight.
- (2) Be sure to wear foot protection, to prevent the risk of impact due to the drop of tool.

3. Maintenance Instruction

1. Lubrication

Proper lubrication is the owner's responsibility. Failure to lubricate the air too properly will dramatically shorten the life of the tool and will void the warranty.

This grinder requires lubrication before the initial use and before and after each additional use.

2. Grinder require lubrication throughout the life of the tool and must be lubricated in two separate areas : the air motor and the grinder mechanism. Follow the outlined procedures.

3. Air Motor Lubrication.

The motor must be lubricated daily. An air motor cannot be oiled too often.

4.

Disconnect the grinder from the air supply before lubricating.

- (1) Disconnect the grinder from the air supply.
- (2) Remove the slotted screw or Allen head screw from the oil porthole on the right side of the tool that has "OIL" stamped below the hole for.
- (3) Put three teaspoons of air tool oil in the oil porthole. Replace the screw.
- (4) Reconnect the air supply to the tools and run for 20 to 30 seconds.
Lubricate the entire tools by rotating upside down and sideways while running the tool.
- (5) Remove the screw and hold the oil porthole over a suitable container to allow excess oil to drain.
- (6) If the oil is dirty, repeat the procedure above until the oil comes out clear. Install the screw and tighten. The residual oil remaining in the grinding mechanism chamber is all that is needed for proper lubrication.

After an air tool has been lubricated, oil will discharge through the exhaust port during the first few seconds of operation. Thus, the exhaust port must be covered with a towel before applying air pressure. Failure to cover the exhaust port can result in serious injury.

4. Connect the grinder to the air supply and cover the exhaust port with a towel.
Run the die grinder and oil will discharge from the exhaust port when air pressure is applied.
5. Grinding mechanism lubrication
The grinder should be lubricated monthly.

Special care has to be taken when assembling the speed governor and any other protective device.

Inspecting spindles, threads and clamping devices regularly in respect of wear and tolerances for location of abrasive products.

Check the speed after each service and maintenance without the wheel on the spindle.

General Troubleshooting Guide

| Symptom | Possible Cause(s) | Corrective Action |
|--------------------------------------|--|--|
| Tool runs slowly or will not operate | <p>1: Grit or gum in tool</p> <p>2 No oil in tool.</p> <p>3 Low air pressure</p> <p>4 Air hose leaks</p> <p>5 Pressure drops</p> <p>6 Worn ball bearing in motor</p> | <p>1.Flush the tool with air tool oil, gum solvent, or an equal mixture of SAE # 10 motor oil and kerosene. Lubricate the tool after cleaning.</p> <p>2.Lubricate the tool according to the lubrication instructions in this manual.</p> <p>3.Adjust the compressor regulator to tool maximum while the tool is running free.</p> <p>4.Tighten and seal hose fittings if leaks are found.</p> <p>5-1.Be sure the hose is the proper size. Long hoses or tools using large volumes of air may require a hose with an I.D. of 9.5 mm (3/8") or larger depending on the total length of the hose.</p> <p>5-2.Do not use a multiple number of hoses connected together with quick connect fittings. This causes additional pressure drops and reduces the tool power Directly connect the hoses together.</p> <p>6.Remove and inspect bearing for rust, dirt and grit or worn race. Clean and regress bearing with bearing grease.</p> |
| Moisture blowing out of tool | <p>1.Water in tank.</p> <p>2.Water in the air lines/hoses.</p> | <p>1.Drain tank. (See air compressor manual). Oil tool and run until no water is evident. Oil tool again and run 1-2 seconds.</p> <p>2-1.Install a water separator/filter. Note: Separators only work properly when the air passing through the separator is cool Locate the separator / filter as far as possible from the compressor</p> <p>2-2.Install an air dryer.</p> |

UNITOR AG-PRO 4B

SPECIFICATIONS :

* GRINDING WHEEL ----- 4"
 * AIR PRESSURE ----- 90 PSI
 * AIR INLET ----- 1/4" PT(NPT)

* FREE SPEED ----- 13,600 RPM
 * HOSE SIZE ----- 3/8" ID

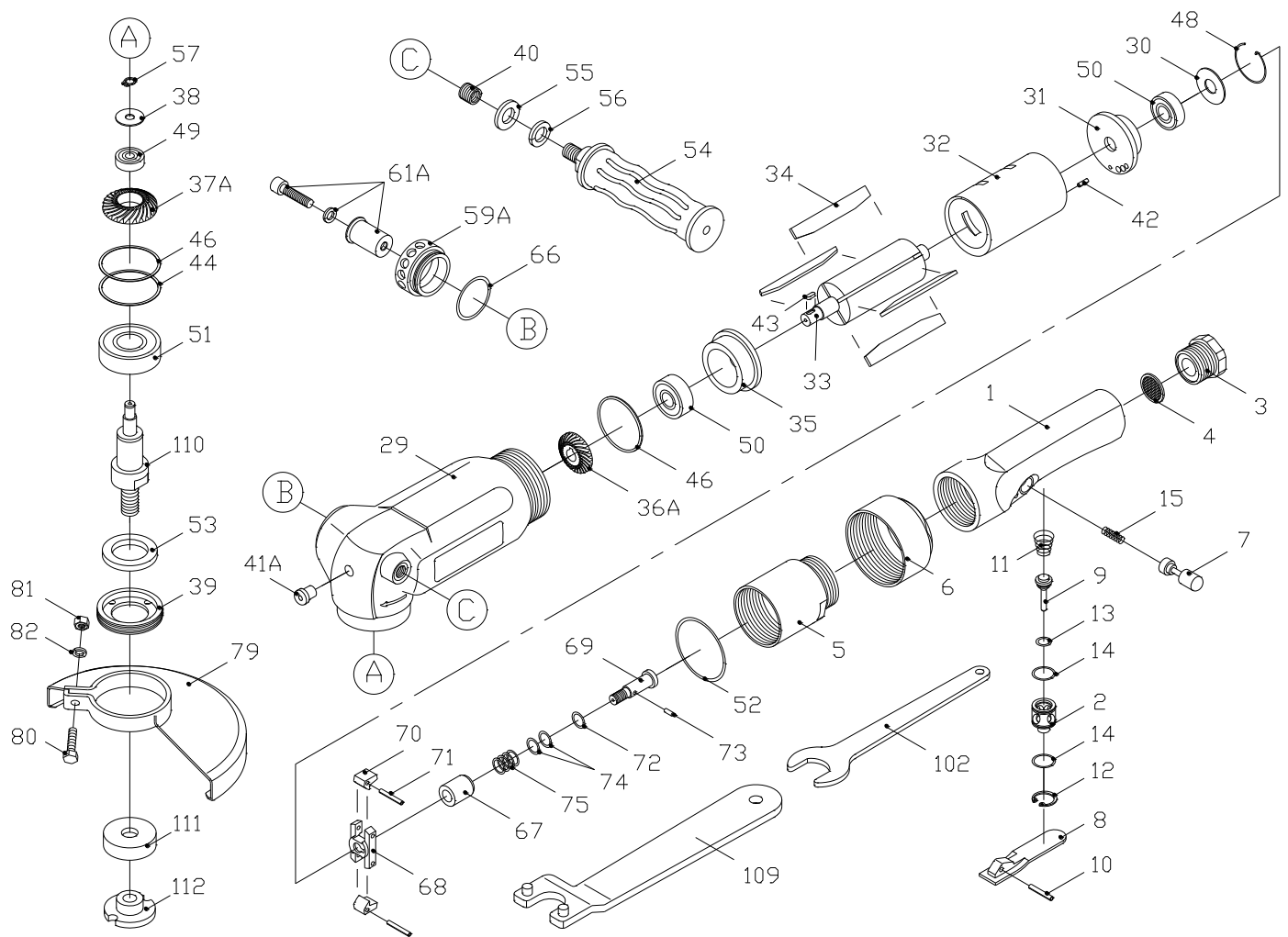
| REF NO. | PARTS NO. | DESCRIPTION | Q'TY | REF NO. | PARTS NO. | DESCRIPTION | Q'TY |
|---------|-----------|----------------------------|------|---------|-----------|---------------------------------|------|
| 1 | 752281 | HANDLE (LEVER TYPE) | 1 | 48 | 752313 | SNAP RING | 1 |
| 2 | 752282 | VALVE BUSHING ② | 1 | 49 | 752314 | BALL BEARING (606) ① ④ | 1 |
| 3 | 752283 | AIR INLET BUSHING ② | 1 | 50 | 752315 | BALL BEARING (629 Z) ① | 2 |
| 4 | 752284 | FILTER ② | 1 | 51 | 752316 | BALL BEARING (6202 Z) ① ④ | 1 |
| 5 | 752285 | VALVE BODY CONNECTOR | 1 | 52 | 752317 | O-RING (52) | 1 |
| 6 | 752286 | VALVE BODY NUT | 1 | 53 | 752318 | FLAT RING (d22xD32xW4) | 1 |
| 7 | 752287 | SAFETY PIN ② | 1 | 54 | 752319 | DEAD HANDLE | 1 |
| 8 | 752288 | VALVE LEVER ② | 1 | 55 | 752320 | FLAT WASHER (M8) | 1 |
| 9 | 752289 | VALVE ② | 1 | 56 | 752321 | SPRING WASHER (M8) | 1 |
| 10 | 752290 | SPRING PIN (Ø3.5x20L) ② | 1 | 57 | 752322 | OUSTER SNEP RING (S-6) ④ | 1 |
| 11 | 752291 | CONE SPRING (10x16x16) ① ② | 1 | 59A | 752323 | EXHAUST STACK | 1 |
| 12 | 752292 | INNER SNAP RING | 1 | 61A | 752324 | MUFFLER STEM ASSEMBLY | 1 |
| 13 | 752293 | O-RING (13) ① ② | 1 | 66 | 752325 | O-RING (66) | 1 |
| 14 | 752294 | O-RING (14) ① ② | 2 | 67 | 752326 | GOVERNOR VALVE ③ | 1 |
| 15 | 752295 | SPRING ① ② | 1 | 68 | 752327 | GOVERNOR CAGE ③ | 1 |
| 29 | 752296 | CARING | 1 | 69 | 752328 | GOVERNOR SPINDLE ③ | 1 |
| 30 | 752297 | REAR PLATE SPACER | 1 | 70 | 752329 | GOVERNOR WEIGHT ③ | 1 |
| 31 | 752298 | REAR PLATE | 1 | 71 | 752330 | SPRING PIN (Ø3x18L) ③ | 1 |
| 32 | 752299 | CYLINDER | 1 | 72 | 752331 | ADJUSTING SPACER (d8xD12xt) ③ | 1 |
| 33 | 752300 | ROTOR | 1 | 73 | 752332 | PIN (Ø2.5x5) ③ | 1 |
| 34 | 752301 | BLADE ① | 4 | 74 | 752333 | SPACER (d8.6xD12xW1.5) ③ | 1 |
| 35 | 752302 | FRONT PLATE | 1 | 75 | 752334 | 4" SERIES SPRING ③ | 1 |
| 36A | 752303 | DIRVING GEAR (36A) ④ | 1 | 79 | 752336 | WHEEL GUARD | 1 |
| 37A | 752304 | DIRVING GEAR (37A) ④ | 1 | 80 | HEX. BOLT | (not supplied as spare) | 1 |
| 38 | 752305 | CASING REAR COVER ④ | 1 | 81 | HEX. NUT | (not supplied as spare) | 1 |
| 39 | 752306 | CASING FRONT COVER | 1 | 82 | WASHER | (not supplied as spare) | 1 |
| 40 | 752307 | HELI SERT (M8) | 1 | 102 | 752344 | SPANNER 102 | 1 |
| 41A | 752308 | OILER | 1 | 109 | 756944 | SPANNER 109 | 1 |
| 42 | 752309 | SPRING PIN (Ø3x10L) | 1 | 110 | 756945 | 4" WHEEL SPINDLE (3/8"x24 UNF) | 1 |
| 43 | 752310 | KEY (3x8) | 1 | 111 | 756946 | WHEEL HOLDER FLANGE | 1 |
| 44 | 752311 | SPACER (d31xD35xW0.5) ④ | 1 | 112 | 756947 | WHEEL NUT FLANGE (3/8"x24UNF) ① | 1 |
| 46 | 752312 | ADJUSTING SPACER ④ | 2 | | | | |

402 756900

To get maximum performance and life of your tool, replace the whole set of parts included in the Spare part kits :

- ① Tune-up kit 722801
- ② Throttle valve overhaul kit 722819
- ③ Governor overhaul kit 722827
- ④ Bevel gear overhaul kit 722835

UNITOR AG-PRO 4B



UNITOR AG-PRO 5

SPECIFICATIONS :

* GRINDING WHEEL ----- 5"
 * AIR PRESSURE ----- 90 PSI
 * AIR INLET ----- 1/4" PT(NPT)

* FREE SPEED ----- 10,900 RPM
 * HOSE SIZE ----- 3/8" ID

| REF NO. | PARTS NO. | DESCRIPTION | Q'TY | REF NO. | PARTS NO. | DESCRIPTION | Q'TY |
|---------|------------|----------------------------|------|---------|-------------|--------------------------------|------|
| 1 | T7043A-01 | HANDLE (LEVER TYPE) | 1 | 48 | T7043A-48 | SNAP RING | 1 |
| 2 | T7043A-02 | VALVE BUSHING ② | 1 | 49 | T7043A-49 | BALL BEARING (606) ① ④ | 1 |
| 3 | T7043A-03 | AIR INLET BUSHING ② | 1 | 50 | T7043A-50 | BALL BEARING (629 Z) ① | 2 |
| 4 | T7043A-04 | FILTER ② | 1 | 51 | T7043A-51 | BALL BEARING (6202 Z) ① ④ | 1 |
| 5 | T7043A-05 | VALVE BODY CONNECTOR | 1 | 52 | T7043A-52 | "O" RING | 1 |
| 6 | T7043A-06 | VALVE BODY NUT | 1 | 53 | T7043A-53 | FLAT RING (d22xD32xW4) | 1 |
| 7 | T7043A-07 | SAFETY PIN ② | 1 | 54 | T7043A-54 | DEAD HANDLE | 1 |
| 8 | T7043A-08 | VALVE LEVER ② | 1 | 55 | T7043A-55 | FLAT WASHER (M8) | 1 |
| 9 | T7043A-09 | VALVE ② | 1 | 56 | T7043A-56 | SPRING WASHER (M8) | 1 |
| 10 | T7043A-10 | ROIL PIN (Ø3.5x20L) ② | 1 | 57 | T7043A-57 | OUSTER SNEP RING (S-6) ④ | 1 |
| 11 | T7043A-11 | CONE SPRING (10x16x16) ① ② | 1 | 59A | T7043A-59A | EXHAUST STACK | 1 |
| 12 | T7043A-12 | INNER SNAP RING ② | 1 | 61A | T7043A-61A | MUFFLER STEM ASSEMBLY | 1 |
| 13 | T7043A-13 | O-RING (13) ① ② | 1 | 66 | T7043A-66 | "O" RING (66) | 1 |
| 14 | T7043A-14 | O-RING (14) ① ② | 2 | 67 | T7043A-67 | GOVERNOR VALVE ③ | 1 |
| 15 | T7043A-15 | SPRING ① ② | 1 | 68 | T7043A-68 | GOVERNOR CAGE ③ | 1 |
| 29 | T7043A-29 | CARING | 1 | 69 | T7043A-69 | GOVERNOR SPINDLE ③ | 1 |
| 30 | T7043A-30 | REAR PLATE SPACER | 1 | 70 | T7043A-70 | GOVERNOR WEIGHT ③ | 1 |
| 31 | T7043A-31 | REAR PLATE | 1 | 71 | T7043A-71 | ROLL PIN (Ø3x18L) ③ | 1 |
| 32 | T7043A-32 | CYLINDER | 1 | 72 | T7043A-72 | ADJUSTING SPACER ③ | 1 |
| 33 | T7043A-33 | ROTOR | 1 | 73 | T7043A-73 | PIN (Ø2.5x5L) ③ | 1 |
| 34 | T7043A-34 | BLADE ① | 4 | 74 | T7043A-74 | SPACER (d8.6xD12xW1.5) ③ | 1 |
| 35 | T7043A-35 | FRONT PLATE | 1 | 76 | T7043A-76 | 5" SERIES SPRING ③ | 1 |
| 36A | T7043A-36A | DRIVING GEAR (15T) ④ | 1 | 91 | T7043A-91 | WHEEL GUARD | 1 |
| 37A | T7043A-37A | DRIVEN GEAR (18T) ④ | 1 | 92 | BOLT | (not supplied as spare) | 1 |
| 38 | T7043A-38 | CASING REAR COVER ④ | 1 | 93 | HEX. NUT | (not supplied as spare) | 1 |
| 39 | T7043A-39 | CASING FRONT COVER | 1 | 94 | WASHER | (not supplied as spare) | 1 |
| 40 | T7043A-40 | HELI SERT (M8) | 1 | 102 | T7043A-102 | SPANNER | 1 |
| 41A | T7043A-41A | OILER | 1 | 106 | T7043A-106 | WHEEL HOLDER FLANGE | 1 |
| 42 | T7043A-42 | ROLL PIN (Ø3x10L) | 1 | 107 | T7043A-107 | 5" WHEEL SPINDLE (5/8"-11 UNC) | 1 |
| 43 | T7043A-43 | KEY (3x8) | 1 | 108B | T7043A-108B | WHEEL NUT FL. (5/8"-11UNC) ① | 1 |
| 44 | T7043A-44 | SPACER (d31xD35xW0.5) ④ | 1 | 109 | T7043A-109 | SPANNER | 1 |
| 46 | T7043A-46 | SPACER (d31xD35xt) ④ | 2 | | | | |

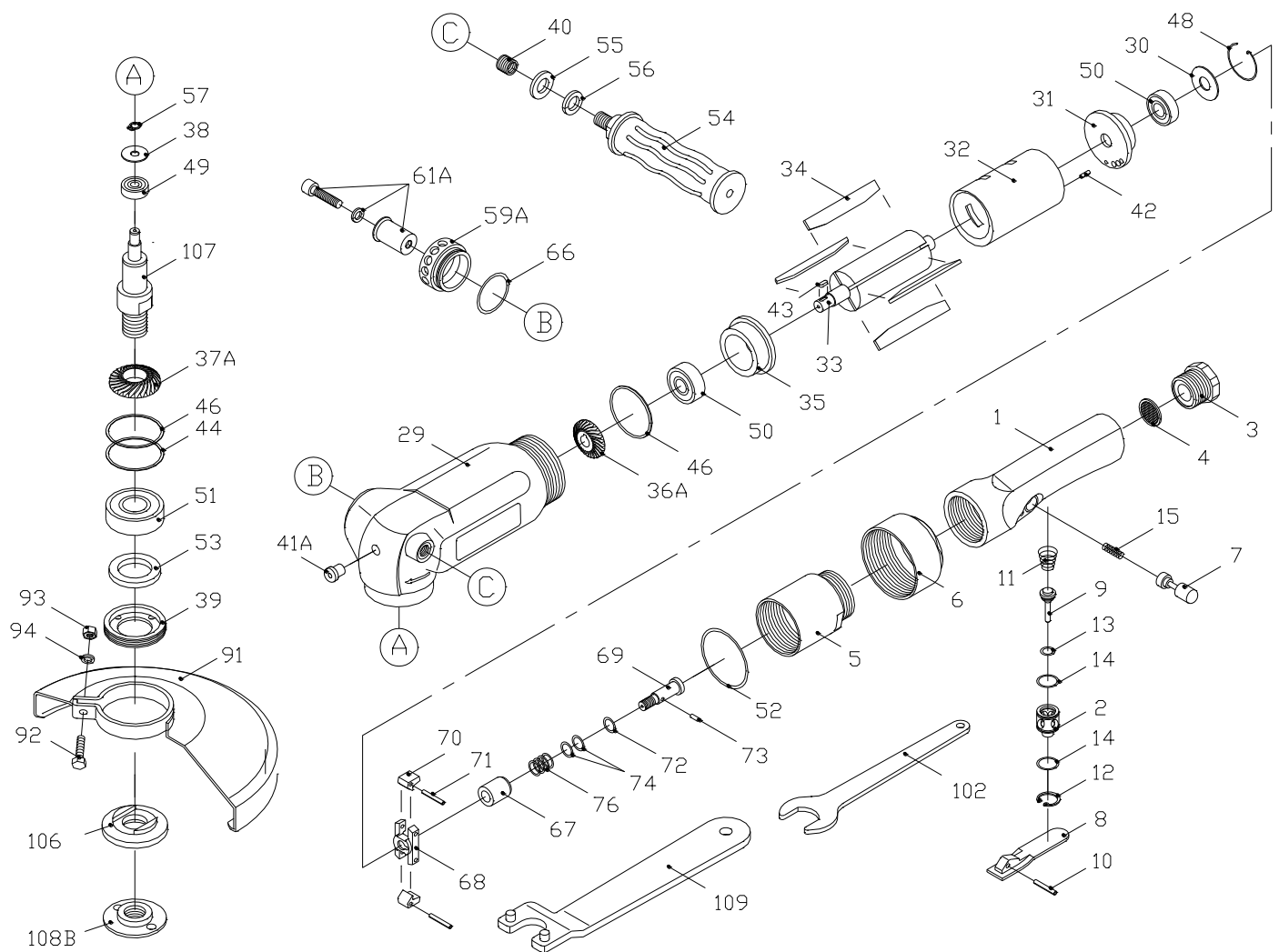
Optional Parts

402 721985

** To get maximum performance and life of your tool, replace the whole set of Parts Kit is highly recommended.

- | | | |
|---|-----------------------------|--------|
| ① | Tune-up kit | 728683 |
| ② | Throttle valve overhaul kit | 722819 |
| ③ | Governor overhaul kit | 728709 |
| ④ | Bevel gear overhaul kit | 722835 |

UNITOR AG-PRO 5



UNITOR AG-PRO 7

SPECIFICATIONS :

* GRINDING WHEEL ----- 7"

* AIR PRESSURE ----- 90 PSI

* AIR INLET ----- 3/8" PT(NPT)

* FREE SPEED ----- 7,600 RPM

* HOSE SIZE ----- 1/2" ID

| REF | PARTS NO. | DESCRIPTION | Q'TY | REF | PARTS NO. | DESCRIPTION | Q'TY |
|-----|-------------|--------------------------|------|-------|-------------|----------------------------|------|
| 15 | T7044BA-15 | HANDLE (LEVER TYPE) | 1 | 56A | T7044BA-56A | DRIVEN GEAR ④ | 1 |
| 16 | T7044BA-16 | AIR INLET BUSHING ② | 1 | 57 | T7044BA-57 | CASING FRONT COVER | 1 |
| 17 | T7044BA-17 | VALVE BUSHING ② | 1 | 58 | T7044BA-58 | DEAD HANDLE | 1 |
| 18 | T7044BA-18 | VALVE LEVER ② | 1 | 59 | T7044BA-59 | HEX. HEAD BOLD (M6x22L) | 1 |
| 19 | T7044BA-19 | VALVE BODY NUT | 1 | 60 | T7044BA-60 | HEX. HEAD NUT (M6) | 1 |
| 20 | T7044BA-20 | SAFETY PIN ② | 1 | 61A | T7044BA-61A | OILER | 1 |
| 21 | T7044BA-21 | FILTER ② | 1 | 62 | T7044BA-62 | SPRING WASHER (6MM) | 1 |
| 22 | T7044BA-22 | GOVERNOR VLAWE BUS. ③ | 1 | 63 | T7044BA-63 | SPRING WASHER (12MM) | 1 |
| 23 | T7044BA-23 | VALVE STEM ② | 1 | 64 | T7044BA-64 | SNAP RING | 1 |
| 24 | T7044BA-24 | SPRING PIN (Ø3.5x24L) ② | 1 | 65 | T7044BA-65 | SPRING PIN (Ø3x8L) | 1 |
| 25 | T7044BA-25 | "O" RING ①② | 1 | 66 | T7044BA-66 | KEY | 1 |
| 26 | T7044BA-26 | SPRING ①② | 1 | 67 | T7044BA-67 | KEY ④ | 1 |
| 27 | T7044BA-27 | CONE SPRING ①② | 1 | 68 | T7044BA-68 | SPACER (47x43x1) ④ | 1 |
| 28 | T7044BA-28 | INNER SNAP RING (18) ② | 1 | 70 | T7044BA-70 | ADJUSTING SPACER ④ | 2 |
| 29 | T7044BA-29 | "O" RING ①② | 2 | 71 | T7044BA-71 | ADJUSTING SPACER ④ | 2 |
| 30 | T7044BA-30 | GOVERNOR VALVE | 1 | 72 | T7044BA-72 | SPACER (18x13x1) | 1 |
| 31 | T7044BA-31 | GOVERNOR SPINDLE ③ | 1 | 73 | T7044BA-73 | HOLICO INSERT (M12x1) | 1 |
| 32 | T7044BA-32 | GOVERNOR CAGE ③ | 1 | 74 | T7044BA-74 | OUTER SNAP RING (S-7) ①④ | 1 |
| 33 | T7044BA-33 | GOVERNOR WEIGHT ③ | 2 | 75 | T7044BA-75 | BALL BEARING (6001 ZZ) ① | 1 |
| 34 | T7044BA-34 | ROLL PIN (Ø3x20L) ③ | 2 | 76 | T7044BA-76 | BALL BEARING (6201 ZZ) ① | 1 |
| 35 | T7044BA-35 | ADJUSTING SPACER ③ | 10 | 77 | T7044BA-77 | BALL BEARING (627 ZZ) ①④ | 1 |
| 36 | T7044BA-36 | SPRING ③ | 1 | 78 | T7044BA-78 | BALL BEARING (6204 ZZ) ①④ | 1 |
| 37 | T7044BA-37 | PIN (Ø3x7L) | 1 | 79 | T7044BA-79 | FLAT RING (28x42x5) | 1 |
| 38A | T7044BA-38A | EXHAUST STACK | 1 | 80 | T7044BA-80 | "O" RING ①③ | 1 |
| 41A | T7044BA-41A | MUFFLER STEM ASSEMBLY | 1 | 88 | T7044BA-88 | WHEEL SPINDLE (5/8"x11UNC) | 1 |
| 42 | T7044BA-42 | "O" RING | 1 | 89 | T7044BA-89 | WHEEL HOLDER FLANGE | 1 |
| 47 | T7044BA-47 | CASING | 1 | ##89C | T7044BA-89C | WHEEL HOLDER FLANGE | 1 |
| 48 | T7044BA-48 | CYLINDER REAR PLATE | 1 | 90 | T7044BA-90 | WHEEL GUARD | 1 |
| 49 | T7044BA-49 | CYLINDER | 1 | 91 | T7044BA-91 | WHEEL NUT FLANGE | 1 |
| 50 | T7044BA-50 | ROTOR | 1 | 92 | T7044BA-92 | ALLEN HEAD SCREW (M6x18L) | 1 |
| 51 | T7044BA-51 | ROTOR BLADE ① | 4 | 93 | T7044BA-93 | SPRING PIN (Ø3x22L) | 1 |
| 52 | T7044BA-52 | FRONT PLATE | 1 | 94 | T7044BA-94 | INNER SNAP RING ④ | 1 |
| 53 | T7044BA-53 | REAR PLATE SPACER | 1 | 99 | T7044BA-99 | SPANNER (24MM) | 1 |
| 54 | T7044BA-54 | WHEEL SPINDLE R. COVER ④ | 1 | 100 | T7044BA-100 | SPANNER (6x30x17) | 1 |
| 55A | T7044BA-55A | DRIVING GEAR ④ | 1 | 101 | T7044BA-101 | ALLEN WRENCH (4MM) | 1 |

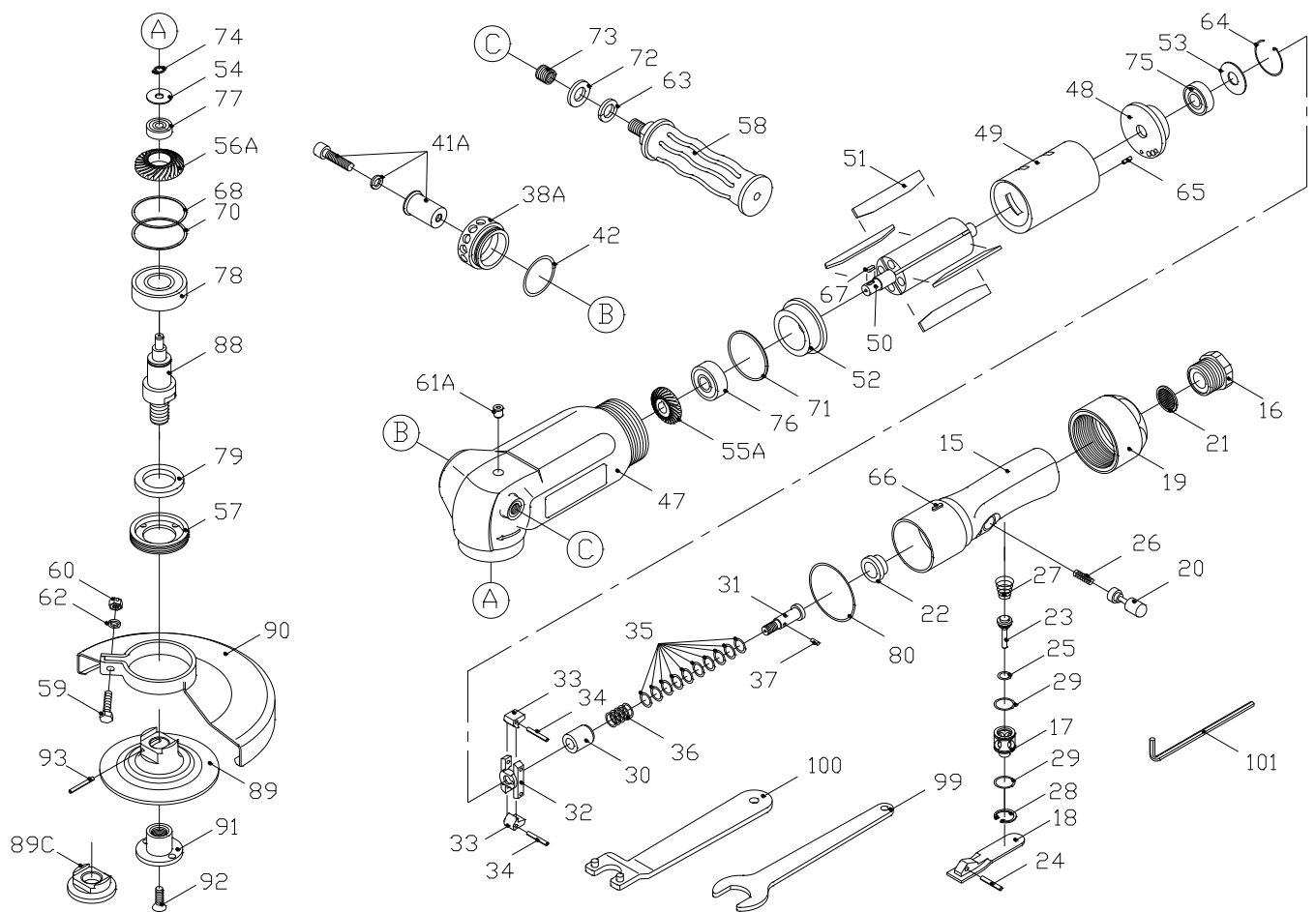
402 721977

Optional Parts

** To get maximum performance and life of your tool, replace the whole set of Parts Kit is highly recommended.

- ① Tune-up kit 722843
- ② Throttle valve overhaul kit 722868
- ③ Governor overhaul kit 722876
- ④ Bevel gear overhaul kit 722884

UNITOR AG-PRO 7



Instruction manual & spare parts list

We service your needs in 2 200 ports...

Fraser/surrey Gaspe Gros Caouna Halifax Hamilton Harbour Grace H Westminster Bc Pictou/halifax Pointe Aux Pic.quebec Port Alfred Port C Port Of Quebec Port Weller Powell River Prince Rupert Roberts Bank Sa halifax Squamish St. Catherines St.john's, Nfld St.romuald Stephens alleyfield Vancouver Victoria Weymouth Windsor Yarmouth Ancud / **Lima** Antofagasta Arica Caldera Concepcion Bay Cuzco Coronel Corral Huasco Las Ventanas Lirquen Lota Penco Puerto Montt Puerto Williams Punta Arenas Quintero San Antonio San Vicente Talcahuano Tocopilla Valparaiso Antilla Bahia Honda Banes Baracoa Cabanas Caibarien Cardenas Casilda Ceiba Hueca Cienfuegos Guantanamo Guayabal Havana Isabel De Sagua Manati Mariel Media Luna Moa Nicaro Niquero Nuevitas Pilon Puerto Padre Santiago De Cuba Sigloo **Genoa** Finn Tanamo Tunas De Zaza Vita Balao Esmeraldas Guayaquil La Libertad Manta Puerto Bolivar Freeport/bahamas Guam Mahdia Acapulco Campeche Ciudad Del Carmen Coatzacoaloos Cozumel Dos Bocas Ensenada Guaymas La Paz Lazaro Cardenas Mazatlan Progreso Puerto Vallarta Salina Cruz Tampico Topolobampo Tuxpan Vera Cruz Bonaire Bullen Bay Curacao Aguadulce Almirante Armuelles Bahia Las Minas Balboa Cristobal Manzanillo Int.term. Vacamonte Callao Chimbote Ilo Matarani Paita Pisco Guayama Guayanilla Mayaguez Ponce San Juan Yabucoa St. Vincent Chaguaramas La Brea Point Fortin Point Lisas Pointe-a-pierre Port Of Spain Tembladora Aberdeen,wa Alameda Albany,n.y. Alexandria, Va Algiers Point Amelia Anacortes, Wa Anchorage,ak Annapolis,md Antioch Aransas Pass Tx Astoria, Or Baltimore Baton Rouge Bayonne Baytown Beaumont Bellingham, Ma Bellingham, Wa Benicia, Ca Boston, Ma Bridgeport Bridgeport, Conn Brooklyn, Ny Brownsville Tx Brunswick Brunswick, Ga ucksport,me Buras Camden Camden, Nj Cameron La Chalmette Charleston, Sc Cheasapeake Chester Chicago Claymont Convent Coos Bay, Or Corpus Chr.tx Crockett Darrow Davant Deer Park Delaware City Destrehan Donaldsonville Dutch Harbor, Ak Eastport, Me Eureka Everett, Wa Fairless Hills Famausta Ferndale wa Freeport Tx Galveston Tx Garville Geismar Georgetown, Sc Gloucester, Nj Good Hope Gramercy Grand Isl aii Hoquiam, Wa Houma Jacksonville Kalama Kalama, Wa Kenai Key V a Loop Terminal Los Angeles Manchester, Wa Manhattan, Ny N ad City, Nc Morgan City Morrisville, Pa Myrtle Grove Naples Nederland Tx New Haven, Conn New Iberia New London New Orleans New York Newington, Nh Newport News, Va Newport, Or Newport, Ri Nikiski Norco Norfolk Oakland Olympia, Wa Orange, **Rotterdam** Tx Palm Beach Panama City, Fl Pasadena Pascagoula, Ms Paulsboro, Nj Pennsauken, Nj Pensacola, Fl Petaluma Philadelphia Piney Point, Md Pittsburg Plaquemine Point Comfort Tx Port Allen Port Angeles, Wa Port Arthur Tx Port Canaveral Port Everglades Port Hueneme Port Isabel Tx Port Manatee, Fl Port Neches Tx Port Royal, Sc Port St. Joe, Fl Port Townsend, Wa Portland, Me Portland, Or Portsmouth Portsmouth, Nh Providence, Ri Queens, Ny Redwood City Reserve Revere, Ma Richmond Richmond, Va Sacramento Salem Salem, Ma San Diego San Francisco Sandwich, Ma Savannah Searsport, Me Seattle Seward Sparrows Point St.petersburg, Fl St.rose Staten Island, Ny Stockton Tacoma, Wa Tampa Texas City The Bronx, Ny The Loop Valdez Vancouver, Wa Venice West Palm Beach Westville, Nj Wilmington, Ca Wilmington, De **Houston** Wilmington,nc Yonkers, Ny Yorktown, Va Fray Bentos Jose Ignacio Montevideo Nueva Palmira Amuay Bay Bajo Grande Cumarebo El Palito El Tablazo Guanta Guaranao Jose Bay La Guaira La Salina Maracaibo Pertigalete Puerto Cabello Puerto La Cruz Puerto Miranda Puerto Ordaz Punta Cardon Punta De Palmas Punto Fijo San Lorenzo, Vz St.croix Aeroskobing Assens Bagenkop Bogense Copenhagen Ebeltoft Enstedvaerket Havn Esbjerg Fakse Ladeplads Havn Fredericia Frederiksund Frederiksvaerk Fredrikshavn Faaborg Gedser Great Belt Grenaa Graasten Gulfhavn Haderslev Halsskov Hanstholm Helsingor Hirtshals Hobro Holbaek Horsens Kalundborg Kertminde Koge Kolding Korsor Lemvig Mariager Marstal **Oslo** Middlefart Naestved Naskov Nyborg Nykobing Falster Nykobing Mors Nykobing Skjaelland Odense Orehoved Falster Randers Ronne Rudkobing Sakskobing Skaelskor Skaerbaek Skagen Skive Sonderborg Stege Stigsnaesvaerkets Havn Svendborg Studstrupvaerkets Havn Thisted Thorshavn Vejle Vordingborg Aabenraa Aalborg Aarhus Kunda Loksa Muuga Paldiski Paljassaare Parnu Tallinn Dalsbruk Hamina/fr.havn Hanko/hangoe Helsinki Ingaa/inkoo Jakobstad Kalajoki Kantvik Kaskinen/kasko Kemi Kemio Korkkola/karleby Kotka Koverhar Kristinestad Lappvik Lovisa Mariehamn Merikarvia Nystad Naantali Oulu Pargas Pori Porvoo/borgaa Rauma Raahe/brahestad Skoeldvik Tammisaari Teijo Tolkis Torneaa Turku Valkom/valko Vaasa Akureyri Isafjordur Reykjavik Arklow Aughinish Bantry Cork Drogheda Dublin Dun Laoghaire Dundalk Foynes Galway Limerick Moneypoint Ringaskiddy Tarbert Waterford Liepaja Mersrags Riga Roja Salacgriva Skulte Ventspils Butinge Klaipeda Agnefest Alta **Piraeus** Arendal Asker Askoy Aukra Aure Averoe Bergen Berlevaag Bodo Boemlo Brattvag Breivika Brevik Baatsfjord Dirdal Drammen Dusavik Egersund Eide Elnesvaagen Eydehavn Fagerstrand Farsund Finnsnes Flekkefjord Floroe Flaam Fosnavaag Fraena Fredrikstad Frei Gamvik **Genoa** Geiranger Gjemnes Glomfjord Gravdal Grimstad Gudvangen Halden Halsaa Hammerfest Harstad Haugesund Hellestyllt Heroeya Hjelmeland Hoeyanger Holla Holmestrand Hommelvik Honningsvaag Horten Husnes Jelsa Jessheim Joerpeland Joessinghamn Kambo Karmoey Kirkenes **Singapore** Krageroe Kristiansand Kristiansund Kvinesdal Kyrksaeterora Kaarsto Larvik Leknes Lillesand Lyngdal Mandal Mehavn Mo I Rana Molde Mongstad Mosjoen Moss Muruvik Maaloey Namsos Narvik Nettet Odda Oelen Oersta Orkanger Porsgrunn Rafnes Randaberg Raubergvika Risoer Sandefjord Sandnes Sandnessjoen Sarpsborg Sauda Skien Skjervoe Slagen Slagentangen Smoela Soevik Sola Sorreisa Sortland Stavanger Stord Sture Sunndalsoera **Dubai** Surnadal Svelgen Svolvaer Tananger Tau Thamshamn Tingvoll Tjeldbergodden Toensberg Tofte Tomrefjord Tromsø Trondheim Tustna Tvedestrand Tyssedal Tysvaer Ulsteinvik Vadsoe Vardoe Verdal Vik Volda Aagotnes Aaheim Aalesund Aalvik Aardal i Ryfylke Aardalstangen Gdansk Gdynia Kolobrzeg Police Swinoujscie Szczecin Arkangelsk Baltiysk De Kastri Kaliningrad Kandalaksha Kavkaz Kronshtadt Lomonosov Murmansk Nakhodka Novorossiysk Primorsk Sakhalin Sakhalin Severomorsk St. Petersburg Svetlyi Taman Temruk Temryuk Tuapse Vladivostok Vostochniy, Port Vostochnyi Vyborg Bohus Brofjorden Falkenberg Gavle Gothenburg Hallstavik Halmstad Helsingborg Hoganas Holmsund Hudiksvall Iggesund Kalmar Karlshamn Karlskrona Karlstad Koeping Landskrona Lidkoping Lilla Edet Luleaa Lysekil Malmoe Mariestad Marstrand Munkedal Norrkoeping Norrsundet Norrtalje Nvnashamn **Rotterdam** Ornskoldsvik Oskarshamn Oxelosund Pitea **Shanghai** Simrishamn Skarhamn Skelleftehamn Skutskar Slite