

NAVADAN PYTHON

Product number: 2009039

User manual



1.	Introduction	2
2.	Inventory list	3
3.	Inventory list - pictures	4
4.	Assembly instructions	5
5.	Operations guide	15
6.	Cleaning diagram	17
7.	Notes	18

1. Introduction

Read this manual carefully before assembly or operation of Navadan Python. It's the responsibility of the employer to ensure this manual is read by the operator. Please preserve this manual.

Contact your local Wilhelmsen Ships Service representative for any spare parts or guidance on same, as all parts of the system is calibrated to each other. Slight deviation in type, dimension or quality of parts may result in unexpected behaviour.

2. Inventory List

Kit Box / Container:

Item No. Qty Unit Part no. Description:

1	1	pc	Wooden box for storage - 291 x 48 x 22 cm /Total Kit Weight 60 Kg
---	---	----	--

Kit Content:

Item No. Qty Unit Part no. Description:

2	1	pc	Glass Fiber / Carbon Fiber Telescopic Pole (20m fully extended)
3	1	pc	Crawler Assembly incl. 3 High Pressure Nozzles
4	20	m	400 Bar High Pressure Hose
5	1	pc	Tripod, base
6	1	set	Tripod, top
7	4	pc	Heavy Duty Caster Wheels
8	1	pc	Trigger Gun (attached to pole)
9	1	bag	Hose clips
10	3	pcs	20 mtr High Pressure Hose 500 bar

3. Inventory list - Pictures

Item 1: Box for transport and storage



Item 5, 6 & 7: Tripod w.
Heavy Duty Castor Wheels
(not assembled)



Item 2: Telescopic pole

Item 4: 20m 400 Bar HP hose
(fitted). Navadan Hotbox
Compatible

Item 3: Wall Crawler Assembly
incl. 3 HP Nozzles

4. Assembly instructions

Mount wheels:

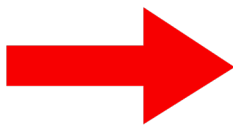
**Step
1**

Mount the wheels to the bottom part of the tripod.
The bottom is the part which already has one wheel mounted to the centre.



Align the bolt with the threaded hole on the bar.

So it looks like this



Tighten the bolt.
Repeat 3 times, one for each tripod-leg.

Assemble tripod:

**Step
2**

Combine the bottom and the top part of the tripod:



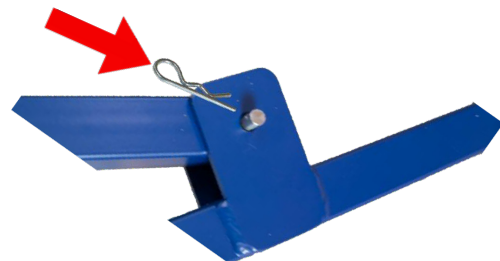
Align the top part of the tripod with the brackets as shown in picture.

Then lock with the locking pins like this:

Align the hole in the leg with the bracket and slide in the locking pin.



Secure the locking pin with the safety pin as shown in the picture.



Repeat for all three legs until each leg is secured to the bottom of the tripod.



Unfolding the tripod:

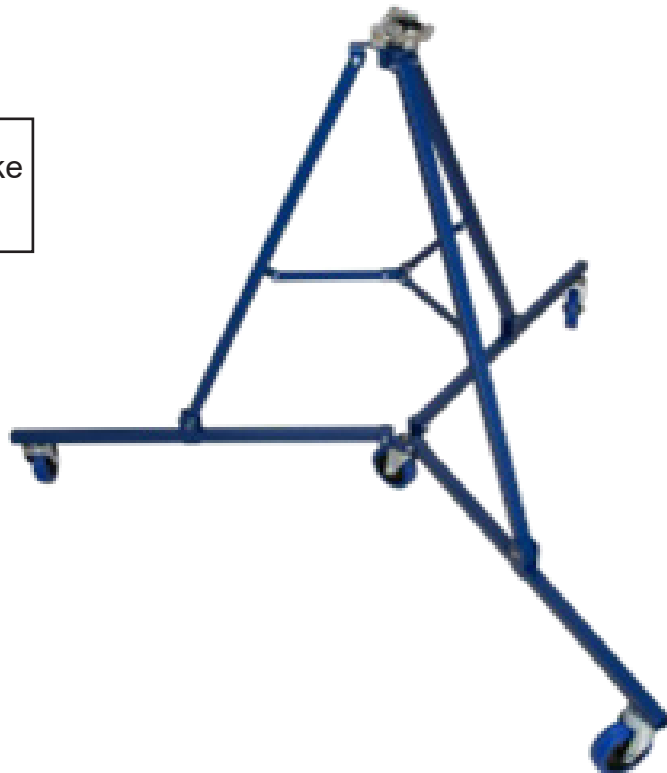
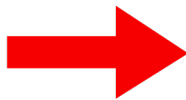
**Step
3**

The tripod should now look like this:



Unfold the tripod by folding down the legs with the wheels attached.

A successfully unfolded tripod will look like the one shown here



Attach barcket:

**Step
4**

Remove the locking pin from the fork on top of the tripod.



Slide in the bracket and secure with the locking pin.

Attach crawler:

**Step
5**

Align and fit crawler
into pole.



Slide crawler, all the way, into pole.



Close the open clamp on pole.



Attach the hose:

**Step
6**



Attach clips to hose in descending size starting with the smallest closest to the head.

Each section of the telescopic pole has two clips.

Make sure to attach the clips reverse from each other to lock the hose in place.



Attach the clips to the pole, slide together to secure the hose.



Mount the trigger:

Step
7

Adjust the trigger comfortable level, below the bracket.



Attach the smaller diameter hose to the angled discharge connection.



So it looks like this
Note: Make sure the hose is properly tightened.



Mount the trigger:

**Step
8**

Attach the high-pressure hose from the high-pressure cleaner at the bottom of the trigger.



So it looks like this
Note: Make sure the hose is properly tightened.



Attach pole:

**Step
9**

Place the pole in the clamp mounted on top of the tripod.
Make sure to position the bracket on the part of the pole labelled:
“ATTACH BRACKET HERE”



Close the bracket around the pole.

Locking bracket:

**Step
10**



Close the lock of the bracket by placing the hook on the lip and folding the lock over it. The hook can be tightened and loosened by turning it. Adjust for smooth fit.

The Navadan Python is now assembled and ready for use.



5. Operations guide

Extend the telescopic pole by loosening the clamps and sliding the inner tube out. extend until resistance can be felt. remember to tighten the clamp again.

Note: It is recommended to start extending the pole from the thickest end for maximum stability.



Starting off

Lift and place the crawler on pole onto the bulkhead starting point (just above lower hopper).

Note: Make sure to position the crawler with correct facing. This is due to the angle of the nozzles.

The bracket should always be facing downwards / towards the surface, as shown in picture.

Push the tripod towards the lower hopper.

The crawler will then move upwards against the bulkhead.



We recommend using the kit at the highest reach first, thus when placing the crawler on the bulkhead, before starting the cleaning operation, make sure to position the crawler in an upright/vertical position (as vertical as possible).

Note: Always start the cleaning operation at the highest cleaning area and work your way downwards.

Start with “working lanes” of approx. 3 - 4 meters in length at a time.

Move the tripod back and forward to clean the desired area, and smoothly shift between working lanes by manoeuvring the tripod so that you work your way sideways until the area is clean.

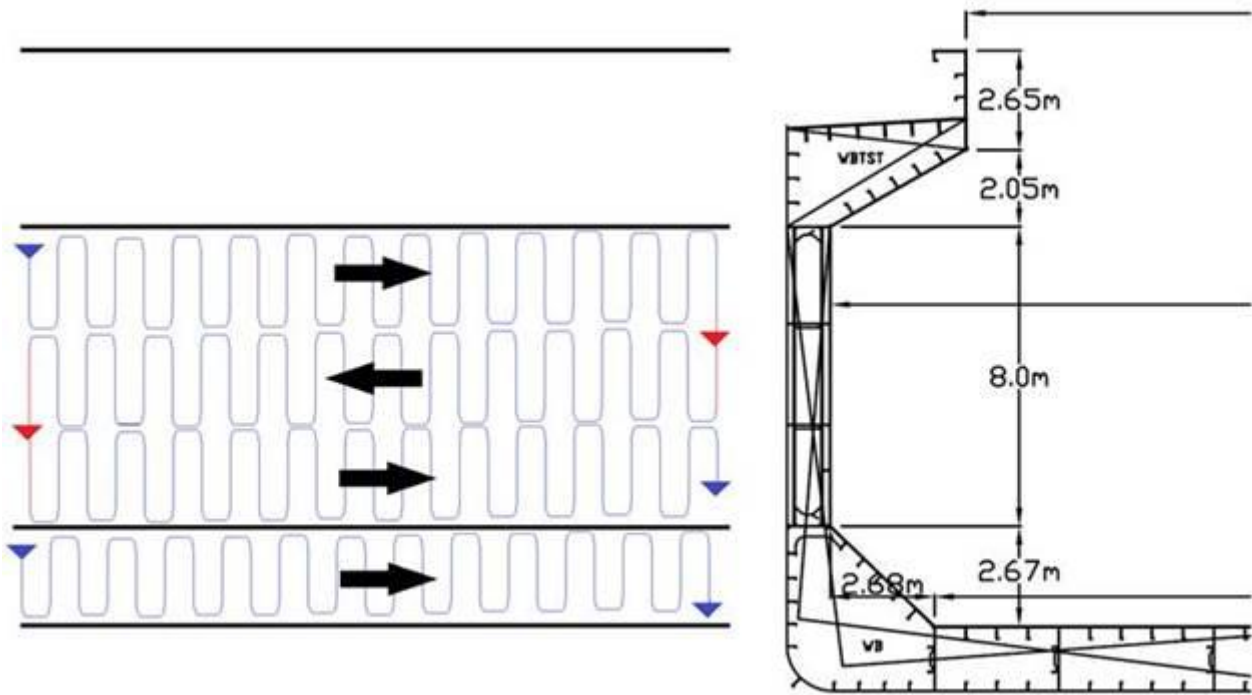
Hereafter work your way downwards to lower lanes, also of approx. 3 - 4 meters in length.

When shifting to lower working areas, make sure to reduce the length of the extension pole according to new distance (Again, make sure the crawler is in an upright/vertical position, or as vertical as possible).



6. Cleaning diagram

Clean the vertical surface with the Navadan Python using 3 sweeps each appr. 3 - 4 meters in height. (see illustration). Do this for the vertical surface until reaching lower hopper, 3m from tanktop.



Clean the vertical surface as shown above, from top down in 3 -4 m sections. When reaching the red arrows shorten the long telescopic pole as appropriate before moving to the next section. This will ensure the pole having the correct angle for easier and safer operation.

wilhelmsen.com

Wilhelmsen Ships Service

Phone: (+47) 67 58 40 00

Fax: (+47) 67 58 40 80

Postal Address:

PO Box 33, NO-1324

Lysaker, Norway

