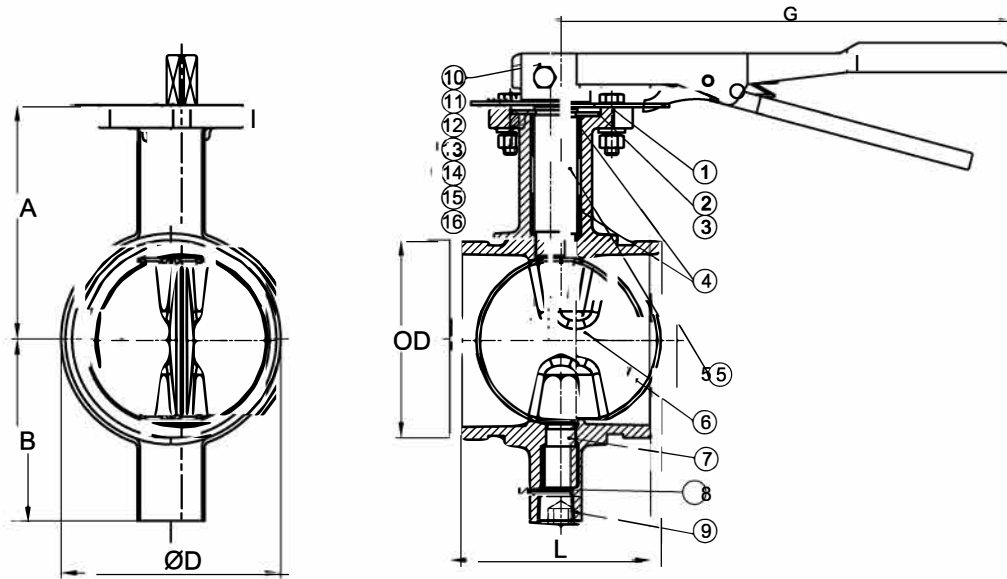


Valves conform to the standards and specifications:

1. The valve structure conform to MSS - SP67 long
2. The valve test accord with UL1091 / FM1112 300 psi
3. The valve connecting flange in accordance with AWWA C606 groove connection standard, etc
4. The body surface coated with epoxy
5. Valve plate of A536 + EPDM rubber can choose NBR
6. Working pressure and working temperature: table 1



Packing	Working pressure	Working temperature
EPDM	300PSI	-20°C~120°C
NBR	300PSI	-20°C~80°C

DN	A	B	ØD	L	G	OD
50	95	78	72	84.5	195/266	60.3
65	98	78	88	98	195/266	73/76.1
80	105	85	98	98	195/266	88.9
100	135	105	127	116	266	114.3
125	148	128	156	149	328	141.3/139.7
150	165	140	185	147.6	328	168.3/165.1
200	204	170	235	134	386	219.1
250	245	205	292	160	386	273
300	277.5	258.3	332.5	165	386	323.85

No.	Name	Material
16	BOLT	SS304
15	PLASTIC COVER	ABS
14	SPRING WASHER	SS304
13	FLAT WASHER	SS304
12	BOLT	SS304
11	NOTCH PLATE	SS304
10	LEVER	MALLEABLE IRON
9	Plug	Galvanized carbon steel surface passivation
8	Adjust Washer	ASTM B150M C63000
7	Under Shaft	SS410/SS416/SS420
6	Disc	ASTM A536 65-45-12+EPDM/NBR
5	Top Shaft	SS410/SS416/SS420
4	Bushing	ASTM B150M C63000
3	Philips countersunk head screw	Galvanized carbon steel surface passivation
2	Gland	ASTM A570 Gr.A
1	Body	DI ASTM A536 65-45-12

Manufacture/Supplier:

SHOP DRAWING

FIG NO. 25GG

EGO

						DRAWN	Date	TITLE: Grooved butterfly valves DN50-DN300 300PSI/250PSI/200PSI
						Checked	Date	
						Approved	Date	
						Projection	ALL DIM'S IN: mm DO NOT SCALE FROM DRAWING	DRAWING NO. :
REV	BY	APP	Description	Date				25GG-50-300-300/250/200PSI-00 R0