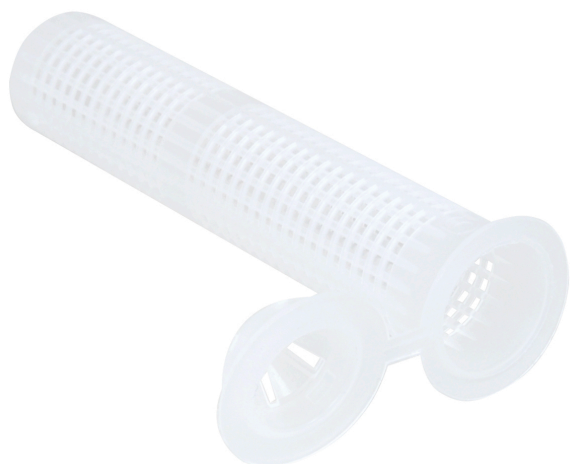


WIS Plast Ankerhylse

16 - 20 mm

(L 03 125)



Funktioner og fordele

- end cap prevents resin leaking out of the sleeve in overhead installations
- sleeves for M8, M10 and M12 threaded rods
- for use with WPSF100 & WVSF200 chemical anchoring systems in hollow substrates

Art.nr.	Code	D (mm)	L	For	Pakke1
6097017	WIS PS 16x85	16	85 mm	M8, M10 threaded bar	10
6097018	WIS PS 16x130	16	130 mm	M8, M10 threaded bar	10
6097020	WIS PS 20x85	20	85 mm	M12 threaded bar	10