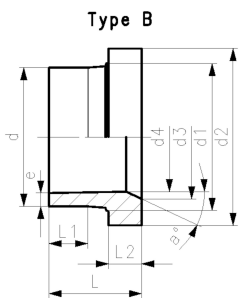
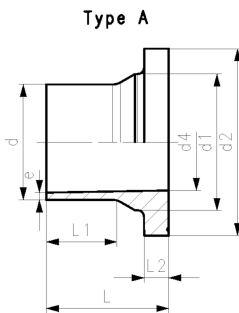


Flange adaptor PE100 SDR17/17.6
Combined jointing face: flat and serrated

Model:

- Long spigot
- Material: PE100
- For IR, butt- and electro fusion
- Suitable for flange connections to metric (from d110 also to ANSI/ASME B16.5)
- Up to d315, suitable for butterfly valve type 567/578. Above use ecoFIT adaptor for butterfly valves SDR17.6 (d355-d1200)
- Gasket d20-d630: Profile flange gasket NBR No. 45 44 07, EPDM No. 48 44 07
- Gasket d710-d1000: flat gasket EPDM No. 48 40 03
- Type A without chamfer, Type B with chamfer
- 5 bar Gas / 10 bar Water

*Not suitable for butterfly valves



d (mm)	DN (mm)	FM	Code	Weight (kg)	PF
50	40	IR	753 800 085	0.107	2 51 301 001
63	50	IR	753 800 086	0.168	2 51 301 001
75	65	IR	753 800 087	0.260	2 51 301 001
90	80	IR	753 800 088	0.367	2 51 301 001
110	100	IR	753 800 089	0.571	2 51 301 001
125	100	IR	753 800 090	0.684	2 51 301 001
140	125	IR	753 800 091	1.035	2 51 301 001
160	150	IR	753 800 092	1.342	2 51 301 001
180	150	IR	753 800 093	1.469	2 51 301 001
200	200	IR	753 800 094	2.297	2 51 301 001
225	200	IR	753 800 095	2.456	2 51 301 001
250	250		753 800 096	3.500	2 51 301 002
280	250		753 800 097	3.714	2 51 301 002
315	300		753 800 098	5.470	2 51 301 002
355	350		753 800 299	7.100	2 51 301 008
400	400		753 800 300	9.600	2 51 301 008
450	500		753 800 301	16.400	2 51 301 008
500	500		753 800 302	18.500	2 51 301 008
*	560	600	753 800 103	27.500	2 51 301 008
*	630	600	753 800 104	30.000	2 51 301 008
*	710	700	753 800 105	39.376	2 51 301 008
*	800	800	753 800 106	50.759	2 51 301 008
*	900	900	753 800 107	64.202	2 51 301 008
*	1000	1000	753 800 108	79.495	2 51 301 008

d (mm)	d1 (mm)	d2 (mm)	d3 (mm)	d4 (mm)	L (mm)	L1 (mm)	L2 (mm)	e (mm)	Type	a°
50	61	88		44	90	62	12	3.0	A	
63	75	102		55	106	70	14	3.8	A	
75	89	122		66	130	75	16	4.5	A	
90	105	138		79	140	103	17	5.4	A	
110	125	158		96	160	117	18	6.6	A	
125	132	158	114	110	170	125	25	7.4	B	30
140	155	188	127	123	200	147	25	8.3	B	30
160	175	212	151	141	200	147	25	9.5	B	30
180	180	212		158	200	170	30	10.7	A	
200	232	268	203	176	200	128	32	11.9	B	30
225	235	268	210	198	200	138	32	13.4	B	30
250	285	320	245	220	220	148	35	14.8	B	25
280	291	320	265	246	230	154	35	16.6	B	30
315	335	370	300	277	242	166	36	18.7	B	30
355	373	430	346	310	260	170	33	21.1	B	21
400	427	482	395	350	282	185	36	23.7	B	21
450	514	585		400	316	205	46	26.7	A	

Data sheet

valid from: 3/16/18



	d	d1	d2	d3	d4	L	L1	L2	e	Type	a°
	(mm)	(mm)	(mm)	(mm)	(mm)	(mm)	(mm)	(mm)	(mm)		
	500	530	585		400	337	220	46	29.7	A	
*	560	615	685		493	365	230	60	33.2	A	
*	630	642	685		555	385	250	60	37.4	A	
*	710	737	800		626	400	280	50	42.1	A	
*	800	840	905		705	400	280	52	47.4	A	
*	900	944	1005		793	400	260	55	53.3	A	
*	1000	1047	1110		881	400	260	60	59.3	A	

The technical data are not binding. They neither constitute expressly warranted characteristics nor guaranteed properties nor a guaranteed durability. They are subject to modification. Our General Terms of Sale apply.

Georg Fischer Piping Systems Ltd, Postfach, CH-8201 Schaffhausen/Switzerland

Phone +41 -(0)52-631 1111

e-mail: info.ps@georgfischer.com

Internet: <http://www.gfps.com>