

SPAK TIL DREIESPJELDVENTIL FIG. 283B.KA7

Lever for butterfly valve FIG. 283B.KA7



Dimensjoner

3 størrelser:

DN40 – DN100
DN125 – DN150
DN200

Dimensions

3 sizes:

DN40 – DN100
DN125 – DN150
DN200

Material

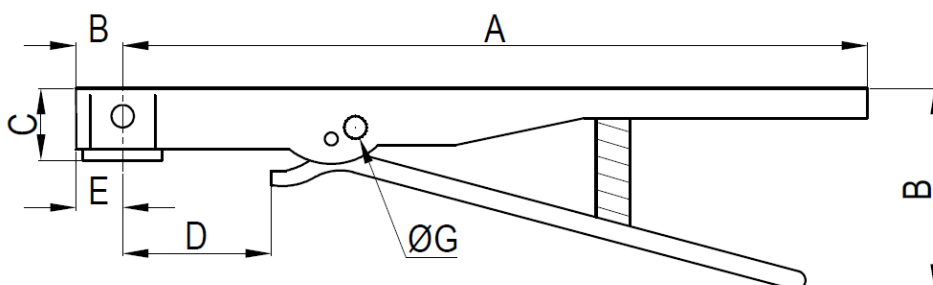
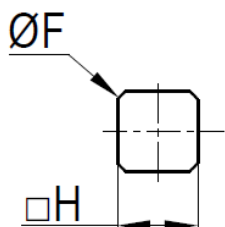
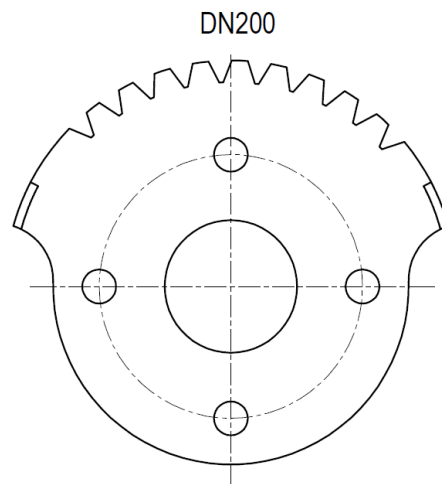
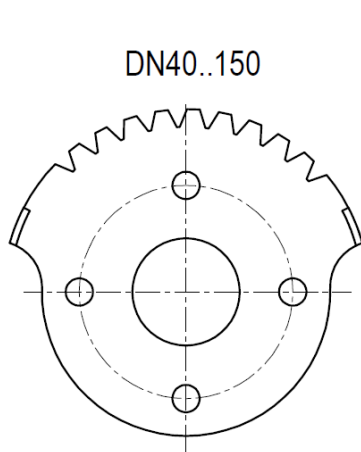
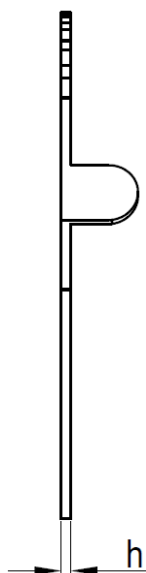
Støpejern, GGG40

Material

Ductile iron, GGG40

MÅLTABELL OG ARTIKKELNUMMER/MEASUREMENTS AND PART NO.

DN	NRF nr./Part No.
DN 40 – DN 100	5515517
DN 125 – DN 150	5515518
DN 200	5515519



DN	TOP	ØF	ØG	H	Notch Plate		Handle					Weight (kg)
					h	A	B	C	D	E		
40..100	F07	14.1	8	11	2,5	251	58	26	57	18	0,4	
125-150	F07	18.1	8	14	2,5	282	73	26	57	18	0,7	
200	F07	22.2	8	17	2,5	282	87	30	77	26	0,9	