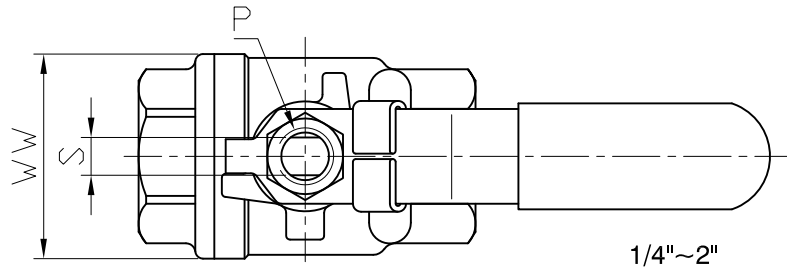


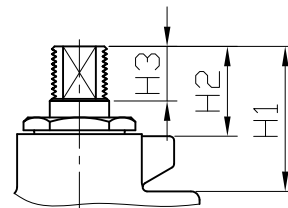
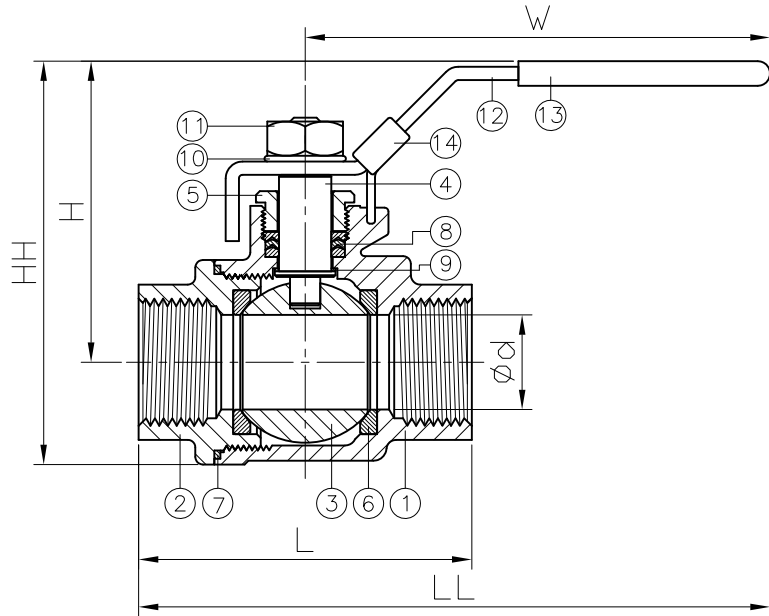
DN	d	L	LL	H	H1	H2	H3	HH	W	WW	S	P	Torque (N-m)	Weight (kg)
8	11.6	60.5	135	54.1	25	17.1	11	69.5	103	37	5	5/16"W	4.1	0.3
10	13	60.5	135	54.1	25	17.1	11	69.5	103	37	5	5/16"W	4.1	0.3
15	15	64	136.5	56.7	26	17.7	11	73.4	103	37	5	5/16"W	4.4	0.3
20	20	77	161.8	63.7	31.7	22.7	13.5	86.3	126	45	6.5	3/8"W	5.9	0.6
25	25	90	204.2	76.7	37.3	26.1	15.7	101.5	164	45	8	7/16"W	7.4	0.8
32	32	100	208.3	82.7	37.7	24.9	15.7	113.5	164	63	8	7/16"W	8.8	1.3
40	38	118	247.5	95.5	42.1	27.2	17	137.8	190	75	9	1/2"W	13.2	2
50	50	138	257.5	105.3	43.3	28.3	17	156.3	190	92.5	9	1/2"W	16.2	3.1
65	65	166.5	333.5	142	59.3	42.7	27.5	199.5	247	114	12	3/4"W	44.1	6
80	80	193	346.5	153	59	40.5	27.5	221.5	247	137	12	3/4"W	46.6	10.1
100	100	260	452	182.3	79.5	54.7	39.8	263	320	168	16	1"W	90	21

unit:mm



NPS	d	L	LL	H	H1	H2	H3	HH	W	WW	S	P	Torque (in-lb)	Weight (lb)
1/4"	0.46	2.38	5.31	2.13	0.98	0.67	0.43	2.74	4.06	1.46	0.2	5/16"W	36.3	0.7
3/8"	0.51	2.38	5.31	2.13	0.98	0.67	0.43	2.74	4.06	1.46	0.2	5/16"W	36.3	0.7
1/2"	0.59	2.52	5.37	2.23	1.02	0.7	0.43	2.89	4.06	1.46	0.2	5/16"W	38.9	0.7
3/4"	0.79	3.03	6.37	2.51	1.25	0.89	0.53	3.4	4.96	1.77	0.26	3/8"W	52.2	1.3
1"	0.98	3.54	8.04	3.02	1.47	1.03	0.62	4	6.46	1.77	0.31	7/16"W	65.5	1.8
1-1/4"	1.26	3.94	8.2	3.26	1.48	0.98	0.62	4.47	6.46	2.48	0.31	7/16"W	77.9	2.9
1-1/2"	1.5	4.65	9.74	3.76	1.66	1.07	0.67	5.43	7.48	2.95	0.35	1/2"W	116.8	4.4
2"	1.97	5.43	10.14	4.15	1.7	1.11	0.67	6.15	7.48	3.64	0.35	1/2"W	143.4	6.8
2-1/2"	2.56	6.56	13.13	5.59	2.33	1.68	1.08	7.85	9.72	4.49	0.47	3/4"W	390.3	13.2
3"	3.15	7.6	13.64	6.02	2.32	1.59	1.08	8.72	9.72	5.39	0.47	3/4"W	412.4	22.3
4"	3.94	10.24	17.8	7.18	3.13	2.15	1.57	10.35	12.6	6.61	0.63	1"W	796.6	46.3

unit:in



ITEM	PARTS	MATERIAL
1	BODY	1.4408
2	CAP	
3	BALL	ASTM A351-CF8M
4	STEM	ASTM A276-316
5	GLAND NUT	AISI 304
6	SEAT	RTFE
7	SEAL	PTFE
8	PACKING	
9	THRUST WASHER	AISI 304
10	SPRING WASHER	
11	NUT	
12	HANDLE	STAINLESS STEEL
13	HANDLE SLEEVE	PVC
14	LOCKING DEVICE	STAINLESS STEEL

1/4"~1" PN150
 1-1/4"~2" PN100
 2-1/2"~4" PN63

HAITIMA CORPORATION
 P.O.BOX 34-36 TAIPEI
 Tel:886-2-26585800
 E-mail:haitima@haitima.com.tw
 TAIWAN R.O.C. www.haitima.com.tw
 Fax:886-2-26582266



HAITIMA CORPORATION

CHECK BY	DRAWING BY	DATE	SPECIFICATION	2-PC Screwed End Ball Valve
	Sean	May.03.2023	MATERIAL	1.4408
			PROCESS/Nr.	
			UNIT / SCALE	mm

△			
△			
△			
Revise	Description	Date	Approve

DRAWING NO.

2006072HL-23