

# TECHNICAL DATASHEET



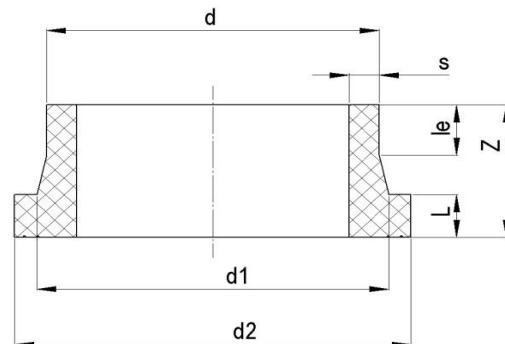
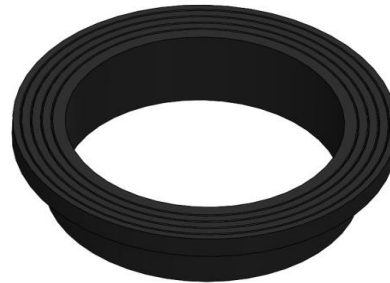
## FLANGE ADAPTOR

00 Update - 11/2017

### TECHNICAL DATA

Article No	001 115 1101 0225
d (mm)	225
d1 (mm)	238
d2 (mm)	268
d3 (mm)	
le (mm)	61
L (mm)	24
Z (mm)	120
s (mm)	13,4
Weight (Kg)	1,47
Box Quantity (pcs)	6
Box Dimension (pcs)	54X29X42

### INJECTION MOULDED



### IDENTIFICATION OF PRODUCT

D(mm)	225
SDR	17
RAW METARIAL	PE 100
PRESSURE CLASS	10 Bar Water 5 Bar Gas
TRADEMARK	NTG
EXECUTION	Injection Moulded
STANDARD	EN 12201-3 EN 1555-3 AS /NZS 4129

### SPECIFICATION

Short Spigot

Tolerance on diameters and thickness according to the standards. The other dimensions are specialized. Tolerance  $\pm 5\%$ . NTG PLASTIK reserves all the right to change any information without giving prior notice. The production, distribution and utilization of this document without explicit authorization is prohibited.