

A BIS Metal Pipe Clamps with Lining

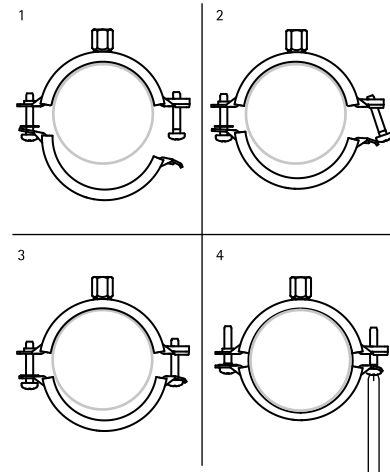
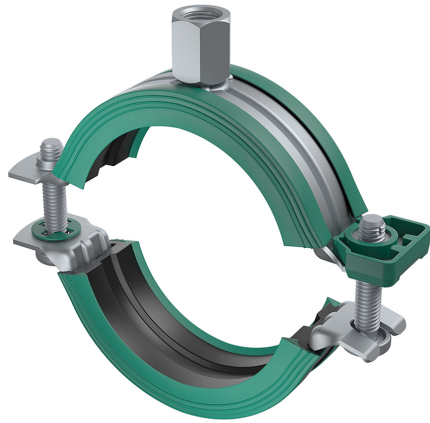
walraven

Bifix® G2 with Lining (M8/10) (BUP1000)

(A 05 52)

for steel, copper, cast iron and plastic (multilayer) pipe 10 - 169 mm

M8/10



Features and benefits

- two-screw clamp
- 2 component rubber lining provides easy positioning of the pipe during installation
- when the clamp is closed, the pipe rests on soft black rubber lining for increased noise reduction
- material: steel
- surface protection:
 - product is part of the BIS UltraProtect® 1000 system
 - suitable for in- and outdoor applications
 - stands min. 1,000 hours salt spray test (max. 5% red rust) according to ISO 9227

Part No.	D (mm)	D (°)	DN	G	B (mm)	H (mm)	h (mm)	b x s (mm)	F _{az} (N)	F _{az} (kg)	Pack 1	App.
3108 5 014	10 - 14	1/4	8	M8/10	59	49	29	20 x 1.25	700		50	pc.
3108 5 019	15 - 19	3/8	10	M8/10	63	53	31	20 x 1.25	700		50	pc.
3108 5 023	20 - 23	1/2	15	M8/10	68	57	33	20 x 1.25	700		50	pc.
3108 5 028	25 - 28	3/4	20	M8/10	74	63	36	20 x 1.25	700		50	pc.
3108 5 035	31 - 35	1	25	M8/10	80	68	39	20 x 1.25	700		50	pc.
3108 5 039	36 - 39	-	-	M8/10	84	72	41	20 x 1.25	700		50	pc.
3108 5 045	40 - 45	1 1/4	32	M8/10	91	79	45	20 x 1.25	700		50	pc.
3108 5 052	48 - 52	1 1/2	40	M8/10	97	85	48	20 x 1.25	700		50	pc.
3108 5 058	54 - 58	-	-	M8/10	104	92	51	20 x 1.25	700		50	pc.
3108 5 064	60 - 64	2	50	M8/10	109	99	54	20 x 1.25	700		50	pc.
3108 5 070	66 - 70	-	-	M8/10	118	110	58	20 x 1.50	800		50	pc.
3108 5 079	75 - 79	2 1/2	65	M8/10	125	117	62	20 x 1.50	800		50	pc.
3108 5 083	80 - 83	-	-	M8/10	131	124	65	20 x 1.50	800		50	pc.
3108 5 091	88 - 91	3	80	M8/10	142	133	70	23 x 2.00	1,700		25	pc.
3108 5 097	92 - 97	-	-	M8/10	147	-	73	23 x 2.00	1,700		25	pc.
3108 5 105	100 - 105	-	-	M8/10	155	147	77	23 x 2.00	1,700		25	pc.
3108 5 115	108 - 115	4	100	M8/10	163	156	81	23 x 2.00	1,700		25	pc.
3108 5 130	125 - 130	-	-	M8/10	180	172	89	23 x 2.00	1,700		25	pc.
3108 5 140	133 - 140	5	125	M8/10	189	181	94	23 x 2.00	1,700		25	pc.
3108 5 160	152 - 160	-	-	M8/10	208	-	102	23 x 2.00	2,000	200	25	pc.
3108 5 169	165 - 169	6	150	M8/10	225	211	111	25 x 2.50	2,000		10	pc.

