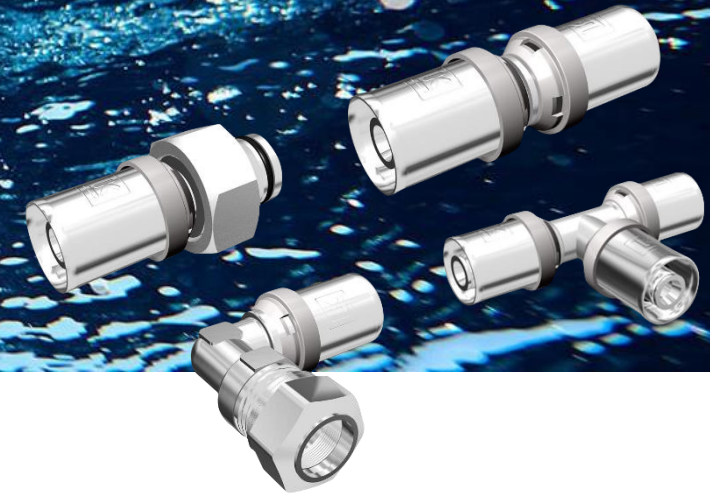


# Environmental Product Declaration

In accordance with ISO 14025 and EN 15804:2012+A2:2019



## LK PressPex Fittings, Straight/Elbow/T-piece & Connection LK Systems AB

Programme: The International EPD® System, [www.environdec.com](http://www.environdec.com)  
Programme operator: EPD International AB  
EPD registration number: S-P-08280  
Publication date: 2023-04-17  
Valid until: 2028-04-17

*An EPD should provide current information and may be updated if conditions change. The stated validity is therefore subject to the continued registration and publication at [www.environdec.com](http://www.environdec.com)*

## Company information

<b>Owner of the EPD:</b>	LK Systems AB Johannesfredsvägen 7 168 69 Bromma Sweden
<b>Contact:</b>	<a href="mailto:info@lksystems.se">info@lksystems.se</a> <a href="https://www.lksystems.se/">https://www.lksystems.se/</a>
<b>Name and location of production site:</b>	Rifeng Enterprise Group Co.,Ltd China
<b>Product-related or management system-related certifications:</b>	Safe Water Installation

The EPD owner has the sole ownership, liability, and responsibility for the EPD.

EPDs within the same product category but registered in different EPD programmes, or not compliant with EN 15804, may not be comparable. For two EPDs to be comparable, they must be based on the same PCR (including the same version number) or be based on fully-aligned PCRs or versions of PCRs; cover products with identical functions, technical performances and use (e.g. identical declared/functional units); have equivalent system boundaries and descriptions of data; apply equivalent data quality requirements, methods of data collection, and allocation methods; apply identical cut-off rules and impact assessment methods (including the same version of characterisation factors); have equivalent content declarations; and be valid at the time of comparison. For further information about comparability, see EN 15804 and ISO 14025.

## Programme information

<b>Programme:</b>	The International EPD® System
<b>Address:</b>	EPD International AB
	Box 210 60
	SE-100 31 Stockholm
	Sweden
<b>Website:</b>	<a href="http://www.environdec.com">www.environdec.com</a>
<b>E-mail:</b>	<a href="mailto:info@environdec.com">info@environdec.com</a>
CEN standard EN 15804 serves as the Core Product Category Rules (PCR)	
Product category rules (PCR): 2019:14, Construction products (EN 15804:A2) (1.2)	
PCR review was conducted by: Claudia A. Peña, The Technical Committee of the International EPD® System.	
Contact: <a href="mailto:info@environdec.com">info@environdec.com</a>	
Independent third-party verification of the declaration and data, according to ISO 14025:2006:	
<input type="checkbox"/> EPD process certification <input checked="" type="checkbox"/> EPD verification	
Third party verifier: Daniel Böckin, Miljögiraff AB, PhD	
Miljögiraff AB, <a href="mailto:daniel@miljogiraff.se">daniel@miljogiraff.se</a> .	
Approved by: The International EPD® System.	

## Company information

LK Systems is the leading manufacturer of easy-to-install systems for heating and tap water distribution in the Nordics. Through our prefabrication factory, we also provide tailor-made solutions that simplify the installation process even further. From idea to final solution, you can be sure of the smartest answers for your everyday challenges, today and tomorrow.

For the simpler, smarter everyday

Simpler. Smarter. More sustainable. At LK, we believe there's a better way to do everything. That's why – from water, heating and hydronic solutions to pipe extrusion – we push for innovation over status quo and simplicity over complexity. It's a belief all of us at LK apply to every product and solution we create



## Product information

Press fittings for connection of LK PAL and LK PE-X Universal Pipe. LK PressPex fittings is primarily intended for heating, potable water and cooling water systems and may not be used for the distribution of gas. LK PressPex fittings comes in different types and dimensions. All parts of the LK PressPex fittings that are in contact with water is made of DZR (dezincification-resistant brass).

See additional information for product included.

Further information can be found at <https://www.lksystems.se/>

The EPD represents several product versions, that comes in different sizes and shapes. The EPD is an average EPD and the declared unit is based on LK PressPex T-Piece (1878013). The result presented in the EPD has the average result of all products declared and the variations between the products stays within 10% (GWP-GHG). See appendix for total weight of the products included in the EPD.

## LCA information

Functional unit / declared unit	In accordance with EN 15804 + A2 the declared unit is mass 1 kg.
Time representativeness:	2022
Database:	Ecoinvent 3.8. - "allocation cut off by classification" is used throughout the study.
LCA software used:	SimaPro 9.4.0.2
Geographical scope	Production: China Construction site: Sweden
LCA Report	LK Systems AB, Report no. 14

### Description of system boundaries:

The scope of the EPD is a cradle to gate with options, including A4, A5, C and D. See Table 1 for the modules declared. The system boundary mean that all processes needed for raw material extraction, transport, manufacturing and disposal are included in the study. Figure 1. gives an overview of the included processes.

**Table 1**, Modules declared, geographical scope, share of specific data (in GWP-GHG indicator) and data variation

	Product stage			Construction process stage		Use stage							End of life stage			Resource recovery stage	
	Raw material supply	Transport	Manufacturing	Transport	Construction installation	Use	Maintenance	Repair	Replacement	Refurbishment	Operational energy use	Operational water use	De-construction demolition	Transport	Waste processing		Disposal
Module	A1	A2	A3	A4	A5	B1	B2	B3	B4	B5	B6	B7	C1	C2	C3	C4	D
Modules declared	X	X	X	X	X	ND	ND	ND	ND	ND	ND	ND	X	X	X	X	X
Geography	CN	CN	CN	GLO	SE								SE	SE	SE	SE	SE
Specific data used	Specific data 27% Partly specific 63%					-	-	-	-	-	-	-	-	-	-	-	-
Variation – products	<10%					-	-	-	-	-	-	-	-	-	-	-	-
Variation – sites	0%					-	-	-	-	-	-	-	-	-	-	-	-
<p>X = Modules included in the analysis      ND = Module not declared      O= Optional modules</p>																	

## Content information

Table 2, shows the weight for the raw material of the declared product.

Product components	Weight, kg	Post-consumer material, weight-%	Renewable material, weight-%
Brass	0,819	66	0
Stainless steel	0,16	0	0
Plastic	0,015	0	0
Rubber	0,005	0	0
Nickel	0,001	0	0
TOTAL	1	66	0
Packaging materials	Weight, kg	Weight-% (versus the product)	
Cardboard box	0,032	3,2	
Plastic	0,006	0,6	
Pallet	0,001	0,1	
TOTAL	0,039	3,9	

Declared product contains dangerous substances, lead, from the candidate list of SVHC for Authorisation. The content of lead is  $\leq 1,6\%$ .

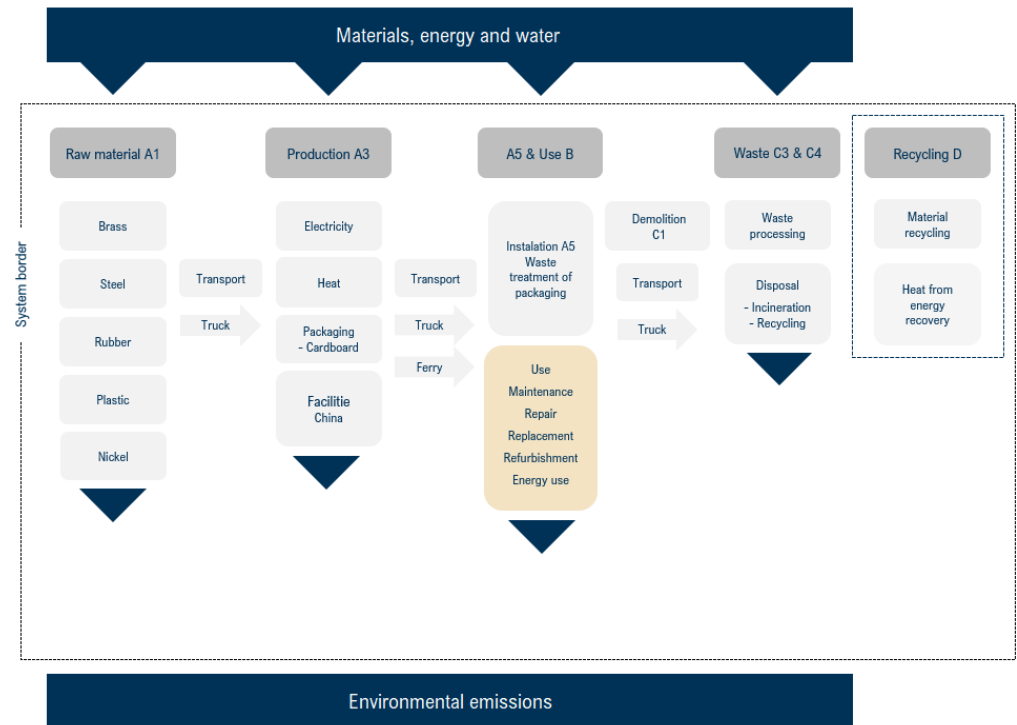


Figure 1, overview of the included processes. Light gray represents modules included, yellow represent models not declared.



## Product life-cycle

### Raw material supply, transport, manufacturing and packaging (A1-A3)

The raw materials that are included and calculated in the EPD are the material content for the product and the packaging.

LK PressPex fittings consist mostly of brass and smaller parts of steel, rubber and plastic. The brass delivers in bars that are cut in a machine and then hot forging to the right shape. After the correct shape is made, the product is sandblasted to smooth the surface. Then the fittings that comes with nickel get plated. When the shape of the product is completed, it is machining and then polished. When the polishing of the brass is completed, the other components are assembled to the final product. After the manufacturing of the product is completed and pressure tested, it is packed in cardboard box, which is then stacked on a pallet.



Figure 2 shows the process flow for LK PressPex fittings.

## Transport & installation (A4-A5)

Transportation impacts represent the transport from the final product's delivery to the construction site. The transport distance is based on average distance. The transportation is performed by truck with fuel and ferry. It is assumed that there are no environmental aspects during installation of the product, except the waste management of packaging after installation.

## Product end of life (C1-C4, D)

The product end of life (C1) is assumed that there are no environmental aspects during demolition of the product. Brass and steel are fully recyclable materials and has a strong market position, therefore assumptions have taken that the product will end up in material recycling at 95% when the building, where the product is installed, is demolished and that the plastic parts end up in combustible waste afterwards. The metal that does not end up in recycling go to combustible waste.

The cardboard box is assumed to be material recycling. The finished products are packed on a wooden pallet with packaging film. It has been assumed that the wooden pallet is reused and that the plastic ends up in combustible waste. The product assumed to be sent to the nearest waste facility. The benefits in the resource recovery stage will be mostly material recycling and a smaller part energy recovery.

## Cut-off rules

Life cycle inventory data shall according to EN 15804 include a minimum of 95% of total inflows (mass and energy) per module. In addition, if less than 100% of the inflows are accounted for, proxy data or extrapolation should be used to achieve 100% completeness.

## Background data

The data quality of the background data is considered good. All specific data that includes processes, volume of different materials, energy & water usage and transport distance has been collected by questionnaire and personal contact with the manufacturer. Ecoinvent database has been used. Ecoinvent is the world's biggest LCI data library and contains data for the specific geographical regions relevant for this study, which have been analysed to be the most suitable for the various steps in the process. Information on biogenic carbon content is calculated with the formula from EN 350-2 and information from IVL.

Collected data represent average yearly data for 2022 and assumed to be representative for the EPDs period of validity of 5 years.

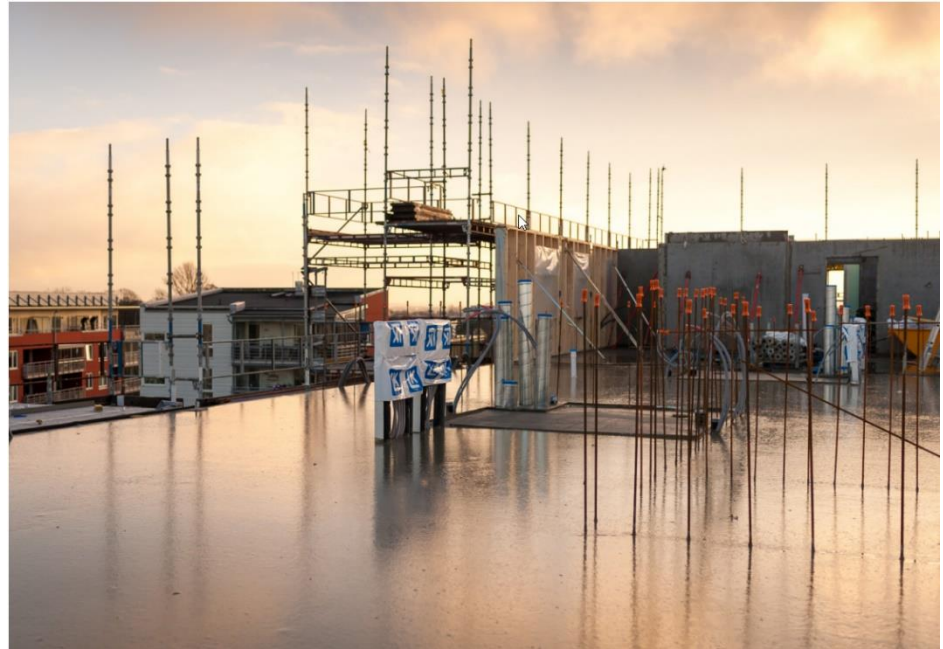
## Electricity data

The electricity consumption in the A3 module accounts for less than 30% of the total energy use in module A1-A3. The electricity used is an electricity mix, low voltage, market for China, from Ecoinvent 3.8.

## Allocation and assumptions

The declare unit values for 1 kg of product that is used in this study and is calculated, based on the total product weight produced during the year studied. The content of raw material can vary slightly between the different dimensions of the product and are examined with high accuracy that they variation of GWP-GHG stays within 10%. Data is allocated for the energy use of the declared unit. The allocation is based on production rate with complexity and high accuracy. The raw material necessary for the manufacturing and the amount of packaging is allocated to product, based on the amount of material used to manufacture the declare unit, including waste. Allocation is made with complexity and high accuracy. The declared unit is based on LK PressPex T-Piece (1878013). The variance of the declared products is less than 10%, that is based according to data quality requirements outlined in PCR 2019:14.

The used product is assumed to be transported 50 km to the nearest waste disposal facility. The waste treatment assumption has resulted in that the product will get material recycle as metal. The waste treatment builds and presupposes that the product is installed in the building and that it is de-construct when the building demolished. The product is assumed to be material recycled at 95% and the cardboard box is assumed to be material recycled at 78%. The plastic part in the product and in the packaging are assumed to be incinerated with energy recovery efficiency at 61%.



## Recycling of packaging and product

Within the framework of producer responsibility, LK are affiliated with FTI, the Packaging and Newspaper Collection, which is the business community's collection system for recycling packaging. Packaging shall recycle as carton and plastic. None of the packaging material are classified as hazardous waste. The product shall be material recycled as metal.



## Environmental information

Potential environmental impact – mandatory indicators according to EN 15804.  
Results of declared unit of the study.

### Results per declared unit

Indicator	Unit	Tot.A1-A3	A4	A5	C1	C2	C3	C4	D
GWP-fossil	kg CO2 eq.	2,53E+00	2,76E-01	1,46E-02	0	6,56E-03	4,69E-02	5,88E-04	-1,61E+00
GWP-biogenic	kg CO2 eq.	2,21E-03	5,46E-05	1,11E-02	0	6,41E-06	6,28E-06	7,79E-04	-1,34E-02
GWP-luluc	kg CO2 eq.	3,33E-03	1,73E-04	4,33E-07	0	2,67E-06	9,20E-07	2,35E-07	-2,87E-03
GWP-total	kg CO2 eq.	2,54E+00	2,77E-01	2,57E-02	0	6,57E-03	4,69E-02	1,37E-03	-1,63E+00
ODP	kg CFC 11 eq.	1,35E-07	5,75E-08	1,90E-10	0	1,54E-09	3,14E-10	1,35E-10	-8,51E-08
AP	mol H+ eq.	6,99E-02	6,58E-03	7,71E-06	0	3,72E-05	1,19E-05	4,18E-06	-6,03E-02
EP-freshwater	kg PO <sub>4</sub> <sup>3-</sup> eq.	1,58E-02	3,64E-05	3,73E-07	0	1,36E-06	8,26E-07	2,01E-06	-1,45E-02
EP-freshwater	kg P eq.	5,15E-03	1,19E-05	1,22E-07	0	4,43E-07	2,69E-07	6,54E-07	-4,72E-03
EP-marine	kg N eq.	4,93E-03	1,64E-03	3,69E-06	0	1,35E-05	6,09E-06	1,58E-06	-3,79E-03
EP-terrestrial	mol N eq.	6,13E-02	1,82E-02	3,45E-05	0	1,47E-04	5,44E-05	1,70E-05	-4,88E-02
POCP	kg NMVOC eq.	1,74E-02	4,76E-03	8,97E-06	0	4,21E-05	1,38E-05	5,02E-06	-1,36E-02
ADP-minerals&metals <sup>2</sup>	kg Sb eq.	1,51E-03	5,56E-07	3,67E-09	0	2,20E-08	7,60E-09	1,97E-09	-1,42E-03
ADP-fossil <sup>2</sup>	MJ	3,01E+01	3,73E+00	8,98E-03	0	1,01E-01	9,04E-03	1,07E-02	-1,91E+01
WDP <sup>2</sup>	m3	1,59E+00	8,13E-03	2,26E-04	0	3,32E-04	5,51E-04	9,68E-05	-1,28E+00

### Acronyms

GWP-fossil = Global Warming Potential fossil fuels; GWP-biogenic = Global Warming Potential biogenic; GWP-luluc = Global Warming Potential land use and land use change; ODP = Depletion potential of the stratospheric ozone layer; AP = Acidification potential, Accumulated Exceedance; EP-freshwater = Eutrophication potential, fraction of nutrients reaching freshwater end compartment; EP-marine = Eutrophication potential, fraction of nutrients reaching marine end compartment; EP-terrestrial = Eutrophication potential, Accumulated Exceedance; POCP = Formation potential of tropospheric ozone; ADP-minerals&metals = Abiotic depletion potential for non-fossil resources; ADP-fossil = Abiotic depletion for fossil resources potential; WDP = Water (user) deprivation potential, deprivation-weighted water consumption

Potential environmental impact – additional mandatory indicators according to EN 15804.

**Results per declared unit**

Indicator	Unit	Tot.A1-A3	A4	A5	C1	C2	C3	C4	D
Particulate matter	disease inc.	2,66E-07	1,33E-08	2,75E-10	0	7,26E-10	8,15E-11	1,39E-10	-1,92E-07
Ionising radiation <sup>1</sup>	kBq U-235 eq	2,02E-01	1,75E-02	5,31E-05	0	5,21E-04	7,43E-05	4,98E-05	-1,62E-01
Ecotoxicity, freshwater <sup>2</sup>	CTUe	5,41E+02	2,52E+00	5,62E-02	0	8,00E-02	1,27E-01	2,54E-02	-4,94E+02
Human toxicity, cancer <sup>2</sup>	CTUh	3,02E-08	1,48E-10	3,41E-12	0	3,19E-12	9,37E-12	1,75E-12	-2,81E-08
Human toxicity, non-cancer <sup>2</sup>	CTUh	8,33E-07	2,02E-09	5,02E-11	0	9,23E-11	8,77E-11	1,51E-11	-7,69E-07
Land use <sup>2</sup>	Pt	2,83E+01	1,20E+00	4,64E-03	0	8,62E-02	2,69E-03	1,47E-02	-2,45E+01

Disclaimer 1 – This impact category deals mainly with the eventual impact of low dose ionizing radiation on human health of the nuclear fuel cycle. It does not consider effects due to possible nuclear accidents, occupational exposure nor due to radioactive waste disposal in underground facilities. Potential ionizing radiation from the soil, from radon and from some construction materials is also not measured by this indicator.

Disclaimer 2 – The results of this environmental impact indicator shall be used with care as the uncertainties on these results are high or as there is limited experienced with the indicator.

## Climate impact IPCC 2013 GWP 100

**Results per declared unit**

Indicator	Unit	Tot.A1-A3	A4	A5	C1	C2	C3	C4	D
GWP-GHG	kg CO2 eq.	2,48E+00	2,75E-01	1,46E-02	0	6,51E-03	4,69E-02	5,75E-04	-1,59E+00

The indicator includes all greenhouse gases included in GWP-total but excludes biogenic carbon dioxide uptake and emissions and biogenic carbon stored in the product. This indicator is thus almost equal to the GWP indicator originally defined in EN 15804:2012+A1:2013.

## Use of resources

### Results per declared unit

Indicator	Unit	Tot.A1-A3	A4	A5	C1	C2	C3	C4	D
PERE	MJ	5,93E+00	3,41E-02	3,85E-04	0	1,45E-03	8,38E-04	2,88E-04	-4,96E+00
PERM	MJ	4,64E-01	0	0	0	0	0	0	0
PERT	MJ	6,39E+00	3,41E-02	3,85E-04	0	1,45E-03	8,38E-04	2,88E-04	-4,96E+00
PENRE	MJ	3,20E+01	3,96E+00	9,58E-03	0	1,07E-01	9,67E-03	1,14E-02	-2,04E+01
PENRM	MJ	0	0	0	0	0	0	0	0
PENRT	MJ	3,20E+01	3,96E+00	9,58E-03	0	1,07E-01	9,67E-03	1,14E-02	-2,04E+01
SM	kg	6,69E-01	0	0	0	0	0	0	0
RSF	MJ	0	0	0	0	0	0	0	0
NRSF	MJ	0	0	0	0	0	0	0	0
FW	m3	4,56E-02	4,44E-04	2,03E-05	0	1,87E-05	2,56E-05	9,45E-06	-4,01E-02

### Acronyms

PERE = Use of renewable primary energy excluding renewable primary energy resources used as raw materials; PERM = Use of renewable primary energy resources used as raw materials; PERT = Total use of renewable primary energy resources; PENRE = Use of non-renewable primary energy excluding non-renewable primary energy resources used as raw materials; PENRM = Use of non-renewable primary energy resources used as raw materials; PENRT = Total use of non-renewable primary energy resources; SM = Use of secondary material; RSF = Use of renewable secondary fuels; NRSF = Use of non-renewable secondary fuels; FW = Use of net fresh water



## Information on biogenic carbon content

### Results per functional or declared unit

BIOGENIC CARBON CONTENT	Unit	QUANTITY
Biogenic carbon content in product	kg C	0
Biogenic carbon content in packaging	kg C	9,41E-03

Note: 1 kg biogenic carbon is equivalent to 44/12 kg CO<sub>2</sub>.

## Additional information

Product name	Product number	Weight (kg)
LK PressPex Straight Fitting female, nickel plated	1876513	0,058
	1876514	0,065
	1876516	0,095
LK PressPex Straight Fitting male, nickel plated	1876506	0,053
	1876507	0,064
	1876508	0,073
	1876509	0,096
	1876511	0,137
	1876523	0,048
	1878433	0,128
LK PressPex Press Connection T-Piece, nickel plated	1880977	0,106
LK PressPex T-Piece female, nickel plated	1876573	0,108
	1876574	0,131
	1876575	0,177
	1876576	0,177
	1876577	0,202
	1876581	0,223
	1876582	0,234
	1878444	0,169
	1878445	0,212
LK PressPex T-Piece male, nickel plated	1876565	0,094
	1876566	0,116
	1876567	0,132

Product name	Product number	Weight (kg)
LK PressPex T-Piece male, nickel plated	1876568	0,158
	1876569	0,171
	1876570	0,199
	1876571	0,219
	1878446	0,158
LK PressPex Elbow Fitting 90° male, nickel plated	1878447	0,204
	1878453	0,053
LK PressPex Elbow Adapter Universal Pipe - CU, nickel plated	1878465	0,060
	1878466	0,074
	1882552	0,049
LK PressPex Radiator Connection M22, nickel plated	1878203	0,070
LK PressPex Press Connection, nickel plated	1876605	0,067
	1876608	0,059
	1878459	0,126
LK PressPex Straight Connection AX16xCU, chrome plated	1881062	0,061

### Additional information

Product name	Product number	Weight (kg)
LK PressPex Straight Fitting female	1872590	0,315
	1881538	0,683
	1872099	0,454
LK PressPex T-Piece	1872138	0,324
	1872141	0,342
	1872142	0,380
	1872144	0,415
	1872599	0,817
	1872615	0,601
	1872616	0,499
	1872617	0,613
	1872618	0,585
	1872619	0,687
	1872620	0,700
	1872621	0,720
	1874213	1,209
	1876590	0,304
	1876591	0,344
	1878004	0,327
	1878005	0,305
	1878009	0,825
	1878010	0,925
	1878011	0,947
	1878012	1,049
	1878013	1,003
	1878014	1,144
	1878439	0,440
	1878440	0,306
	1878442	0,555
	1878443	0,549
	1881540	1,739
	1878007	0,573
	1878008	0,824
	1878015	0,799
	1878441	0,520

Product name	Product number	Weight (kg)
LK PressPex Elbow Fitting 45°	1872071	0,310
	1872594	0,548
	1874208	0,804
LK PressPex Cap	1881544	1,150
	1872058	0,125
	1876602	0,068
	1876603	0,082
	1876604	0,109
	1878463	0,116
	1888512	0,064
	1872592	0,238
LK PressPex T-Piece female	1881541	1,123
	1881542	1,411
LK PressPex T-Piece male	1872622	0,653
	1878017	0,597
	1878018	0,880
LK PressPex Elbow Fitting 90°	1878019	0,942
	1872593	0,576
	1874210	0,895
	1881543	1,281
LK PressPex Press Connection T-Piece	1880977	0,106
LK PressPex Straight Adapter Universal Pipe - CU	1876600	0,046

## References

General Programme Instructions of the International EPD® System. Version 4.0.

PCR Construction Products. 2019:14, version 1.2.5, the International EPD System, Date 2022-11-01.

EN 15804:2012+A2:2019/AC:2021, "Sustainability of construction works - Environmental product declarations - Core rules for the product category of construction products"

EN ISO 14025:2010 Environmental labels and declarations - Type III environmental declarations - Principles and procedures, Edited in 2010

EN ISO 14040:2006 Environmental management - Life cycle assessment - Principles and framework, 2006.

EN ISO 14044:2006 Environmental management - Life cycle assessment - Requirements and guidelines, 2006.

PRé Consultants, "SimaPro 9.4.0.2" (PRé Consultants, 2019), <http://www.pre-sustainability.com/simapro>

Ecoinvent, 'Ecoinvent' <<https://www.ecoinvent.org/database/database.html>

Eriksson, E. et al., (2010) Carbon Footprint of Cartons in Europe – Carbon Footprint methodology and biogenic carbon sequestration, IVL. [Carbon footprint of cartons in Europe – Carbon Footprint methodology and biogenic carbon sequestration \(ivl.se\)](#)

EUTREND model, Struijs et al, 2009b, as implemented in ReCiPe; <http://epclca.jrc.ec.europa.eu/LCDN/developerEF.xhtml>

Material recycling <https://www.sgu.se> (2022-08-22) <https://www.sgu.se>  
([SGU – Stål- och metallindustriavfall](#) & [SGU – Metall- och mineralåtervinning](#))

Material recycling paper: Fråne, A. et al., (2021) *Sveriges återvinning av förpackningar och tidningar*, Naturvårdsverket.  
[https://www.naturvardsverket.se/contentassets/568ba7678ce94e25b99cfc1b02ad7e2a/forpackningsrapport\\_2020\\_211027.pdf](https://www.naturvardsverket.se/contentassets/568ba7678ce94e25b99cfc1b02ad7e2a/forpackningsrapport_2020_211027.pdf)