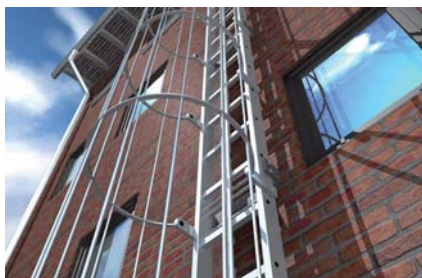


## The versatile injection mortar for anchorings in masonry and cracked concrete



Rescue ladders



Column bases

### BUILDING MATERIALS

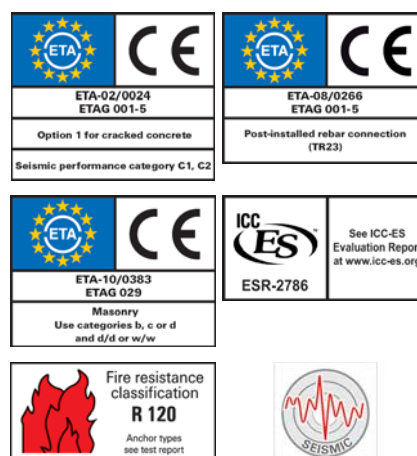
#### Approved for anchorings in:

- Concrete C20/25 to C50/60, cracked and non-cracked
- Hollow blocks made from lightweight concrete
- Hollow blocks made from concrete
- Vertically perforated brick
- Perforated sand-lime brick
- Solid sand-lime brick
- Aerated concrete
- Solid brick

#### Approved for:

- Rebar connections
- Remedial wall tie VBS 8
- Weather facing reconstruction system FWS II
- Stand-off installation Thermax

### CERTIFICATES



### ADVANTAGES

- The FIS V injection mortar has numerous system approvals, such as in cracked and non-cracked concrete, masonry and for special applications. FIS V is thus the universal injection mortar family with guaranteed reliability for practically all areas of application.
- FIS VW HIGH SPEED has a significantly shorter curing time than FIS V, thus also ensuring swift work progress even at low temperatures.
- FIS VS LOW SPEED with extended gelling time prevents premature curing of the mortar at higher temperatures and is ideally suited to large drill hole depths.
- The extensive range of accessories is ideally suited to the FIS V injection mortar family, increases the great flexibility of the system and thus allows for a broad range of applications.

### APPLICATIONS

#### Injection mortar for use with:

- Threaded rods FIS A, see page 146
- Internal threaded anchor RG MI, see page 159
- Rebar anchor FRA, see page 179
- Concrete steel bars, see page 185
- Injection anchor sleeves FIS H, see page 167
- Aerated concrete centring sleeve PBZ, see page PL
- Remedial wall tie VBS 8, see page 187
- Weather facing reconstruction system FWS II, see page 189
- Anchorings in waterfilled drill holes (only FIS V 410 C)

### FUNCTIONING

- The FIS V is a 2-component injection mortar based on vinyl ester hybrid.
- Resin and hardener are stored in two separate chambers and are not mixed and activated until extrusion through the static mixer.
- The injection cartridges are quick and easy to use with the fischer dispensers.
- Partially used cartridges can be reused, simply by changing the static mixer.

### SEE ALSO



**ANCHORS + SLEEVES**

Page 144



**DISPENSER**

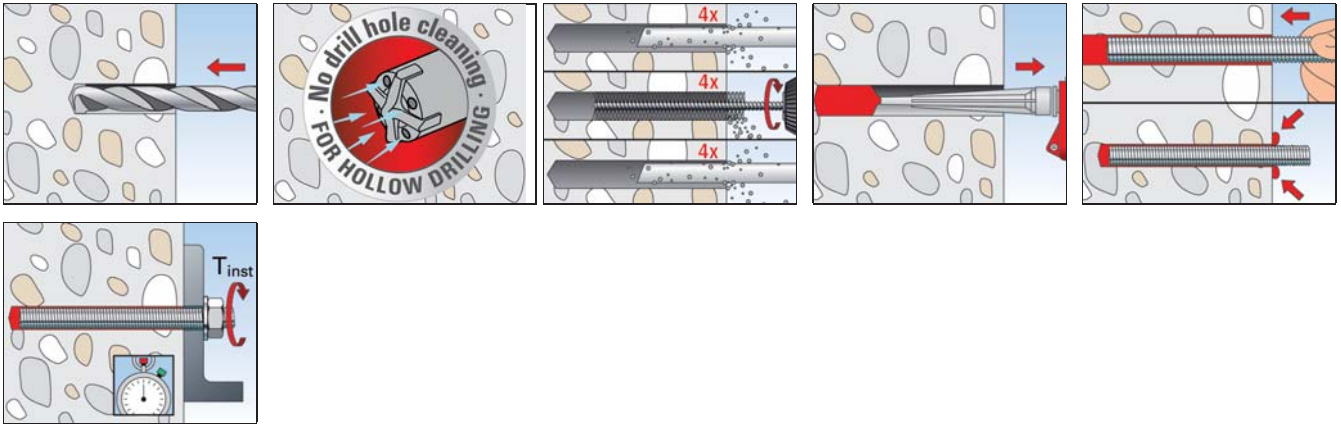
Page 195



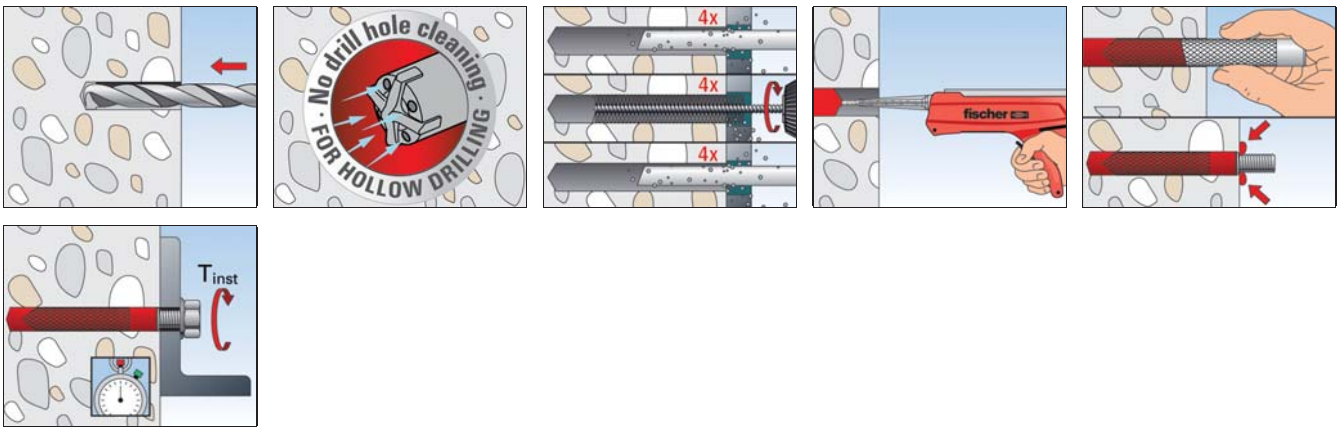
**ACCESSORIES**

Page 198

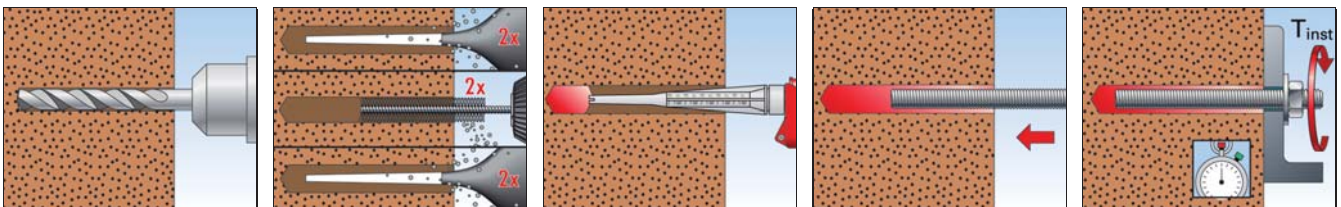
**INSTALLATION IN CONCRETE WITH FIS V AND FIS A / RG M**



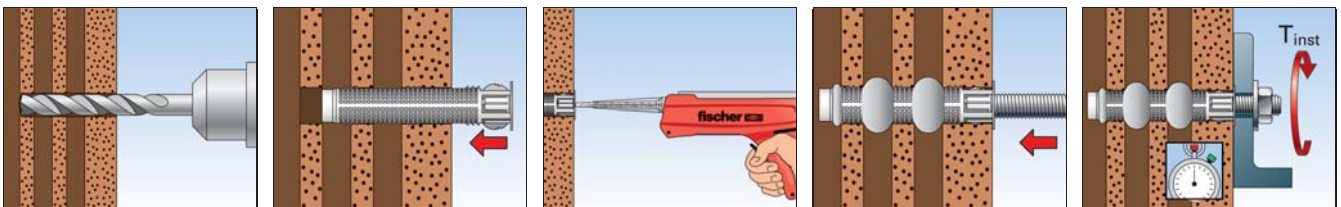
**INSTALLATION IN CONCRETE WITH FIS V AND RG M I**



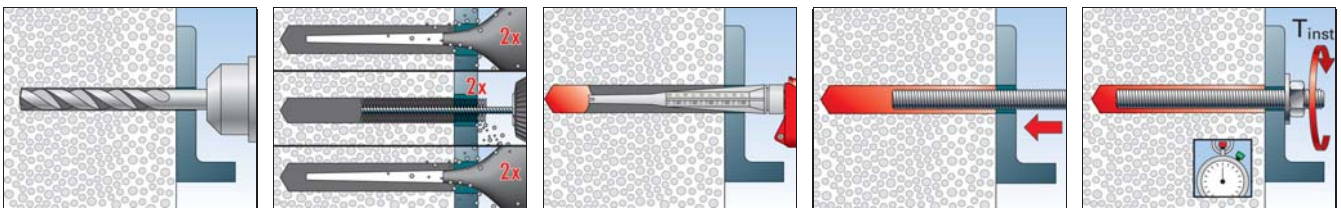
**INSTALLATION IN SOLID BRICK WITH FIS V AND FIS A**



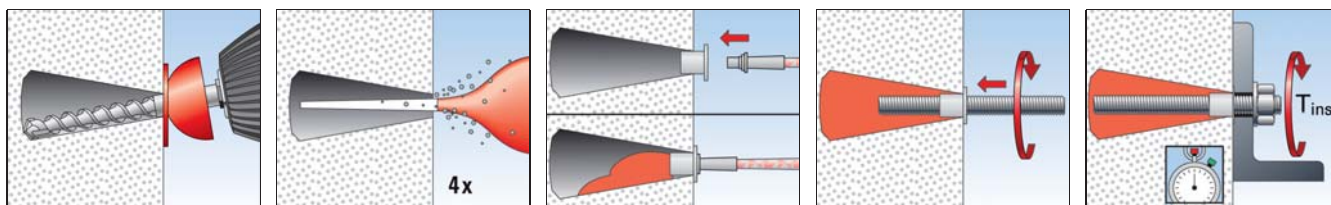
**INSTALLATION IN HOLLOW BLOCKS WITH FIS V AND FIS HK + FIS A**



**INSTALLATION IN AERATED CONCRETE WITH FIS V AND FIS A / RG M**



## INSTALLATION IN UNDERCUT DRILL HOLE IN AERATED CONCRETE WITH FIS V AND FIS A / RG M



### TECHNICAL DATA



Injection mortar **FIS V 300 T**



Injection mortar **FIS V 360 S**



Injection mortar **FIS V 410 C**



Static mixer **FIS MR Plus**

Item	Art.-No.	Approval			Languages on the cartridge	Scale unit	Contents	Sales unit
		DIBt	ETA	ICC				
<b>FIS V 300 T</b>	<b>531573</b>	●	■	▲	USA, RA, BR, MEX	150	1 cartridge 300 ml, 2 x FIS MR Plus	12
<b>FIS V 360 S</b>	<b>094404</b>	●	■	▲	DE, FR, NL, TR, HU, AR	180	1 cartridge 360 ml, 2 x FIS MR Plus	6
<b>FIS V 360 S</b>	<b>094405</b>	●	■	▲	EN, IT, PT, ES, ZH, JA	180	1 cartridge 360 ml, 2 x FIS MR Plus	6
<b>FIS V 360 S</b>	<b>068435</b>	●	■	▲	DA, SV, NO, FI, PL, EL	180	1 cartridge 360 ml, 2 x FIS MR Plus	6
<b>FIS V 360 S</b>	<b>502283</b>	●	■	▲	LT, LV, ET, UK, RU, KK	180	1 cartridge 360 ml, 2 x FIS MR Plus	6
<b>FIS V 360 S</b>	<b>043994</b>	●	■	▲	CS, SK, PL, HU, RO, RU	180	1 cartridge 360 ml, 2 x FIS MR Plus	6
<b>FIS V 410 C</b>	<b>521431</b>	●	■	▲	IT, EN, DE	200	1 cartridge 410 ml, 2 x FIS MR Plus	16
<b>FIS V 410 C</b>	<b>534880</b>	●	■	▲	PL, LT, LV, ET, RU	200	1 cartridge 410 ml, 2 x FIS MR Plus	12
<b>FIS V 410 C</b>	<b>538131</b>	●	■	▲	USA, RA, BR, MEX	200	1 cartridge 410 ml, 2 x FIS MR Plus	12
<b>FIS MR Plus</b>	<b>545853</b>	—	—	—	—	—	10 static mixer FIS MR Plus	10

### TECHNICAL DATA



Injection mortar **FIS VW 300 T**



Injection mortar **FIS VW 360 S**



Injection mortar **FIS VW 380 C**



Static mixer **FIS MR Plus**

Item	Art.-No.	Approval		Languages on the cartridge	Scale unit	Contents	Sales unit
		DIBt	ETA				
<b>FIS VW 300 T</b>	<b>507793</b>	●	■	DE, EN, HR, SL, SR, BG	150	1 cartridge 300 ml, 2 x FIS MR Plus	12
<b>FIS VW 300 T</b>	<b>507795</b>	●	■	SV, DA, NO, CS, SK, PL, RU	150	1 cartridge 360 ml, 2 x FIS MR Plus	12
<b>FIS VW 360 S</b>	<b>090753</b>	●	■	DE, EN, FR, IT, NL, ES	180	1 cartridge 360 ml, 2 x FIS MR Plus	6
<b>FIS VW 360 S</b>	<b>043997</b>	●	■	CS, SK, PL, HU, RO, RU	180	1 cartridge 360 ml, 2 x FIS MR Plus	6
<b>FIS VW 360 S</b>	<b>502284</b>	●	■	RU, LT, LV, ET, UK, KK	180	1 cartridge 360 ml, 2 x FIS MR Plus	6
<b>FIS VW 380 C</b>	<b>519328</b>	●	■	CS, SK, PL	190	1 cartridge 380 ml, 2 x FIS MR Plus	12
<b>FIS MR Plus</b>	<b>545853</b>	—	—	—	—	10 static mixer FIS MR Plus	10

## TECHNICAL DATA



Injection mortar  
**FIS VS 100 P**



Injection mortar  
**FIS VS 150 C**



Injection mortar  
**FIS VS 300 T**



Injection mortar  
**FIS VS 360 S**



Static mixer **FIS MR Plus**

Item	Art.-No.	Approval			Languages on the cartridge	Scale unit	Contents	Sales unit
		DIBt	ETA	ICC				
<b>FIS VS 100 P</b>	<b>072525</b>	●	■	▲	DE, EN, FR, IT, NL, ES	50	1 cartridge 100 ml, 2 x FIS MR Plus	6
<b>FIS VS 150 C</b>	<b>045302</b>	●	■	▲	DE, EN, FR, IT, NL, ES	70	1 cartridge 145 ml, 1 x FIS MR Plus	6
<b>FIS VS 150 C Set</b>	<b>045303</b>	●	■	▲	DE, EN, FR, IT, NL, ES	70	Set for hollow bricks: 1 cartridge 145 ml, 2 x FIS MR Plus, 6 x FIS H 16 x 85 K	6
<b>FIS VS 300 T</b>	<b>093180</b>	●	■	▲	DE, EN, FR, NL, ES, PT	150	1 cartridge 300 ml, 1 x FIS MR Plus	12
<b>FIS VS 300 T</b>	<b>502285</b>	●	■	▲	RU, LT, LV, ET, UK, KK	150	1 cartridge 300 ml, 1 x FIS MR Plus	12
<b>FIS VS 300 T</b>	<b>044102</b>	●	■	▲	CS, SK, PL, HU, RO, RU, EL	150	1 cartridge 300 ml, 1 x FIS MR Plus	12
<b>FIS VS 300 T</b>	<b>093226</b>	●	■	▲	PL, CS, DA, NO, SV, FI	150	1 cartridge 300 ml, 1 x FIS MR Plus	12
<b>FIS VS 360 S</b>	<b>078664</b>	●	■	▲	EN, ZH, ES, PT, JA	180	1 cartridge 360 ml, 2 x FIS MR Plus	6
<b>FIS MR Plus</b>	<b>545853</b>	—	—	—	—	—	10 static mixer FIS MR Plus	10



**FIS V 360 S HWK small**



**FIS V 360 S HWK big**



**FIS V 360 S HWK big with dispenser FIS DM S**

Item	Art.-No.	Approval			Languages on the cartridge	Contents	Sales unit
		DIBt	ETA	ICC			
<b>FIS V 360 S HWK small</b>	<b>092430</b>	●	■	▲	DE, FR, NL, TR, HU, AR	10 cartridges 360 ml, 20 x FIS MR Plus	1
<b>FIS V 360 S HWK big</b>	<b>091936</b>	●	■	▲	DE, FR, NL, TR, HU, AR	20 cartridges 360 ml, 40 x FIS MR Plus	1
<b>FIS V 360 S HWK big</b>	<b>096554</b>	●	■	▲	EN, IT, PT, ES, ZH, JA	20 cartridges 360 ml, 40 x FIS MR Plus	1
<b>FIS V 360 S HWK big</b>	<b>503027</b>	●	■	▲	CS, SK, PL, HU, RO, RU	12 cartridges 360 ml, 24 x FIS MR Plus, 1 x dispenser FIS DM S	1