

COREtec®
FLOORS

A *stair* is born



EN

IT - SP - PT



FROM ONE TRUE ORIGINAL TO ANOTHER, IT'S A FAMILY AFFAIR!

What's in your *core*?

The real values in life are those created and found within families; authenticity, trust and the opportunity given to be creative and express yourself. These same values drive our company and they define our corporate culture.

We saw an opportunity to create a better floor. We chased a dream and created a whole new category along the way. As the innovators of COREtec®, the Original, 100% waterproof floor, we did just that. Stylish, strong floors that sustain real family lives full of entertaining, kids and pets.

Click, lock, enjoy. It is as simple as that!

It all began as an entrepreneurial business in 2001, within our founder's heart and spare bedroom as our "headquarters". With the invention of COREtec®, the original, patented, 100% waterproof floor in 2013, we grew rapidly to become the leading brand of these unique and highly innovative products.

We launched our European division in 2016 and that same year were acquired and embraced into the family of Shaw Floors, an industry leader and subsidiary of Berkshire Hathaway, led by the world-renowned investor, Warren Buffett.

We've come a long way from where we started to where we are now. But those family values guide us still. Led by management and embraced by every employee, dealer, and partner, we are recognized as the problem-solvers, innovators and design enthusiasts. Today we offer an incredible range of resilient, durable floors that can be purchased, installed and lived upon in one single day. Click, lock, enjoy. It is as simple as that!

The most difficult task will be to choose from our wide variety of life-like decors. But don't worry, you are sure to find one to match your style because we have a floor for every personality.

**WELCOME TO OUR FAMILY,
WE PROMISE TO REMAIN AUTHENTIC TO THE CORE**

4

Make your stairs
the *star* of the show,
in just one day!

Could your stairs use a new look? Or maybe you're ready for a total transformation?

Spruce up your staircase in a day with COREtec® Stairs!



Quick and easy

Installed in one day by craftsmen



Acoustic damping

Integrated cork underlay



Safe

Thanks to the COREtec® non-slip coating



Lighting

Optional built-in LED lighting



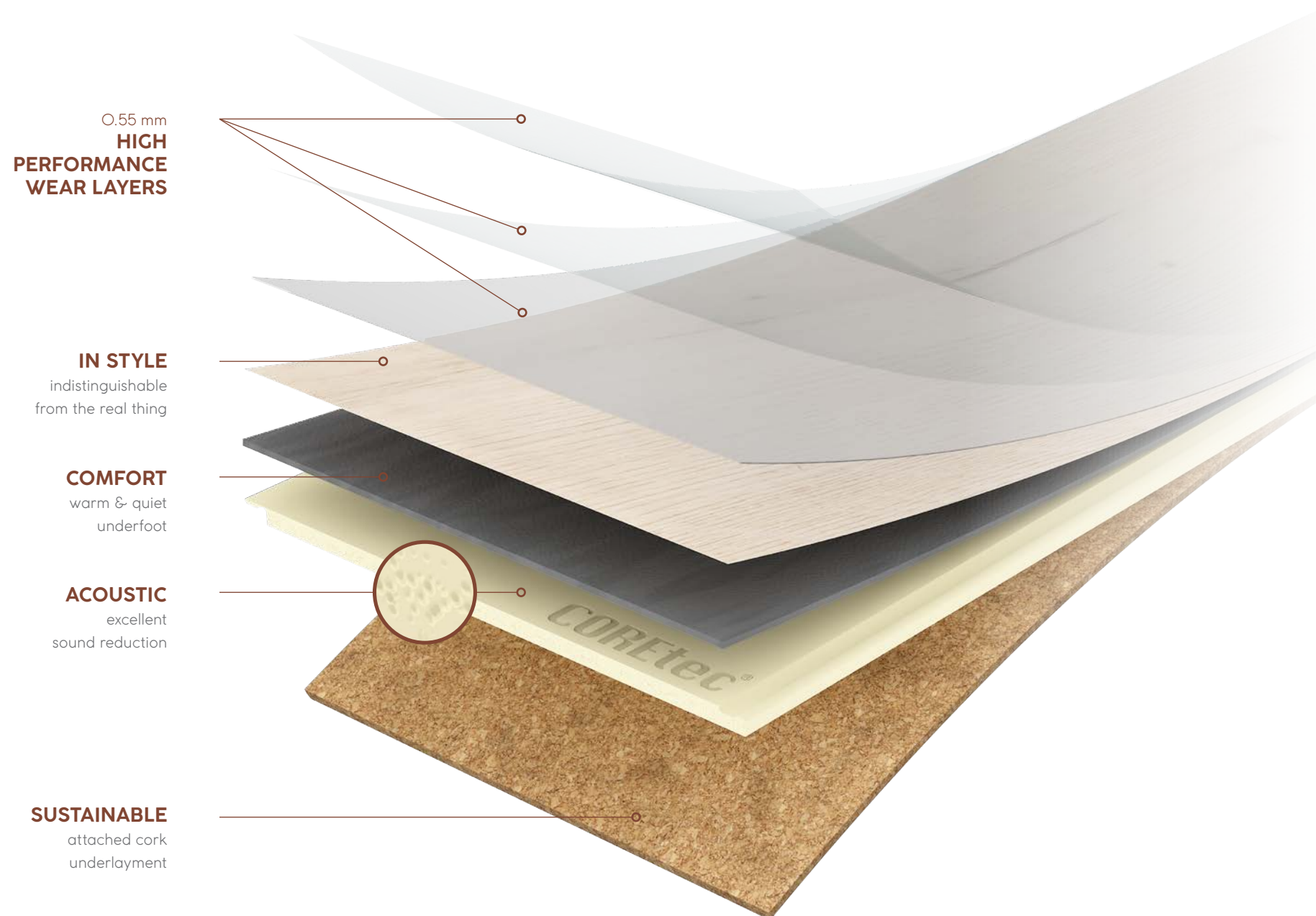
Finishing touch & maintenance

Matching flooring, skirtings, accessories
& cleaning set available



Your staircase & floors

COREtec® Stairs and our unique Soundcore® technology offer the perfect solution to match your stairs and your COREtec® floor.



A staircase with all the benefits !

Thanks to our special non-slip coating, our stairs are safe and ready to withstand anything family life can throw at them!

Plus all the other benefits of COREtec®:



100% waterproof



Extremely stable



No acclimatisation necessary



Installation on any surface



Reduces noise



Pet proof



Electrostatic performance

Choose the *staircase* design that suits you

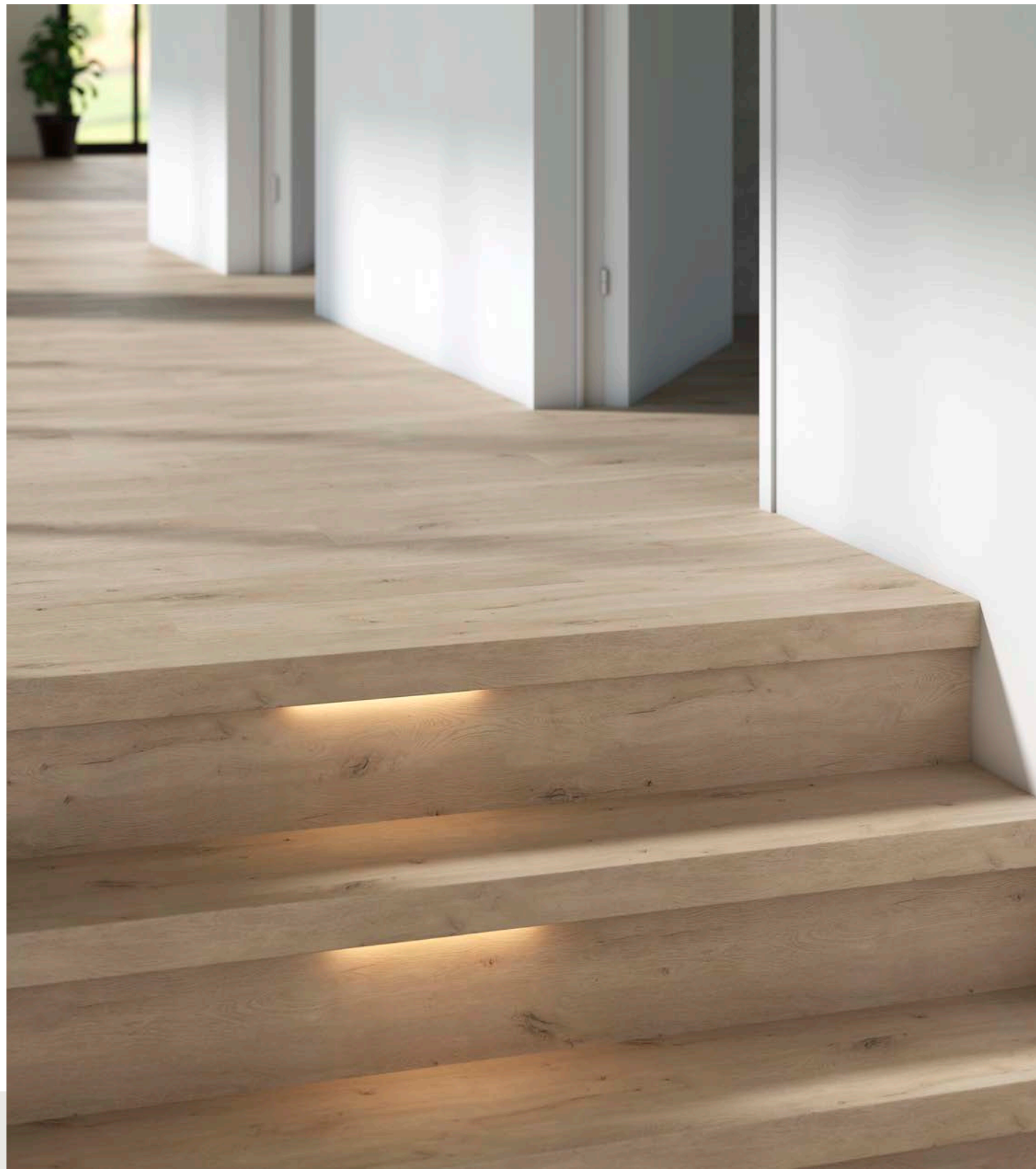
A gorgeous new staircase in the style of your dreams? COREtec® Stairs will exceed your expectations.



MEADOW

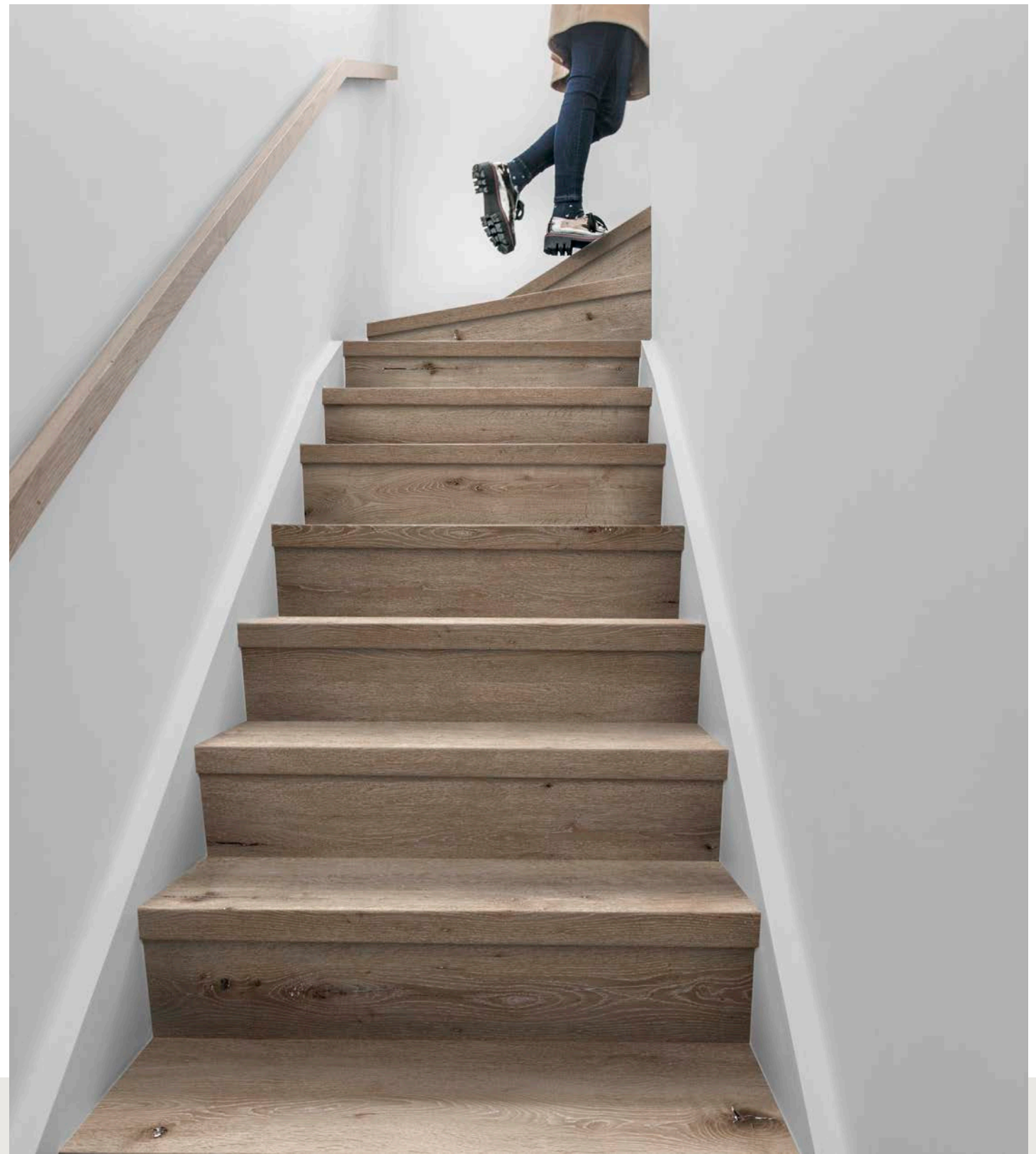
i See order details p. 18-19





FOREST

i See order details p. 18-19



ACORN

See order details p. 18-19 **i**



LUMBER

i See order details p. 18-19



MATTERHORN

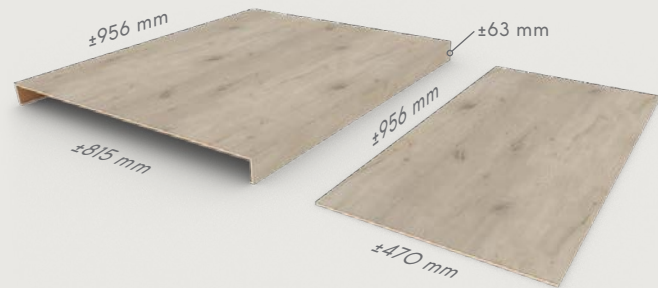
See order details p. 18-19 **i**

A custom solution for any *staircase*

Essential

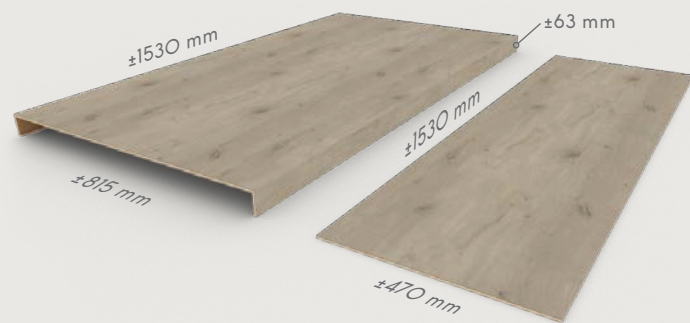
A. Straight treads

This package includes 2 treads and a riser for a straight staircase.



B. Winding (curved) treads

This package includes 2 treads and a riser for a winding or curved section of stairs.



C. Landing tread

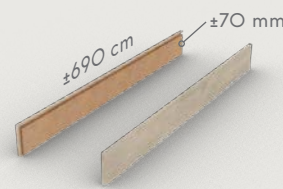
This package includes a single landing tread and a riser in the chosen style. The landing tread ensures that the top tread blends perfectly with your existing COREtec® floor.



Optional

D. Covering caps

This package includes two covering caps (left and right) for open tread stairs.



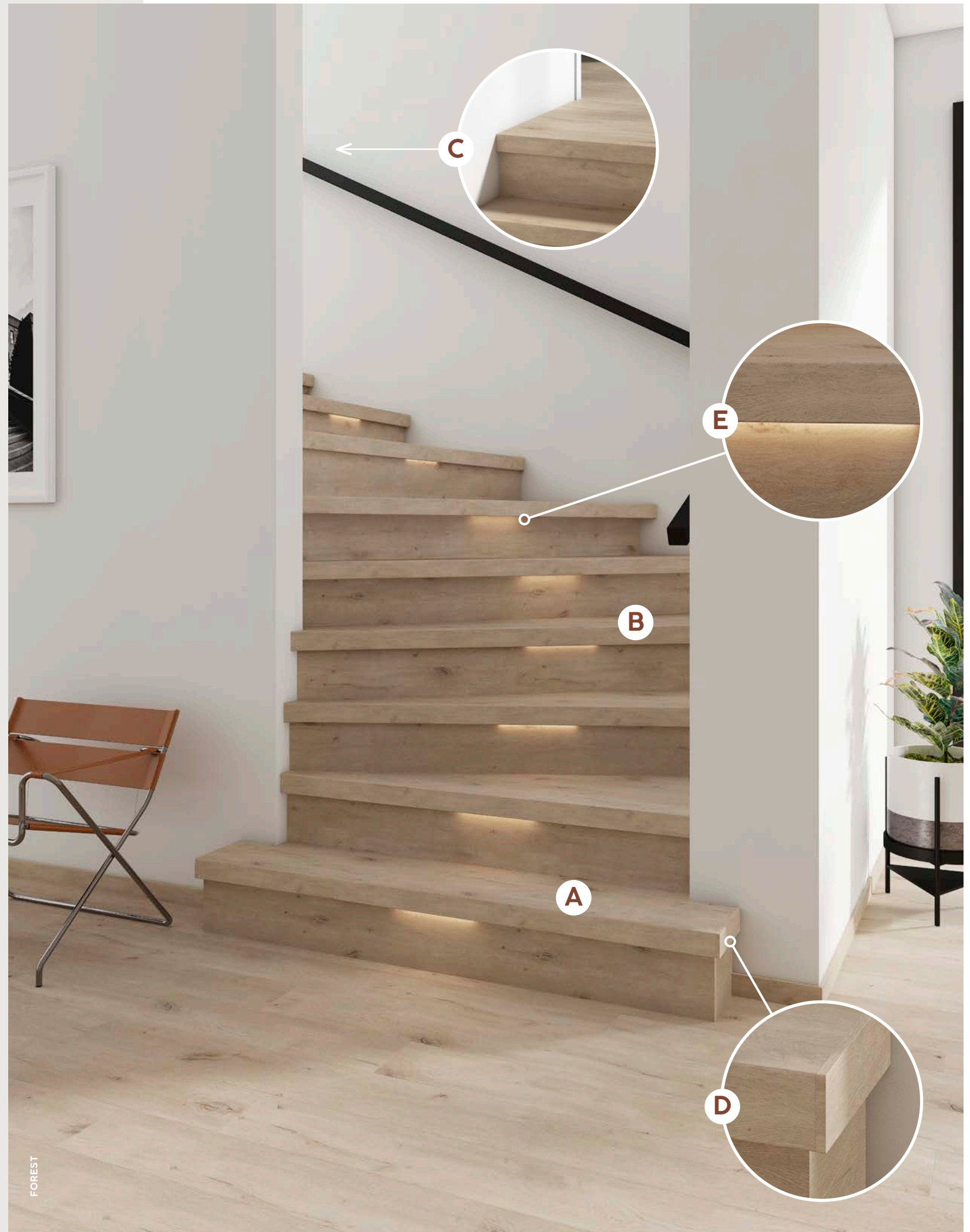
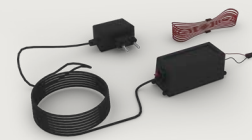
E. Lighting

This package includes a bottom rail with built-in LED lighting.



F. Adapter set

This package contains the complete set of electrical equipment including the transformer and the necessary connectors.



Technical specifications

LEVEL OF USE

Classe d'uso / Clasificación de uso /
Classe de utilização
23 / 33 / 41 (EN ISO 10874)

GEOMETRICAL CHARACTERISTICS

Fantasia geometriche / Características geométricas /
Características geométricas
Conform (ISO 24337)

WEAR RESISTANCE

Resistenza all'usura / Resistencia al desgaste /
Resistência ao desgaste
Pass 4000 cycles (EN 13329 Annex E)

CASTOR CHAIR RESISTANCE

Resistenza alle sedie con ruote / Resistencia a sillas
con ruedas / Resistência a cadeira de rodas
Pass 25000 cycles (EN 425)

EFFECT OF FURNITURE LEG

Effeto furniture leg / Efecto de la pata de un mueble /
Efeito da perna do móvel
No visible change (EN 16581)

RESIDUAL INDENTATION

Indentazione residua certificata / Huella residual /
Recuo residual
≤ 0.15 mm (EN ISO 24343-1)

RESISTANCE TO STAINING

Resistenza alle macchie / Resistencia al manchado /
Resistência a manchas
5 (no visible change) (EN 438-2)

LOCKING STRENGTH

Chiusura perfetta con sistema a click / Resistencia a
la tracción / Força de encaixe
LS ≥ 2.0 / SS ≥ 3.5 (EN 24334)

DIMENSIONAL STABILITY

Stabilità dimensionale / Estabilidad dimensional /
Estabilidade dimensional
Pass ≤ 0.25% (EN ISO 23999)

COLOUR FASTNESS TO LIGHT

Resistencia alla luce / Solidez del color a luz artificial /
Resistência da cor à luz
> grade 6 (ISO 105-BO2)

IMPACT SOUND REDUCTION

Isolamento acustico / Aislamiento acústico /
Isolamento acústico
 $\Delta L_w = 20$ dB (ISO 10140-3 / EN 717-2)
 $\Delta L_{L_{IN}} = 10$ dB (ISO 10140-3 / EN 717-1)

FORMALDEHYDE EMISSION CLASS

Classe Formaldeide / Emisión formaldehído /
Classificação formaldeído
E1 (EN 717-1)

FIRE CLASSIFICATION

Classe di resistenza al fuoco / Resistencia al fuego /
Classificação de Fogo
Bfl - S1 (EN 13501)

SLIP RESISTANCE

Coefficiente dinamico di attrito / Coeficiente de
fricción / Coeficiente de atrito
DS - RIO (EN 13893 - DIN 51130)

UNDERFLOOR HEATING

Riscaldamento a pavimento / Calefacción por suelo
radiante / Aquecimento por piso radiante
Suitable

ELECTROSTATIC PERFORMANCE

Performance elettrostatica / Rendimiento antiestático /
Acumulação de cargas eletrostáticas
≤ 2 kV (EN 1815)

THERMAL RESISTANCE

Resistenza al calore / Aislamiento térmico /
Isolamento térmico
0.066 m²-K/W (EN 12667)

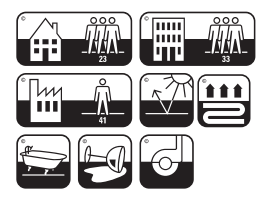
Maintenance

The COREtec® Clean, quick & green kit:

- Daily cleaner
- Deep cleaner
- Stain remover



COREtec®, the natural choice



Warranty (Years) The warranty covers manufacturing defects and premature wear in the event of normal use.

What comes in which *package?*

Essential

Box A. Straight treads

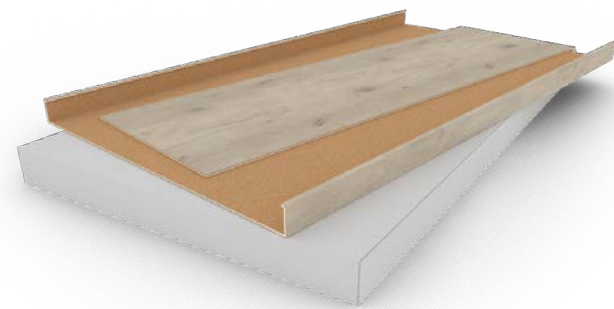
2 treads + 2 risers



Available in:
Forest (75STRO8O6A)
Acorn (75STRO854A)
Meadow (75STRO8O7A)
Lumber (75STRO8O4A)
Matterhorn (75STRO19O5A)

Box B. Winding (curved) treads

2 winding (curved) treads + 2 risers



Available in:
Forest (75STRO8O6B)
Acorn (75STRO854B)
Meadow (75STRO8O7B)
Lumber (75STRO8O4B)
Matterhorn (75STRO19O5B)

Box C. Landing tread

1 landing tread + 1 riser



Available in:
Forest (75STRO8O6C)
Acorn (75STRO854C)
Meadow (75STRO8O7C)
Lumber (75STRO8O4C)
Matterhorn (75STRO19O5C)

Optional

Box D. Covering caps

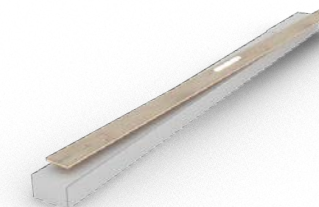
1 left covering cap + 1 right covering cap



Available in:
Forest (75STRO8O6D)
Acorn (75STRO854D)
Meadow (75STRO8O7D)
Lumber (75STRO8O4D)
Matterhorn (75STRO19O5D)

Box E. Bottom rail with built-in lighting

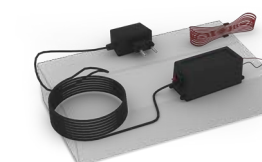
1 bottom rail with built-in LED lighting



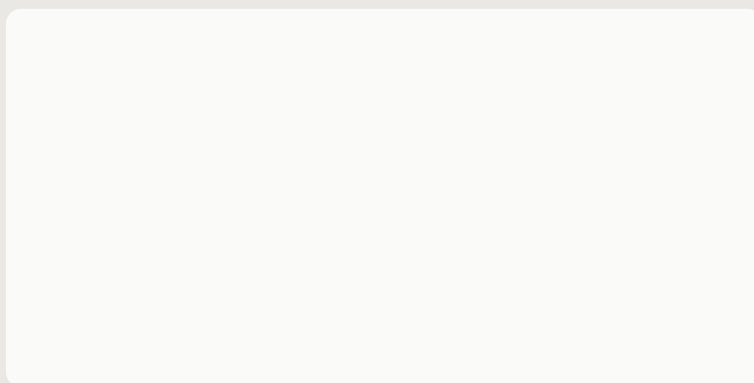
Available in:
Forest (75STRO8O6E)
Acorn (75STRO854E)
Meadow (75STRO8O7E)
Lumber (75STRO8O4E)
Matterhorn (75STRO19O5E)

Box F. Adapter Kit

1 set required for each staircase



Available in:
Universal (75STROOOOF)



Souverainestraat 27 - 9770 Kruisem (Belgium)
info@usfloors.be · www.coretecfloors.com