

Sikacryl 621 Fire+

YTELSESERKLÆRING

No. 79744211

1	PRODUKTYPENS ENTYDIGE IDENTIFIKASJONSKODE:	79744211
2	TILSIKTET BRUKSOMRÅDE :	EAD 350141-00-1106:2017 Fire Stopping and Sealing Product: Linear Joint and Gap Seals
3	FABRIKANT:	Sika Services AG Tüffenwies 16-22 8064 Zürich
4	OPPNEVNT REPRESENTANT:	
5	SYSTEM FOR VURDERING OG KONTROLL AV YTEEVNE:	System 1
6b	EUROPEISK BEDØMMELSES DOKUMENT:	EAD 350141-00-1106:2017
	Europeisk Teknisk Bedømmelse:	ETA-21/0889 of 2021/10/20
	Teknisk bedømmelsesorgan:	DBI Certification A/S
	Teknisk kontrollorgan (hEN) / vurderingsorgan (ETA)::	2531

Ytelseserklæring

Sikacryl 621 Fire+

79744211

2021.10 , ver. 1

1549

1/34

7 ANGITT YTELSE

Essential Characteristics	Performance	AVCP	Harmonised Technical Specification
Reaction to fire	D – s1, d1	System 1	EAD 350141-00- 1106:2017
Resistance to fire	Annex A	System 1	
Content, emission and/or release of dangerous substances	No performance assessed	System 1	
Water permeability	No performance assessed	System 1	
Release of dangerous substances	No performance assessed	System 1	
Mechanical resistance and stability	No performance assessed	System 1	
Resistance to impact/movement	No performance assessed	System 1	
Adhesion	No performance assessed	System 1	
Durability	Z2	System 1	
Movement capacity	No performance assessed		
Cycling of perimeter seals for curtain walls	No performance assessed		
Compression set	No performance assessed		
Linear expansion on setting	No performance assessed		
Airborne sound insulation	Rw(C;Ctr)= 62 (-1;-5) dB*	System 1	
Thermal properties	No performance assessed	System 1	
Water vapour permeability	No performance assessed	System 1	

* At 12 mm depth

A.1 Flexible wall constructions according to 2 1) with wall thickness of minimum 75 mm and minimum 1 x layer of 12.5 mm board per side

A.1.1 Linear joint seals, between head of flexible wall and soffit of concrete floor and vertical end of flexible wall and concrete wall

Joint Seal: Sikacryl-621 Fire+ to both sides of the wall, joint widths up to 30 mm

Construction details:	
-----------------------	--

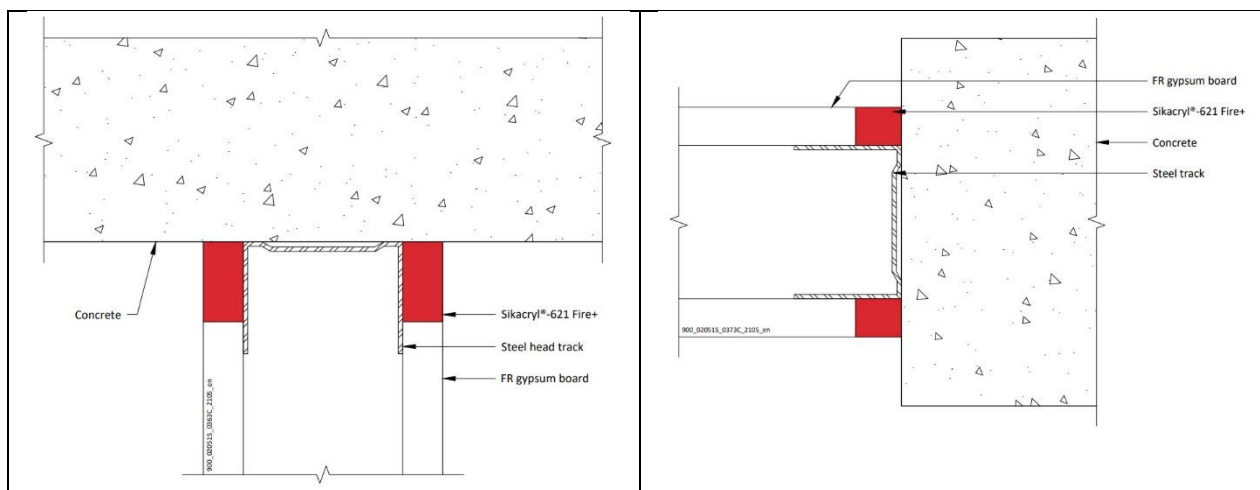
Ytelseserklæring
Sikacryl 621 Fire+

79744211
2021.10 , ver. 1
1549

FOR NÆRMERE INFORMASJON:

Sika Norge AS
Sanitetsveien 1,
NO-2013 SKJETTEN, Norge

tlf. +47 67 06 79 00
www.sika.no



A.1.1.1

Substrate	Depth (mm)	Backing (minimum)	Classification
Plasterboard/ concrete	12.5 min.	50 mm steel partition head track/ stud	E 60 – T – X – F – W 25 EI 45 – T – X – F – W 25
			E 60 – V – X – F – W 15 EI 45 – V – X – F – W 15

Ytelseserklæring
Sikacryl 621 Fire+

79744211
2021.10 , ver. 1
1549

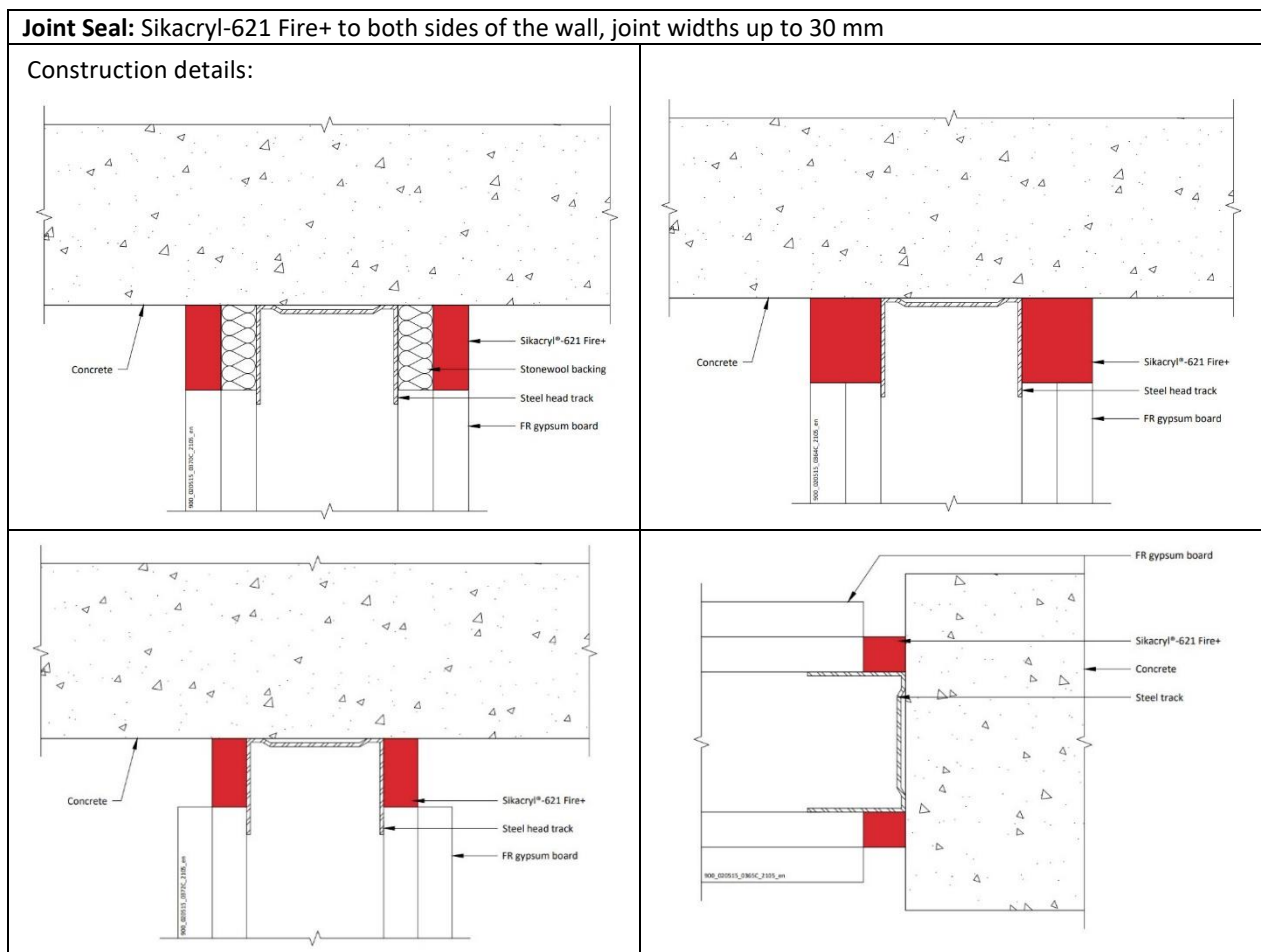
FOR NÆRMERE INFORMASJON:

Sika Norge AS
Sanitetsveien 1,
NO-2013 SKJETTEN, Norge

tlf. +47 67 06 79 00
www.sika.no

A.2 Flexible wall constructions according to 1.2.1 with wall thickness of minimum 100 mm and minimum 2 x layer of 12.5 mm board per side

A.2.1 Linear joint seals, between head of flexible wall and soffit of concrete floor and vertical end of flexible wall and concrete wall



A.2.1.1

Substrate	Depth (mm)	Backing (minimum)	Classification
Plasterboard/ concrete	12.5 min.	12.5 mm Stone wool 35 kg/m ³ plus 50 mm steel partition head track	EI 120 – T – X – F – W 30

Ytelseserklæring
Sikacryl 621 Fire+

79744211
2021.10 , ver. 1
1549

**FOR NÆRMERE
INFORMASJON:**

Sika Norge AS
Sanitetsveien 1,
NO-2013 SKJETTEN, Norge

tlf. +47 67 06 79 00
www.sika.no

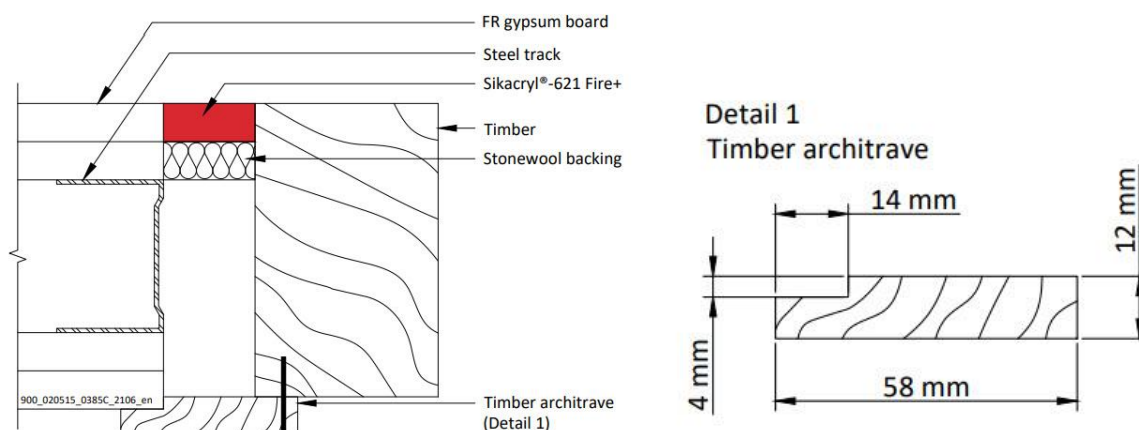
		20 mm Stone wool 35 kg/m ³	EI 120 – V – X – F – W 30
	25 min.	50 mm steel partition head track /stud	EI 120 – T – X – F – W 30
	12.5 min.		EI 90 – T – X – F – W 25
			EI 90 – V – X – F – W 15

A.2.2 Flexible or rigid wall construction with wall thickness of minimum 100 mm and timber substrates and architraves

A.2.2.1 Linear joint or gap seals, vertically or horizontal orientated with backing materials

Joint Seal: Sikacryl-621 Fire+ to one side of the wall, joint widths up to 30 mm

Construction details:



A.2.2.2

Substrate	Depth (mm)	Facing (minimum)	Backing	Classification
Flexible or rigid wall / Timber	12.5 min.	Single sided linear seals in flexible or rigid walls against wooden frames covered with architraves on the other side fixed with 25 mm steel pins at nominal 300 mm centres.	Stonewool, 12.5 mm deep min. 35 kg/m ³	EI 60 – V – X – F – W 30
				EI 60 – T – X – F – W 30

Ytelseserklæring
Sikacryl 621 Fire+

79744211
2021.10 , ver. 1
1549

FOR NÆRMERE INFORMASJON:

Sika Norge AS
Sanitetsveien 1,
NO-2013 SKJETTEN, Norge

tlf. +47 67 06 79 00
www.sika.no

Ytelseserklæring
Sikacryl 621 Fire+

79744211
2021.10 , ver. 1
1549

**FOR NÆRMERE
INFORMASJON:**

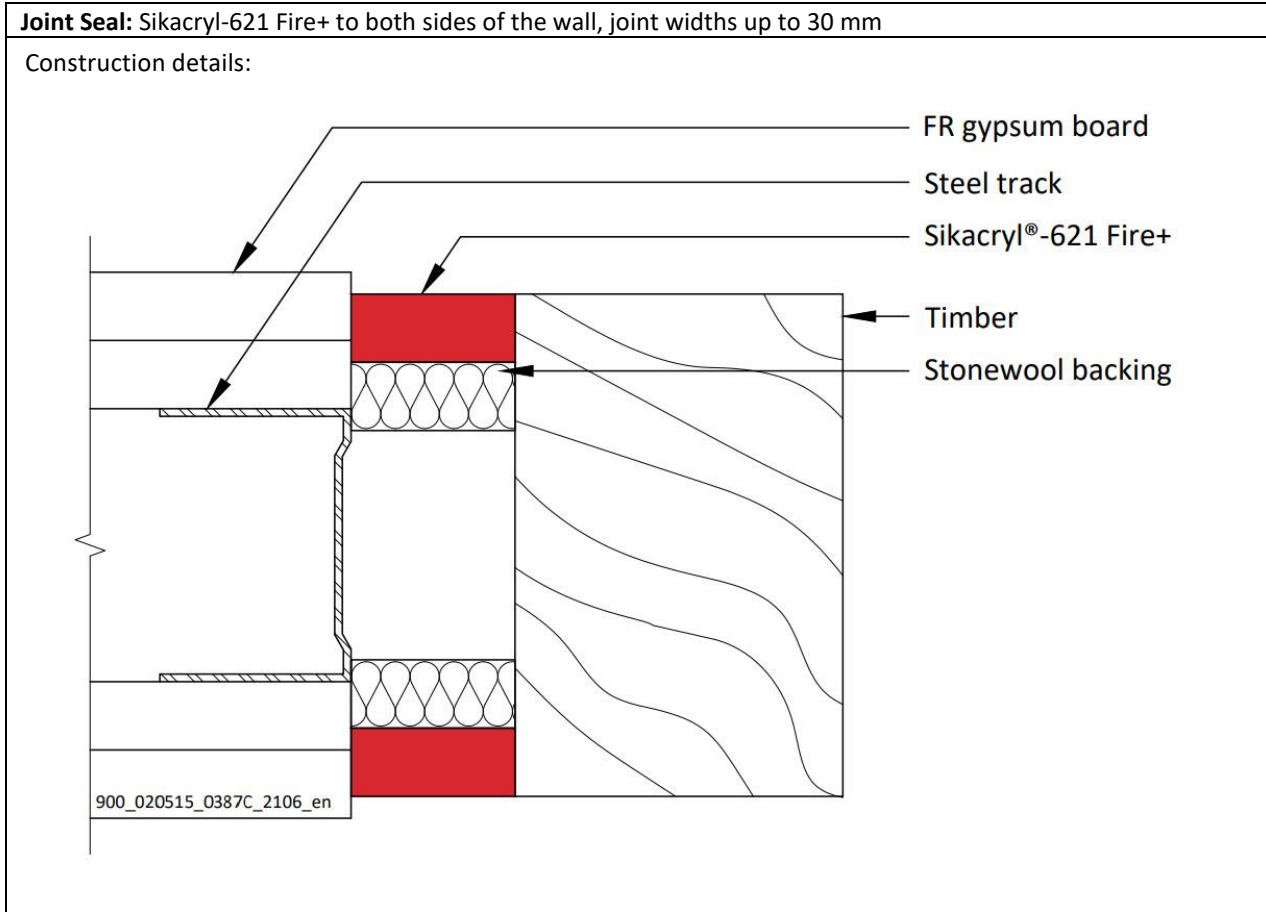
Sika Norge AS
Sanitetsveien 1,
NO-2013 SKJETTEN, Norge

tlf. +47 67 06 79 00
www.sika.no

6/34

A.2.3 Flexible or rigid wall construction with wall thickness of minimum 100 mm and timber substrates

A.2.3.1 Linear joint or gap seals, vertically or horizontal orientated with backing materials



A.2.3.2

Substrate	Depth (mm)	Backing	Classification
Flexible or rigid wall / Timber	12.5 min.	Stonewool, 12.5 mm deep min. 35 kg/m ³	E 90 – V – X – F – W 30
			EI 60 – V – X – F – W 30
			E 90 – T – X – F – W 30
			EI 60 – T – X – F – W 30

Ytelseserklæring
Sikacryl 621 Fire+

79744211
2021.10, ver. 1
1549

**FOR NÆRMERE
INFORMASJON:**

Sika Norge AS
Sanitetsveien 1,
NO-2013 SKJETTEN, Norge

tlf. +47 67 06 79 00
www.sika.no

Ytelseserklæring
Sikacryl 621 Fire+

79744211
2021.10 , ver. 1
1549

**FOR NÆRMERE
INFORMASJON:**

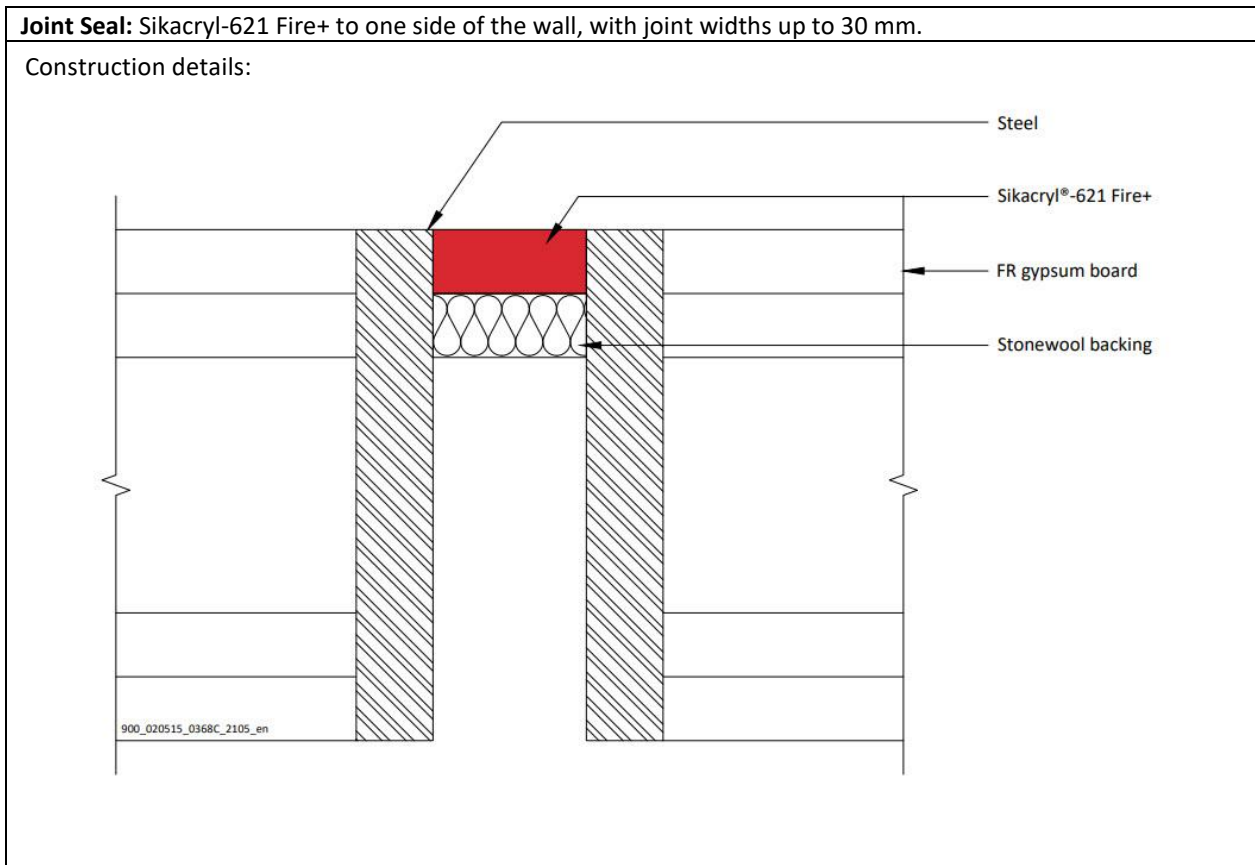
Sika Norge AS
Sanitetsveien 1,
NO-2013 SKJETTEN, Norge

tlf. +47 67 06 79 00
www.sika.no

8/34

A.2.4 Flexible or rigid wall construction with wall thickness of minimum 100 mm and steel substrates

A.2.4.1 Linear joint or gap seals, vertically or horizontal orientated with backing materials



A.2.4.2

Substrate	Depth (mm)	Backing	Classification
Steel / steel	12.5 min.	Stonewool, 12.5 mm deep min. 35 kg/m ³	E 120 – V – X – F – W 30
			EI 30 – V – X – F – W 30
			E 120 – T – X – F – W 30
			EI 30 – T – X – F – W 30

Ytelseserklæring
Sikacryl 621 Fire+

79744211
2021.10 , ver. 1
1549

FOR NÆRMERE INFORMASJON:

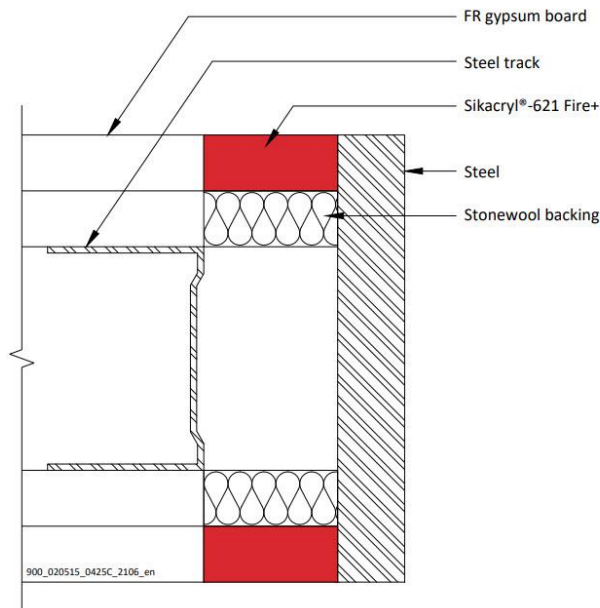
Sika Norge AS
Sanitetsveien 1,
NO-2013 SKJETTEN, Norge

tlf. +47 67 06 79 00
www.sika.no

A.2.5 Linear joint or gap seals, vertically or horizontal orientated with backing materials

Joint Seal: Sikacryl-621 Fire+ to both sides of the wall, with joint widths up to 30 mm.

Construction details:



A.2.5.1

Substrate	Depth (mm)	Backing	Classification
Flexible or rigid wall / Steel	12.5 min.	Stonewool, 12.5 mm deep min. 35 kg/m ³	E 120 – V – X – F – W 30 ¹ EI 30 – V – X – F – W 30 ²
			E 120 – T – X – F – W 30 ³ EI 45 – T – X – F – W 30 ⁴

*Additional and for information only.

The classifications provided in Table A.2.5.1 consider the insulation performance of all components within the firestopping system as per the requirements of EN 1366-4. This includes temperature evaluation of the steel substrate.

In relation to each of the above classifications, temperatures recorded on the seal (exclusive of the supporting construction) exceeded the maximum allowable after the following times (rounded down):

Ytelseserklæring
Sikacryl 621 Fire+

79744211
2021.10 , ver. 1
1549

FOR NÆRMERE INFORMASJON:

Sika Norge AS
Sanitetsveien 1,
NO-2013 SKJETTEN, Norge

tlf. +47 67 06 79 00
www.sika.no

¹120, ²90, ³120, ⁴60

Ytelseserklæring
Sikacryl 621 Fire+

79744211
2021.10 , ver. 1
1549

**FOR NÆRMERE
INFORMASJON:**

Sika Norge AS
Sanitetsveien 1,
NO-2013 SKJETTEN, Norge

tlf. +47 67 06 79 00
www.sika.no

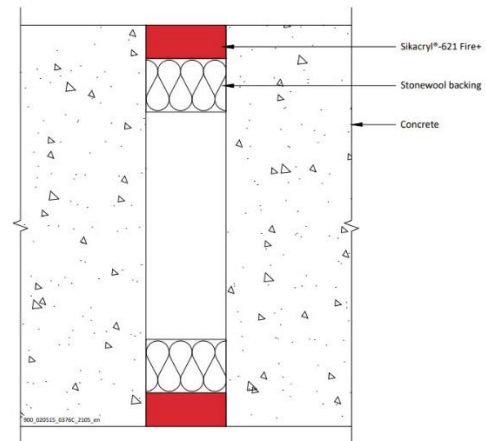
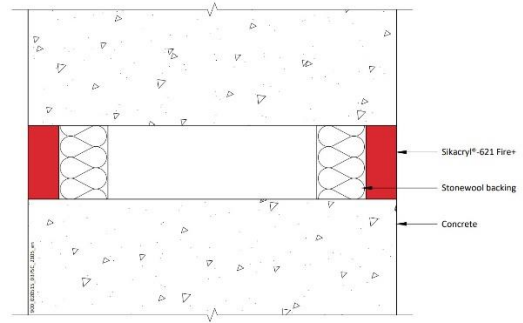
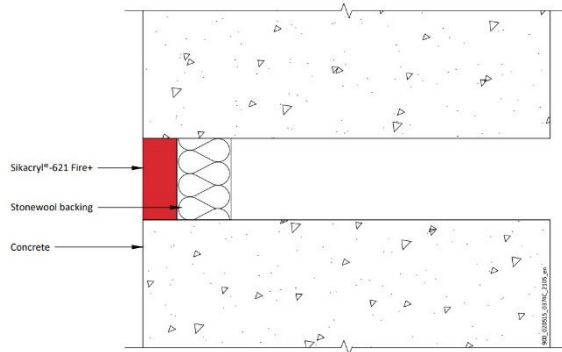
11/34

A.3 Rigid wall constructions according to 1.2.1 with wall thickness of minimum 150 mm

A.3.1 Linear joint or gap seal, between head of rigid wall and soffit of concrete floor / between rigid walls

Joint Seal: Sikacryl-621 Fire+ to either side (or any position between) or both sides of the wall, joint widths up to 30 mm

Construction details:



Ytelseserklæring
Sikacryl 621 Fire+

79744211
2021.10 , ver. 1
1549

**FOR NÆRMERE
INFORMASJON:**

Sika Norge AS
Sanitetsveien 1,
NO-2013 SKJETTEN, Norge

tlf. +47 67 06 79 00
www.sika.no

12/34

A.3.1.1

Substrate	Depth (mm)	Backing (minimum)	Classification
masonry/ concrete	25 min. (one side)	20 mm Stone wool 40 kg/m ³	E 240 – T – X – F – W 30 EI 60 – T – X – F – W 30
	15 min. (both sides)		EI 240 – V – X – F – W 30 EI 240 – T – X – F – W 30
	10 min. (one side)	60 mm Stone wool 33 kg/m ³	E 240 – T – X – F – W 50 EI 60 – T – X – F – W 50 EI 120 – V – X – F – W 50
	25 min. (one side)	48 mm AES mineral fibre	E 240 – T – X – F – W 30 EI 120 – T – X – F – W 30

Ytelseserklæring
Sikacryl 621 Fire+

79744211
2021.10 , ver. 1
1549

FOR NÆRMERE INFORMASJON:

Sika Norge AS
Sanitetsveien 1,
NO-2013 SKJETTEN, Norge

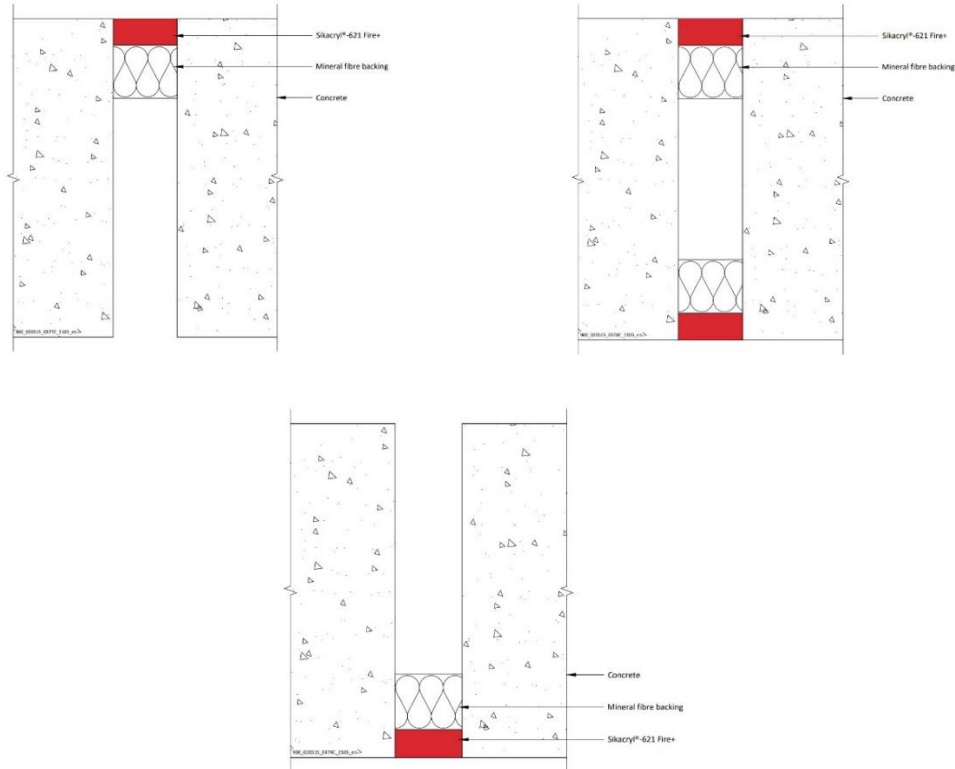
tlf. +47 67 06 79 00
www.sika.no

A.4 Rigid floor constructions according to 1.2.1 with floor thickness of minimum 150 mm

A.4.1 Linear joint or gap seal, between floor slabs or between floor slab and wall with sealant to the top face of the floor only

Joint Seal: Sikacryl-621 Fire+ to either side (or any position between) or both sides of the floor, joint widths up to 100 mm

Construction details:



A.4.1.1

Substrate	Depth (mm)	Backing (minimum)	Classification
masonry/ concrete	25 min. (any position)	25 mm AES mineral fibre	E 120 – H – X – F – W 100 EI 60 – H – X – F – W 100
	25 min (top face)		EI 180 – H – X – F – W 100
	15 min. (both sides)	25 mm Stone wool 40 kg/m ³	EI 120 – H – X – F – W 100

Ytelseserklæring
Sikacryl 621 Fire+

79744211
2021.10 , ver. 1
1549

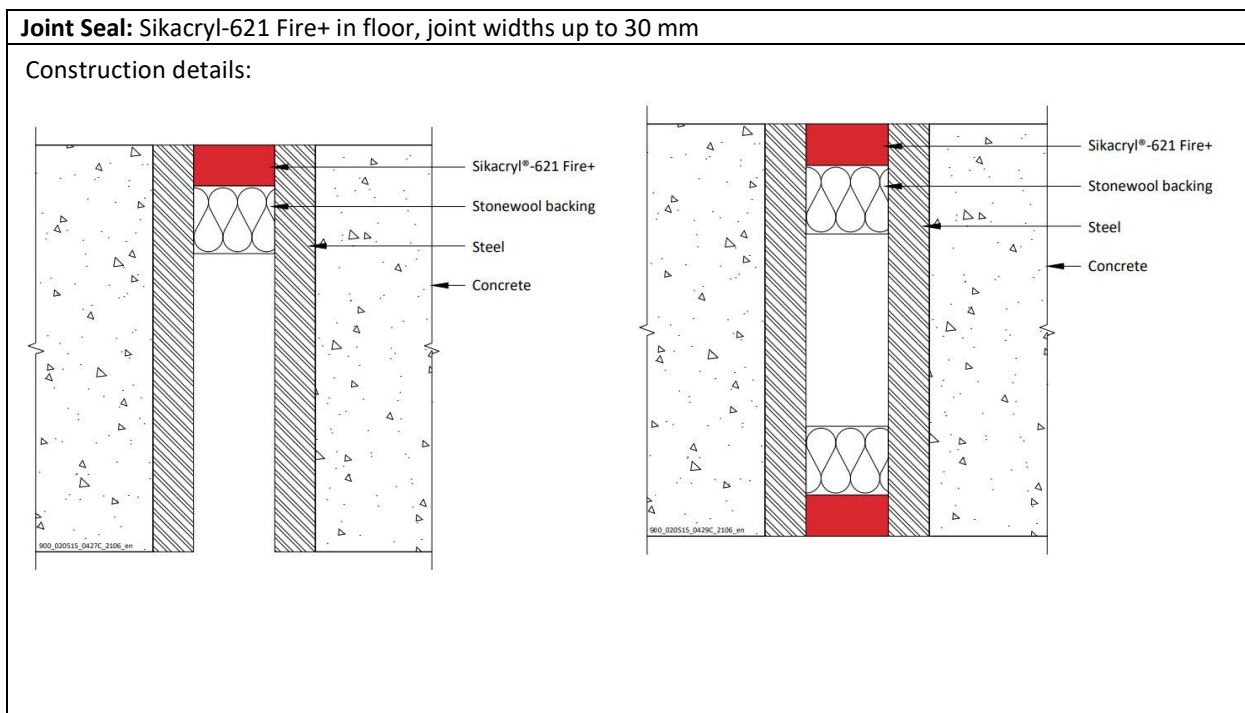
**FOR NÆRMERE
INFORMASJON:**

Sika Norge AS
Sanitetsveien 1,
NO-2013 SKJETTEN, Norge

tlf. +47 67 06 79 00
www.sika.no

		25 mm Stone wool 140 kg/m ³	EI 180 – H – X – F – W 100
	15 min. (both sides)	25 mm stone wool 35 kg/m ³ insulation	EI 240 – H – X – F – W 30
	10 min. (top face)	90 mm Stone wool 33 kg/m ³	EI 240 – H – X – F – W 100

A.4.2 Linear joint or gap seals, in or between rigid floors



A.4.2.1

Substrate	Depth (mm)	Backing	Position	Classification
Steel/ steel or Steel/ concrete	25 min.	Stonewool, 50 mm deep min. 35 kg/m ³	Top	E 240 – H – X – F – W 30¹ EI 30 – H – X – F – W 30²
	15 min.	Stonewool, 25 mm deep min. 35 kg/m ³	Both	E 240 – H – X – F – W 30³ EI 45 – H – X – F – W 30⁴
Aluminium / concrete	25 min.	Stonewool, 50 mm deep min. 35 kg/m ³	Top	E 180 – H – X – F – W 30⁵ EI 20 – H – X – F – W 30⁶

Ytelseserklæring
Sikacryl 621 Fire+

79744211
2021.10, ver. 1
1549

FOR NÆRMERE INFORMASJON:

Sika Norge AS
Sanitetsveien 1,
NO-2013 SKJETTEN, Norge

tlf. +47 67 06 79 00
www.sika.no

*Additional and for information only.

The classifications provided in Table A.4.2.1 consider the insulation performance of all components within the firestopping system as per the requirements of EN 1366-4. This includes temperature evaluation of the steel substrate.

In relation to each of the above classifications, temperatures recorded on the seal (exclusive of the supporting construction) exceeded the maximum allowable after the following times (rounded down):

¹ 240, ² 60, ³ 240, ⁴ 120, ⁵ 180, ⁶ 60

Ytelseserklæring
Sikacryl 621 Fire+

79744211
2021.10 , ver. 1
1549

**FOR NÆRMERE
INFORMASJON:**

Sika Norge AS
Sanitetsveien 1,
NO-2013 SKJETTEN, Norge

tlf. +47 67 06 79 00
www.sika.no

16/34

**8 RELEVANT TEKNISK DOKUMENTASJON OG/ELLER
SPESIFIKK TEKNISK DOKUMENTASJON**

Ytelsen til produktet identifisert ovenfor er i samsvar med settet med deklarererte ytelser. Denne ytelseserklæringen er utstedt, i samsvar med forordning (EU) nr. 305/2011, under eget ansvar av produsenten som er identifisert ovenfor.
Undertegnet for og på vegne av produsenten av:

Navn : Tomek Gutowski
Function: Corporate Certification and Approvals
At Warsaw on 13 December 2021

Navn : Maciej Michalewski
Function: Standardization and Approvals
At Warsaw on 13 December 2021

.....

End of information as required by Regulation (EU) No 305/2011

Ytelseserklæring
Sikacryl 621 Fire+


79744211
2021.10 , ver. 1
1549

**FOR NÆRMERE
INFORMASJON:**

Sika Norge AS
Sanitetsveien 1,
NO-2013 SKJETTEN, Norge

tlf. +47 67 06 79 00
www.sika.no

FULL CE-MERKING

 21	
Sika Services AG, Zurich, Switzerland	
DoP No. 79744211	
Reaction to fire	D – s1, d1
Resistance to fire	Annex A
Durability	Z2
Airborne sound insulation	Rw(C;Ctr)= 62 (-1;-5) dB*

Ytelseserklæring
Sikacryl 621 Fire+

79744211
2021.10 , ver. 1
1549

FOR NÆRMERE INFORMASJON:

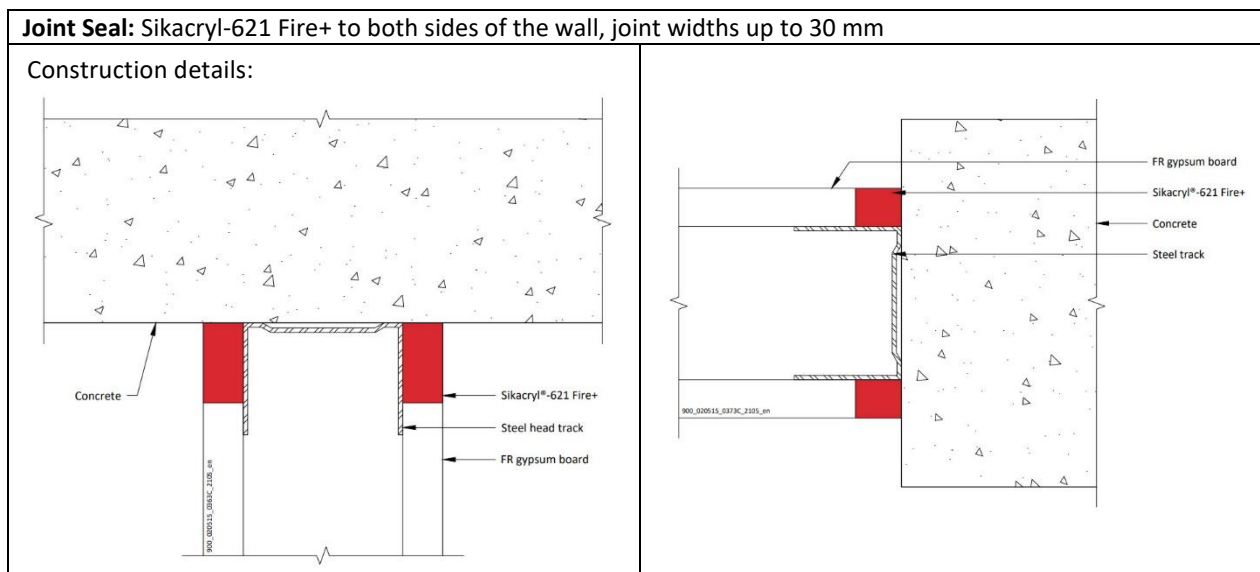
Sika Norge AS
Sanitetsveien 1,
NO-2013 SKJETTEN, Norge

tlf. +47 67 06 79 00
www.sika.no

18/34

Annex A – Resistance to Fire Classification – Sikacryl-621 Fire+Flexible wall constructions according to 2 1) with wall thickness of minimum 75 mm and minimum 1 x layer of 12.5 mm board per side

A.1.1 Linear joint seals, between head of flexible wall and soffit of concrete floor and vertical end of flexible wall and concrete wall



A.1.1.1

Substrate	Depth (mm)	Backing (minimum)	Classification
Plasterboard/ concrete	12.5 min.	50 mm steel partition head track/ stud	E 60 – T – X – F – W 25 EI 45 – T – X – F – W 25
			E 60 – V – X – F – W 15 EI 45 – V – X – F – W 15

Ytelseserklæring
Sikacryl 621 Fire+

79744211
2021.10 , ver. 1
1549

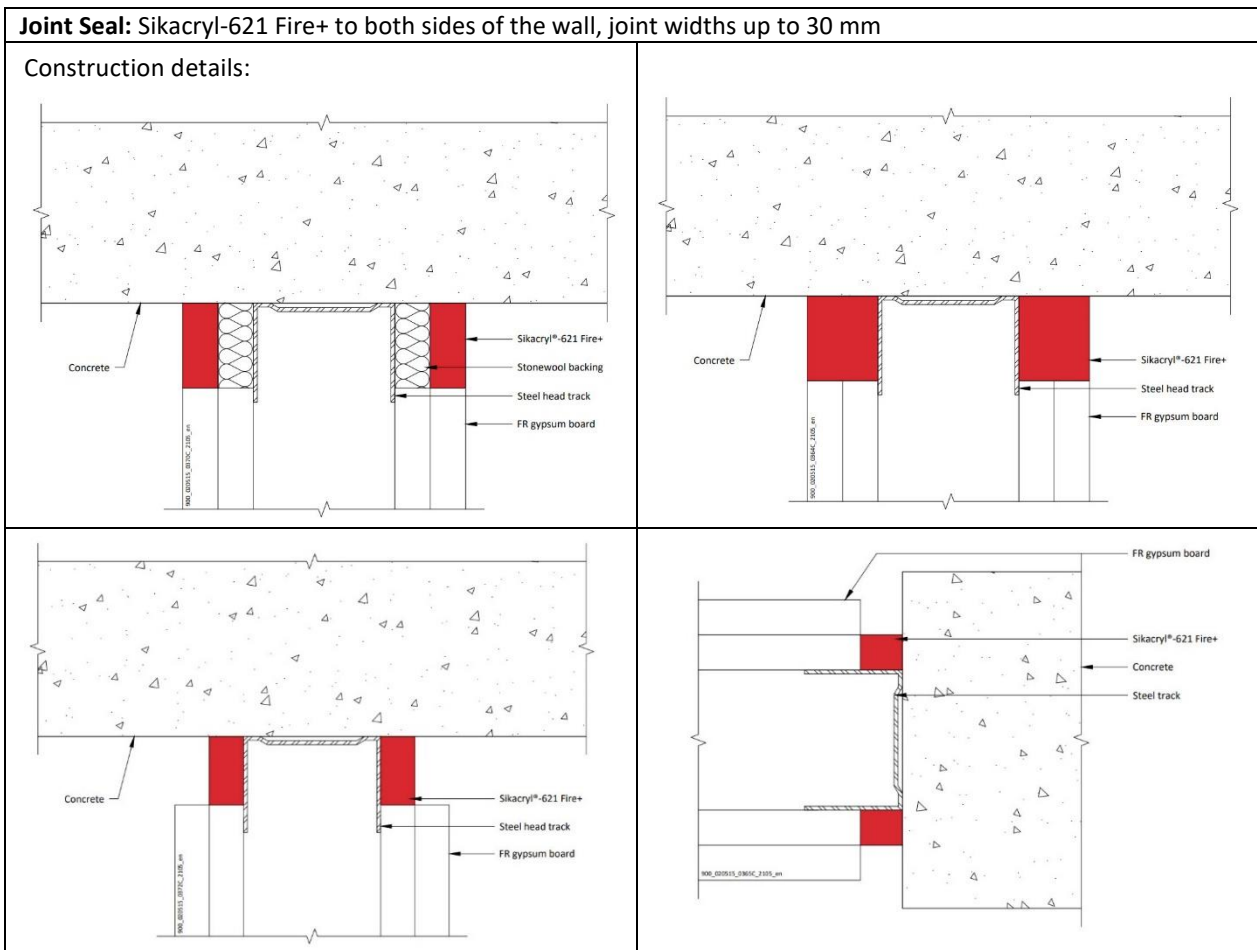
FOR NÆRMERE INFORMASJON:

Sika Norge AS
Sanitetsveien 1,
NO-2013 SKJETTEN, Norge

tlf. +47 67 06 79 00
www.sika.no

A.2 Flexible wall constructions according to 1.2.1 with wall thickness of minimum 100 mm and minimum 2 x layer of 12.5 mm board per side

A.2.1 Linear joint seals, between head of flexible wall and soffit of concrete floor and vertical end of flexible wall and concrete wall



A.2.1.1

Substrate	Depth (mm)	Backing (minimum)	Classification
Plasterboard/ concrete	12.5 min.	12.5 mm Stone wool 35 kg/m ³ plus 50 mm steel partition head track	EI 120 – T – X – F – W 30

Ytelseserklæring
Sikacryl 621 Fire+

79744211
2021.10 , ver. 1
1549

**FOR NÆRMERE
INFORMASJON:**

Sika Norge AS
Sanitetsveien 1,
NO-2013 SKJETTEN, Norge

tlf. +47 67 06 79 00
www.sika.no

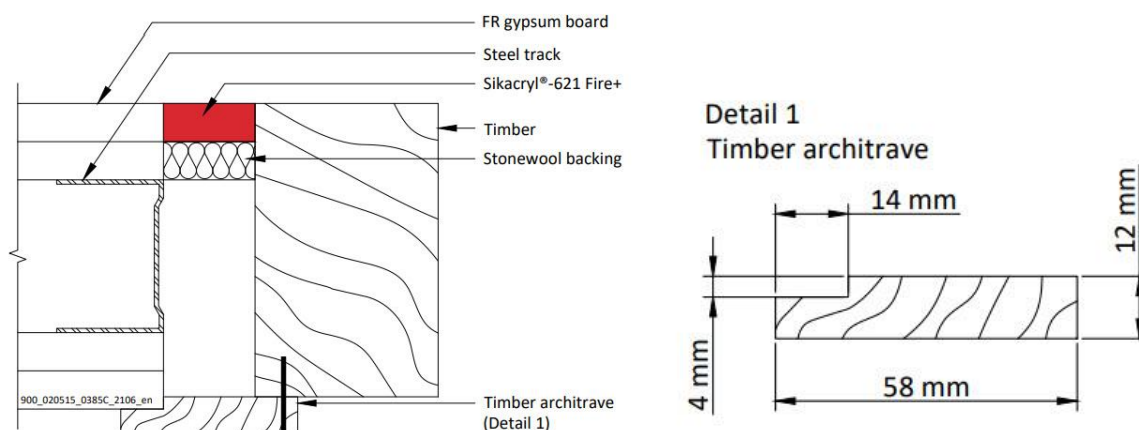
		20 mm Stone wool 35 kg/m ³	EI 120 – V – X – F – W 30
	25 min.	50 mm steel partition head track /stud	EI 120 – T – X – F – W 30
	12.5 min.		EI 90 – T – X – F – W 25
			EI 90 – V – X – F – W 15

A.2.2 Flexible or rigid wall construction with wall thickness of minimum 100 mm and timber substrates and architraves

B.2.2.1 Linear joint or gap seals, vertically or horizontal orientated with backing materials

Joint Seal: Sikacryl-621 Fire+ to one side of the wall, joint widths up to 30 mm

Construction details:



B.2.2.2

Substrate	Depth (mm)	Facing (minimum)	Backing	Classification
Flexible or rigid wall / Timber	12.5 min.	Single sided linear seals in flexible or rigid walls against wooden frames covered with architraves on the other side fixed with 25 mm steel pins at nominal 300 mm centres.	Stonewool, 12.5 mm deep min. 35 kg/m ³	EI 60 – V – X – F – W 30
				EI 60 – T – X – F – W 30

Ytelseserklæring
Sikacryl 621 Fire+

79744211
2021.10 , ver. 1
1549

FOR NÆRMERE INFORMASJON:

Sika Norge AS
Sanitetsveien 1,
NO-2013 SKJETTEN, Norge

tlf. +47 67 06 79 00
www.sika.no

Ytelseserklæring
Sikacryl 621 Fire+

79744211
2021.10 , ver. 1
1549

**FOR NÆRMERE
INFORMASJON:**

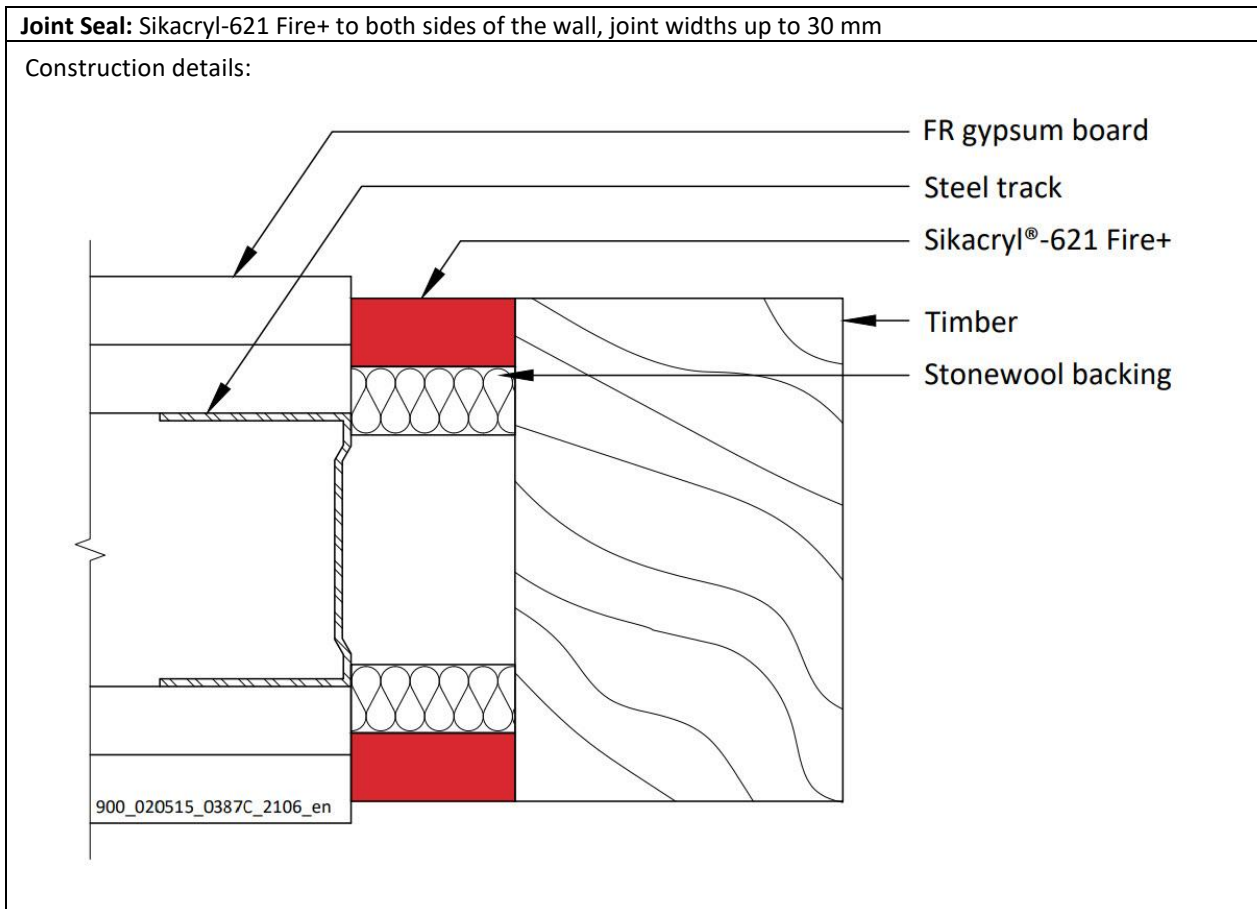
Sika Norge AS
Sanitetsveien 1,
NO-2013 SKJETTEN, Norge

tlf. +47 67 06 79 00
www.sika.no

22/34

A.2.3 Flexible or rigid wall construction with wall thickness of minimum 100 mm and timber substrates

B.2.3.1 Linear joint or gap seals, vertically or horizontal orientated with backing materials



A.2.3.2

Substrate	Depth (mm)	Backing	Classification
Flexible or rigid wall / Timber	12.5 min.	Stonewool, 12.5 mm deep min. 35 kg/m ³	E 90 – V – X – F – W 30
			EI 60 – V – X – F – W 30
			E 90 – T – X – F – W 30

Ytelseserklæring
Sikacryl 621 Fire+

79744211
2021.10, ver. 1
1549

FOR NÆRMERE INFORMASJON:

Sika Norge AS
Sanitetsveien 1,
NO-2013 SKJETTEN, Norge

tlf. +47 67 06 79 00
www.sika.no

Ytelseserklæring
Sikacryl 621 Fire+

79744211
2021.10 , ver. 1
1549

**FOR NÆRMERE
INFORMASJON:**

Sika Norge AS
Sanitetsveien 1,
NO-2013 SKJETTEN, Norge

tlf. +47 67 06 79 00
www.sika.no

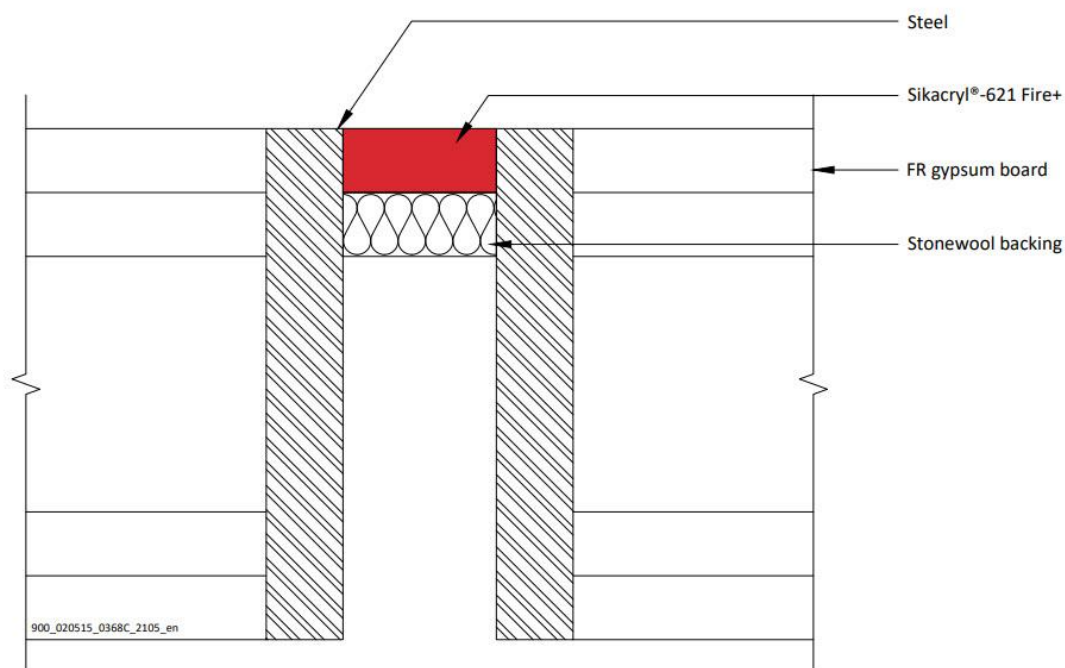
24/34

A.2.4 Flexible or rigid wall construction with wall thickness of minimum 100 mm and steel substrates

A.2.4.1 Linear joint or gap seals, vertically or horizontal orientated with backing materials

Joint Seal: Sikacryl-621 Fire+ to one side of the wall, with joint widths up to 30 mm.

Construction details:



A.2.4.2

Substrate	Depth (mm)	Backing	Classification
Steel / steel	12.5 min.	Stonewool, 12.5 mm deep min. 35 kg/m ³	E 120 – V – X – F – W 30
			EI 30 – V – X – F – W 30
			E 120 – T – X – F – W 30
			EI 30 – T – X – F – W 30

Ytelseserklæring
Sikacryl 621 Fire+

79744211
2021.10 , ver. 1
1549

FOR NÆRMERE INFORMASJON:

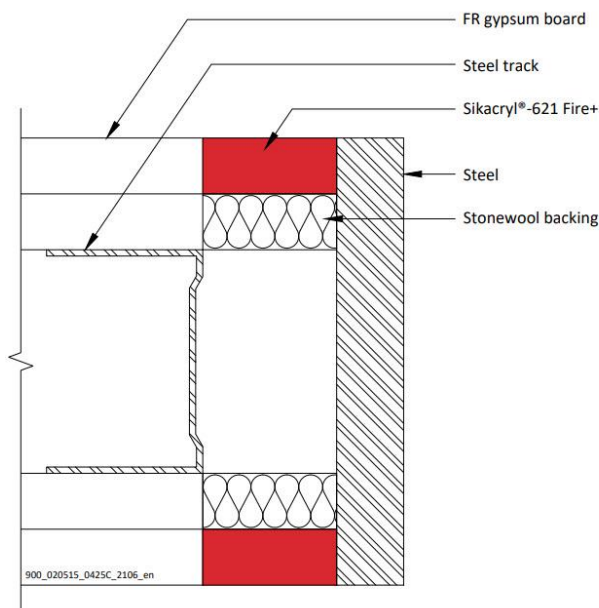
Sika Norge AS
Sanitetsveien 1,
NO-2013 SKJETTEN, Norge

tlf. +47 67 06 79 00
www.sika.no

A.2.5 Linear joint or gap seals, vertically or horizontal orientated with backing materials

Joint Seal: Sikacryl-621 Fire+ to both sides of the wall, with joint widths up to 30 mm.

Construction details:



A.2.5.1

Substrate	Depth (mm)	Backing	Classification
Flexible or rigid wall / Steel	12.5 min.	Stonewool, 12.5 mm deep min. 35 kg/m ³	E 120 – V – X – F – W 30 ¹ EI 30 – V – X – F – W 30 ²
			E 120 – T – X – F – W 30 ³ EI 45 – T – X – F – W 30 ⁴

*Additional and for information only.

The classifications provided in Table A.2.5.1 consider the insulation performance of all components within the firestopping system as per the requirements of EN 1366-4. This includes temperature evaluation of the steel substrate.

In relation to each of the above classifications, temperatures recorded on the seal (exclusive of the supporting construction) exceeded the maximum allowable after the following times (rounded down):

Ytelseserklæring
Sikacryl 621 Fire+

79744211
2021.10 , ver. 1
1549

FOR NÆRMERE INFORMASJON:

Sika Norge AS
Sanitetsveien 1,
NO-2013 SKJETTEN, Norge

tlf. +47 67 06 79 00
www.sika.no

¹120, ²90, ³120, ⁴60

Ytelseserklæring
Sikacryl 621 Fire+

79744211
2021.10 , ver. 1
1549

**FOR NÆRMERE
INFORMASJON:**

Sika Norge AS
Sanitetsveien 1,
NO-2013 SKJETTEN, Norge

tlf. +47 67 06 79 00
www.sika.no

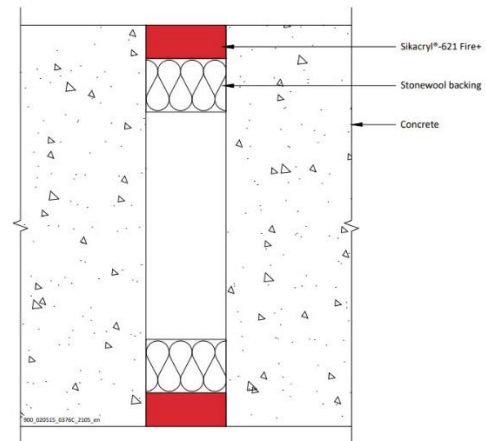
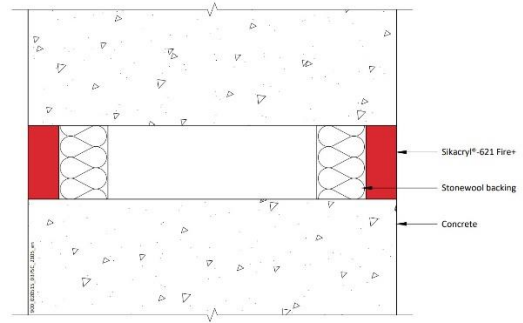
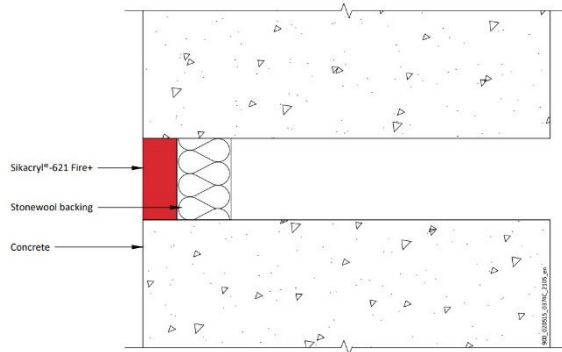
27/34

A.3 Rigid wall constructions according to 1.2.1 with wall thickness of minimum 150 mm

A.3.1 Linear joint or gap seal, between head of rigid wall and soffit of concrete floor / between rigid walls

Joint Seal: Sikacryl-621 Fire+ to either side (or any position between) or both sides of the wall, joint widths up to 30 mm

Construction details:



Ytelseserklæring
Sikacryl 621 Fire+

79744211
2021.10 , ver. 1
1549

**FOR NÆRMERE
INFORMASJON:**

Sika Norge AS
Sanitetsveien 1,
NO-2013 SKJETTEN, Norge

tlf. +47 67 06 79 00
www.sika.no

28/34

A.3.1.1

Substrate	Depth (mm)	Backing (minimum)	Classification
masonry/ concrete	25 min. (one side)	20 mm Stone wool 40 kg/m ³	E 240 – T – X – F – W 30 EI 60 – T – X – F – W 30
	15 min. (both sides)		EI 240 – V – X – F – W 30 EI 240 – T – X – F – W 30
	10 min. (one side)	60 mm Stone wool 33 kg/m ³	E 240 – T – X – F – W 50 EI 60 – T – X – F – W 50 EI 120 – V – X – F – W 50
	25 min. (one side)	48 mm AES mineral fibre	E 240 – T – X – F – W 30 EI 120 – T – X – F – W 30

Ytelseserklæring
Sikacryl 621 Fire+

79744211
2021.10 , ver. 1
1549

FOR NÆRMERE INFORMASJON:

Sika Norge AS
Sanitetsveien 1,
NO-2013 SKJETTEN, Norge

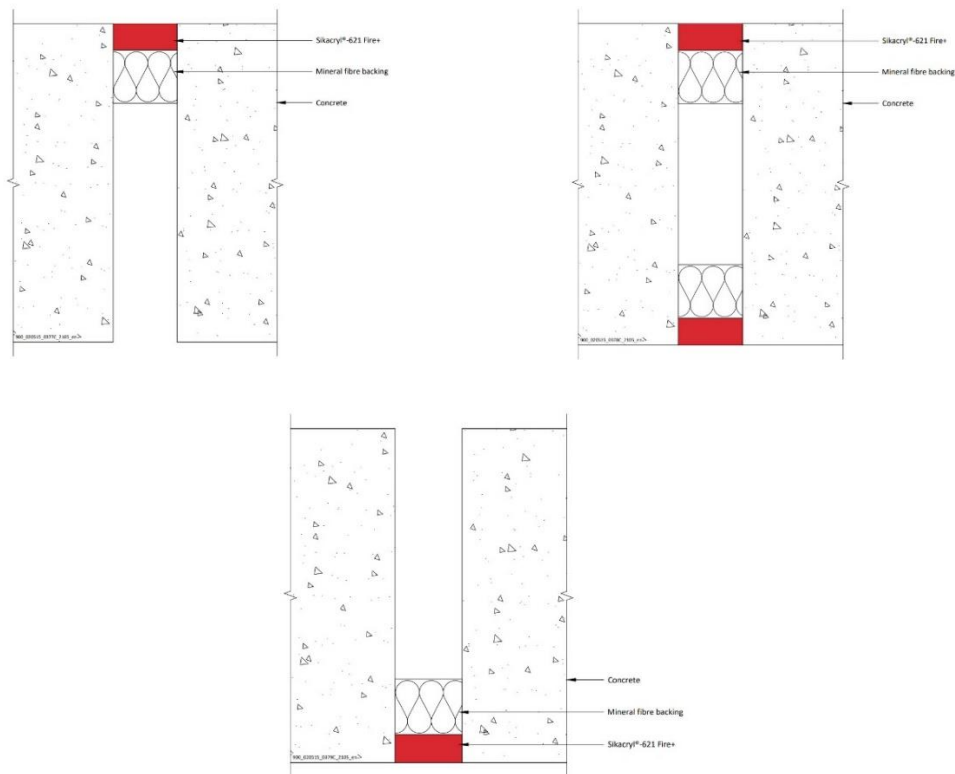
tlf. +47 67 06 79 00
www.sika.no

A.4 Rigid floor constructions according to 1.2.1 with floor thickness of minimum 150 mm

A.4.1 Linear joint or gap seal, between floor slabs or between floor slab and wall with sealant to the top face of the floor only

Joint Seal: Sikacryl-621 Fire+ to either side (or any position between) or both sides of the floor, joint widths up to 100 mm

Construction details:



A.4.1.1

Substrate	Depth (mm)	Backing (minimum)	Classification
masonry/ concrete	25 min. (any position)	25 mm AES mineral fibre	E 120 – H – X – F – W 100 EI 60 – H – X – F – W 100
	25 min (top face)		EI 180 – H – X – F – W 100
	15 min. (both sides)	25 mm Stone wool 40 kg/m ³	EI 120 – H – X – F – W 100

Ytelseserklæring
Sikacryl 621 Fire+

79744211
2021.10 , ver. 1
1549

**FOR NÆRMERE
INFORMASJON:**

Sika Norge AS
Sanitetsveien 1,
NO-2013 SKJETTEN, Norge

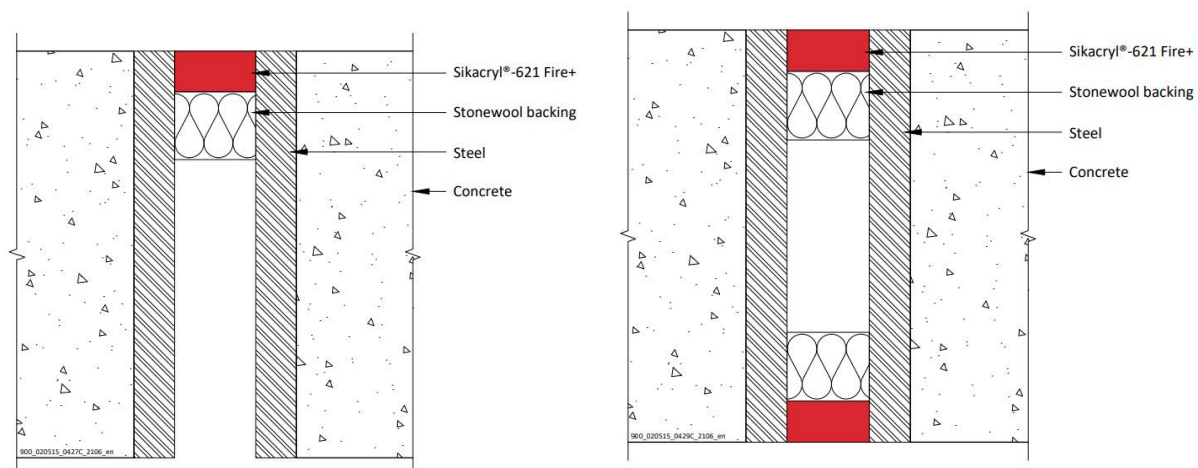
tlf. +47 67 06 79 00
www.sika.no

		25 mm Stone wool 140 kg/m ³	EI 180 – H – X – F – W 100
	15 min. (both sides)	25 mm stone wool 35 kg/m ³ insulation	EI 240 – H – X – F – W 30
	10 min. (top face)	90 mm Stone wool 33 kg/m ³	EI 240 – H – X – F – W 100

A.4.2 Linear joint or gap seals, in or between rigid floors

Joint Seal: Sikacryl-621 Fire+ in floor, joint widths up to 30 mm

Construction details:



Ytelseserklæring
Sikacryl 621 Fire+

79744211
2021.10, ver. 1
1549

FOR NÆRMERE INFORMASJON:

Sika Norge AS
Sanitetsveien 1,
NO-2013 SKJETTEN, Norge

tlf. +47 67 06 79 00
www.sika.no

A.4.2.1

Substrate	Depth (mm)	Backing	Position	Classification
Steel/ steel or Steel/ concrete	25 min.	Stonewool, 50 mm deep min. 35 kg/m ³	Top	E 240 – H – X – F – W 30 ¹ EI 30 – H – X – F – W 30 ²
	15 min.	Stonewool, 25 mm deep min. 35 kg/m ³	Both	E 240 – H – X – F – W 30 ³ EI 45 – H – X – F – W 30 ⁴
Aluminium / concrete	25 min.	Stonewool, 50 mm deep min. 35 kg/m ³	Top	E 180 – H – X – F – W 30 ⁵ EI 20 – H – X – F – W 30 ⁶

*Additional and for information only.

The classifications provided in Table A.4.2.1 consider the insulation performance of all components within the firestopping system as per the requirements of EN 1366-4. This includes temperature evaluation of the steel substrate.

In relation to each of the above classifications, temperatures recorded on the seal (exclusive of the supporting construction) exceeded the maximum allowable after the following times (rounded down):

¹ 240, ² 60, ³ 240, ⁴ 120, ⁵ 180, ⁶ 60

EAD 350141-00-1106:2017
Notified Body 2531
Fire Stopping and Sealing Product: Linear Joint and Gap Seals

<http://dop.sika.com>

Ytelseserklæring
Sikacryl 621 Fire+

79744211
2021.10 , ver. 1
1549


FOR NÆRMERE INFORMASJON:

Sika Norge AS
Sanitetsveien 1,
NO-2013 SKJETTEN, Norge

tlf. +47 67 06 79 00
www.sika.no

32/34

CE-ETIKETT

 21
Sika Services AG, Zurich, Switzerland
79744211
For details see accompanying documents
EAD 350141-00-1106:2017
Notified Body 2531
Fire Stopping and Sealing Product: Linear Joint and Gap Seals

<http://dop.sika.com>

HELSE, MILJØ OG SIKKERHETS INFORMASJON (REACH)

Brukere skal alltid forholde seg til sist oppdaterte versjon av produktdatablad og HMS-datablad for det aktuelle produktet. Kopier av gjeldende versjoner finnes på Sika Norges nettsider: www.sika.no.

PRODUKTANSVAR

Denne informasjonen og i særdeleshet anbefalingene i forbindelse med anvendelse av Sika-produkter er gitt i god tro, basert på Sikas inneværende kunnskap og erfaring med produktene når de er riktig lagret, behandlet og anvendt under normale forhold. I praksis vil forskjellene i materialer, underlag og lokale forhold være av en slik karakter at verken denne informasjonen, andre skriftlige anbefalinger eller noen annen form for råd kan innebære noen garanti med hensyn til det bearbejdede produktets omsetnings-potensial eller egnethet for et bestemt formål, ei heller noen annen form for juridisk ansvar. Tredjeparts eiendomsrett må respekteres. Enhver ordre aksepteres i henhold til Sikas gjeldende salgs- og leverings-betingelser. Brukere skal alltid forholde seg til sist oppdaterte versjon av produktdatablad og HMS-datablad for det aktuelle produktet. Kopier av gjeldende versjoner finnes på Sika Norges nettsider

Ytelseserklæring
Sikacryl 621 Fire+

79744211
2021.10 , ver. 1
1549

FOR NÆRMERE INFORMASJON:

Sika Norge AS
Sanitetsveien 1,
NO-2013 SKJETTEN, Norge

tlf. +47 67 06 79 00
www.sika.no

Ytelseserklæring
Sikacryl 621 Fire+

79744211
2021.10 , ver. 1
1549

**FOR NÆRMERE
INFORMASJON:**

Sika Norge AS
Sanitetsveien 1,
NO-2013 SKJETTEN, Norge

tlf. +47 67 06 79 00
www.sika.no

34/34