

The fastest installation in gypsum plasterboard



BUILDING MATERIALS

- Gypsum plasterboard, single and double-planked

CERTIFICATES



ADVANTAGES

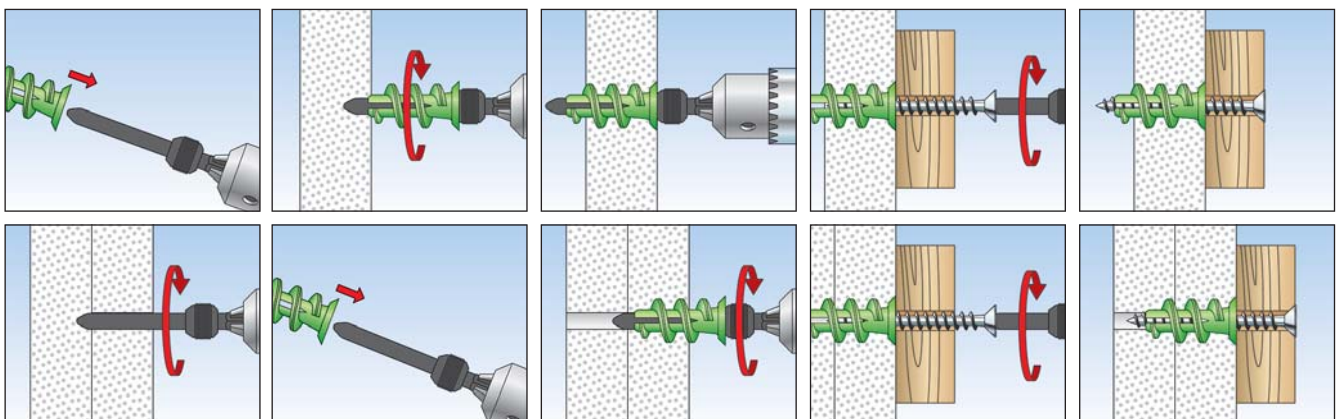
- Produced with at least 50% renewable raw materials and therefore particularly environmentally friendly.
- Just as effective, secure and durable as regular GK plugs.
- The included setting tool combine the functions of drilling and setting fixings for direct and easy installation.
- Sharp, self-tapping thread for a positive-fit connection with a high load-bearing capacity.
- The cross-drive recess in the head of the fixing means that the GK GREEN can also easily be screwed out like a screw.
- The GK GREEN can be used with various screws, hooks and eye screws, making it very versatile in its applications.

APPLICATIONS

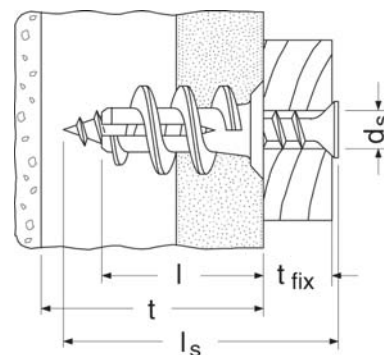
- Pictures
- Lighting
- Electrical installations
- Fitting accessories
- Series installations

FUNCTIONING

- The gypsum plasterboard fixing GK GREEN is suitable for pre-positioned installation.
- The GK GREEN is screwed flush into the gypsum plasterboard using the setting tool provided. Avoid manual and machine-aided overtightening.
- For board thicknesses greater than 15 mm, drill a hole first by using the setting tool.
- Adapted for wood, sheet metal and chipboard screws with a diameter of 4.0 to 5.0 mm.
- Not suitable for gypsum fibreboard and tiled plasterboard.



TECHNICAL DATA



Item	Art.-No.	Anchor length l [mm]	Min. thickness to first supporting layer t [mm]	Max. fixture thick- ness t _{fix} [mm]	Screw d _s x l _s [mm]	Drive	Sales unit [pcs]
GK GREEN	524868 ^{1) 2)}	22	25	—	4,0 - 5,0 x L _s	—	90
GK GREEN S	524869 ^{1) 3)}	22	25	13	4,5 x 35	PZ2	45

1) Including installation tool GKW.

2) Min. screw length = length of plug 22 mm + thickness of building component.

3) Supplied with plasterboard screw.

ACCESSORIES



Item	Art.-No.	Sales unit [pcs]
GKW	052393	10

LOADS

Plasterboard fixing GK GREEN

Highest recommended loads¹⁾ for a single anchor.

The given loads are valid for chipboard screws with the specified diameter.

Type	GK GREEN	
Chipboard screw	Ø [mm]	4,0 - 5,0
Recommended loads in the respective base material F_{rec}²⁾		
Gypsum plasterboard	9,5 mm [kN]	0,07
Gypsum plasterboard	12,5 mm [kN]	0,08
Gypsum plasterboard	2 x 12,5 mm [kN]	0,11

¹⁾ Required safety factors are considered.

²⁾ Valid for tensile load, shear load and oblique load under any angle.