



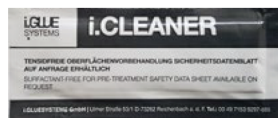
POWER.mini

INSTALLATION INSTRUCTIONS // MONTERINGSANVISNING

Set components // Settet inneholder



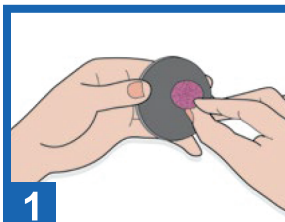
Sponge
Svamp



Cleaning cloth
Renseklut



Glue
Lim



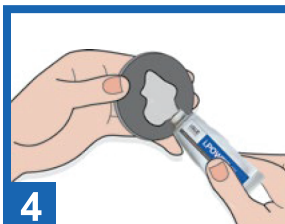
1



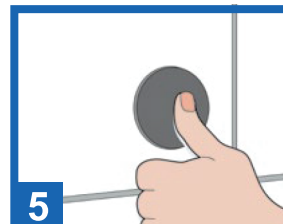
2



3



4



5



6

Removal // Demontering



1. Use the sponge to roughen the surface as pretreatment for gluing.
2. Wipe the surface clean and dry with the i.CLEANER cleaning cloth.
3. Make sure the wall surface is clean, dry and free from dust and grease.
4. Apply the glue on the fixation plate. **OBSERVE!** If gluing between two airtight surfaces, eg. tiles and metal, the glue must be moistured before applied to the wall. Spray some water on the glue before fastening or use i.CLEANER spray (extra).
5. Fasten the fixation plate to the wall and make sure it is tightly fitted.
6. Let the glue cure before put load on the item. The time for curing is depending on surrounding tempertaure and moisture. By adding extra moisture reduces the curing time.



1. Benytt medfølgende svamp til å rubbe opp overflaten som skal limes.
2. Rengjør limflaten med i.CLEANER-reenseklut.
3. Rengjør veggene med i.CLEANER-reenseklut.
4. Påfør lim på den rengjorte monteringsplaten. **MERK!** Ved liming mellom to diffusjonsbestandige overflater, f.eks. metall til fliser, må limet fuktes før montering. Spray litt vann på limet eller eventuelt benytt i.CLEANER spray (ekstra).
5. Press monteringsplaten hardt mot veggene slik at den fester godt.
6. Belast ikke limet før det er herdet ferdig. Herdetiden er avhengig av temperatur og luftfuktighet. Fukter man limflatene med litt vann vil dette redusere herdetiden.