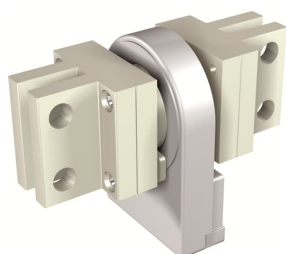


PRODUCT-DETAILS

# EXT CS E4.2 4000A - E6.2 N 50%

## EXT CS E4.2 4000A - E6.2 N 50%



### General Information

Extended Product Type	EXT CS E4.2 4000A - E6.2 N 50%
Product ID	1SDA073739R1
EAN	8015644776725
Catalog Description	EXT CS E4.2 4000A - E6.2 N 50%
Long Description	CURRENT SENSOR FOR EXTERNAL NEUTRAL InN=50% E4.2 4000A - E6.2

### Circular Value

Conflict Minerals Reporting Template (CMRT)	9AKK108467A5658
Toxic Substances Control Act - TSCA	9AKK108467A8326

### Environmental

Environmental Information	9AKK108467A6707
REACH Declaration	9AKK108466A1425
RoHS Information	9AKK108466A1424
RoHS Status	Following EU Directive 2011/65/EU and Amendment 2015/863 July 22, 2019

## Ordering

Order Code US and Canada	ZE6NCTE
EAN	8015644776725
Minimum Order Quantity	1 piece
Customs Tariff Number	85389099

## Dimensions

Product Net Weight	5 kg
--------------------	------

## Container Information

Package Level 1 Units	box 1 piece
Package Level 1 Width	125 mm
Package Level 1 Height	185 mm
Package Level 1 Depth / Length	225 mm
Package Level 1 Gross Weight	5.66 kg
Package Level 1 EAN	8015644776725

## Additional Information

Configuration Type	Loose or configurable
Product Main Type	Accessories for Emax 2
Product Name	Accessory
Product Type	Accessory
Standards	IEC
Suitable For	E4.2, E6.2
Suitable for Product Class	SACE Emax 2

## Certificates and Declarations

Data Sheet, Technical Information	1SDC200023D0204
Declaration of Conformity - CE	Refer to the EU Declaration of the relative Circuit Breaker
Instructions and Manuals	1SDH001000R0515

## Classifications

ETIM 7	EC002498 - Accessories for low-voltage switch technology
ETIM 8	EC002498 - Accessories/spare parts for low-voltage switch technology
ETIM 9	EC002498 - Accessories/spare parts for low-voltage switch technology
Object Classification Code	Q
WEEE Category	5. Small Equipment (No External Dimension More Than 50 cm)
eClass	V11.1 : 27371392

---

## Categories

---

Low Voltage Products and Systems → Circuit Breakers → Air Circuit Breakers → Accessories for Emax 2

