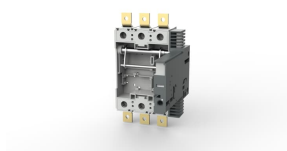


PRODUCT-DETAILS

# XT6 W FP 800A 3p EF EF IEC/UL

# XT6 W FP 800A 3p EF EF IEC/UL



## General Information

Extended Product Type	XT6 W FP 800A 3p EF EF IEC/UL
Product ID	1SDA104696R1
EAN	8015644067885
Catalog Description	XT6 W FP 800A 3p EF EF IEC/UL
Long Description	FIXED PART WITHDRAWABLE FOR C.BREAKER XT6 800 THREE-POLE WITH EXTENDED FRONT TERMINALS

## Circular Value

Conflict Minerals Reporting Template (CMRT)	9AKK108467A5658
Toxic Substances Control Act - TSCA	9AKK108467A8326

## Environmental

Environmental Information	9AKK107991A8215 9AKK108467A6707
REACH Declaration	9AKK108466A1425
RoHS Information	9AKK108466A1424
RoHS Status	Following EU Directive 2011/65/EU and Amendment 2015/863 July 22, 2019

---

**Ordering**

Order Code US and Canada	KXT6DWFPEFF-3
E-Number (Finland)	3641893
EAN	8015644067885
Minimum Order Quantity	1 piece
Customs Tariff Number	85389099

---

**Dimensions**

Product Net Weight	21.7 kg
--------------------	---------

---

**Container Information**

Package Level 1 Units	box 1 piece
Package Level 1 Width	360 mm
Package Level 1 Height	340 mm
Package Level 1 Depth / Length	380 mm
Package Level 1 Gross Weight	21.7 kg
Package Level 1 EAN	8015644067885

---

**Additional Information**

Configuration Type	Loose or configurable
Number of Poles	3
Order Multiple	1 piece
Product Main Type	Accessories for Tmax XT
Product Name	Accessory
Product Type	Fixed Part
Rated Frequency (f)	50 / 60 Hz
Rated Operational Voltage	600 V AC
Rated Uninterrupted Current (I <sub>u</sub> )	800 A
Standards	IEC, UL
Sub-type	XT6
Suitable For	XT6
Suitable for Product Class	SACE Tmax XT
Terminal Connection Type	Withdrawable Circuit-Breakers Front Extended
Version	W

---

**Certificates and Declarations**

Data Sheet, Technical Information	1SDC210100D0206 1SDC210200D0206
Declaration of Conformity - CE	Refer to the EU Declaration of the relative Circuit Breaker
Instructions and Manuals	1SDH002012A1003

---

## Classifications

---

ETIM 7	EC002043 - Chassis part power circuit breaker
ETIM 8	EC002043 - Chassis part power circuit breaker
ETIM 9	EC002043 - Chassis part power circuit breaker
IDEA Granular Category Code (IGCC)	4932 >> 3 Pole Non-Interchangeable Trip Electronic Circuit Breakers
UNSPSC	39121616
WEEE Category	5. Small Equipment (No External Dimension More Than 50 cm)
eClass	V11.1 : 27370422

---



---

## Categories

---

Low Voltage Products and Systems → Circuit Breakers → Moulded Case Circuit Breakers → Accessories for Tmax XT

