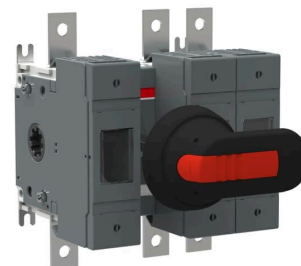


Product No: OS160GB12P

ABB OS160GB12P SWITCH FUSE OS160GB12P

FEATURES

- Handle IP65
- I-O/ON-OFF plastic handle
- 3 padlocks in O-OFF position.
- Door interlock in I-ON position
- IEC 60269-2
- Base mount



General Information

Brand	ABB
Product Type	Fuse Switch - BS Type
Type	Main Switch

Technical Attributes

Conventional Free-Air Thermal Current - I _{th} (A)	160
Conventional Thermal Current - I _{the} (A)	160
Design of Control Element	Long Turning Handle
Main Circuit Electrical Connection	Bolt Connection
Maximum Operational Voltage AC (V)	1000
Mode of Operation	Front Operated
No. of Poles	3
Operating Mechanism	Mechanism Between the Poles 12
Position of Control Element	Front Side
Power Loss (W)	12/Pole
Rated Conditional Short-Circuit Current - I _{nc} (kA)	80
Rated Current (A)	160
Rated Impulse Withstand Voltage (kV)	8
Rated Insulation Voltage (V)	1000
Rated Operational Current AC-22A 500V (A)	160
Rated Operational Current AC-22A 690V (A)	160
Rated Operational Current AC-23A 500V (A)	160
Rated Operational Current AC-23A 690V (A)	160
Rated Operational Power AC-23A 380-415V (kW)	132

Technical Attributes

Rated Operational Power AC-23A 400-415 V (kW)	75
Rated Operational Power AC-23A 500V (kW)	90
Rated Operational Power AC-23A 690V (kW)	132
Rated Operational Voltage (V)	690
Rated Short-Time Withstand Current - I _{cw} (kA)	5
Rated Short-time Withstand Current - I _{cw} (kA/1s)	5
Rated Uninterrupted Current - I _u (A)	160
Terminal Type	Lug terminals

Physical Attributes

Handle Colour	Black
Handle Material	Plastic
Handle Type	Pistol
Included	Handle, Shaft
Mounting Type	Busbar Mount
Terminal Width (mm)	20

Dimensions

Dimensions (mm)	147W x 140H x 115D
-----------------	--------------------

Protection & Standards

Degree of Protection - Handle	IP65
Pollution Degree	3
Standards and Approvals	IEC 60947-3

Resources

Product catalogue (Flipbook)	Download from here
------------------------------	------------------------------------