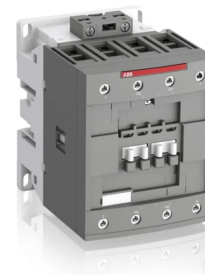


Product No: AF80220013

ABB CONTACTOR 125A AC1 80A AC3 4P2NO2NC 100-250VACDC COIL AF80220013

FEATURES

- Add-on auxiliary contact.
- Built-in surge suppression.
- Reduced panel energy consumption.
- Very distinct closing and opening.
- DIN Rail or panel mounting.



General Information

Brand	ABB
Product Type	AF Contactors

Technical Attributes

Cable Sections - Control Circuit	Flexible with Ferrule 1/2x 0.75 ... 2.5 mm ² Flexible with Insulated Ferrule 1x 0.75 ... 2.5 mm ² Flexible with Insulated Ferrule 2x 0.75 ... 1.5 mm ² Rigid Solid 1/2x 1 ... 2.5 mm ² Rigid Stranded 1/2x 1 ... 2.5 mm ²
Cable Sections - Main Circuit	Flexible with Ferrule 1/2x 6 ... 50 mm ² Flexible with Insulated Ferrule 1/2x 6 ... 50 mm ² Rigid Stranded 1x 6 ... 70 mm ² Rigid Stranded 2x 6 ... 50 mm ²
Clamp Type	Screw Terminals
Coil Consumption	Average Holding Value 50 / 60 Hz 4 V·A Average Holding Value 50 Hz 4 V·A Average Holding Value 60 Hz 4 V·A Average Holding Value DC 2 W Average Holding Value, from Warm State 2 W
Conventional Free-Air Thermal Current - I _{th} (A)	acc. to IEC 60947-4-1, Open Contactors $\theta = 40\text{ }^{\circ}\text{C}$ 125 A
DIN Rail Mounting	TH35-15 (35 x 15 mm Mounting Rail) acc. to IEC 60715
Maximum Breaking Capacity	cos phi=0.45 (cos phi=0.35 for I _e > 100 A) at 440 V 1150 A cos phi=0.45 (cos phi=0.35 for I _e > 100 A) at 690 V 750 A

Maximum Mechanical Switching Frequency	3600 cycles per hour
No. of Main Contacts	2 NO + 2 NC
No. of Poles	4
Rated Control Voltage	50 Hz 100 ... 250 V 60 Hz 100 ... 250 V DC Operation 100 ... 250 V
Rated Frequency (Hz)	50 / 60
Rated Impulse Withstand Voltage (kV)	8
Rated Insulation Voltage	acc. to IEC 60947-4-1 1000 V acc. to UL/CSA 600 V
Rated Operational Current AC-1 (A)	(690 V) 40 °C 125 A (690 V) 60 °C 105 A (690 V) 70 °C 90 A
Rated Operational Current AC-3 (A)	(415 V) 60 °C 80 A (440 V) 60 °C 80 A (500 V) 60 °C 65 A (690 V) 60 °C 49 A (1000 V) 60 °C 25 A (380 / 400 V) 60 °C 80 A (220 / 230 / 240 V) 60 °C 80 A
Rated Operational Power AC-3 (kW)	(415 V) 45 kW (440 V) 45 kW (500 V) 45 kW (690 V) 45 kW (1000 V) 35 kW (380 / 400 V) 37 kW (220 / 230 / 240 V) 22 kW
Rated Operational Voltage AC (V)	Main Circuit 1000 V
Rated Short-time Withstand Current Low Voltage - I _{cw} (A)	at 40 °C Ambient Temp, in Free Air, from a Cold State 10 s 780 A at 40 °C Ambient Temp, in Free Air, from a Cold State 15 min 140 A at 40 °C Ambient Temp, in Free Air, from a Cold State 1 min 300 A at 40 °C Ambient Temp, in Free Air, from a Cold State 1 s 1200 A at 40 °C Ambient Temp, in Free Air, from a Cold State 30 s 450 A
Wire Stripping Length (mm)	10 [Control Circuit] 17 [Main Circuit]

Dimensions

Dimensions (mm) 125.5 * 90 * 116 [H*W*D]

Protection & Standards

Degree of Protection

acc. to IEC 60529, IEC 60947-1, EN 60529 Coil
Terminals IP20

acc. to IEC 60529, IEC 60947-1, EN 60529 Main
Terminals IP10

Standards

IEC/EN 60947-1, IEC/EN 60947-4-1, UL 60947-1, UL
60947-4-1, CSA C22.2 No. 60947-1:22, CSA C22.2
No. 60947-4-1:22