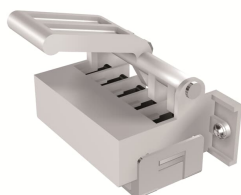


PRODUCT-DETAILS

AUP 5 contacts 24Vdc SX E2.2...E6.2

AUP 5 contacts 24Vdc SX E2.2...E6.2



General Information

Extended Product Type	AUP 5 contacts 24Vdc SX E2.2...E6.2
Product ID	1SDA073765R1
EAN	8015644776985
Catalog Description	AUP 5 contacts 24Vdc SX E2.2...E6.2
Long Description	5 POSITION CONTACTS C.BREAKERS V <(><<>> 24V DC E2.2...E6.2

Circular Value

Conflict Minerals Reporting Template (CMRT)	9AKK108467A5658
Toxic Substances Control Act - TSCA	9AKK108467A8326

Environmental

Environmental Information	9AKK108467A6707
REACH Declaration	9AKK108466A1425
RoHS Information	9AKK108466A1424
RoHS Status	Following EU Directive 2011/65/EU and Amendment 2015/863 July 22, 2019

Ordering

Order Code US and Canada	ZEBAUPED-L
EAN	8015644776985
Minimum Order Quantity	1 piece
Customs Tariff Number	85389099

Dimensions

Product Net Weight	1 kg
--------------------	------

Container Information

Package Level 1 Units	box 1 piece
Package Level 1 EAN	8015644776985

Additional Information

Configuration Type	Loose or configurable
Number of Auxiliary Contacts CO (SPDT)	5
Product Main Type	Accessories for Emax 2
Product Name	Accessory
Product Type	Accessory
Standards	IEC
Suitable For	E2.2, E4.2, E6.2
Suitable for Product Class	SACE Emax 2

Certificates and Declarations

ATEX Certificate	No certification needed
Data Sheet, Technical Information	1SDC200023D0204
Declaration of Conformity - CE	Refer to the EU Declaration of the relative Circuit Breaker
UL Certificate	No certification needed
VDE Certificate	No certification needed
Instructions and Manuals	1SDH001000R0603

Classifications

ETIM 7	EC000041 - Auxiliary contact block
ETIM 8	EC000041 - Auxiliary contact block
ETIM 9	EC000041 - Auxiliary contact block
IDEA Granular Category Code (IGCC)	4743 >> Auxiliary contact block
Object Classification Code	Q
UNSPSC	39121522

WEEE Category

5. Small Equipment (No External Dimension More Than 50 cm)

eClass

V11.1 : 27371302

Categories

Low Voltage Products and Systems → Circuit Breakers → Air Circuit Breakers → Accessories for Emax 2

