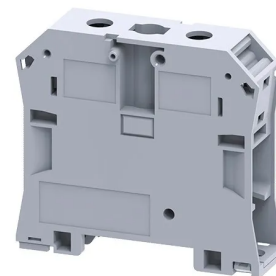


## Product No: CTS50/70NA

### CONNECTWELL TERMINAL BLOCK WITH ALLEN SCREW BLUE 50/70mm<sup>2</sup> CTS50/70NA



#### General Information

Brand	CONNECTWELL
Product Type	Screw Clamp

#### Technical Attributes

Function	Feed Through
Rated Current (A)	192
Rated Voltage (V)	1000
Tightening Torque (Nm)	3

#### Physical Attributes

Cable Entry	Side Entry
Conductor Cross Section - Stranded (mm <sup>2</sup> )	10 - 70
Housing Material	Polyamide
Mounting Type	DIN rail
Screw Size	M6

#### Dimensions

Dimensions (mm)	77.3L X 20.5W X 71.1H
-----------------	-----------------------

#### Protection & Standards

Pollution Degree	3
------------------	---

## Resources

Product catalogue (Flipbook)

[Download from here](#)

---