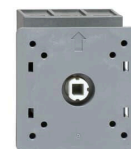


## Product No: OT80FT3

### ABB OT80FT3 SWITCH-DISCONNECTOR OT80FT3

#### FEATURES

- Front operated, 3 pole switch disconnecter
- Door mounted
- Non-fusible disconnect switch with front protected clamp terminals
- Switches operating mechanism on top of the switch
- Degree of protection: Front IP20



#### General Information

Brand	ABB
Product Type	Manual
Suitable For	Distribution Board Installation
Type	Main Switch

#### Technical Attributes

Conventional Free-Air Thermal Current - I <sub>th</sub> (A)	80
Conventional Thermal Current - I <sub>the</sub> (A)	80
Main Circuit Electrical Connection	Screw Connection
Maximum Operational Voltage AC (V)	750
Mode of Operation	Front Operated
No. of Poles	3
Power Loss (W)	4.5/Pole
Product Quantity	10
Rated Impulse Withstand Voltage (kV)	8
Rated Insulation Voltage (V)	750
Rated Operational Current AC-21A 415V (A)	80
Rated Operational Current AC-22A 380-415V (A)	80
Rated Operational Current AC-22A 500V (A)	80
Rated Operational Current AC-22A 690V (A)	80
Rated Operational Current AC-23A 380-415V (A)	75
Rated Operational Current AC-23A 500V (A)	58
Rated Operational Current AC-23A 690V (A)	20
Rated Operational Power AC-23A 380-415V (kW)	37

### Technical Attributes

Rated Operational Power AC-23A 400-415 V (kW)	37
Rated Operational Power AC-23A 500V (kW)	37
Rated Operational Power AC-23A 690V (kW)	18.5
Rated Operational Voltage (V)	750
Rated Short-Time Withstand Current - I <sub>cw</sub> (kA)	1.5
Rated Short-time Withstand Current - I <sub>cw</sub> (kA/1s)	1.5
Rated Uninterrupted Current - I <sub>u</sub> (A)	80
Terminal Type	Screw Terminals

### Physical Attributes

Mounting Type	Door Mount
---------------	------------

### Dimensions

Cable Cross Section (mm <sup>2</sup> )	1.5 - 35
Dimensions (mm)	65W x 72H x 69D

### Protection & Standards

Degree of Protection	IP20
NEMA Degree of Protection	1
Pollution Degree	3
Standards and Approvals	IEC 60947-3 / UL 508 / CSA C22.2 No. 14

### Resources

Product catalogue (Flipbook)	<a href="#">Download from here</a>
------------------------------	------------------------------------