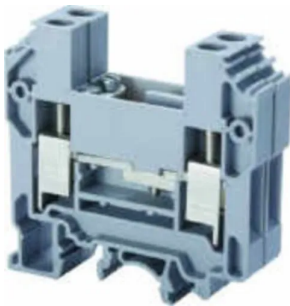


Product No: CDTTUSH

CONNECTWELL DISCONNECT & TEST TERMINAL BLOCK

10.0mm² CDTTUSH



General Information	
Brand	CONNECTWELL
Product Type	Sliding Type
Technical Attributes	
Function	Sliding Type Disconnect and Test
Rated Current (A)	10
Rated Voltage (V)	160
Tightening Torque (Nm)	1.2
Physical Attributes	
Cable Entry	Side Entry
Colour	Grey
Conductor Cross Section - Stranded (mm ²)	1.5 - 10
Housing Material	Polyamide
Mounting Type	DIN rail
Screw Size	M3.5
Dimensions	
Dimensions (mm)	57L X 6W X 59.5H
Protection & Standards	
Pollution Degree	3

Resources

Product catalogue (Flipbook)

[Download from here](#)