
WHITE PAPER

Data center

Energy efficiency and management



Index

002–003	1. Introduction
004–013	2. Energy efficient data center with ABB
006	2.1. Essential data center monitoring solution
007	2.2. Enhanced data center monitoring solution
010	2.3. Advanced data center monitoring solution
014–015	3. Increase the efficiency of the existing data center
014	3.1. High Upgrade: retrofitting of protection devices
014	3.2. Medium upgrade of the installation
015	3.3. Light Upgrade: complete flexibility for the new installation
016–020	4. ABB devices for energy efficiency
016	4.1. Emax 2 and Tmax XT family of circuit breakers and Ekip UP
017	4.2. DPA UPS product line for data centers
018	4.3. System pro M compact® InSite
019	4.4. TruONE ATS
019	4.5. Ekip 3T signalling measurement module
019	4.6. SlimLine XR Gold (XRG)
020	4.7. M4M network analyzer
020	4.8. EQ meters
021	5. References

1. Introduction

Having a highly efficient data center is a very demanding task. Two of the main challenges are: building a highly efficient data center, and having the right degree of information coming from measurements to take the correct action.

Today, data centers consume around 3 percent of the energy produced globally. Some forecasts predict that this figure will reach 20 percent by 2025 ^[1].

Those predictions are driven by the huge growth in data centers, estimated at 50 percent between 2017 and 2023 ^[2].

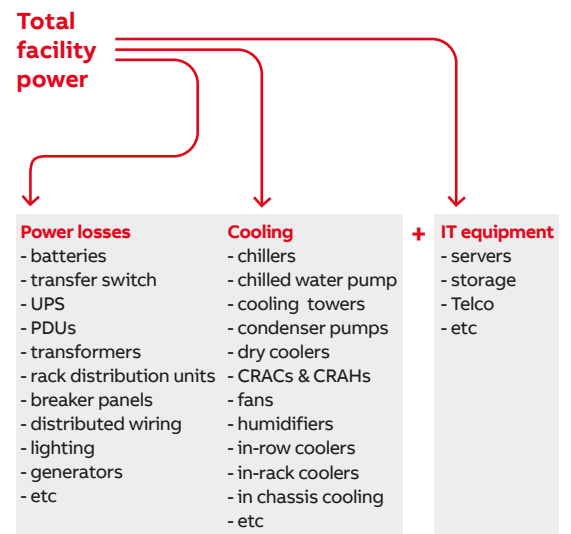
To permit this growth without greatly increasing CO₂ emissions, green and efficient data centers are vital.

The most important parameters defining the energy efficiency of data centers come from

ASHRAE and The Green Grid, entitled Power Usage Effectiveness (PUE) ^[3]. PUE is calculated in the following way:

Data Center PUE
(Power Usage Effectiveness)

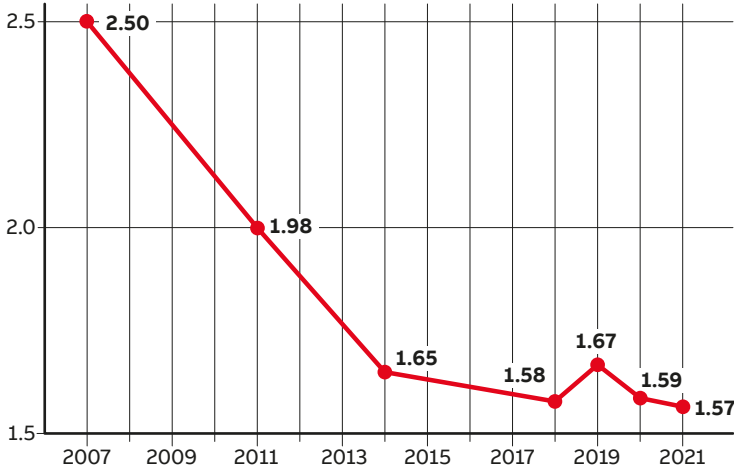
$$\text{PUE} = \frac{\text{Total facility energy}}{\text{IT energy}}$$



According to the study performed by the Uptime Institute, [4] the PUE levels of data centers have been decreasing over the years.

To keep up with this trend, it is necessary to take actions to increase the efficiency of data centers during their operating life.

PUE values fall gradually



Along with this, another very important parameter is the measurement level, which depends on the placement of the measurement devices [5].

Three levels of the PUE measurement

Measurement		Total facility energy	IT equipment energy	Measurement interval
Level 1 (L1) Basic	Required	Utility input	UPS output	Monthly
	Recommended	Utility input	UPS output	Weekly
Level 2 (L2) Intermediate	Required	Utility input	PDU outputs	Daily
	Recommended	Utility input UPS input/output Mechanical inputs	PDU outputs	Hourly
Level 3 (L3) Advanced	Required	Utility input	IT equipment input	15 minutes
	Recommended	PDU outputs	input	15 minutes or less

The EN50600-2-2 standard for data centers requires the measurement of voltage, current, power, energy and power factor to an accuracy of 1 percent.

Additionally, it recommends the measurement of current and voltage total harmonic distortion (TH CD and TH VD) [5].

With this in mind, it is easy to conclude that energy efficiency is not easy, and it is of paramount importance to have the right measurements. These include:

- The right placement of the measuring devices
- High measurement precision
- Fast and simultaneous data acquisition

Finally, the data acquired needs to be analyzed and represented in the right way. Only if all the requirements are satisfied can the owner of the data be sure that the measured PUE value reflects the reality.

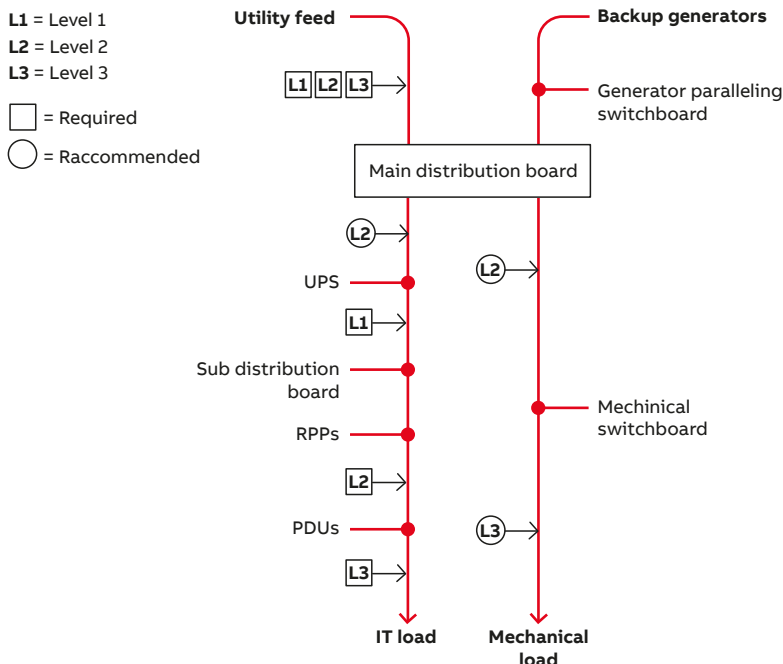
If there is even a small variation in the measured PUE value, the data center owner risks many consequences. Here are some examples:

- It is impossible to correctly measure the data center energy efficiency,
- It is difficult to allocate the power to the IT loads,
- Planning installation upgrade timely and effectively is impossible.

ABB offers a flexible and unique solution that meets all customers' measurement requirements, while ensuring correct, class 1 accuracy measurements.

With the right information, it is easy to have correct power monitoring and capacity planning, and to improve the energy efficiency of a data center.

Placement of the measurement equipment



2. Energy efficient data center with ABB



—
ABB Ability™ Energy
and Asset Manager

Highly efficient ABB devices ensure the highest efficiency for power distribution, including transformers, UPS systems, cables, and protection and switching devices. Thanks to a UPS efficiency of 97.4 percent, highly efficient power supply products and the right power supply design, the usual **20 percent power distribution losses can be cut to just 5 percent.**

For further efficiency increases, ABB offers measurement, monitoring and control solutions. Ekip devices with embedded metering are capable of measuring and controlling all electrical parameters on all distribution levels with high flexibility and class 1 accuracy according to the IEC 61557-12 standard. Having embedded functionalities offers the following advantages:

- No need for additional relays and measurement devices, which provides simplicity and time saving
- High level of flexibility thanks to seven embedded communication protocols
- Simple and effective cloud connectivity (e.g. cloud connection in only ten minutes)

- Increased reliability thanks to fewer devices and connections
- Fast design, installation and integration.

Most important information from the devices can be easily visualized and monitored from the ABB Ability™ Energy and Asset Manager, which provides simplicity and flexibility. Now available as local system or as cloud-based solution.

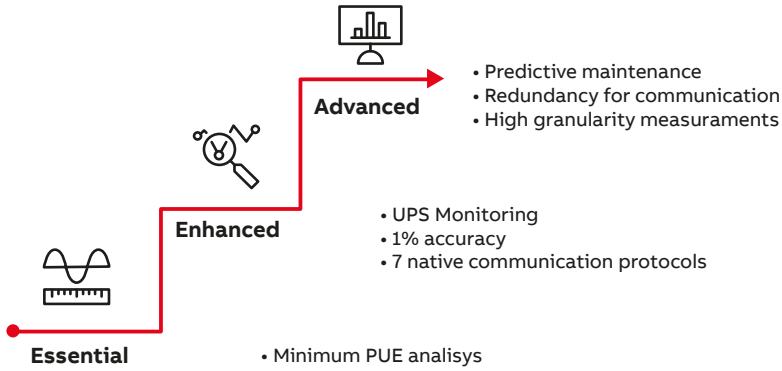
ABB has tailored solutions for any PUE level defined by data center standards, allowing the right data center management to further increase overall energy efficiency.



Intelligent distribution offering for data center

Thanks to modularity of ABB components, it is easy to realize scalable solutions for intelligent distribution of a data center.

To support customers, ABB already pre-defined offering bundles, customers can choose among essential, enhanced, and advanced offering, according to data center type and preferences.



- Minimum PUE analysis
- Essential offering is a basic solution which provides the possibility to monitor the PUE, it might be a perfect solution for small installations.
- Enhanced offer provides a wider view of power consumption, enabling analysis for energy efficiency. It offers also possibility to monitor UPS status.
- Advanced offer consists of complete packaging for metering of consumption and predictive maintenance. It is a package suitable for larger data center.

ABB pre-designed packages provide many advantages:

- Reduce project time up to 80% for project design, package is already defined, it can be simply customized if necessary.
- Reduce project risk, digital connectivity is tested by ABB
- Scalability, the modular design of ABB components ensure adaptability to different projects
- Upgradability, all packages can be upgraded at any time, without need to change hardware, adding advanced functionalities available on ABB marketplace. This can be translated in a reduction of maintenance costs for upgrading electrical system up to 70%.

In table below, you can find a summary of all pre-defined packages available for Data Center Intelligent distribution. According to infrastructure size different digital offering packages are suggested.

Digital Offers		Application Bundles			
Datacenter type	Offer type	Main Distribution Board		Secondary Distribution Board	
Up to 1MW	Larger than 1MW	Incomings	Critical Loads		
Cloud monitoring	Essential	•	•		
	Enhanced	•	•		
	Advanced	•	•	•	
Cloud monitoring + Local control	Essential	•	•		
	Enhanced	•	•		
	Advanced	•	•	•	
SCADA monitoring and control	Ethernet networks	Essential			
		Enhanced			
		Advanced	•	•	•
	Fieldbus networks	Essential			
		Enhanced			
		Advanced	•	•	•
	Ethernet networks redundant Cum Module	Essential			
		Enhanced			
		Advanced	•	•	•
	Fieldbus networks redundant Cum Module	Essential			
		Enhanced			
		Advanced	•	•	•

2. Energy efficient data center with ABB

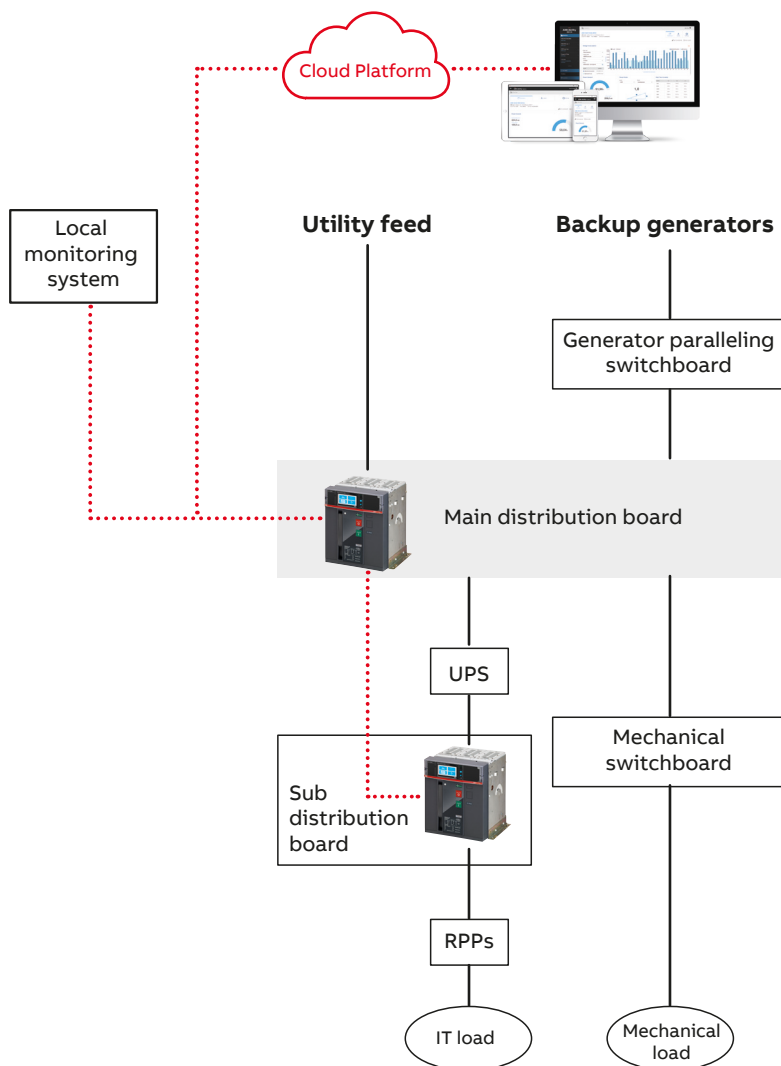


Communication with SACE Emax 2 Air circuit breakers

2.1. Essential data center monitoring solution

To achieve basic level of the measurements, two circuit breakers can be used without any additional measuring device.

Two Emax 2 circuit breakers measure all the electrical parameters (current; voltage; frequency; active, reactive and apparent power and energy;



power factor; peak factor; THVD; THCD) to an accuracy of 0.5 percent (currents, voltages) or 1 percent (power, energy) of the UPS output and the facility input.

The two circuit breakers are connected through the Modbus TCP communication protocol. Modbus TCP communication protocol is available as a cartridge module placed directly on top of the circuit breaker (no additional space and connections are required). The measurements are collected through ABB Ability Edge Industrial Gateway, customer can choose to use the local supervision

system on board on the gateway, or to transfer data to the cloud.

This kind of setup takes less than ten minutes. In case of cloud connectivity, all the information is available from the the new System pro M compact® InSite Energy and Asset Manager cloud platform and accessible from any location and any device with internet access. In addition to the connection to the cloud, it is also possible to connect the measuring devices (circuit breakers) to the local DCIM installed and configured on the premises and to use the available information in a customized way.

ABB Ability™ Energy and Asset Manager computer software enable users to monitor and analyze all the information they need, which are being refreshed every 30 seconds. With the cloud-based version, pre-configured dashboard specifically developed for data center are also available, the users can see all the information about their data center, such as PUE, input and output power, energy trends, peak power, and more.

There is also a high level of flexibility, as the user can adjust the information that is displayed. Additional features available such as control functions, alerts and alarms, scheduled reports, and many more. Finally, if there is a local DCIM supervision system, it is possible to easily fetch data directly from the ABB Ability™ Energy and Asset Manager platform and integrate it into the DCIM system via an API. Included in the cloud-based solution there is also the possibility to access the information from any location of multiple data center sites, it is possible to compare the efficiency of different sites and to take the right steps to improve efficiency.

Although this solution is simple and has a low initial cost, very little information about the energy consumption of the data center is available, since only two measurement points are installed.

Consequently, there is little room for improving the overall efficiency and reliability of the data center.

The added value of energy efficiency can be seen through very low losses of the distribution devices used (e.g. the **UPS has an efficiency of 97.4 percent**). In this way, the power supply losses of a 1 MW data center are cut from the usual 20 percent down to 5 percent, thanks to the highly efficient power supply solution.

2.2. Enhanced data center monitoring solution

In order to get a clear picture of the overall operations of a data center to obtain the right basis for taking action to further improve the energy efficiency and reliability of the data center, the right number and level of measuring devices should be applied.

Taking into account ABBs wide range of devices capable of recording the measurements, monitoring and communication, this becomes an easy task. The devices communicate with each other as well as with any external device to provide unique information to the data center operator.

In this case, the same considerations regarding the measurements, software and communication explained in the previous case can be taken into account.

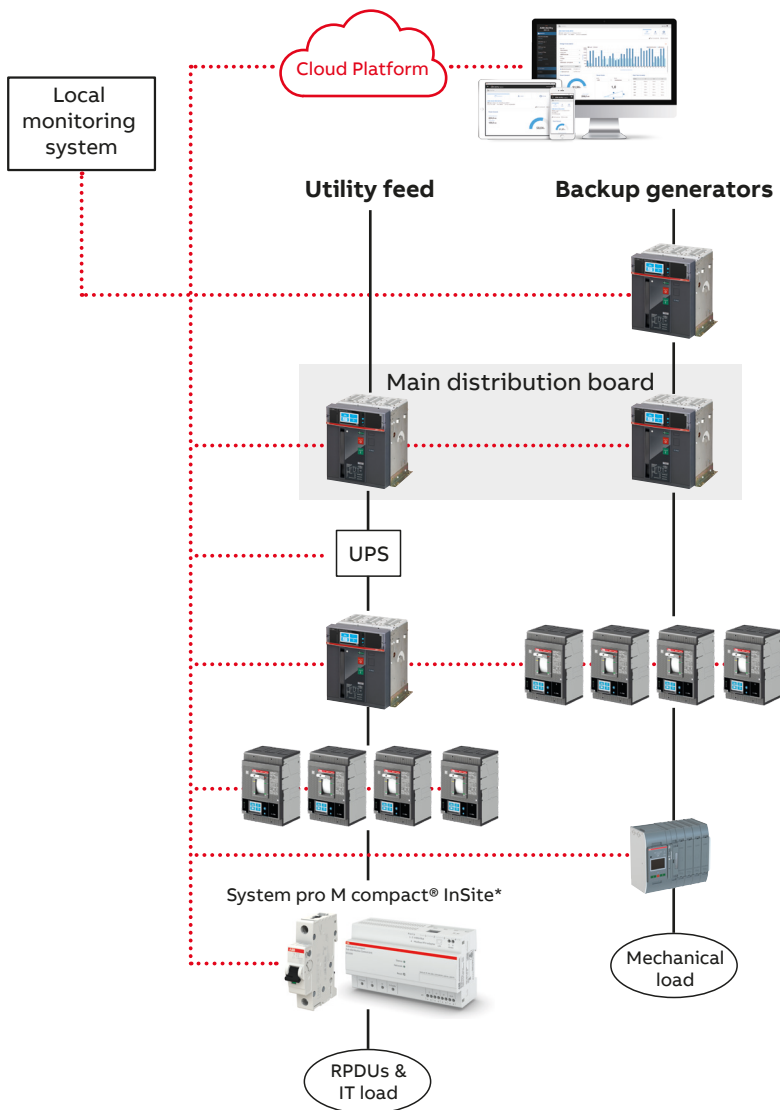
Now, the measurements are performed by all the protection devices and the new System pro M compact® InSite.

As before, the information is available in the cloud and/or locally.

The safety of the data is ensured thanks to the highest possible level of cybersecurity, developed in collaboration with Microsoft. This allows very flexible, easy and precise computation of the PUE value.

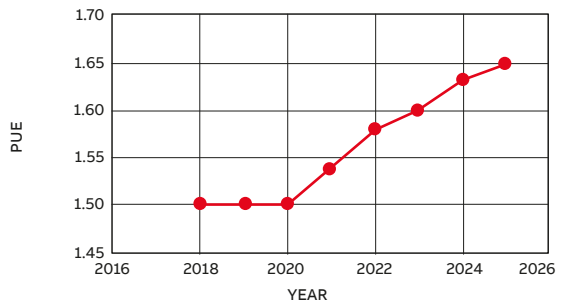
Thanks to the grouping of the load feature, it is possible to customize the plant overview in a fast and flexible manner. For example, all the protection devices protecting the cooling load can be grouped together so that the values of the cooling load consumption can be seen, while keeping the visibility of the individual values as well.

Although data centers are constructed to have the highest energy efficiency, this value can decrease over the years (PUE increases) due to the aging of the equipment and the facility, as well as non-optimal operation. In order to avoid this and to keep up with the trend of decreasing the PUE value, the correct actions should be taken.

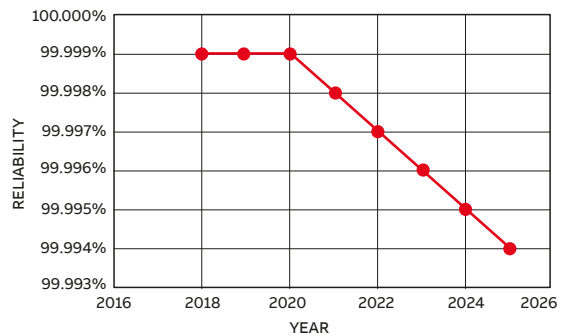


* See page 18 for the complete system.

Yearly data center PUE value without actions taken



Reliability



2. Energy efficient data center with ABB

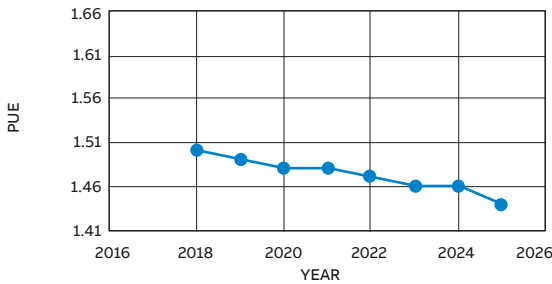


— LV Predictive Maintenance

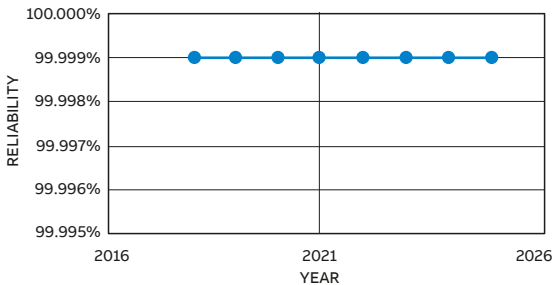
With higher precision, a high number of measurement points, and information about the equipment status, the equipment that consumes the most energy can be easily identified and the correct action can be taken. In this way, it is easy to make cost-effective changes that improve the overall efficiency of the data center.

Additionally, with information about the performance of each piece of equipment in the data center, it is easy to make equipment choices when updating existing data centers, thus truly respecting the concept of modularity.

Yearly data center PUE value with actions taken based on measurements and monitoring



Reliability



Since the measurements are performed on all the equipment, it is very easy to track the energy consumption of any part of the data center.

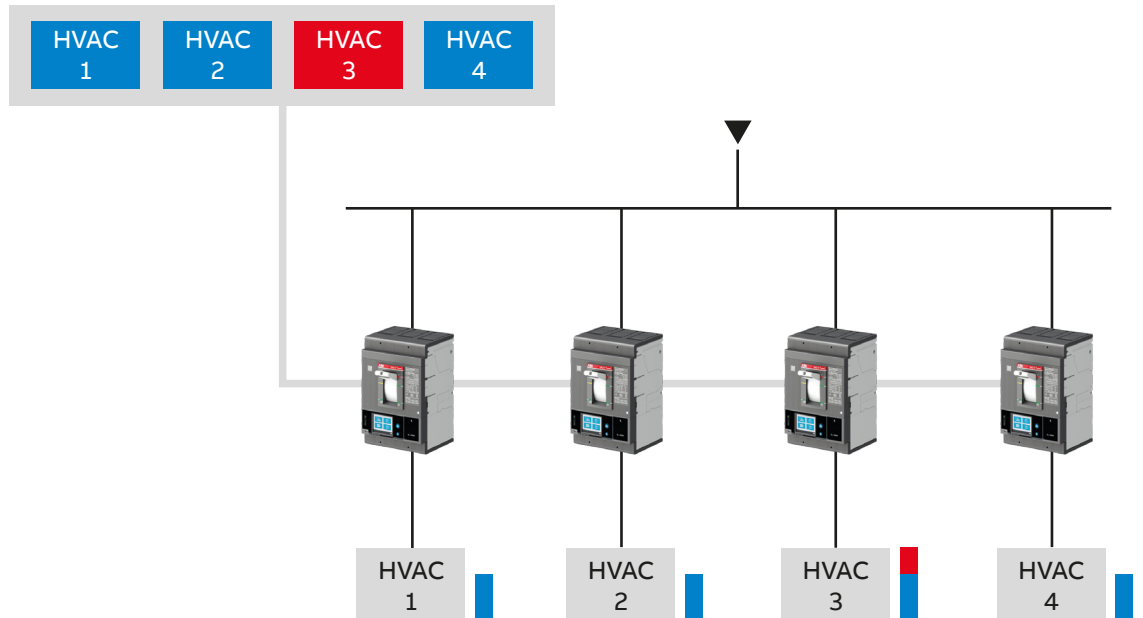
Just by looking at the measurement information, it is easy to see whether some part of the data center is consuming more energy than usual. In this way, any equipment that is not functioning properly can be immediately repaired or replaced, retaining high efficiency.

For example, if there is a hotspot in the data center, the cooling equipment responsible for this part will automatically increase the energy consumption to maintain a stable temperature.

The only way to recognize this kind of issue is by measuring the consumption of every cooling device. Thanks to the precision measurement capabilities of all ABB protection devices from 1 A up to 6,300 A there is no need for special devices or installation to satisfy the previously mentioned requirements.

Thanks to the unique predictive maintenance feature available on air circuit breakers, it is possible to plan maintenance in advance.

If we assume that the maintenance work takes two hours and, and that the circuit breakers have a lifetime of 25 years. In traditional case, the maintenance on ACBs is required each year (25 times during the ACB lifecycle), while, using the predictive maintenance feature this number becomes 9.



In a data center it is not only important to supervise protection devices, but also the monitoring of UPS is essential to guarantee the continuity of service of a data center.

The continuous check of UPS parameters helps to prevent damages to servers and other electronic equipment susceptible to voltage and frequency anomalies.

As well, the check of battery status might reveal failure.

Thanks to UPS Insight it is possible to monitor main UPS parameters such as real time current and voltage, temperature and battery charge status, as well as see all alarms and all events. UPS Insight license can be added to ABB Ability Energy Manager cloud-based solution.

UPS Battery Status



Battery Level
63%

UPS Temperature
27°C

Phase	Input Voltage [V]	Input Current [A]	Input Power [%]
L1	399 v	0 A	No data
L1	400 v	0 A	No data
L1	401 v	0 A	No data

UPS Events

Code	Date	Source	Type
0x1204	04/10/2021- 12:16:01 PM	START MAIN FAULT	Fault
0x5304	10/09/2021- 12:14:03 PM	PLEASE CLOSE BATT SW	Info
0x1204	08/09/2021- 2:55:03 PM	START MAINS FAULT	Fault
0x5304	08/09/2021- 2:55:03 PM	PLEASE CLOSE BATT SW	Info
0x1204	08/09/2021- 12:46:01 PM	START MAINS FAULT	Fault
0x2405	24/08/2021- 3:08:02 PM	K BST. DO NOT OPEN	Warning
0x2404	24/08/2021- 3:08:02 PM	PLL BOOSTER NOT SYNC	Warning
0x2403	24/08/2021- 3:08:01 PM	SYNC PPL BOOSTER OK	Info
0x2402	24/08/2021- 3:08:00 PM	RCT FUSES BLOWN	Fault
0x2401	24/08/2021- 3:08:00 PM	K INPUT CNTRL ERROR	Fault
0x2204	24/08/2021- 3:07:04 PM	MEAS PROCEDURE ERROR	Fault
0x2202	24/08/2021- 3:07:02 PM	MEASURE UDC ERROR	Fault
0x2201	24/08/2021- 3:07:02 PM	GENERAL DC FAULT	Fault
0x2111	24/08/2021- 3:03:05 PM	THY IGBT ERROR	Fault

2. Energy efficient data center with ABB

2.3. Advanced data center monitoring solution

A much more advanced monitoring system is also possible, foreseeing a capillary metering architecture, not limited only to IT loads and mechanical loads, but including also other types of load present in the installation. This advanced solution can be applied for any data center type, regardless the dimensions.

Anyhow it is easy to understand how capillary monitoring is more important larger the data center is, in fact for large and complex data center it is important the possibility to reduce

costs without compromising energy efficiency and reliability of the installation.

Moreover, reliability can be further increased through massive use of intelligent distribution, for example thanks to the unique predictive maintenance feature available on air circuit breakers, it is possible to plan maintenance in advance; if we assume that the maintenance work takes two hours, and that the circuit breakers have a lifetime of 25 years, in traditional case without predictive maintenance, the maintenance on aCBs is required each year (25 times during the aCB life-cycle), while, using the predictive maintenance feature this number becomes 9. Therefore, with predictive maintenance it is possible to get up to 36% reduction cost.

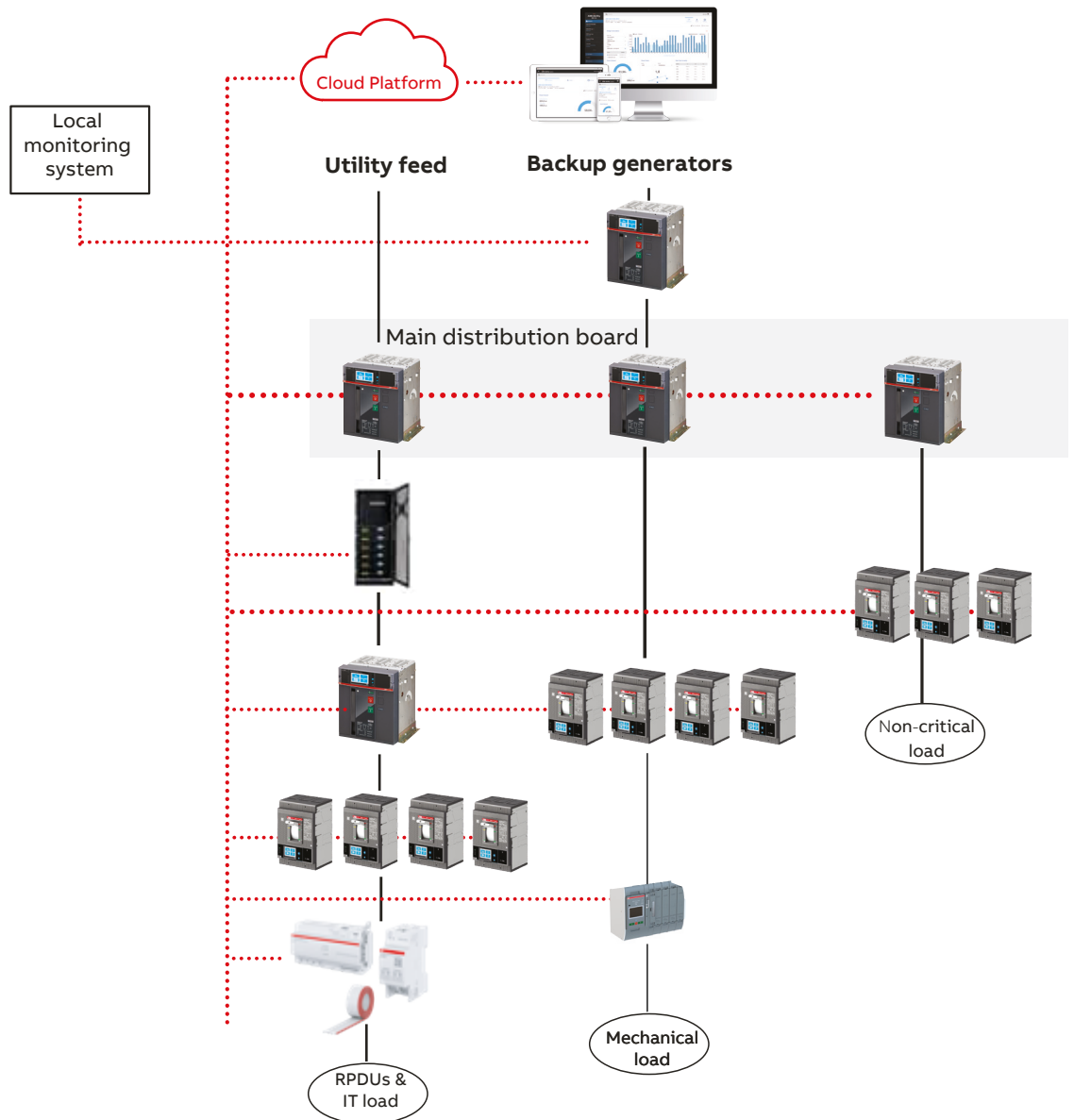




ABB Ability™ Asset Manager

Based on previous information and taking the typical maintenance costs, our calculations show that we can easily save up to 43 percent on the maintenance costs for each device.

This represents only one example about the savings that can be made thanks to predictive maintenance feature.

The previously mentioned values can vary depending on many factors, such as environmental conditions, number of operation and number of short circuit interruptions.

Additionally, with precise details about the health of each device and regular maintenance, the reliability of the whole plant is increasing dramatically, thus avoid the extremely high costs of a data center outage, which can cost as much as \$2.4 million [6].

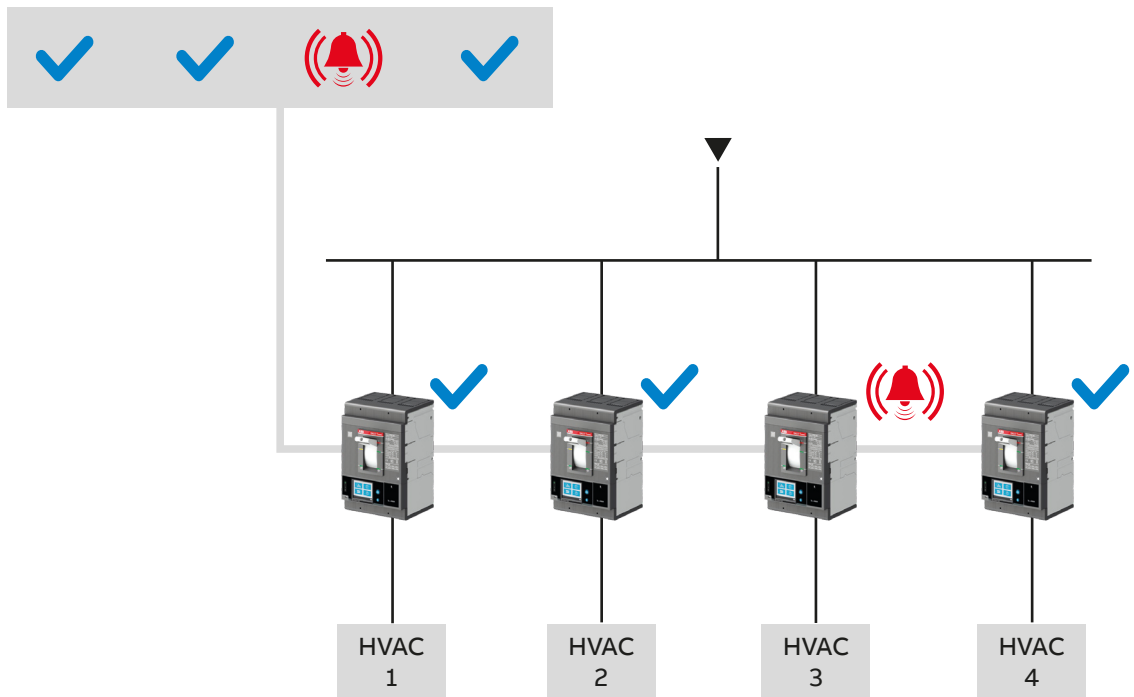
Predictive maintenance is based on the information from the devices (environmental condition,

operating conditions, events and effect of performed maintenance) and a complex algorithm that runs in the cloud through ABB Ability™ Energy and Asset Manager.

Additionally, all the devices continuously perform self-checks. If they detect any abnormal conditions, the device issues an alarm, to ensure the continuity of the operation and increase reliability.

Finally, the customer can set upper and/or lower thresholds for any parameter (e.g. current, voltage, or power) of any device (e.g. circuit breaker or automatic transfer switch (ATS) device), that will automatically trigger alarms.

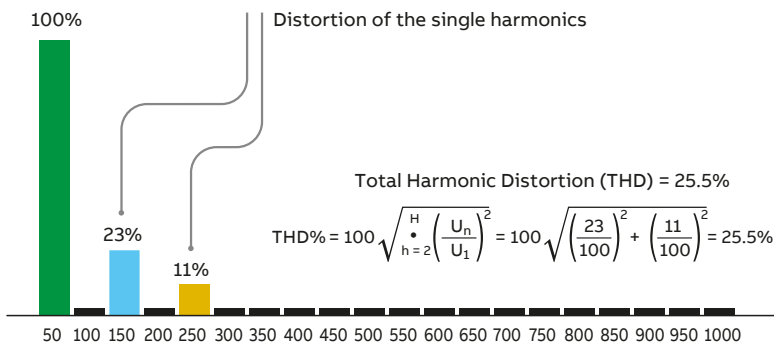
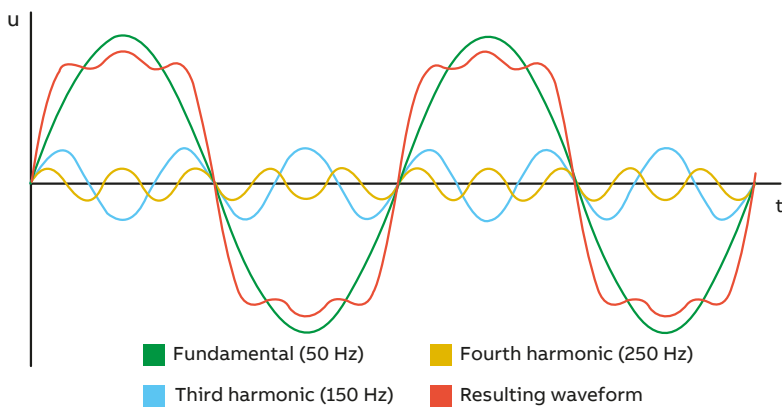
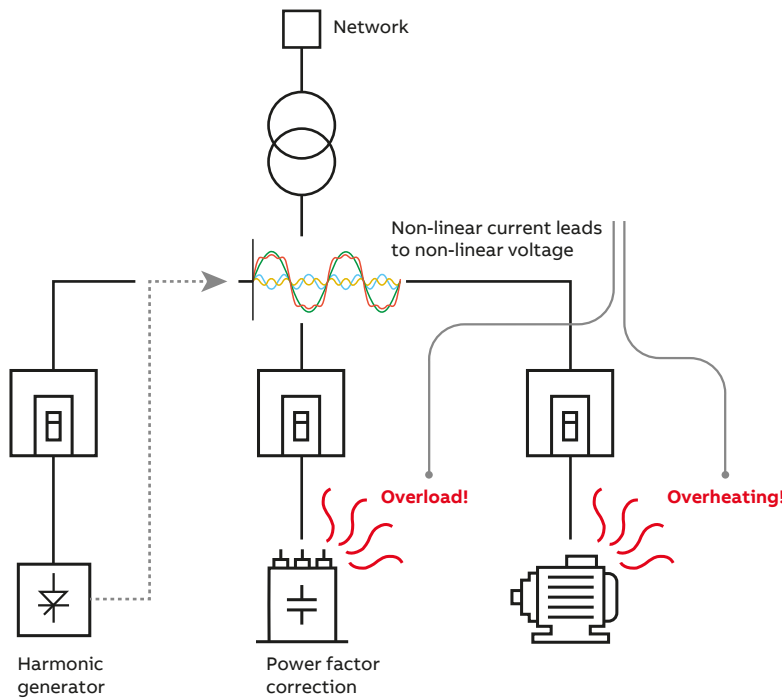
ABB Ability Asset Manager provides predictive maintenance also for medium voltage power distribution.



2. Energy efficient data center with ABB

According to the latest report from Uptime Institute [4], the PUE levels of data centers are decreasing, but there is also a decrease in overall reliability. It is clear that the solutions outlined here can only increase the reliability of data centers, overcoming the issues reported in the study.

Another way to improve the energy efficiency of a data center is to reduce distribution losses.



For all types of data center, ABB offers equipment that can decrease power distribution losses down to 5 percent. Additionally, having a high number of measurement devices provides clear insights into the causes of distribution losses, offering the possibility to optimize the distribution to increase the efficiency. Let's take the example of measuring the losses from the UPS.

A DPA 250 S4 UPS has an efficiency of 97.4 percent; this means that the losses are 2.6 percent. Measuring this value with a low-accuracy device will not provide any useful data. Same UPS high efficiency level is available for different data center size, for example it is possible to rely on MegaFlex DPA UPS for larger data center.

However, thanks to ABB's highly precise devices, it is possible to obtain precise information about distribution losses.

IT equipment installed in data centers can produce power quality issues causing harmonic distortion in the network.

Harmonics will cause additional losses and reliability issues. This can be overcome by placing suitable filters inside the network. However, to correctly select and locate the filters, it is necessary to have the right information about the source and level of the harmonic distortion. ABB equipment can perform measurements up to the 50th harmonic without additional devices, providing the right information and enabling these improvements.

Additionally, the same equipment can monitor other aspects of power quality, such as average voltage, spikes or short interruptions in voltage, voltage imbalances between phases, and other issues, bringing additional increases in energy efficiency and reliability.

ABB's devices have power quality meters embedded, and thanks to this, power quality measurements can be performed at any point of a data center power supply distribution. Some suggested measurement points could be:

- Utility entrance, to monitor the overall power quality
- Power distribution units (PDUs) to recognize which group of IT cabinets is producing the power quality issues.

In this way, the power quality problems could be easily solved.

The mechanical load can consist of power drives, which can also be the source of harmonics; thus, in order to be sure where the issue is coming from, it is advisable to locate power quality measurement devices at the mechanical level. Finally, the power quality can be measured also at the other data center levels, which will give a clear picture of any power quality issues.



Selectivity

For more complex systems, digitalization is useful also to significantly increase resilience and continuity of service, in fact digitalization applied to electrical distribution system can be used to design logic selectivity.



intelligent distribution

Thanks to intelligent relay integrated in protection devices it is possible to automatically isolate a faulty part of the system in the shortest time as possible, while healthy part of the data center continues to work.

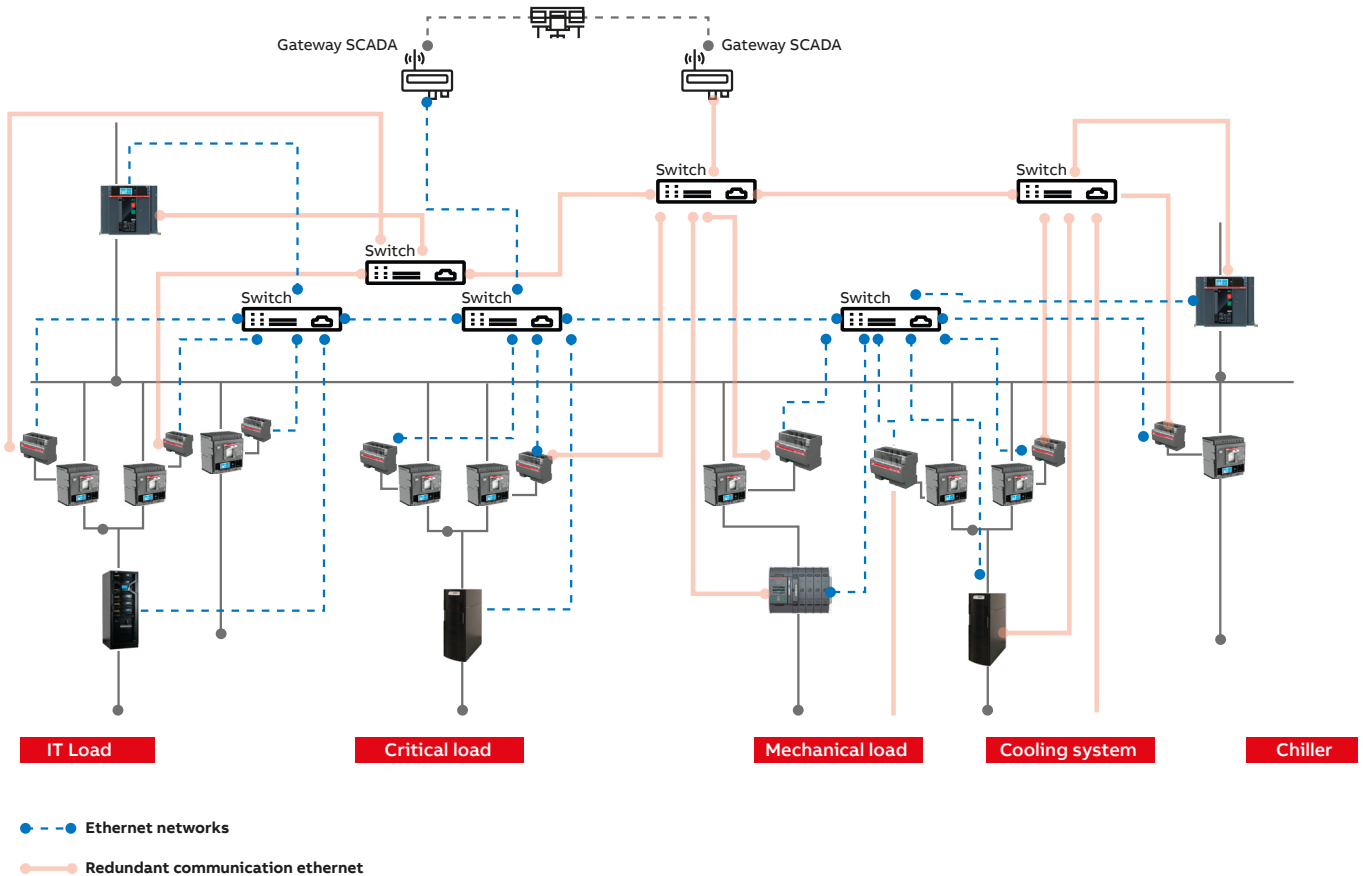


Smart switchgear

Another vantage of ABB Ekip relay is the possibility to have two communication modules mounted on internal or external cartridge. Designers can rely on one primary module and a redundant one or choose two different communication protocols, which can work at the same time.

More information on how to design an electrical switchgear with intelligent capabilities, you can consult ABB Smart Switchgear documents and tools.

For a complete example of standardized data center architecture which includes intelligent distribution solution, you can have a look to "White paper System plus system (2N) electrical distribution - Data Center Design IEC - 0.5 MW IT load design"



3. Increase the efficiency of the existing data center

In one of the latest data center studies ^[7] it is discovered that over next three years, responders said that on average, 12.8 data centers per organization will be renovated.

Adding the previously explained trend about data center efficiency increase, one of the main drivers for data center renovation is energy efficiency. The efficiency increase can justify high data center service cost, which represents around 15% of data center total cost of ownership (TCO) ^[8].

All the previous solutions for data center efficiency increase are explained based on the design of a new data center. However, the same solutions are applicable also for the existing data centers, using the advanced ABB's solution which are allowing the upgrade of the existing installation. ABB has a wide portfolio of the service solutions which can fit any type of installation providing high level of flexibility and ensuring time and cost saving thanks to advanced technologies.

There are three main ways in which the existing installation could be adjusted to apply the solutions explained for new installation.

Depending on how the existing installation is realised and the level of changes the data center owner is willing to apply high, medium or light impact on the installation can be done.

We can summarize ABB offering for smart upgrade and update into 3 packages:

- light upgrade
- medium upgrade
- high upgrade

3.1. High Upgrade: retrofitting of protection devices

In case of retrofitting, the protection devices are completely changed with new devices, which have measurement and connectivity capabilities.



Thanks to ABB's advanced retrofitting solutions, the time needed for upgrading the installation is minimal, thus the availability is maximised.

With the minimal possible impact to the installation the data center is equipped with the newest generation of circuit breakers which have the lowest losses and can perform the class 1 accuracy measurements and connectivity to the both, on sight monitoring system, and ABB Ability™ Energy and Asset Manager. In this way the highest efficiency of a data center is ensured.

3.2. Medium upgrade of the installation

The metering and connectivity capabilities of the protection devices can be "unlocked" without virtually any impact to the existing installation.



Retrofitting



Ekip UP



This is done by using the digital unit called Ekip Up. Thanks to open-style current sensors, Ekip Up ensures a plug&play installation for every low voltage systems. It can be connected to any protection device regardless if it uses the electronic or thermo-magnetic trip unit.

In this way, everything previously explained for the new installation becomes valid also for the existing installation, thanks to the connection of Ekip Up digital units.

Connection of the Ekip Up to the installation not just allows the monitoring and connectivity, but also provides the advance protection functionalities, same ones available with the new protection devices.

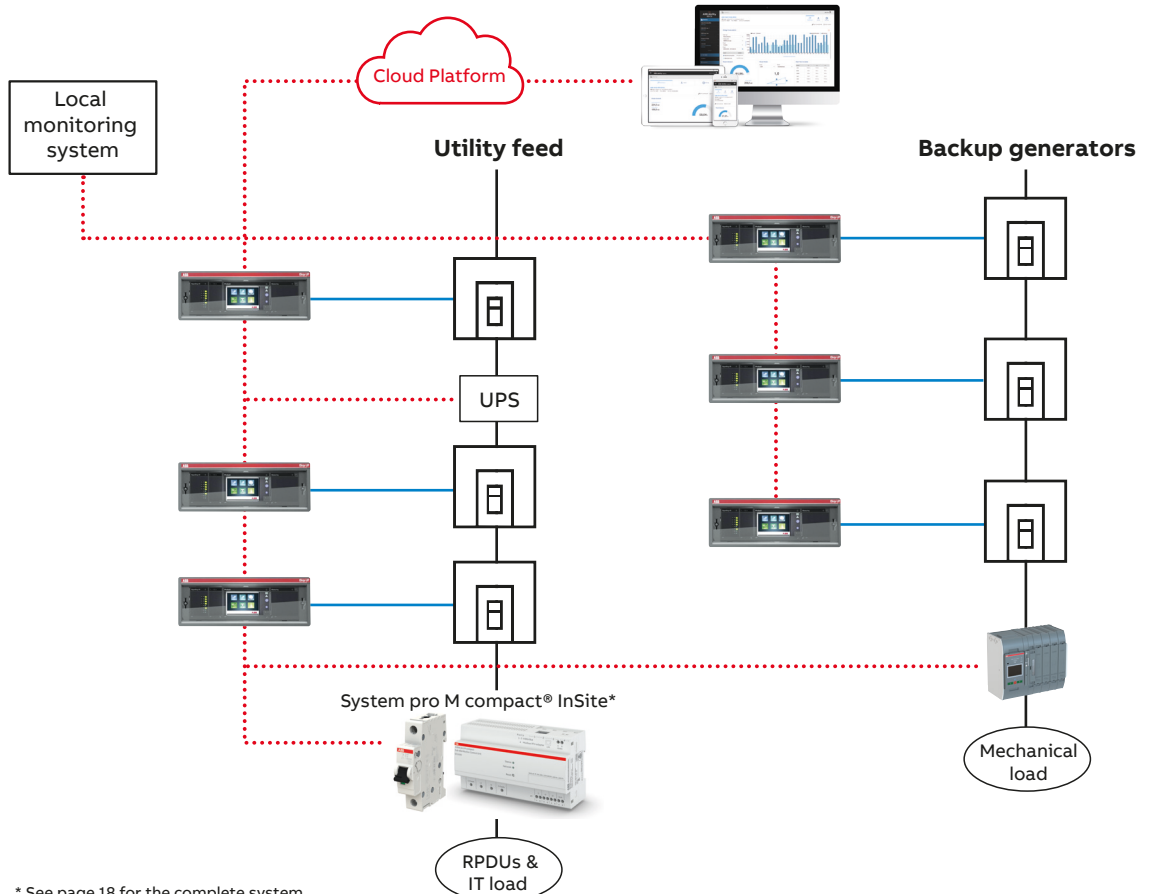
ABB Ability™ Energy and Asset Manager (e.g. predictive maintenance) can be added any time by user itself. In this way, the data center user has the complete flexibility to change or add new functionality any time without any impact.

Plug & Play module



3.3. Light Upgrade: complete flexibility for the new installation

In case where the installation is already equipped with newest devices with measurement capabilities, the adjustments to the installation are possible thanks to device cartridge modules. For example, the data center user can add or change cartridge modules without any impact to the installation. Additionally, new features of ABB



* See page 18 for the complete system.

4. ABB devices for energy efficiency



Circuit breakers

This section presents an overview of the most important ABB devices that can be used for measuring and monitoring inside data centers..

4.1. Emax 2 and Tmax XT family of circuit breakers and Ekip UP

ABB Emax 2 and Tmax XT circuit breakers range from 160A up to 6300A. As well as offering protection functionality, they can be used for measuring and monitoring.

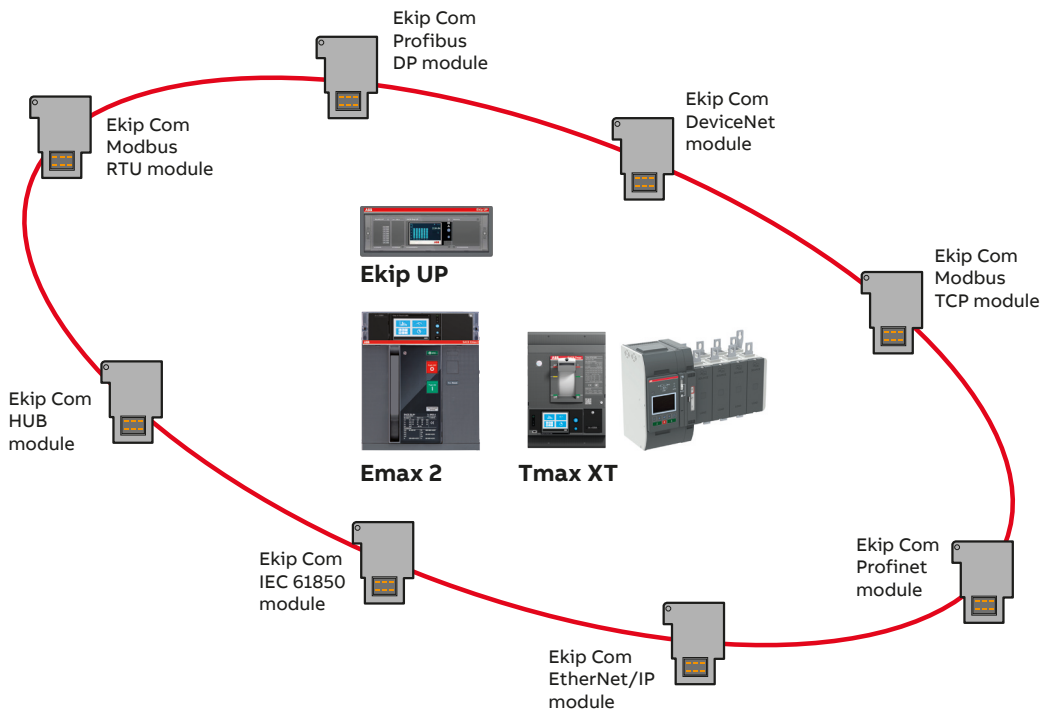
The Ekip Architecture on full range of circuit breakers unlocks high accuracy measurements, embedded in devices, for all electrical parameters (current; voltage; frequency; active, reactive and apparent power and energy; power factor; peak factor; THVD; THCD) to an accuracy of 0.5 percent (currents, voltages) or 1 percent (power, energy).

This includes Class 1 accuracy for power and energy measurements according to IEC61557-12 standard.

In addition, Ekip UP digital unit is designed to upgrade existing installations giving them same capabilities of the Ekip trip units in terms of metering, protection and control.

Thanks to open-style current sensors, Ekip UP ensures a plug&play installation for every low voltage systems.

In order to collect, transfer and monitor the parameters being measured, the Emax 2, Tmax XT and Ekip Up can be equipped with seven different communication protocols.





DPA UPS



DPA 250 S4



MegaFlex DPA

As previously explained, using the Ekip Com Hub module, it is possible to connect to the internet and to have all the information available through the ABB Ability™ Energy and Asset Manager software.

Thanks to all these features, the Emax 2, Tmax XT and Ekip Up devices are perfect for any type of data center, capable of providing all the functionalities that the related standards require.

4.2. DPA UPS product lines for data centers

aBB's Dpa UpS product line is designed to serve the data centers of the future and all the models in the family are built with a focus on energy efficiency, reliability and modularity.

the most recent UpS units – the Dpa 250 S4 and the MegaFlex DPA – have a module efficiency of 97.6 percent and a system efficiency of 97.4 percent. This means that your UPS will use about 30 percent less power, reducing energy losses and operational costs.

The Xtra VFI feature maximizes efficiency under low loads by dynamically adjusting the number of active modules that your critical IT equipment requires.

All DPA models are capable of measuring input voltage, input frequency, battery capacity and autonomy, as well as output voltage, power and current.

Based on these values, the UPS can also send alerts if any of the values are above or below defined limits.



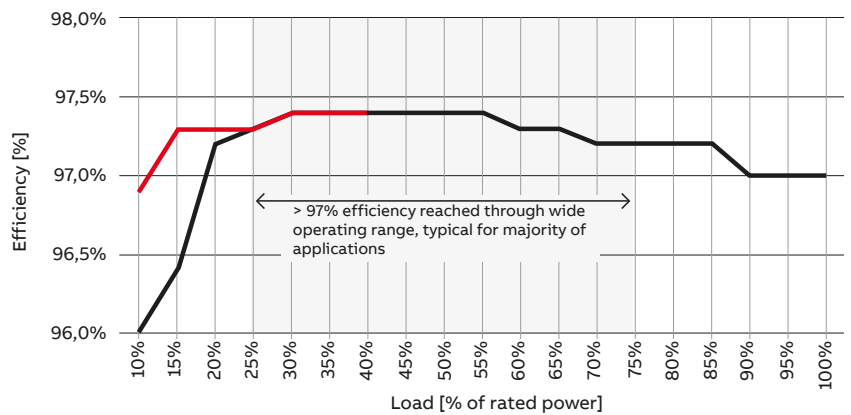
DPA 250 S4

MegaFlex DPA

All this information is available locally, on the DPA display, as well as remotely using the Modbus communication protocol.

Finally, for DPA 250 S4 all those measurements are also available in the cloud through ABB Ability™ Energy and Asset Manager.

— Double conversion mode
— Xtra VFI mode



Xtra VFI - double conversion mode increases efficiency when load is low

4. ABB devices for energy efficiency



System pro M compact® InSite

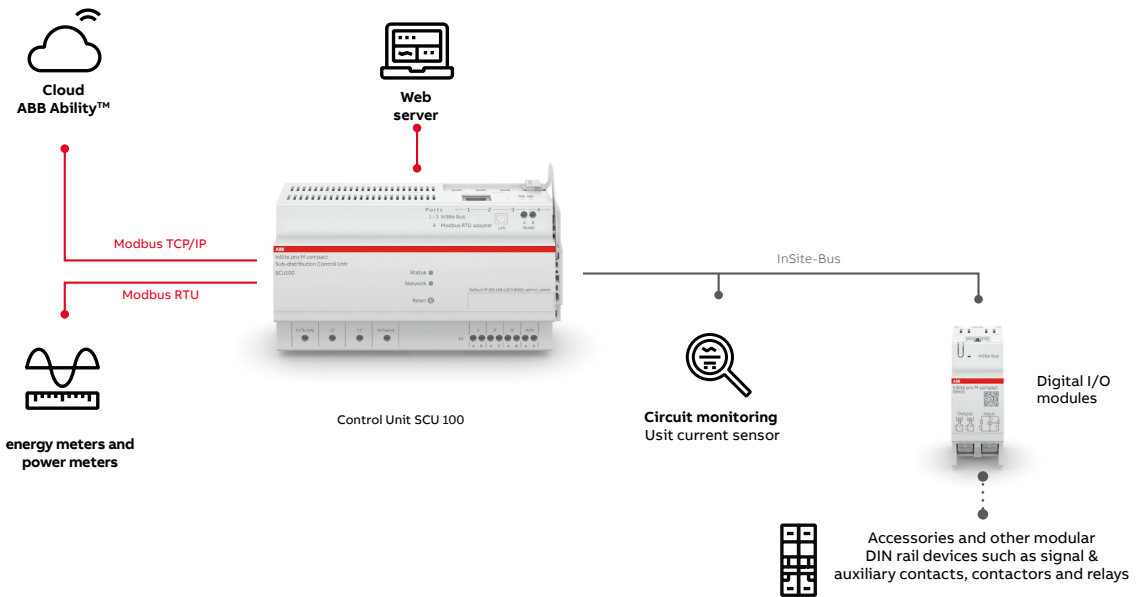
4.3. System pro M compact® InSite

The System pro M compact® InSite allows measurement of currents up to 160 A. It consists of a control unit and sensors, allowing easy monitoring of all data center distribution lines. It measures current, voltage, power factor,

THD (U, I), energy and power to an accuracy of 1-2 percent.

The measurement devices can be easily fitted into the electrical circuit in any location where the measurement is to be performed.

The system uses an open-loop Hall-effect sensor or the giant magneto-resistance (GMR) effect, depending on the sensor used.



There are three different devices that can be used for these measurements:

Sub distribution control unit	Technical feature	Unit	Description
	Supply voltage	[VAC]	80-277 (L1-N, +5%)
	Frequency	[HZ]	50/60
	Power input (L1-N)	[W]	5...45 depending on number of sensors and I/O modules
	Power input , current transformer, secondary side	[VA]	Current circuit <2 (per phase)
	Voltage measurement range	[VAC]	80-277 (L1, L2, L3-N)
	Measurement range, current transformer, secondary side	[A]	nominal: 5 max: 6
	Hramonic component	[HZ]	up to 2000
	Data rate of Modbus RTU	[BAUD]	RS485 2- wire, 2400...115200
	Refresh time		1sec / 30 sec (depending on type of data)
	Data storage and export		Integrated 1-year data storage Automatic CSV data export

Any of these devices can easily be connected through the unique bus to the SCU100, which can be placed on the DIN rail. This unit allows storage and transfer of data through many different protocols and/or to the ABB Ability Energy and Asset Manager using the Modbus TCP communication protocol.

Input and Output module	Technical feature	Unit	Input module DM11	Output module DM00	Input and Output module DM10
	Number of digital channels		4 Input	4 Output	2 Input + 2 Output
	Voltage (min-max)		active input: 22-26 Vdc	relay output: 5Vdc-240Vac	active input: 22-26Vdc relay output: 5Vdc-240Vac
	Current (min-max)		active input 4mA	relay output: 5mA-2.5A Max 4,5A (<5sec)	active input: 4mA relay output: mA-2.5A Max 4,5A (<5sec)
	Pulse minimum duration	[MS]	5	n/a	5
	Pulse frequency	[Hz]	100	n/a	100
	Terminals cross section	[MM2]	2,5	2,5	2,5



TruONE ATS

4.4. TruONE ATS

The new TruONE is the world's first true all-in-one automatic transfer switch, engineered to incorporate switch and controller in one seamless unit. It has a range between 200 A and 1600 A and the possibility to provide a variety of measurements.

With level 4 controls, the TruONE is capable of measuring currents, voltages, active, reactive and apparent power and energy, THVD, and THCD. As with the Emax 2, Tmax XT and Ekip UP, the TruONE can be equipped with communication modules in order to send data to remote locations and the ABB Ability™ Energy and Asset Manager.

The available communication protocols are: Modbus RTU, Modbus TCP, PROFIBUS, PROFINET, Ethernet/IP, and DeviceNet.



SlimLine XR Gold (XRG)

4.5. Ekip 3T signalling measurement module

The Ekip Signalling 3T module makes it possible to measure and monitor environmental conditions.

The module can be directly placed on the circuit breaker and digital units (in the same way as the communication modules).

This module has three inputs for PT1000 temperature measurement sensors and one analog input of 4–20 mA that various sensors can be attached to. The information from those sensors gives precise environmental information for predictive maintenance.

Additionally, this information is available remotely, using one of the communication protocols above and/or through the ABB Ability™ Energy and Asset Manager computer software.

Possible locations for the temperature measurement sensors include the busbar system, distribution board, and transformer, as well as environmental measurements. The analog input can be used, for example, for measuring humidity.



4.6. SlimLine XR Gold (XRG)

The SlimLine XR Gold (XRG) switch disconnecter fuse with ratings between 63 A and 630 A fulfils all increasing demands in the industry for safe energy distribution.

As with circuit breakers, the SlimLine XR Gold (XRG) is capable of monitoring fuse status, voltages, currents, active and reactive power, power factor, energy, temperature, fuse status, and switch position.

It is equipped with the Modbus RTU communication protocol, which allows easy integration with monitoring systems and/or the ABB Ability™ Energy and Asset Manager.

Additionally, SlimLine XR Gold (XRG) offers an integrated motor (as option) for remote or local operation. The motor operation unit is 100% integrated inside the SlimLine XR Gold (XRG).



4. ABB devices for energy efficiency



M4M

4.7. M4M network analyzer

The new M4M network analyzer range provides accurate real-time monitoring of the power quality KPIs to enhance reactivity to the events on the electrical system, helping to avoid any operational impact and uncoordinated maintenance.

Available in two families, M4M 20 and M4M 30 ensure Class 0,5 accuracy according to IEC 61557-12 and IEC 62053-22 standards, representing the perfect choice for submetering inside sub-distribution boards and power quality monitoring in main distribution boards and power centers.

In data centers, M4M allows to fully monitor power quality and power reliability, easily detecting where harmonics are created and preventing damages to installed equipment.



EQ Meters support a wide voltage range as well as a wide temperature range.

They can also be equipped with built-in serial communication interfaces for M-Bus or Modbus RTU (RS-485).

The range comprises direct and indirect, one and three phase meters up to 80A; they support reading a wide range of values such as active, reactive and apparent power, current, voltage, frequency, power factor and harmonics.



4.8. EQ meter

ABB's EQ meters are high-performance, modular DIN rail-mounted electricity meters that are safe, easy to install and can be integrated with existing and future electrical installations.

They are designed to fulfill any type of sub-metering requirement. MID-approved EQ meters are certified and have verified meter accuracy, which is a critical factor in establishing fairness in cost allocation.

The low rated or base currents of these products ensures high dynamic performance with superior accuracy even at low currents.

5. References

-
- [1] J. M. Lima, "Data Centres Of The World Will Consume 1/5 Of Earth's Power By 2025," Data-Economy, 12 December 2017. [Online]. Available: <https://data-economy.com/data-centres-world-will-consume-1-5-earths-power-2025/>. [Accessed 17 January 2019].
-
- [2] UpTime, "Bright TALK," UpTime, 28 November 2018. [Online]. Available: https://www.brighttalk.com/webcast/14219/340820?utm_campaign=outlook-calendar&utm_medium=calendar&utm_source=brighttalk-embed. [Accessed 8 December 2018].
-
- [3] The Green Grid Association and ASHRAE, PUE: A Comprehensive Examination of the Metric, Atlanta, GA: ASHRAE Datacom Series, Book 11, 2014.
-
- [4] R. Ascierio, "Uptime Institute Global Data Center Survey," Uptime Institute, 5470 Shilshole Avenue NW, Suite 500 Seattle, WA 98107 USA, 2018.
-
- [5] Information technology — Data centre facilities and infrastructures — Part 2-2: Power distribution, EN 50600-2-2 Standard, 2014.
-
- [6] Ponemon Institute, Cost of Data Center Outages, Ponemon Institute, 2016.
-
- [7] B. Kleyman, "State of the Data Center Industry, 2018 – Where We are and What to Expect," Data Center Knowledge, 2018 03 2018. [Online]. Available: <https://www.datacenterknowledge.com/afcom/state-data-center-industry-2018-where-we-are-and-what-expect>. [Accessed 04 02 2019].
-
- [8] APC, Determining Total Cost of Ownership for Data Center and Network Room Infrastructure, American Power Conversion, 2005.
-



—
ABB S.p.A.
Electrification Business Area
Smart Power Division
5, Via Pescaria
I-24123 Bergamo - Italy
Phone: +39 035 395.111
new.abb.com/low-voltage

We reserve all rights in this document and in the subject matter and illustrations contained therein. Any reproduction or utilization of its contents – in whole or in part – is forbidden without prior written consent of ABB. ©2021 ABB. All rights reserved

We reserve the right to make technical changes or modify the contents of this document without prior notice. With regard to purchase orders and/or contracts, the agreed particulars shall prevail. ABB does not accept any responsibility whatsoever for potential errors or possible lack of information in this document.