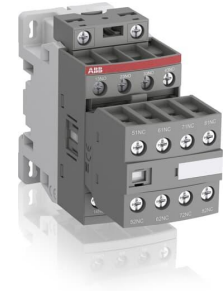


## Product No: NF62E13

### ABB NF62E-13 100-250V50/60HZ-DC CONTACTOR RELAY NF62E13

#### FEATURES

- AF technology enables operation within a broad voltage spectrum
- Efficient built-in surge suppression
- Block type design easily extended with add-on auxiliary contacts
- Mechanically-linked auxiliary contacts compliant with IEC standards



#### General Information

|              |                    |
|--------------|--------------------|
| Brand        | ABB                |
| Product Type | NF Contactor Relay |

#### Technical Attributes

|   |  |
|---|--|
| Actuating Voltage Type                    | AC/DC                                  |
| Auxiliary Contacts                        | 6NO+2NC                                |
| Connection Type                           | Screw Connection for Auxiliary Circuit |
| No. of Normally-closed Auxiliary Contacts | 2                                      |
| No. of Normally-open Auxiliary Contacts   | 6                                      |
| No. of Poles                              | 8                                      |
| Operating Voltage AC (V)                  | 690                                    |
| Rated Control Circuit Voltage AC (V)      | 100 - 250                              |
| Rated Control Circuit Voltage DC (V)      | 100 - 250                              |
| Rated Control Supply Voltage AC (V)       | 100                                    |
| Rated Control Supply Voltage DC (V)       | 100                                    |
| Rated Impulse Withstand Voltage (kV)      | 6                                      |
| Rated Insulation Voltage (V)              | 690                                    |
| Rated Operational Current (A)             | 3                                      |
| Rated Operational Current AC-15 400V (A)  | 3                                      |
| Rated Operational Voltage AC (V)          | 690                                    |
| Rated Supply Voltage AC (V)               | 100                                    |
| Terminal Type                             | Screw Terminals                        |

### Physical Attributes

|                                    |                  |
|------------------------------------|------------------|
| Mounting Type                      | DIN Rail / Screw |
| Operational Temperature Range (°C) | -40 to +70       |
| Storage Temperature (°C)           | -60 to +80       |

### Dimensions

|                 |                    |
|-----------------|--------------------|
| Dimensions (mm) | 45W x 86H x 110.5D |
|-----------------|--------------------|

### Protection & Standards

|                      |      |
|----------------------|------|
| Degree of Protection | IP20 |
|----------------------|------|