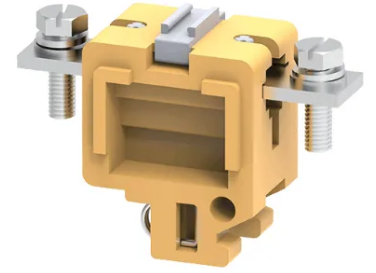


Product No: CTS35LS

CONNECTWELL 35mm 2 BUS BAR TYPE (TAP SCREW) TERMINAL BLOCK MELAMINE CTS35LS

FEATURES

- These Terminal Blocks are preferred for applications using wires of a large cross section
- The wire is crimped to a ring / fork type lug
- CTS35LS Terminal Blocks have a threading in the current bar, eliminating the need of locking nuts
- Partition / Isolation Plate must be used with every Terminal Block
- The Protective Cover is designed to be mounted on a specially designed slot in the Partition Plate.



General Information

Brand	CONNECTWELL
Product Type	Bus Bar Lug

Technical Attributes

Mode of Operation	Feed Through
Rated Current (A)	150
Rated Voltage AC/DC (V)	1000
Surge Voltage (kV)	8
Tightening Torque (Nm)	3

Physical Attributes

Material	Melamine
----------	----------

Protection & Standards

Pollution Degree	3
------------------	---