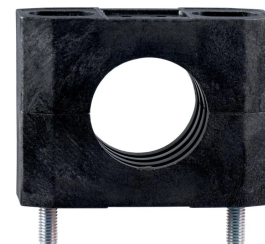


Product No: 101068520

SCHMERSAL MOUNTING CLAMP THERMOPLASTIC 101068520

Note: To each SD junction box, 2 (optionally 3) components can be connected.



General Information

Brand	SCHMERSAL
Cable Note	All indications including the conductor ferrules.
Coding Level According to EN ISO 14119	Low
EAN	4030660000000
eCl@ss Number, Version 11.0	27-27-06-01
eCl@ss Number, Version 9.0	27-27-06-01
ETIM 6.0	EC002714
ETIM 7.0	EC001487
Housing Construction Form	Cylinder thread
Product Type	Accessory
Protection Class of Operating Resource	3
Recommended Actuator	AZ/AZM201-B1 AZ/AZM201-B30
Recommended Safety Switchgear	SRB-E-301ST SRB-E-201LC
Working Principle	Mechanical

Technical Attributes

No. of Auxiliary Contacts	1
Actuating Torque (Nm)	0.15
Assured "OFF" Switching Distance (mm)	15 16 18
Assured "ON" Switching Distance (mm)	10 13 8
Contact Material	Silver
Design of Control Element	Short-circuit proof, p-type

Integral System Diagnostics Status	Yes
Latching Force (N)	30
Maximum Actuating Speed (m/s)	1
Maximum Bounce Duration (ms)	3
Maximum Cable Cross Section (mm ²)	2.5
Maximum Electrical Power Consumption (W)	8.5
Maximum Fuse Rating	16 A gG D-fuse
Maximum Holding Force (N)	2600
Maximum Switching Capacity (W)	0.24
Minimum Actuating Force (N)	17
Minimum Actuating Speed (mm/min)	60
Minimum Cable Cross Section (mm ²)	0.75
Minimum Mechanical Life	10000000 Operations
Minimum Positive Break Force (N)	40
No. of Actuating Directions	3
No. of Cable Wires	6
No. of Normally-open Contacts	2
No. of Safety Contacts	2
Overvoltage Category	3
Positive Break Travel (mm)	10
Rated Impulse Withstand Voltage (kV)	4
Rated Insulation Voltage (V)	400
Rated Operating Current (mA)	1000
Rated Short-circuit Current (A)	1000
Resistance to Shock (g/ms)	30 / 11
Switching Element	Opener (NC)
Switching Principle	Slow action
Terminal Type	Flat plug-in connector 4.8 mm
Thermal Test Current (A)	16
Utilisation Category	DC-13 AC-15

Physical Attributes

Actuator Type	Magnet
Cable Entry	1x M20
Enclosure Coating Material	Painted
Enclosure Material	Glass-fibre, thermoplastic
Gross Weight (g)	60
Installation Conditions	Arbitrarily
Material of The Cable Mantle	LiYY
Maximum Ambient Temperature (°C)	80
Minimum Ambient Temperature (°C)	-20
Mounting Type	Can be clipped into standard rail
Net Weight (g)	4.167
Roller Material	Plastic
Storage Temperature (°C)	-25 to 70
Wire Cross-Section	0.25 mm

Dimensions

Cable Length (m)	10
Depth (mm)	121
Height (mm)	27
Sensor Height (mm)	92
Sensor Length (mm)	63
Width (mm)	10

Protection & Standards

Degree of Protection	IP54
Pollution Degree	2
Standards	EN IEC 60947-5-2 / DIN VDE 0660-208

Resources

Product catalogue (Flipbook)	Download from here
------------------------------	------------------------------------