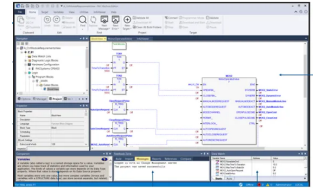


Product No: ME100MBP001

EMERSON PAC MACHINE ED PRO 700CPE3/400CPU +QP W/ 1YR SUPPORT NEEDS USER REGISTRATION ME100MBP001

FEATURES

- Configures and monitors execution of logic on PACSystems RX3i-RX7i targets..
- Control Runtime.
- Process Block Library.
- Configures and monitors execution of logic on PACSystems RSTi-EP targets.
- Configures and monitors execution of logic on VersaMax targets.
- Configures remote VersaMax and Series 90-30 I/O.
- Configures and monitors execution of panels on Quick Panel and Quick Panel+.
- View Development.
- PC Control Development.
- View Runtime.
- Supports OPC UA Non-Transparent Server Redundancy.



General Information

Brand	EMERSON
Product Type	Software
Suitable For	PACSystems, VersaMax, RSTi-EP and QuickPanel devices.

Resources

Product catalogue (Flipbook)	Download from here
------------------------------	------------------------------------