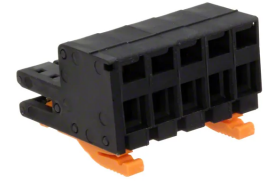


Product No: TB100005

RED LION PLUG IN TERMINAL BLOCK 5 POSITION TB100005

FEATURES

- Dual Preset Timer with Dual Relay Outputs
- DC Powered device
- Size: 1/16 DIN standard for panel mounting
- Display: 2 Line, 6 Digit LCD with backlight options
- Main Display digits are 0.3" high; Secondary Display digits are 0.2" high
- AC Power version: Accepts 85 to 250 VAC, consumes a maximum of 9 VA
- DC Power version: Accepts 18 to 36 VDC, consumes a maximum of 5.5 W; also accepts AC power at 24 VAC +/-10%
- Memory retention through Nonvolatile E2PROM technology
- Multiple output types including Solid-State (NPN and PNP Open Collector) and Relay outputs



General Information

Brand	RED LION
Product Type	Accessory
Series	C48T

Technical Attributes

No. of Positions	5
Nominal Power (W)	5.5
Rated Maximum Operational Voltage AC (V)	24
Rated Maximum Operational Voltage DC (V)	36
Rated Minimum Operational Voltage DC (V)	18

Physical Attributes

Maximum Temperature (°C)	50
Minimum Temperature (°C)	0

Protection & Standards

Degree of Protection

IP65

Resources

Product catalogue (Flipbook)

[Download from here](#)
