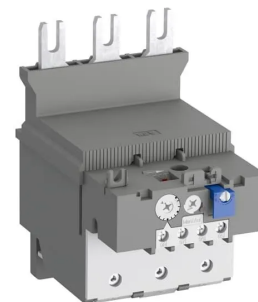


Product No: TF140DU-142

ABB TF140DU-142 THERMAL OVERLOAD RELAY 110 ... 142 A TF140DU-142

FEATURES

- Economic electromechanical protection device for the main circuit
- Reliable and fast protection for motors in the event of overload or phase failure
- Trip class 10 device
- Temperature compensation
- Automatic or manual reset selectable
- STOP function and a trip indication



General Information

Brand	ABB
Product Type	Thermal Overload Relay
Suitable For	AF116 - AF140

Technical Attributes

Auxiliary Contacts	1NO/1NC
Current Setting Range (A)	110
Main Circuit Electrical Connection	Screw Connection
Maximum Operational Voltage AC (V)	690
No. of Auxiliary Change-over Contacts	1
No. of Normally-closed Auxiliary Contacts	1
No. of Normally-open Auxiliary Contacts	1
No. of Poles	3
Rated Frequency (Hz)	50/60
Rated Impulse Withstand Voltage (kV)	8
Rated Insulation Voltage (V)	690
Rated Operational Voltage AC (V)	690
Release Class	Class 10 A
Reset Function	Automatic

Thermal Current Setting Range (A)	110 - 142
-----------------------------------	-----------

Trip Class	10
------------	----

Physical Attributes

Mounting Type	Direct Attachment
---------------	-------------------

Dimensions

Dimensions (mm)	89W x 140H x 126D
-----------------	-------------------

Protection & Standards

Degree of Protection	IP20 (Housing)
----------------------	----------------

Pollution Degree	3
------------------	---

Resources

Product catalogue (Flipbook)	Download from here
------------------------------	------------------------------------