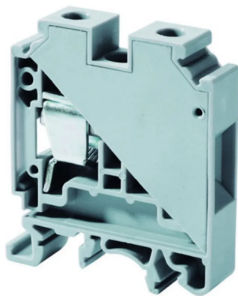


Product No: CTS25UN

CONNECTWELL CTS25UN STANDARD FEED THROUGH SCREW
CLAMP TERMINAL BLOCK 4-25mm² 1000 V/101A



General Information	
Brand	CONNECTWELL
Product Type	Screw Clamp
Technical Attributes	
Rated Current (A)	101
Rated Voltage (V)	1000
Tightening Torque (Nm)	2
Physical Attributes	
Colour	Grey
Conductor Cross Section - Stranded (mm²)	4 - 25
Mounting Type	DIN Rail
Screw Size	M5
Dimensions	
Dimensions (mm)	49L x 12W x 57.2H
Resources	
Product catalogue (Flipbook)	Download from here