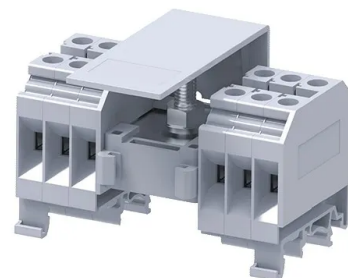


Product No: CDB6/3

CONNECTWELL CDB6/3 DISTRIBUTION TERMINAL BLOCK 1.5-6mm²



General Information

Brand	CONNECTWELL
Product Type	Distribution

Technical Attributes

Rated Current (A)	100 (Input)/82 (Output)
Rated Voltage (V)	800
Tightening Torque (Nm)	3 (Input)/0.8 (Output)

Physical Attributes

Colour	Grey
Conductor Cross Section - Stranded (mm ²)	1.5 - 6
Mounting Type	DIN Rail
Screw Size	M3.5

Dimensions

Dimensions (mm)	80L x 48W x 43H
-----------------	-----------------

Resources

Product catalogue (Flipbook)	Download from here
------------------------------	------------------------------------