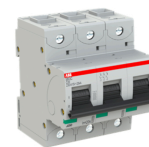


## ABB S803CC20 HIGH PERF. MCB 25kA 3P 20A 415VAC C CURVE

S803CC20

### FEATURES

- Protection against short circuit and thermal overload
- Interchangeable terminal, failsafe cage or ring lug terminal
- Laser printed data for quick identification
- Contact position indication
- Finger safety with IP20 terminals
- Pole configuration 3P



### GENERAL INFORMATION

Brand	ABB
Product Type	MCB
Series	S800C

### TECHNICAL ATTRIBUTES

Application	Commercial and Industrial
Breaking Capacity 400V AC - Icu (kA)	25
Curve Type	C Curve
Maximum Operational Voltage AC (V)	440
Maximum Operational Voltage DC (V)	375
Minimum Operational Voltage AC (V)	12
No. of Poles	3P
Power Loss (W)	3.5/Pole
Rated Conditional Short-Circuit Current - Inc (kA)	25
Rated Current (A)	20
Rated Frequency (Hz)	50/60
Rated Impulse Withstand Voltage (kV)	8
Rated Insulation Voltage (V)	500
Rated Operational Voltage AC (V)	230/400
Rated Operational Voltage DC (V)	375
Rated Short-Circuit Capacity - Icn (kA)	15
Rated Voltage AC (V)	400

**PHYSICAL ATTRIBUTES**

Housing Material	Insulation group I, RAL 7035
Mounting Type	DIN Rail

**DIMENSIONS**

Cable Cross Section - Flexible (mm <sup>2</sup> )	Top/Bottom - 70/70
Cable Cross Section - Solid/Stranded (mm <sup>2</sup> )	Top/Bottom - 50/50
Dimensions (mm)	95H x 82.5D x 81W
Pole Width (mm)	27

**PROTECTION & STANDARDS**

Degree of Protection	IP20
Pollution Degree	3
Standards and Approvals	AS/NZS 60898-1,AS/NZS 60947-2, UL 1077

**RESOURCES**

Product catalogue (Flipbook)	<a href="#">Download from here</a>
------------------------------	------------------------------------