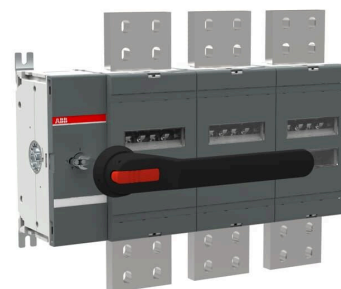


Product No: OT3200E03P

ABB OT3200E03P SWITCH-DISCONNECTOR OT3200E03P

FEATURES

- Front operated, 3 pole switch disconnecter
- Mechanism is at left end of the switch
- Base mounted
- With black handle and shaft
- Terminal bolt kit included
- Degree of protection: Handle IP65/ Front IP00



General Information

Brand	ABB
Product Type	Base Mount Load Break Switch
Suitable For	Distribution Board Installation
Type	Main Switch

Technical Attributes

Conventional Free-Air Thermal Current - I _{th} (A)	3200
Main Circuit Electrical Connection	Bolt Connection
Maximum Operational Voltage AC (V)	1000
Mode of Operation	Front operated
No. of Poles	3
Operating Mechanism	Mechanism at the End of the Switch 03 (Left Side)
Power Loss (W)	95/Pole
Rated Impulse Withstand Voltage (kV)	8
Rated Insulation Voltage (V)	1000
Rated Operational Current AC-22B 380-415V (A)	3200
Rated Operational Voltage (V)	1000
Rated Short-Time Withstand Current - I _{cw} (kA)	65
Rated Short-time Withstand Current - I _{cw} (kA/1s)	65
Terminal Type	Lug terminals

Physical Attributes

Control Element Colour	Black
Handle Colour	Black

Physical Attributes

Handle Dimensions (mm)	308.7W x 70H x 69.4D
Handle Material	Plastic
Handle Type	Pistol
Included	Handle, Shaft
Interlockable	Yes
Mounting Type	Base Mount
Shaft Dimensions (mm)	12W x 12H x 280D

Dimensions

Cable Cross Section (mm ²)	4 x 1000
Dimensions (mm)	514W x 410H x 146D
Handle Length (mm)	274

Protection & Standards

Degree of Protection - Handle	IP65
NEMA Degree of Protection	1
Pollution Degree	3
Standards and Approvals	IEC 60947-3

Resources

Product catalogue (Flipbook)	Download from here
------------------------------	------------------------------------