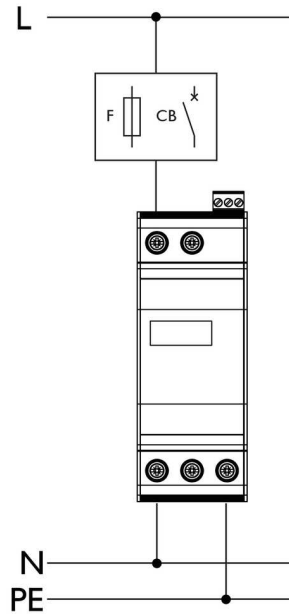


Install Manual

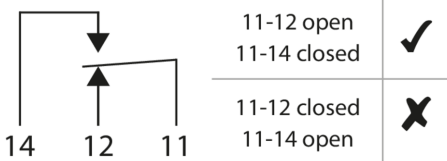
SD1-150-275-N



Installation



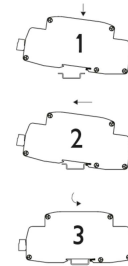
Alarm



Terminal Installation

| | | |
|-----------------------|---------------------|---------------------|
| Terminal Type | | |
| min Capacity | 2.5 mm ² | 0.5 mm ² |
| max Capacity | 16 mm ² | 2.5 mm ² |
| Torque | 2 Nm | 0.6 Nm |
| Wire Stripping Length | | |

Mounting Information



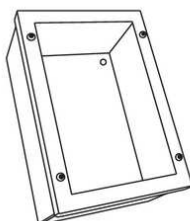
Electrical Specifications

| | | |
|-------------------------------|------------|-----------|
| Connection type | | Shunt |
| Modes of protection | | L-N, N-PE |
| Number of ports | | 1 |
| Location | | Indoor |
| Short circuit withstand level | I_{SSCR} | 50kA |
| Maximum backup fuse | | 80A |
| Recommended SCB | | SCB1-3-25 |
| Earth leakage current | I_{PE} | <10μA |

Mechanical Specifications

| | | |
|-------------------------------|--|---------------|
| Minimum operating temperature | | -40°C |
| Maximum operating temperature | | 70°C |
| Minimum operating humidity | | 5% |
| Maximum operating humidity | | 95% |
| Mounting method | | TS35 DIN Rail |
| Environmental rating | | IP20 |

Optional Mounting Kit -M



Wire entry holes should be cut by the installer on site to keep the wiring to the SD1 unit as short and straight as possible. Cable glands or grommets should be used to suit the environment and diameter of the wires utilised. Enclosure dimensions are shown in the product datasheet.