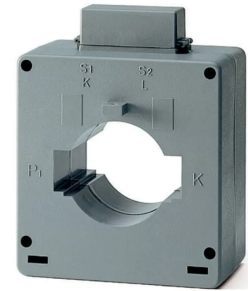


## Product No: CT6/250

### ABB CT6/250 SOLID-CORE CURRENT TRANSFORMER 250/5 RATIO, CLASS 0.5 5VA CT6



#### General Information

Brand	ABB
Product Type	Solid-Core

#### Technical Attributes

Accuracy	$\pm 0.5\%$
CT Ratio	250/5
Current Limit Function	Full Scale 5
Power Loss (W)	16
Rated Frequency (Hz)	50 / 60
Rated Primary Current - $I_{pn}$ (A)	250
Rated Secondary Current - $I_{sn}$ (A)	5

#### Physical Attributes

Cable Use	Cable and Horizontal bar
Mounting Type	Through primary
Operational Temperature Range (°C)	-5 to +50

#### Dimensions

Busbar Cross Section (mm <sup>2</sup> )	60 X 20
Cable Cross Section (mm <sup>2</sup> )	50

#### Protection & Standards

Degree of Protection

IP30

---

## Resources

Product catalogue (Flipbook)

[Download from here](#)

---