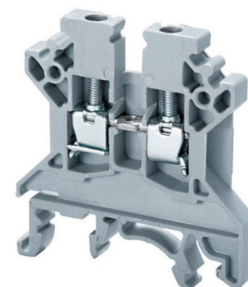


**Product No: CTS2.5UN**

**CONNECTWELL 2.5MM SCREW CLAMP 'GREY' TERMINAL BLOCK  
CTS2.5UN**



**General Information**

Brand	CONNECTWELL
Product Type	Screw Clamp

**Technical Attributes**

Conductor Cross Section (mm <sup>2</sup> )	2.5
Rated Current (A)	24
Rated Voltage (V)	1000
Surge Voltage (kV)	8
Tightening Torque (Nm)	0.4
Wire Stripping Length (mm)	8

**Physical Attributes**

Cable Entry	Side
Colour	Grey
Conductor Cross Section - Stranded (mm <sup>2</sup> )	0.2 - 2.5
Housing Material	Polyamide
Mounting Type	DIN 32/DIN 35/DIN 35-15 Rail
Screw Size	M2.5

**Dimensions**

Dimensions (mm)	43L x 5W x 46.2H
Length (mm)	43

Width (mm) 5

---

#### Protection & Standards

Pollution Degree 3

---

#### Resources

Product catalogue (Flipbook) [Download from here](#)

---