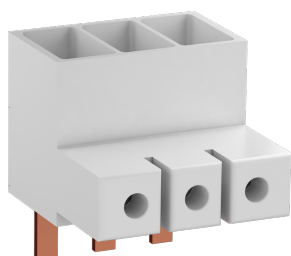


PRODUCT-DETAILS

S2-M3-50

S2-M3-50 Power Infeed Block



General Information

Extended Product Type	S2-M3-50
Product ID	1SAM401923R1003
EAN	4013614555725
Catalog Description	S2-M3-50 Power Infeed Block
Long Description	S2-M3-50 three phase feeder terminals allow the connection of cable cross sections up to 50mm ² . They are usable with MS165 manual motor starters. The rated current is 125 A (IEC) / 120 A (UL).

Ordering

Minimum Order Quantity	1 piece
Customs Tariff Number	85369010

Popular Downloads

Data Sheet, Technical Information	1SBC100214C0202
Instructions and Manuals	2CDC131081M6801
Instructions and Manuals (Part 3)	1SBC100214C0202
CAD Dimensional Drawing	2CDC001079B0201

Dimensions

Product Net Width	54 mm
Product Net Height	65 mm
Product Net Depth / Length	59.3 mm
Product Net Weight	0.172 kg

Technical

Terminal Type	Screw Terminals
Rated Operational Voltage	690 V AC 250 V DC
Rated Operational Current (I _e)	125 A
Number of Poles	3
Degree of Protection	IP20
Connecting Capacity Main Circuit	Flexible 1x 10 ... 50 mm ² Rigid 1x 10 ... 50 mm ²
Tightening Torque	Main Circuit 6 N·m
Wire Stripping Length	Main Circuit 16 mm
Standards	IEC/EN 60947-1 IEC/EN 60947-4-1 UL 60947-1 UL 60947-4-1
Product Name	Power Infeed Block
Suitable For	MS165 MO165
Suitable for Product Class	Manual Motor Starters
Accessory Group	Electrical
Accessory Type	3-Phase Power Infeed Block
Remarks	UL/CSA Type E/F and IEC

Technical UL/CSA

Maximum Operating Voltage UL/CSA	Main Circuit 600 V AC
Connecting Capacity Main Circuit UL/CSA	Flexible 1x 8-0 AWG Stranded 1x 8-0 AWG
Tightening Torque UL/CSA	Main Circuit 54 in·lb

Environmental

Ambient Air Temperature	Operation -25 ... +60 °C Storage -50 ... +85 °C
RoHS Status	Following EU Directive 2011/65/EU and Amendment 2015/863 July 22, 2019

Certificates and Declarations

Declaration of Conformity - CE	1SAD101100-3411
Declaration of Conformity - UKCA	1SAD201100-3411
UL Certificate	E121190-20000619

Container Information

Package Level 1 Width	80 mm
Package Level 1 Depth / Length	59 mm
Package Level 1 Height	64 mm
Package Level 1 Gross Weight	0.19 kg
Package Level 1 EAN	4013614555725
Package Level 1 Units	box 1 piece

Classifications

Object Classification Code	X
ETIM 5	EC000275 - Rail terminal bar
ETIM 6	EC000275 - Rail terminal bar
ETIM 7	EC000275 - Rail terminal bar
ETIM 8	EC000275 - Rail terminal bar
eClass	V11.0 : 27400603
UNSPSC	39121410
IDEA Granular Category Code (IGCC)	4561 >> Power Blocks & Distribution Blocks

Categories

Low Voltage Products and Systems → Control Products → Manual Motor Starters → Manual Motor Starters Accessories

