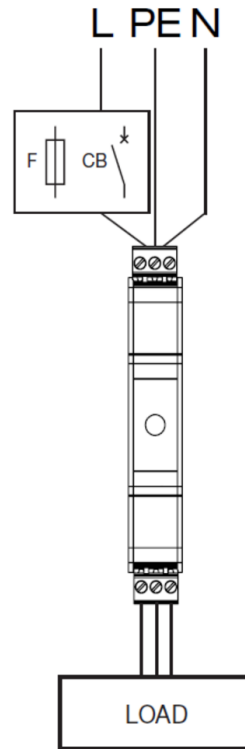


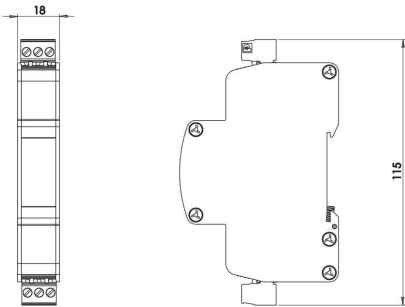
# SFD1-6-10-275



## Installation



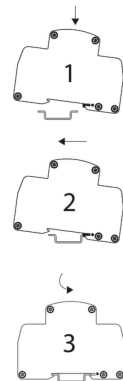
## Dimensions



## Terminals

Terminal Type	
min Capacity	0.5 mm <sup>2</sup>
max Capacity	2.5 mm <sup>2</sup>
Torque	0.6 Nm
Wire Stripping Length	

## Mounting



## Specifications

### Electrical Specifications

Connection type		Series
Modes of protection		L-N, L-PE, N-PE
Number of ports		2
Number of phases		1
Location		Indoor
Nominal voltage	U <sub>o</sub>	230VAC
Maximum backup fuse		6A

### Mechanical Specifications

Minimum operating temperature		-40°C
Maximum operating temperature		70°C
Minimum operating humidity		5%
Maximum operating humidity		95%
Mounting method		TS35 DIN Rail
Environmental rating		IP20