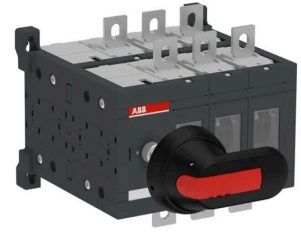


Product No: OT200E03DP

ABB OT200E03DP SWITCH-DISCONNECTOR OT200E03DP

FEATURES

- Versatile installation, adjustable shaft accommodates a range of installation depths
- Secure operation, handle is padlockable to ensure security against accidental or unauthorized use
- Rugged design for any environment with an IP65 protected handle
- Convenient front operation



General Information

Brand	ABB
Product Type	Base Mount
Suitable For	Distribution Board Installation
Type	Main Switch

Technical Attributes

Conventional Thermal Current - I _{the} (A)	200 (Fully Enclosed)
Main Circuit Electrical Connection	Bolt Connection
Maximum Operational Voltage AC (V)	1000
No. of Poles	6
Rated Conditional Short-Circuit Current - I _{nc} (kA)	100 (315 A fuse, 500 V), 80 (355 A fuse, 690 V), 100 (250 A fuse, 690 V)
Rated Impulse Withstand Voltage (kV)	12
Rated Operational Current AC-21A 415V (A)	200
Rated Operational Current AC-22A 380-415V (A)	200
Rated Operational Current AC-23A 380-415V (A)	200
Rated Operational Power AC-23A 380-415V (kW)	110
Rated Operational Voltage (V)	1000
Rated Short-Time Withstand Current - I _{cw} (kA)	8
Rated Uninterrupted Current - I _u (A)	200
Tightening Torque (Nm)	acc. IEC 60947-1 15 ... 22

Physical Attributes

Control Element Colour	Black
------------------------	-------

Physical Attributes

Interlockable	Yes
Mounting Type	Base Mount

Dimensions

Dimensions (mm)	170W x 150H x 159.5D
Weight (kg)	2.6 (Net)

Protection & Standards

Degree of Protection	IP00 (Front)
NEMA Degree of Protection	1
Pollution Degree	3
Standards and Approvals	IEC 60947-3