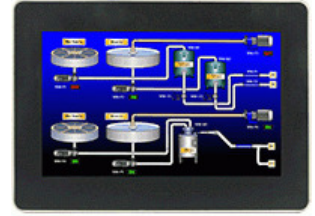


Product No: G09C1000

RED LION GRAPHITE 9" MODULAR HMI, DUAL ETHERNET, INDOOR G09C1000

FEATURES

- Indoor Model
- Built-in connectors for IoT systems
- Store & Forward buffering for Cloud connectors
- Multiple USB ports
- Touchscreen
- Ethernet port



General Information

Brand	RED LION
Product Type	Touch Screen

Technical Attributes

Communication	Ethernet 10/100Base-T(X), RS-232, RS-422/485
Display Screen Type	Touch LCD WVGA, 16 M
No. of Ethernet Ports	2
No. of Serial Ports	3
Rated Supply Voltage DC (V)	10 - 30

Dimensions

Dimensions (mm)	164.4H x 255.6W x 52.4D
Display Screen Size (in)	9

Protection & Standards

Standards and Approvals	CE, UL/CuI, ATEX, IECEx
-------------------------	-------------------------

DIMENSIONS

