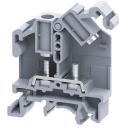


# STH4



6 sq. mm Stud Type Terminal Block - with captive nuts.

These Terminal Blocks are preferred for applications where the connections are subjected to severe vibrations. The wire is crimped to ring /fork type Lug (Ferrule) and is screwed on to flat current bar on the Terminal Block. The fastening nut always remains captive in the hinged plastic carrier. The Hinged Carrier should be lifted to insert the lugs and then snapped back into position. The nut can then be fastened to complete the connection. By the virtue of the hinged design the Terminal Blocks apart from shrouding the live parts, providing IP20 protection, saves considerable time in wiring.

### TECHNICAL DATA

Rated Voltage	1000 V
Rated Current	41 A
Tightening Torque	1.2 Nm
Housing Material	Polymide
Product Function	Feed Through
Wire Entry Orientation	Side Entry
Mounting Possibility	DIN 32/DIN 35/DIN 35-15 Rail
Stud Size	M4
Operated by	Screwdriver
Rated Surge Voltage	8 KV
Pollution Degree	3

### CONNECTION DATA

Conductor Cross Section Stranded min.	1.5 mm <sup>2</sup>
Conductor Cross Section Stranded max.	6 mm <sup>2</sup>
Conductor Cross Section AWG/Kcmil min	22 AWG
Conductor Cross Section AWG/Kcmil max	8 AWG
2 Conductors with same Cross Section Stranded min	1.5 mm <sup>2</sup>
2 Conductor with same Cross Section Stranded max	6 mm <sup>2</sup>
Conductor Cross Section Solid min	1.5 mm <sup>2</sup>
Conductor Cross Section Solid max	6 mm <sup>2</sup>

### DIMENSIONS

Height with DIN 32 rail	56.4 mm
Height with DIN 35 x 15 mm rail	59 mm
Height with DIN 35 x 7.5 mm rail	52.2 mm
Length	46 mm
Width (Thickness)	11 mm

### ORDERING INFORMATION

CAT. NO.	DESCRIPTION	STD. PACK
STH4	6 Sq.mm Hinge Type Terminal Block in Grey Colour	50
STH4R	6 Sq.mm Hinge Type Terminal Block in Red Colour	50
STH4Y	6 Sq.mm Hinge Type Terminal Block in Yellow Colour	50
STH4BU	6 Sq.mm Hinge Type Terminal Block in Blue Colour	50

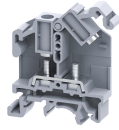
### ORDERING INFORMATION

CAT. NO.	DESCRIPTION	STD. PACK
STH4GN	6 Sq.mm Hinge Type Terminal Block in Green Colour	50
STH4BK	6 Sq.mm Hinge Type Terminal Block in Black Colour	50

### ACCESSORIES

IMAGES	CAT. NO.	DESCRIPTION	STD. PACK
	CA501-1M	Din 32 Rail unslotted 1 meter	50
	CA501-1M-S	Din 32 Rail slotted 1 meter	50
	CA501-2M	Din 32 Rail unslotted 2 meter	50
	CA501-2M-S	Din 32 Rail slotted 2 meter	50
	CA701-1M	Din 35 Rail unslotted 1 meter	50
	CA701-2M	Din 35 Rail unslotted 2 meter	50
	CA701-2M-S	Din 35 Rail slotted 2 meter	50
	CA701-1M-S	Din 35 Rail slotted 1 meter	50
	CA701-15-1M	Din 35 Rail 15 deep unslotted 1 meter	50
	CA701-15-1M-S	Din 35 Rail 15 deep slotted 1 meter	50
	CA701-15-2M	Din 35 Rail 15 deep unslotted 2 meter	50
	CA701-15-2M-S	Din 35 Rail 15 deep slotted 2 meter	50
	CA702	End Clamp in Polyamide 66 suitable for Din 32 / Din 35 / Din 35-15 Rails	50
	CA802	End Clamp in Polyamide suitable for Din 35 / Din 35-15 Rails	50
	EPSTH4	End Plate in Grey colour suitable for STH4 Terminal Block	50
	CA514/13-2	Insulated Removable Shorting Link available in 2 Pole	100
	CA514/13-3	Insulated Removable Shorting Link available in 3 Pole	50
	CA514/13-4	Insulated Removable Shorting Link available in 4 Pole	50
	QJ11/2	2 Pole shorting Plug for STH4DT Terminal Block	25
	QJ11/3	3 Pole shorting Plug for STH4DT Terminal Block	25
	QJ11/4	4 Pole shorting Plug for STH4DT Terminal Block	25

STH4



**connectwell**  
THE RIGHT CONNECTION

**ACCESSORIES**

IMAGES	CAT. NO.	DESCRIPTION	STD. PACK
	CA514/14-2	Insulated Ring Type Shorting Link for 2 way Shorting	100
	CA514/14-3	Insulated Ring Type Shorting Link for 3 way Shorting	50
	CA514/14-4	Insulated Ring Type Shorting Link for 4 way Shorting	50
	CA514/14-10	Insulated Ring Type Shorting Link for 10 way Shorting	10
	CA512/13-2	Removable Shorting link available in 2 Pole	100
	CA512/13-3	Removable Shorting link available in 3 Pole	50
	CA512/13-4	Removable Shorting link available in 4 Pole	50
	CA512/14-2	Ring Type Shorting Link for 2 way Shorting	100
	CA512/14-3	Ring Type Shorting Link for 3 way Shorting	50
	CA512/14-4	Ring Type Shorting Link for 4 way Shorting	50
	CA509/K10	Marking Tag Blank suitable for CTS10U / CGT10U / CGT10N / CHV10U / CTS10USC / STH4 / STH4DT / STH4DTSH / CSC10T Terminal Blocks	100
	SCS1/5.5	Electricians Screwdriver for slotted screws	10
	MC10	MARKER CARD 10MM PITCH WITH 42 TAGS	10

**APPROVALS**



**NOTES**

The Rated current is with the use of copper (Cu) conductor/Wire

**RATINGS AS PER STANDARDS**

STANDARDS	UL 1059	IEC/EN60947-7-1	CSA C.22.2 No:158
Approvals	UL	CE	CSA
Conductor Cross Section Stranded min.	22 AWG	1.5 mm <sup>2</sup>	22 AWG
Conductor Cross Section Stranded max.	8 AWG	6 mm <sup>2</sup>	8 AWG
Rated Voltage	600 V	1000 V	600 V
Rated Current	50 A	41 A	50 A
Tightening Torque	14 lb-in	1.2 Nm	14 lb-in