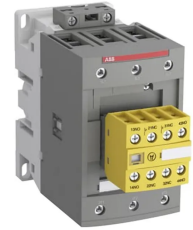


Product No: AFS65302213

ABB AFS65302213 SAFETY CONTACTOR 3P 105A (AC-1), 30KW 415VAC CONTROL 100-250V AC/DC



General Information

Brand	ABB
-------	-----

Technical Attributes

Auxiliary Contacts	2NO/2NC
Contacts	3NO (Main Contacts)
Mode of Operation	AC/DC
No. of Poles	3P
Rated Control Circuit Voltage AC/DC (V)	100 - 250
Rated Frequency (Hz)	50/60
Rated Impulse Withstand Voltage (kV)	6
Rated Insulation Voltage (V)	690
Rated Operational Current AC-1 690V (A)	105
Rated Operational Current AC-3 415V (A)	65
Rated Operational Power AC-3 415V (kW)	30
Rated Operational Voltage AC (V)	690
Terminal Type	Screw

Physical Attributes

Mounting Type	DIN Rail/Panel
---------------	----------------

Dimensions

Dimensions (mm)	125.5H x 144D x 55W
-----------------	---------------------

Protection & Standards

Degree of Protection

IP10 (Main Terminals), IP20 (Coil Terminals), IP40 (Aux. Terminals)

Resources

Product catalogue (Flipbook)

[Download from here](#)
