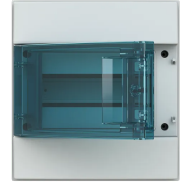


Product No: M65W08T

ABB MISTRAL LOADCENTRE 8 MODULES 1 ROW SURFACE MOUNT IP65 M65W08T

FEATURES

- Door opens up to 180° allowing full access to the interior of the unit
- The symmetrical design allows opening of the reversible door either from the left or from the right
- Screw covers are hooked to the front panel
- The external adjustments of the front cover assure a perfect horizontal levelling



General Information

Brand	ABB
Product Type	Polycarbonate Load Centre

Technical Attributes

Configuration	Assembled With DIN Rail
---------------	-------------------------

Physical Attributes

Colour	Light Grey
Door Type	Transparent Door (Petrol Blue)
Housing Material	Polycarbonate
Mounting Type	Surface Mount
No. of Rows	1
Operational Temperature Range (°C)	-10 to 60

Dimensions

Dimensions (mm)	232W x 250H x 155D
No. of Modules	8

Protection & Standards

Degree of Protection	IP65
----------------------	------