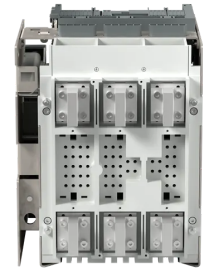


## Product No: ISDA072196R1

### ABB E1.2N 1250 EKIP TOUCH L SIG 3P WMP ISDA072196R1



#### General Information

Brand	ABB
EAN	8015644760465
Product Type	Accessory
Suitable For	E1.2
Version	Withdrawable

#### Technical Attributes

Breaking Capacity 400V AC - I <sub>cu</sub> (kA)	66
Current Type	AC
Design of Control Element	Push Button
Earth Fault Protection	Yes
Indication	Switched-off Indicator
Main Circuit Electrical Connection	Connection at Separate Chassis Part
Main Current Circuit Connection Position	Connection at Separate Chassis Part
No. of Auxiliary Change-over Contacts	4
No. of Poles	3
Overload Release Current Setting (A)	500
Power Loss (W)	244
Rated Current (A)	1250
Rated Impulse Withstand Voltage (kV)	12
Rated Instantaneous Short-Circuit Current - I <sub>i</sub> (A)	1875
Rated Insulation Voltage AC (V)	1000

Rated Short-time Withstand Current - I <sub>cw</sub> (kA/1s)	50
Rated Short-time Withstand Current - I <sub>cw</sub> (kA/3s)	30
Rated Uninterrupted Current - I <sub>u</sub> (A)	1250
Rated Voltage (V)	690
Rated Voltage AC (V)	690
Trip Unit	EKIP Touch LSIG

## Dimensions

Dimensions (mm)	278W x 363.5H x 271D
-----------------	----------------------

## Protection & Standards

Degree of Protection	IP30
----------------------	------

## Resources

Product catalogue (Flipbook)	<a href="#">Download from here</a>
------------------------------	------------------------------------