

## Product No: TIS63M80

**IPD FUSE LINK MOTOR RATED 80A 690VA OFF-SET TAG 73mm  
FIXING 80kA A3, 400310 TIS63M80**

### FEATURES

- Fault levels up to 80kA (AC)
- Low power dissipation values
- Superior withstand to motor starting surges



### General Information

Brand	IPD
Pack Quantity	10
Product Type	Bolt-In

### Technical Attributes

Breaking Capacity AC (kA)	80
Breaking Capacity DC (kA)	40
Fuse Shape	Offset slotted bolted tags
Fuse Type	BS88/A3
Insulated Metal Gripping Lugs	No
Rated Current (A)	80
Rated Voltage AC (V)	690
Rated Voltage DC (V)	460
Suitable Fuse Holder	RS63/RSM
Utilisation Category	gM
Voltage Type	AC/DC

### Physical Attributes

Maximum Ambient Temperature (°C)	40
----------------------------------	----

### Dimensions

Body Diameter (mm)	26.2
--------------------	------

Fixing Centres (mm)

73

**Protection & Standards**

Standards

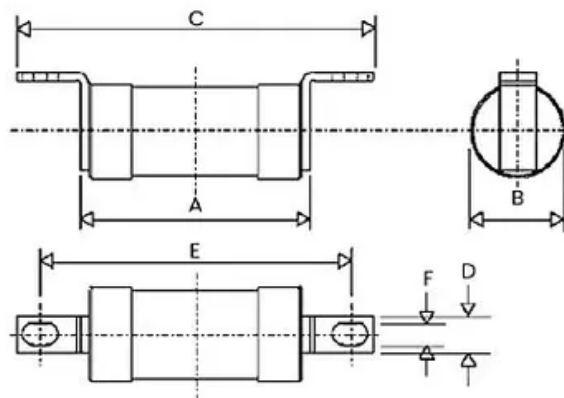
BS 88-2, AS 60269, IEC 269-2-1, ASTA20

**Resources**

Product catalogue (Flipbook)

[Download from here](#)

**DIMENSIONS**



Rated Current (A)	A	B	C	D	E	F
35 - 63	56.4	23.8	85.8	8.7	73	5.2
63M80, 63M100	58	26.2	90.5	12.7	73	5.2

All Dimensions are in "mm"