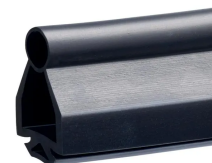


Product No: 101172154

SCHMERSAL SE-P40-2500 SAFETY-RELATED TACTILE SENSOR 101172154

FEATURES

- Material: EPDM 65 Shore A
- Dimensions: 5000 x 25 x 40 mm (Length x Width x Height)
- IP Rating: IP67 for dust and water resistance
- Temperature Range: Operable from -50 °C to +170 °C
- Complies with Additional Standards: EN ISO 13850



Note: This type termination (IDC) method enables simple connection of flexible conductors without the need for the use of conductor ferrules

General Information

Brand	SCHMERSAL
Cable Note	All indications including the conductor ferrules.
EAN	4030660000000
eCl@ss Number, Version 11.0	27-27-27-04
eCl@ss Number, Version 9.0	27-06-03-11
ETIM 6.0	EC002549
ETIM 7.0	EC000030
Housing Construction Form	Block
Product Type	Accessory
Series	SE-P40
Working Principle	Inductive

Technical Attributes

Contact Material	Silver
Maximum Actuating Speed (m/s)	1
Maximum Cable Cross Section (mm ²)	2.5
Maximum Fuse Rating	6 A (slow blow)
Minimum Cable Cross Section (mm ²)	1 x 0.5

No. of Auxiliary Contacts	1
No. of Safety Contacts	1
Rated Impulse Withstand Voltage (kV)	6
Rated Insulation Voltage (V)	500
Rated Short-circuit Current (A)	100
Switching Element	NO contact, NC contact
Switching Principle	Slow action with overlapping contacts
Terminal Type	Screw terminals M20 x 1.5
Utilisation Category	DC-13 AC-15

Physical Attributes

Actuator Type	Offset roller lever K370
Enclosure Material	Aluminium
Gross Weight (g)	70
Maximum Ambient Temperature (°C)	80
Maximum Temperature (°C)	170
Minimum Ambient Temperature (°C)	-30
Minimum Temperature (°C)	-50
Net Weight (g)	60

Dimensions

Sensor Height (mm)	121.5
Sensor Length (mm)	30

Protection & Standards

Degree of Protection	IP67
Standards	EN 81-20 / EN 81-50

Resources

Product catalogue (Flipbook)	Download from here
------------------------------	------------------------------------